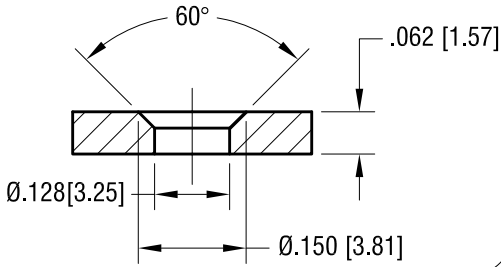


THIS DOCUMENT IS THE PROPERTY OF KEYSTONE ELECTRONICS CORP. AND SHALL NOT BE REPRODUCED, DISTRIBUTED OR USED AS A BASIS FOR MANUFACTURE WITHOUT PRIOR WRITTEN PERMISSION FROM KEYSTONE ELECTRONICS CORP.

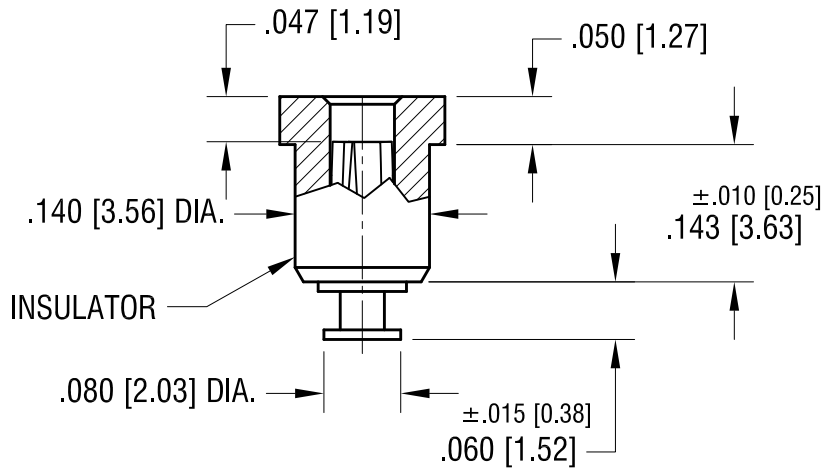
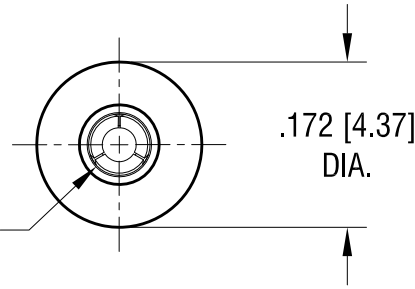
MTG HOLE DETAIL



ACTUAL SIZE



SPRING CONTACT TO ACCEPT .040 [1.02] PIN DIA.



PART NO.	COLOR
11003	WHITE
11003-R	RED
11003-B	BLACK

NOTES:

1. TERMINAL JACK : MAT'L - BERYLLIUM COPPER (QQ-C-533)
FINISH- GOLD PLATE
2. BUSHING: MAT'L - PTFE
(COLOR IN THE CHART)

KEYSTONE ELECTRONICS CORP.			
www.keyelco.com • NEW HYDE PARK NY 11040 • Tel (516)328-7500			
PART NAME PTFE INSULATED TEST JACK			
MATERIAL AS NOTED			
FINISH AS NOTED		DRN BY NT	DATE 11.21.07
		APP'D RH	SCALE 5X
TOLERANCES DECIMAL ANGULAR	INCH [MM] ± .005 [± 0.13] ± 1°	CODE C	DWG NO. 11003-
UNLESS OTHERWISE SPECIFIED			

DATE	DESCRIPTION	REV.
10.19.10	CHANGE AS PER ECN 10-072	B
7.10.07	CHANGE AS PER ECN 08-177	A