

# Rocker Switch

## Single and Double Pole RR Series



### Features

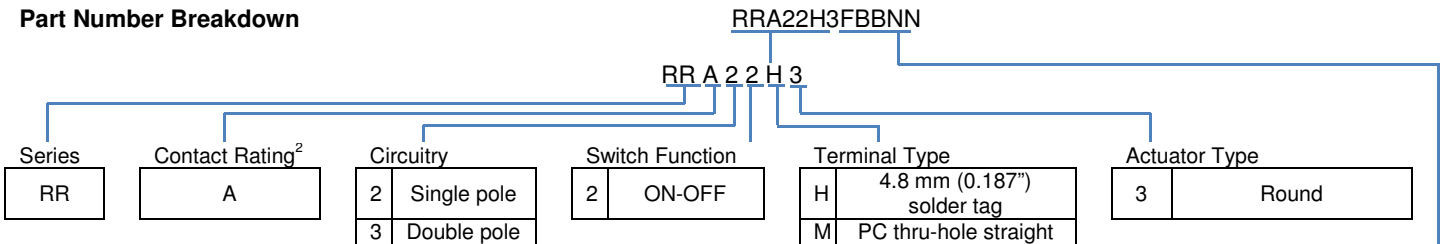
- Lighted and non-lighted versions
- Industry standard cutout
- RoHS Compliant
- Minimum 100,000 operations mechanical life

### Standard Parts<sup>1</sup>

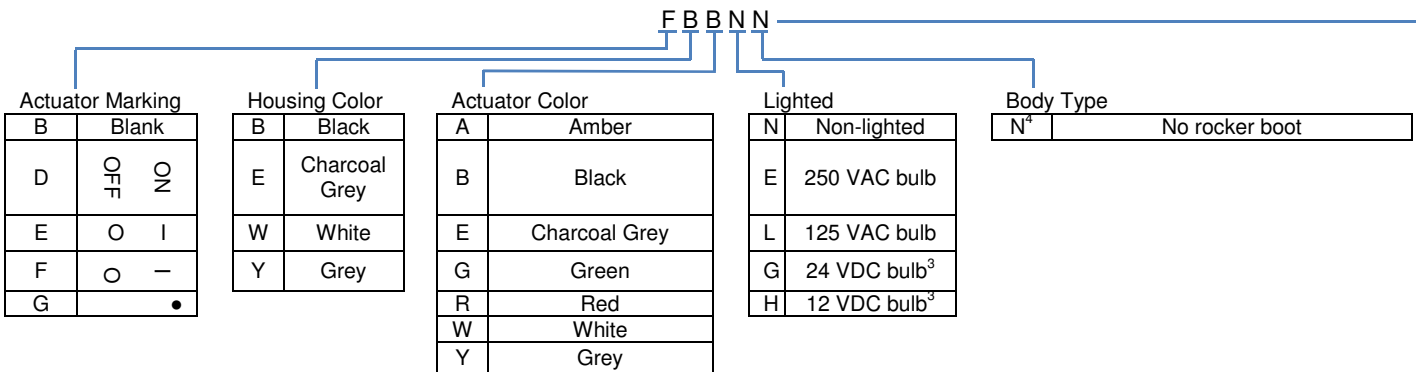
| North America |              | North America and Europe |              | Europe       |              |
|---------------|--------------|--------------------------|--------------|--------------|--------------|
| RRA22H3BBALN  | RRA22H3BBRLN | RRA22H3BBBNN             | RRA32H3FBBNN | RRA22H3FBBNN | RRA32H3BBRLN |
| RRA22H3BBGLN  | RRA22H3FBRNN |                          |              | RRA32H3BBBNN | RRA32H3BBGEN |
| RRA22H3BBRHN  | RRA32H3BBRLN |                          |              | RRA32H3BBREN | RRA32H3BBGLN |

<sup>1</sup>The part number configuration matrix below provides details to the part numbers above. For configurable part numbers that are not listed above, not listed in your region, or for custom part numbers, contact the factory or your distributor.

### Part Number Breakdown



<sup>2</sup>See Electrical Specifications section




<sup>3</sup>Switches have no agency DC ratings

<sup>4</sup>A splash-proof boot can be ordered separately as part number 00150751

PLEASE NOTE

**CHERRY**  
will become  
ZF in 2017.



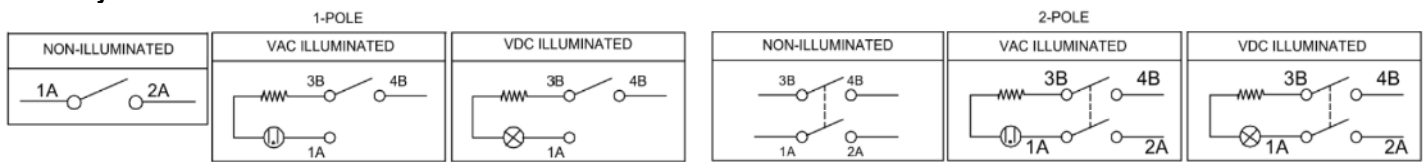
## Electrical Specifications

|  |                         |                            |                    |
|--|-------------------------|----------------------------|--------------------|
| Inrush Rating                                    | 24 A                    |                            |                    |
| Dielectric Strength                              | 1000 VAC for 1 minute   |                            |                    |
| Insulation Resistance                            | 100 MΩ min at 500 VDC   |                            |                    |
| Initial Contact Resistance                       | 0.020 Ω max             |                            |                    |
| <b>Electrical Ratings</b>                        |                         |                            |                    |
| Switch Function                                  | EN61058-1               | UL Gen Purpose 1054        | UL HP              |
| 2  | 10 (4) A 250 V~ T125/55 | 10 A 125 VAC / 8 A 250 VAC | ¼ HP 125 / 250 VAC |
| Electrical Life at Rated Load Minimum Operations | VDE<br>10,000           | UL<br>6,000                |                    |
| UL File No: E23301                               |                         |                            |                    |

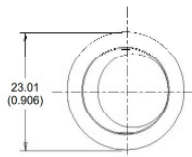
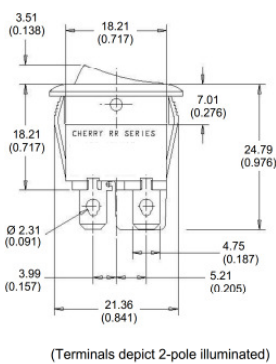
## Material and Environmental Specifications

|                             |                                     |
|-----------------------------|-------------------------------------|
| Actuator                    | Nylon 66 94V-2                      |
| Base                        | Nylon 66 94V-2                      |
| Spring                      | Steel Wire                          |
| Contacts                    | Silver Alloy                        |
| Movable Arm                 | Copper Alloy                        |
| Terminals                   | Tin-Plated Copper Alloy             |
| Operating Temperature Range | -20 °C to +65 °C (-4 °F to +149 °F) |

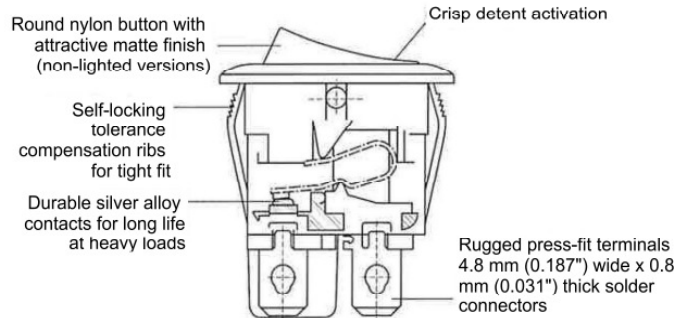
## Circuitry and Switch Functions



## Dimensions mm (inches)



NOTE: ALL TOLERANCES ±0.3 (0.012) UNLESS OTHERWISE SPECIFIED



Recommended Panel Cut-Out Dimensions  
Panel Thickness 1.0 to 2.0 (0.039 to 0.078)

