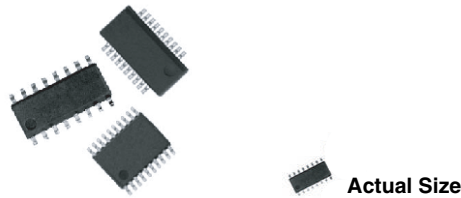




# Molded, 25 mil or 50 mil Pitch, Dual-In-Line Thin Film Resistor, Surface Mount Network

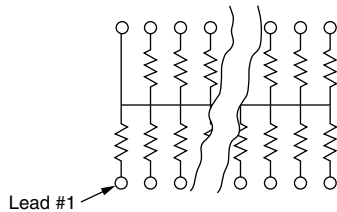


Vishay Dale Thin Film resistor networks are designed to be used in either analog or digital circuits. The use of thin film resistive elements within the network allows you to achieve an infinite number of very low noise and high stability circuits for industrial, medical and scientific instrumentation. Vishay Dale Thin Film resistor networks are packaged in molded plastic packages with sizes that are recognized throughout the world. The rugged packaging offers superior environmental protection and consistent dimensions for ease of placement with automatic SMT equipment. Vishay Dale Thin Film stocks many designs and values for off-the-shelf convenience. With Vishay Dale Thin Film you can depend on quality products delivered on time with service backing the product.

## SCHEMATICS

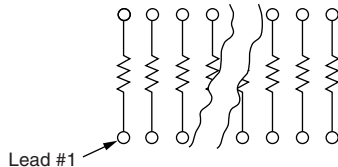
### 01 SCHEMATIC

Resistance Range:  
10 Ω to 47 kΩ

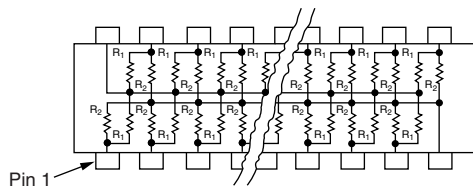


### 03 SCHEMATIC

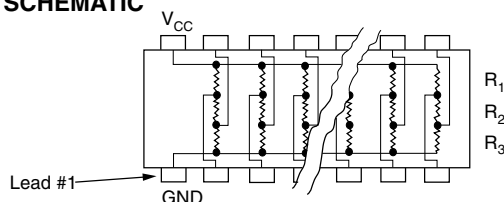
Resistance Range:  
10 Ω to 47 kΩ



### 05 SCHEMATIC



### 47 SCHEMATIC



## FEATURES

- Reduces total assembly costs
- Compatible with automatic surface mounting equipment
- UL 94 V-0 flame resistant
- Thin film tantalum nitride on silicon
- Choice of package sizes: VTSR (TSSOP) JEDEC® MO-153, VSSR (SSOP or QSOP) JEDEC MO-137, VSOR (SOIC narrow) JEDEC MS-012
- Moisture sensitivity level 1 (per IPC/JEDEC STD-20C)
- Isolated/bussed/dual terminator/differential terminator circuits
- Material categorization: for definitions of compliance please see [www.vishay.com/doc?99912](http://www.vishay.com/doc?99912)



RoHS COMPLIANT  
HALOGEN FREE

## TYPICAL PERFORMANCE

|      | ABSOLUTE | TRACKING |
|------|----------|----------|
| TCR  | 100      | NA       |
|      | ABSOLUTE | RATIO    |
| TOL. | 5, 2, 1  | NA       |

## RESISTORS WITH ONE PIN COMMON

The 01 circuit provides nominally equal resistors connected between a common pin and a discrete PC board pin.

Commonly used in the following applications:

- MOS/ROM pull-up/-down
- Open collector pull-up
- “Wired OR” pull-up
- Power driven pull-up
- TTL input pull-down
- Digital pulse squaring
- TTL unused gate pull-up
- High speed parallels pull-up

Broad selection of standard values available

## ISOLATED RESISTORS

The 03 circuit provides nominally equal resistors isolated from all others and wired directly across.

Commonly used in the following applications:

- “Wired OR” pull-up
- Power driven pull-up
- Power gate pull-up
- Line termination
- Long-line impedance balancing
- LED current limiting
- ECL output pull-down
- TTL input pull-down

Broad selection of standard values available

## DUAL-LINE TERMINATOR; PULSE SQUARING

The 05 circuit contains pairs of resistors connected between ground and a common line. The junctions of these resistor pairs are connected to the input leads. The 05 circuits are designed for dual-line termination and pulse squaring.

Standard values are:

VSSR1605:  
R<sub>1</sub> = 220 Ω, R<sub>2</sub> = 330 Ω  
R<sub>1</sub> = 330 Ω, R<sub>2</sub> = 470 Ω

VSSR2005:  
R<sub>1</sub> = 220 Ω, R<sub>2</sub> = 330 Ω  
R<sub>1</sub> = 220 Ω, R<sub>2</sub> = 1.8 kΩ  
R<sub>1</sub> = 1.5 kΩ, R<sub>2</sub> = 3.3 kΩ

## DIFFERENTIAL TERMINATOR

The 47 schematic consists of series resistor sections connected between V<sub>CC</sub> and ground. Each contains 3 resistors of 2 different resistance values.

Standard values are:

VSSR20 and VTSR20:  
R<sub>1</sub> = 270 Ω, R<sub>2</sub> = 120 Ω

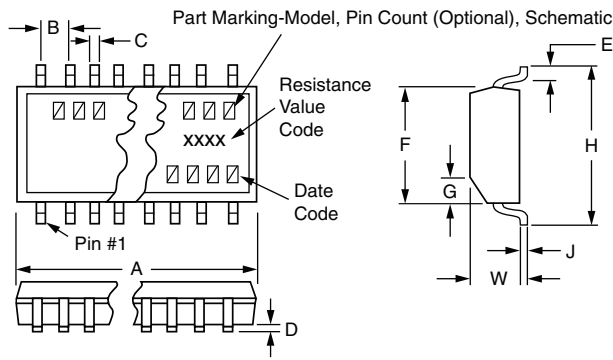
VSSR16 and VTSR16:  
R<sub>1</sub> = 330 Ω, R<sub>2</sub> = 150 Ω  
R<sub>1</sub> = 330 Ω, R<sub>2</sub> = 220 Ω



**STANDARD ELECTRICAL SPECIFICATIONS**

| TEST                           | SPECIFICATIONS   | CONDITIONS                       |
|--------------------------------|--|----------------------------------|
| Material                       | Tantalum nitride   | -                                |
| Pin / Lead Number              | 16, 20, 24   | -                                |
| Resistance Range               | 10 Ω to 47 kΩ  | Per E-24 table                   |
| TCR: Absolute                  | ± 100 ppm/°C   | -55 °C to +125 °C                |
| TCR: Tracking                  | n/a  | -                                |
| Tolerance: Absolute            | ± 5 % standard (± 2 % available)<br>± 1 % standard (check factory) | Per E-24 table<br>Per E-96 table |
| Tolerance: Ratio               | NA   | -                                |
| Power Rating: Resistor         | 100 mW max.  | At +70 °C                        |
| Power Rating: Package          | 16 = 1.0 W, 20 = 1.2 W, 24 = 1.4 W                                 | 0 °C to +70 °C                   |
| Stability: Absolute            | -  | -                                |
| Stability: Ratio               | -  | -                                |
| Voltage Coefficient            | 5 ppm/V (typical)  | -                                |
| Working Voltage                | 50 V <sub>DC</sub>   | -                                |
| Operating Temperature Range    | -55 °C to +125 °C  | -                                |
| Storage Temperature Range      | -55 °C to +150 °C  | -                                |
| Noise                          | < -35 dB   | -                                |
| Thermal EMF                    | -  | -                                |
| Shelf Life Stability: Absolute | -  | -                                |
| Shelf Life Stability: Ratio    | -  | -                                |

**DIMENSIONS AND IMPRINTING** in inches (millimeters)



| DIMENSION  | VTSR-xxxx                   | VSSR-xxxx                    | VSOR-xxxx                   |
|------------|-----------------------------|------------------------------|-----------------------------|
| A - 16 PIN | 0.206 ± 0.003 (5.23 ± 0.08) | 0.193 ± 0.004 (4.90 ± 0.010) | 0.390 ± 0.010 (9.91 ± 0.25) |
| A - 20 PIN | 0.256 ± 0.003 (6.50 ± 0.08) | 0.341 ± 0.003 (8.66 ± 0.08)  | NA                          |
| A - 24 PIN | 0.306 ± 0.003 (7.77 ± 0.08) | 0.341 ± 0.003 (8.66 ± 0.08)  | NA                          |
| B (Ref.)   | 0.0256 (0.65)               | 0.025 (0.64)                 | 0.050 (1.27)                |
| C (Ref.)   | 0.0087 (0.22)               | 0.010 (0.25)                 | 0.016 (0.41)                |
| D          | 0.004 (0.10)                | 0.006 (0.15)                 | 0.008 (0.20)                |
| E (Typ.)   | 0.024 (0.61)                | 0.025 (0.64)                 | 0.030 (0.76)                |
| F          | 0.173 ± 0.003 (4.39 ± 0.08) | 0.154 ± 0.003 (3.91 ± 0.08)  | 0.152 ± 0.003 (3.86 ± 0.08) |
| G          | 0.015 × 45° (0.38)          | 0.015 × 45° (0.38)           | 0.015 × 45° (0.38)          |
| H          | 0.252 ± 0.005 (6.40 ± 0.13) | 0.236 ± 0.008 (5.99 ± 0.20)  | 0.236 ± 0.005 (5.99 ± 0.13) |
| J (Ref.)   | 0.005 (0.13)                | 0.010 (0.25)                 | 0.008 (0.20)                |
| W          | 0.043 ± 0.005 (1.09 ± 0.13) | 0.064 ± 0.005 (1.63 ± 0.13)  | 0.064 ± 0.005 (1.63 ± 0.13) |

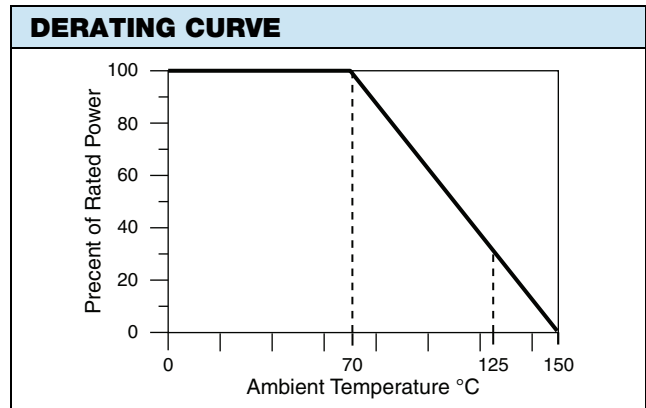
**MARKING**

| MODEL       | PIN COUNT (Optional) | SCHEMATIC | RESISTANCE  | RESISTANCE   | DATE CODE   |
|-------------|----------------------|-----------|---|--|-------------|
| <b>VXXX</b> | <b>XX</b>            | <b>XX</b> | <b>XXXX</b>   | <b>XXX</b>   | <b>XXXX</b> |
| VSOR        | 16                   | 01, 03,   | 1 % RESISTANCE  | <b>OR</b> 1 %, 2 %, 5 % RESISTANCE<br>e.g.: 103 = 10K<br>The first 2 digits are significant figures, the last digit specifies the number of zeros to follow. |             |
| VSSR        | 20                   | 05 or 47  | e.g.: 43R2  |  |             |
| VTSR        | 24                   |           | 4 digits are used to express ohmic values only less than 100 Ω. R is used to designate the decimal position |  |             |



| MECHANICAL SPECIFICATIONS      |  |
|--------------------------------|--|
| Resistive Element              | Tantalum nitride                               |
| Substrate Material             | Silicon  |
| Body                           | Molded epoxy                                   |
| Terminals                      | Copper alloy                                   |
| Plating                        | 100 % matte tin                                |
| Lead Coplanarity               | 0.0005"  |
| Marking Resistance to Solvents | Permanency testing per MIL-STD-202, method 215 |

| PACKAGING INFORMATION |       |               |       |
|-----------------------|-------|---------------|-------|
| MODEL                 | LEADS | TAPE AND REEL | TUBES |
| VTSR (TSSOP)          | 16    | 2500          | 94    |
|                       | 20    | 2500          | 74    |
|                       | 24    | 2500          | 62    |
| VSSR (QSOP)           | 16    | 2500          | 98    |
|                       | 20    | 2500          | 55    |
|                       | 24    | 2500          | 55    |
| VSOR (SOIC)           | 16    | 2500          | 48    |
|                       | 20    | 1000          | 38    |



### GLOBAL PART NUMBER INFORMATION

New Global Part Numbering: **VTSR1601103JTF**

|   |   |   |   |   |   |   |   |   |   |   |   |   |   |   |   |   |
|---|---|---|---|---|---|---|---|---|---|---|---|---|---|---|---|---|
| V | T | S | R | 1 | 6 | 0 | 1 | 1 | 0 | 3 | J | T | F |   |   |   |
| V | S | O | R | 1 | 6 | 0 | 5 | 3 | 3 | 1 | 4 | 7 | 1 | G | T | F |

| GLOBAL MODEL  | PIN COUNT                 | SCHEMATIC                          | RESISTANCE (3, 4 or 6 digits)  | TOLERANCE                           | PACKAGING  |
|---|---------------------------|------------------------------------|--|-------------------------------------|--|
| VTSR<br>VSSR<br>VSOR<br>Lead (Pb)-free (e3)<br>date code > 2705 | 16<br>20<br>24 (not VSOR) | 01 (bussed)<br>03 (isolated)       | XXX: ≥ 100R and all 1 %, 2 % and 5 %<br>First 2 digits are significant figures. Last digit specifies number of zeros to follow.<br>XXXX: < 100R 1 %<br>First 3 digits are significant figures. Last digit specifies number of zeros to follow. | F = 1.0 %<br>G = 2.0 %<br>J = 5.0 % | TAPE AND REEL<br>TF = full reel 2500<br>UF = tubed |
|   | 16 (not VTSR)<br>20       | 05 (terminator)<br>47 (terminator) | xxx xxx<br>First 2 digits are significant figures. Last digit specifies number of zeros.   | G = 2.0 %<br>J = 5.0 %              |  |

Historical Part Number example: **VSSR2001102GT/R** (for reference purposes only)

|       |           |           |            |           |           |
|-------|-----------|-----------|------------|-----------|-----------|
| VSSR  | 20        | 01        | 102        | G         | T/R       |
| MODEL | PIN COUNT | SCHEMATIC | RESISTANCE | TOLERANCE | PACKAGING |



## Disclaimer

ALL PRODUCT, PRODUCT SPECIFICATIONS AND DATA ARE SUBJECT TO CHANGE WITHOUT NOTICE TO IMPROVE RELIABILITY, FUNCTION OR DESIGN OR OTHERWISE.

Vishay Intertechnology, Inc., its affiliates, agents, and employees, and all persons acting on its or their behalf (collectively, "Vishay"), disclaim any and all liability for any errors, inaccuracies or incompleteness contained in any datasheet or in any other disclosure relating to any product.

Vishay makes no warranty, representation or guarantee regarding the suitability of the products for any particular purpose or the continuing production of any product. To the maximum extent permitted by applicable law, Vishay disclaims (i) any and all liability arising out of the application or use of any product, (ii) any and all liability, including without limitation special, consequential or incidental damages, and (iii) any and all implied warranties, including warranties of fitness for particular purpose, non-infringement and merchantability.

Statements regarding the suitability of products for certain types of applications are based on Vishay's knowledge of typical requirements that are often placed on Vishay products in generic applications. Such statements are not binding statements about the suitability of products for a particular application. It is the customer's responsibility to validate that a particular product with the properties described in the product specification is suitable for use in a particular application. Parameters provided in datasheets and / or specifications may vary in different applications and performance may vary over time. All operating parameters, including typical parameters, must be validated for each customer application by the customer's technical experts. Product specifications do not expand or otherwise modify Vishay's terms and conditions of purchase, including but not limited to the warranty expressed therein.

Hyperlinks included in this datasheet may direct users to third-party websites. These links are provided as a convenience and for informational purposes only. Inclusion of these hyperlinks does not constitute an endorsement or an approval by Vishay of any of the products, services or opinions of the corporation, organization or individual associated with the third-party website. Vishay disclaims any and all liability and bears no responsibility for the accuracy, legality or content of the third-party website or for that of subsequent links.

Vishay products are not designed for use in life-saving or life-sustaining applications or any application in which the failure of the Vishay product could result in personal injury or death unless specifically qualified in writing by Vishay. Customers using or selling Vishay products not expressly indicated for use in such applications do so at their own risk. Please contact authorized Vishay personnel to obtain written terms and conditions regarding products designed for such applications.

No license, express or implied, by estoppel or otherwise, to any intellectual property rights is granted by this document or by any conduct of Vishay. Product names and markings noted herein may be trademarks of their respective owners.