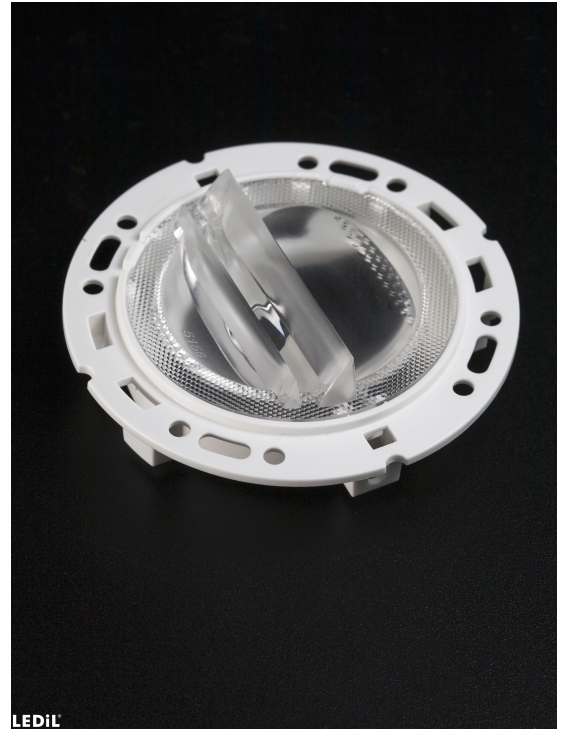


RONDA-WAS

Asymmetric beam for wall washing with holder A compatible with 3rd party connectors from TE, Bender+Wirth and IDEAL

SPECIFICATION:

Dimensions	Ø 69.9 mm
Height	21.8 mm
Fastening	socket
ROHS compliant	yes ⓘ



MATERIALS:

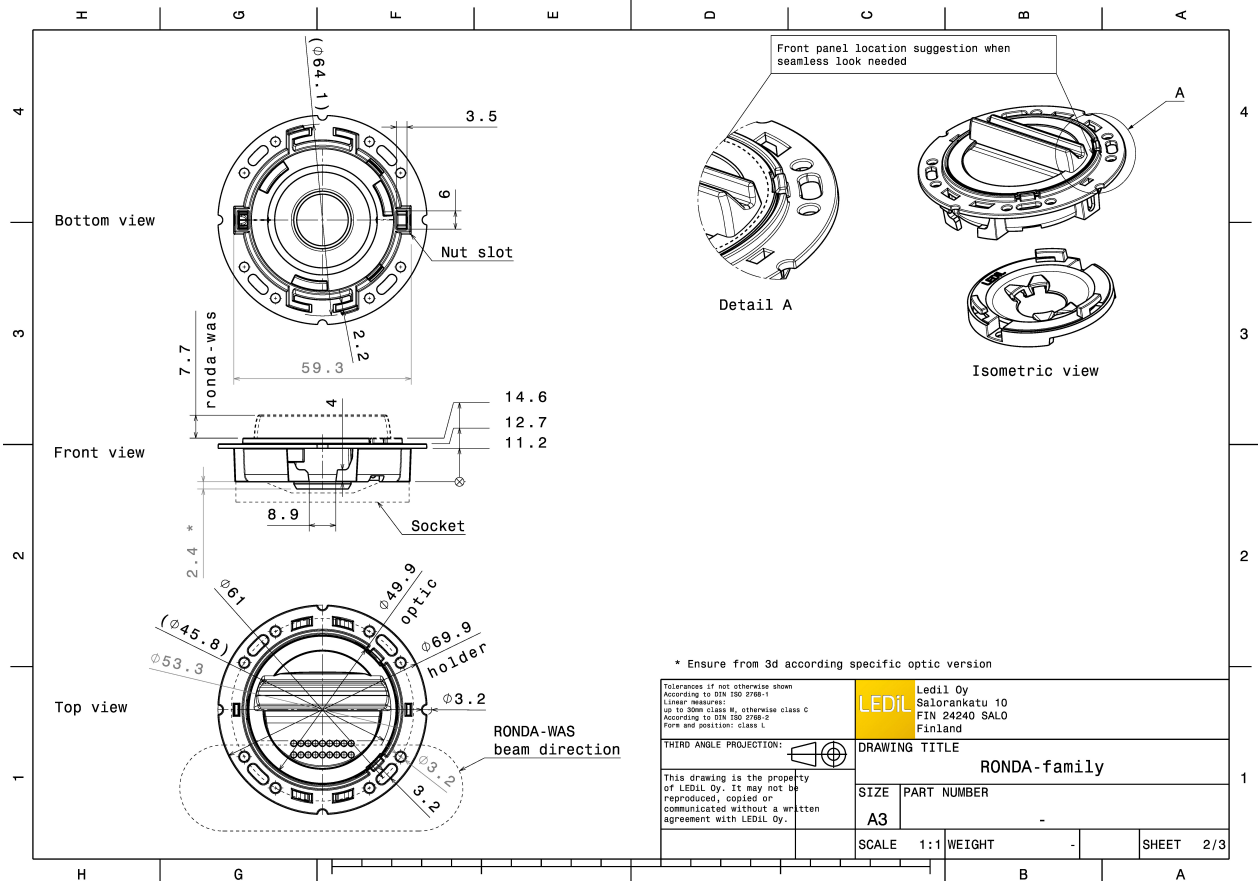
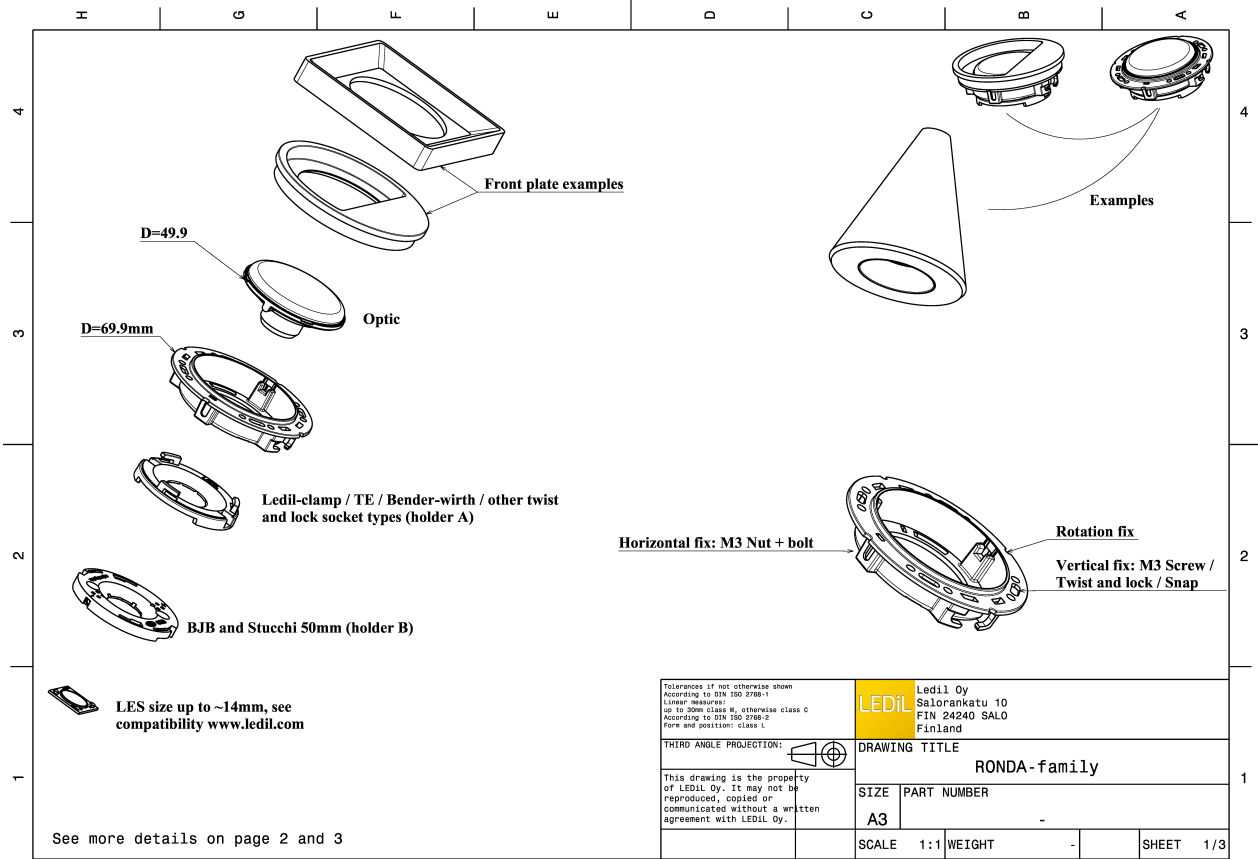
Component	Type	Material	Colour	Finish	Length (mm)
F15156_RONDA-WAS	Single lens	PMMA	clear		
F15155_RONDA-HLD-A	Holder	PC	white		

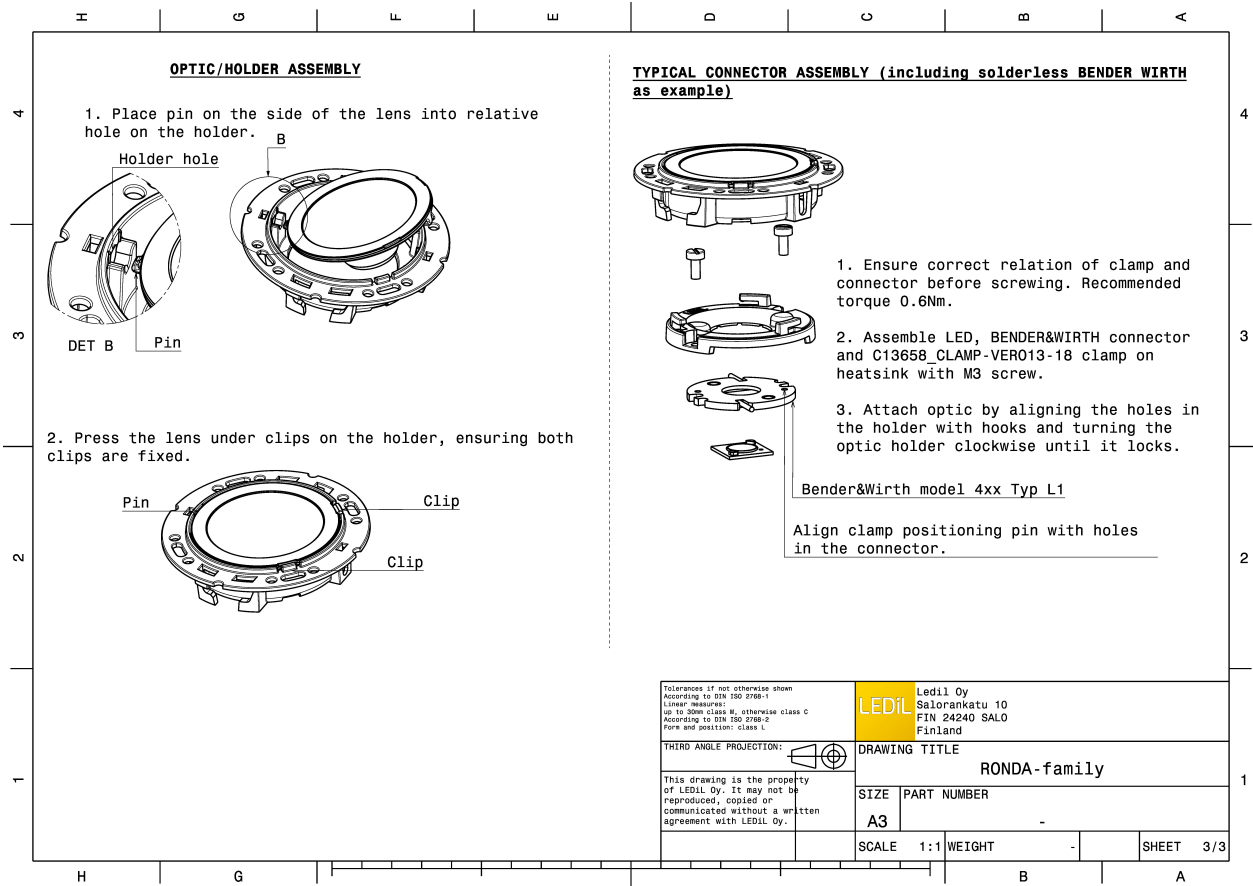
ORDERING INFORMATION:

Quantities for one set:

Single lens	1
Holder	1

Component		Qty in box	MOQ	MPQ	Box weight (kg)
F15156_RONDA-WAS	Single lens	420	120	30	7.3
» Box size: 480 x 280 x 300 mm					
F15155_RONDA-HLD-A	Holder	420	120	30	4.4
» Box size: 480 x 280 x 300 mm					





See also our general installation guide: www.ledil.com/installation_guide

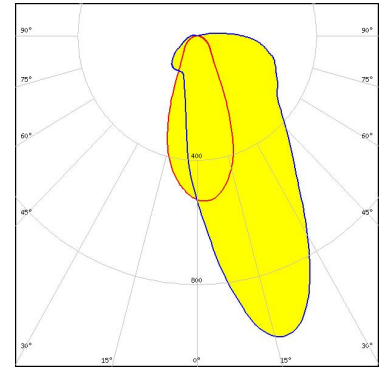
OPTICAL RESULTS (MEASURED):

bridgelux

LED V10 Gen7
 FWHM / FWTM Asymmetric
 Efficiency 88 %
 Peak intensity 1 cd/lm
 LEDs/each optic 1
 Light colour/type White

Required components:

C13658_CLAMP-VERO13-18
 Bender Wirth: 486 Typ L1



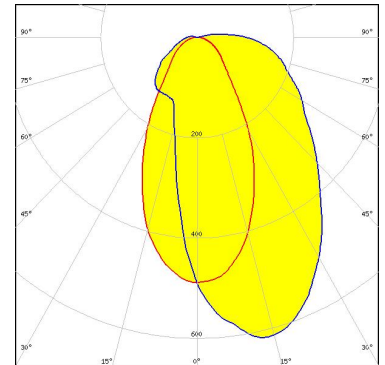
Light distribution files

bridgelux

LED V13 Gen7
 FWHM / FWTM Asymmetric
 Efficiency 84 %
 Peak intensity 0.6 cd/lm
 LEDs/each optic 1
 Light colour/type White

Required components:

TE Connectivity: 2213254-2 + OPTIC CLIP Z50 TYPE1 2213194-1



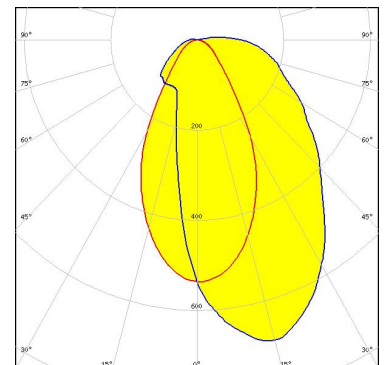
Light distribution files

bridgelux

LED Vero SE 13
 FWHM / FWTM Asymmetric
 Efficiency 89 %
 Peak intensity 0.7 cd/lm
 LEDs/each optic 1
 Light colour/type White

Required components:

C16402_CLAMP-VEROSE-13-18

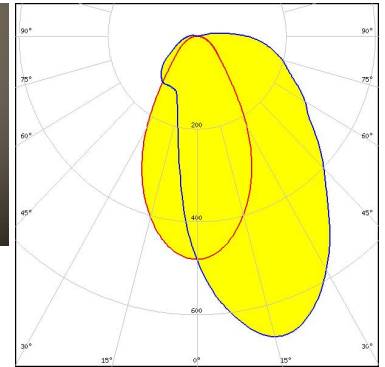


Light distribution files

OPTICAL RESULTS (MEASURED):



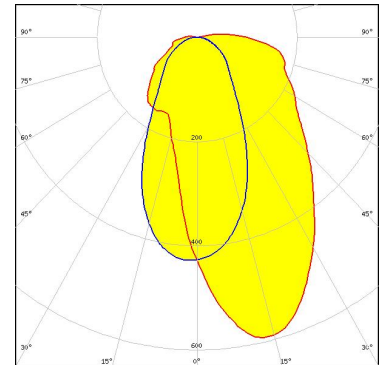
LED VERO13
FWHM / FWTM Asymmetric
Efficiency 89 %
Peak intensity 0.7 cd/lm
LEDs/each optic 1
Light colour/type White
Required components:
 C13658_CLAMP-VERO13-18



Light distribution files

CITIZEN

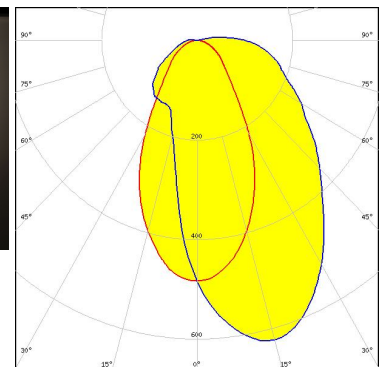
LED CLL03x/CLU03x
FWHM / FWTM Asymmetric
Efficiency 84 %
Peak intensity 0.6 cd/lm
LEDs/each optic 1
Light colour/type White
Required components:
 IDEAL: 50-2103CT + 50-2100AN



Light distribution files

CITIZEN

LED CLL03x/CLU03x
FWHM / FWTM Asymmetric
Efficiency 87 %
Peak intensity 0.6 cd/lm
LEDs/each optic 1
Light colour/type White
Required components:
 C16791_CLAMP-Z45-A
 TE Connectivity: 2325807-3

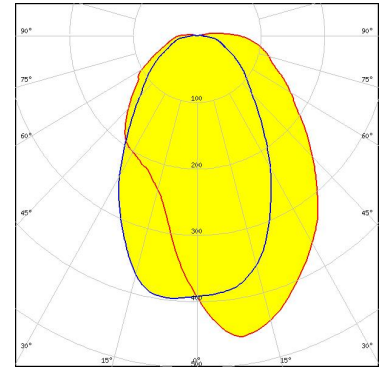


Light distribution files

OPTICAL RESULTS (MEASURED):

CITIZEN

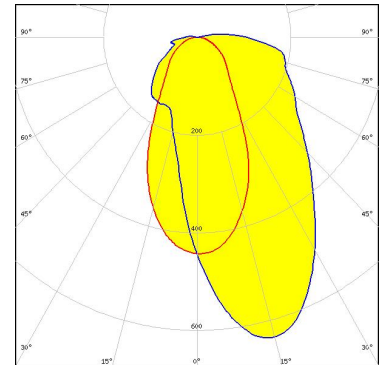
LED CLL04x/CLU04x
 FWHM / FWTM Asymmetric
 Efficiency 84 %
 Peak intensity 0.5 cd/lm
 LEDs/each optic 1
 Light colour/type White
 Required components:
 IDEAL: 50-2204-CT + 50-2100AN



Light distribution files

CITIZEN

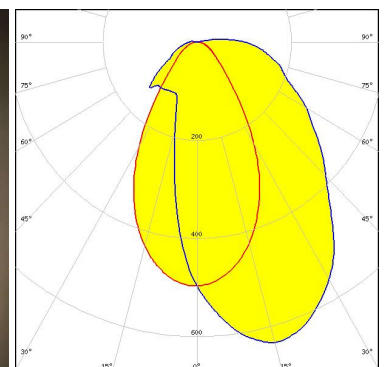
LED CLU730/731/733
 FWHM / FWTM Asymmetric
 Efficiency 85 %
 Peak intensity 0.6 cd/lm
 LEDs/each optic 1
 Light colour/type White
 Required components:
 IDEAL: 50-2204-CT + 50-2100AN



Light distribution files



LED CMA1840
 FWHM / FWTM Asymmetric
 Efficiency 89 %
 Peak intensity 0.6 cd/lm
 LEDs/each optic 1
 Light colour/type White
 Required components:
 C14123_CLAMP-CXA15-18

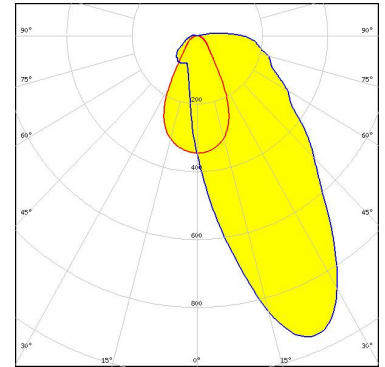


Light distribution files

OPTICAL RESULTS (MEASURED):



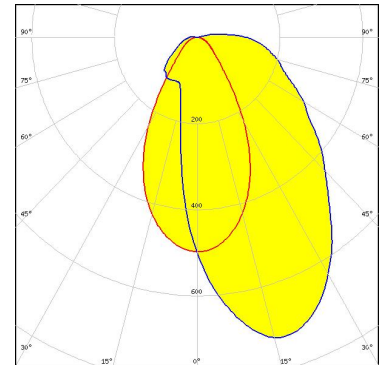
LED CXA/B 15xx
FWHM / FWTM Asymmetric
Efficiency 91 %
Peak intensity 1 cd/lm
LEDs/each optic 1
Light colour/type White
Required components:
C14123_CLAMP-CXA15-18



Light distribution files



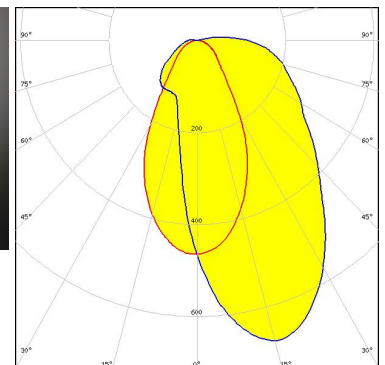
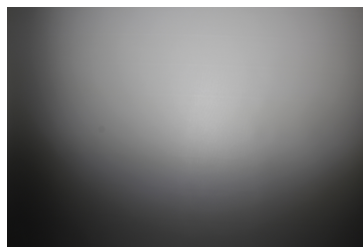
LED CXA/B 1816 & CXA/B 1820 & CXA 1850
FWHM / FWTM Asymmetric
Efficiency 91 %
Peak intensity 0.7 cd/lm
LEDs/each optic 1
Light colour/type White
Required components:
C14123_CLAMP-CXA15-18



Light distribution files



LED CXA/B 1816 & CXA/B 1820 & CXA 1850
FWHM / FWTM Asymmetric
Efficiency 87 %
Peak intensity 0.7 cd/lm
LEDs/each optic 1
Light colour/type White
Required components:
TE Connectivity: 2213401-2 + OPTIC CLIP Z50 TYPE1 2213194-1

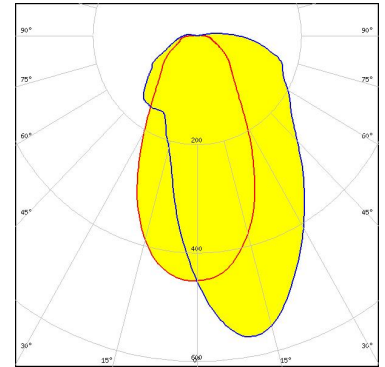


Light distribution files

OPTICAL RESULTS (MEASURED):



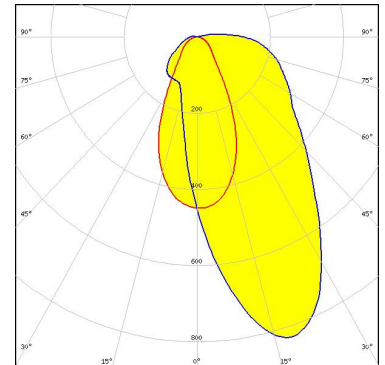
LED COB J-Type
FWHM / FWTM Asymmetric
Efficiency 83 %
Peak intensity 0.6 cd/lm
LEDs/each optic 1
Light colour/type White
Required components:
IDEAL: 50-2103NC + 50-2100AN



Light distribution files



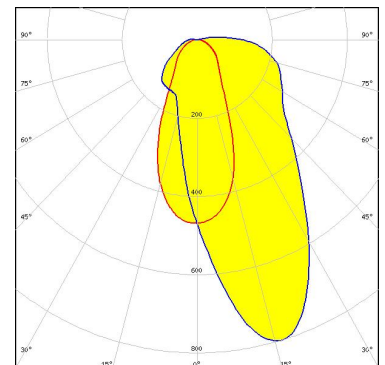
LED COB L-Type (LES 11)
FWHM / FWTM Asymmetric
Efficiency 87 %
Peak intensity 0.8 cd/lm
LEDs/each optic 1
Light colour/type White
Required components:
TE Connectivity: 2213382-2 + OPTIC CLIP Z50 TYPE1 2213194-1



Light distribution files



LED COB L-Type (LES 11)
FWHM / FWTM Asymmetric
Efficiency 84 %
Peak intensity 0.8 cd/lm
LEDs/each optic 1
Light colour/type White
Required components:
IDEAL: 50-2100NC + 50-2100AN

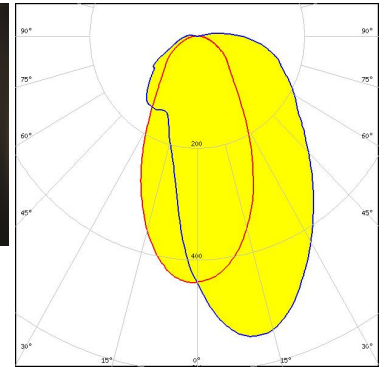
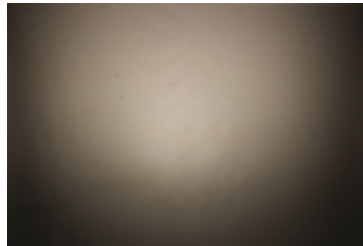


Light distribution files

OPTICAL RESULTS (MEASURED):

OSRAM

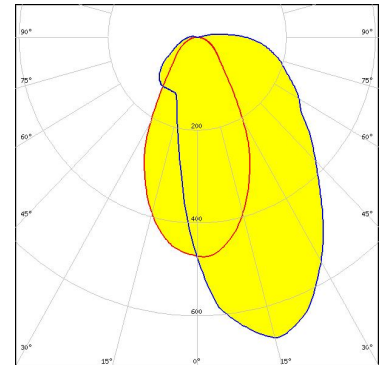
LED PrevaLED Core G7 L15 H1
 FWHM / FWTM Asymmetric
 Efficiency 78 %
 Peak intensity 0.6 cd/lm
 LEDs/each optic 1
 Light colour/type White
 Required components:
 C16685_CLAMP-PRV-A



Light distribution files

OSRAM Opto Semiconductors

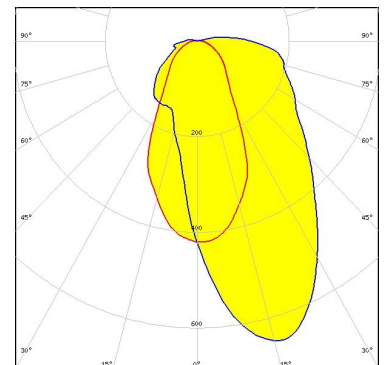
LED Soleriq S13 19x19
 FWHM / FWTM Asymmetric
 Efficiency 86 %
 Peak intensity 0.7 cd/lm
 LEDs/each optic 1
 Light colour/type White
 Required components:
 TE Connectivity: 2213254-2 + OPTIC CLIP Z50 TYPE1 2213194-1



Light distribution files

OSRAM Opto Semiconductors

LED Soleriq S13 19x19
 FWHM / FWTM Asymmetric
 Efficiency 85 %
 Peak intensity 0.7 cd/lm
 LEDs/each optic 1
 Light colour/type White
 Required components:
 IDEAL: 50-2103CT + 50-2100AN

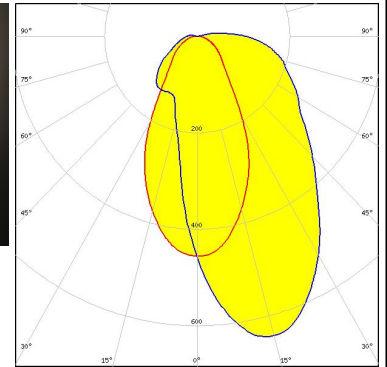
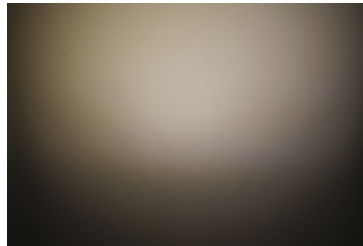


Light distribution files

OPTICAL RESULTS (MEASURED):

PHILIPS

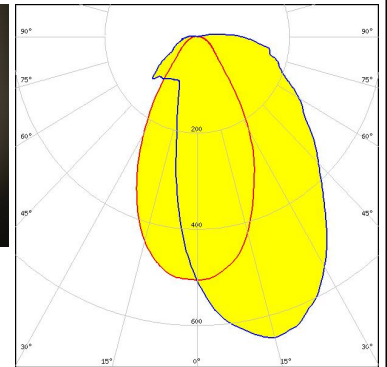
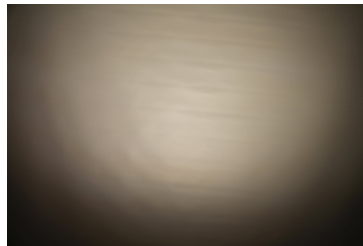
LED Fortimo SLM L13 + SLM holder
 FWHM / FWTM Asymmetric
 Efficiency 83 %
 Peak intensity 0.6 cd/lm
 LEDs/each optic 1
 Light colour/type White
 Required components:
 TE Connectivity: OPTIC CLIP Z50 TYPE1 2213194-1



Light distribution files

PHILIPS

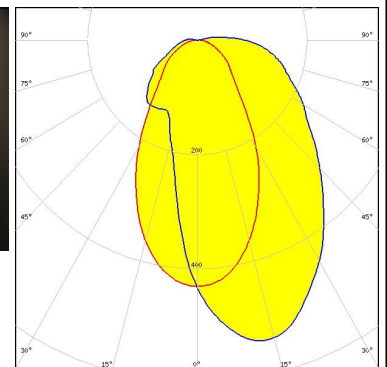
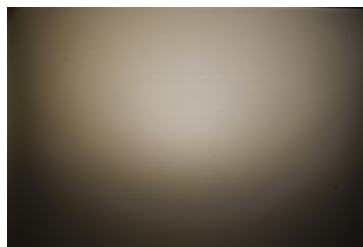
LED Fortimo SLM L13 CoB
 FWHM / FWTM Asymmetric
 Efficiency 85 %
 Peak intensity 0.7 cd/lm
 LEDs/each optic 1
 Light colour/type White
 Required components:
 TE Connectivity: 2213130-2 + OPTIC CLIP Z50 TYPE1 2213194-1



Light distribution files

PHILIPS

LED Fortimo SLM L15 + SLM holder
 FWHM / FWTM Asymmetric
 Efficiency 82 %
 Peak intensity 0.5 cd/lm
 LEDs/each optic 1
 Light colour/type White
 Required components:
 TE Connectivity: OPTIC CLIP Z50 TYPE1 2213194-1



Light distribution files

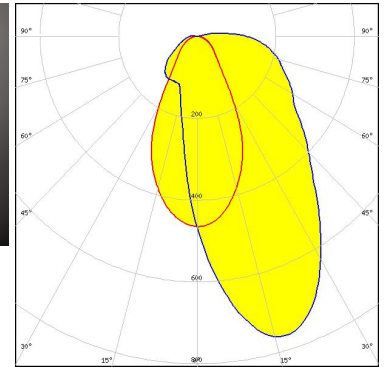
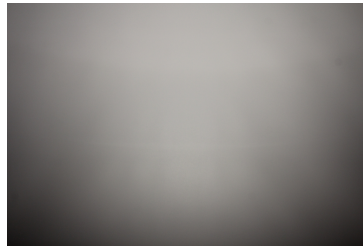
OPTICAL RESULTS (MEASURED):

SAMSUNG

LED LC040C
 FWHM / FWTM Asymmetric
 Efficiency 88 %
 Peak intensity 0.8 cd/lm
 LEDs/each optic 1
 Light colour/type White

Required components:

TE Connectivity: 2213382-2 + OPTIC CLIP Z50 TYPE1 2213194-1



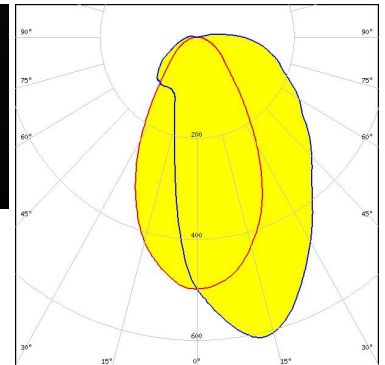
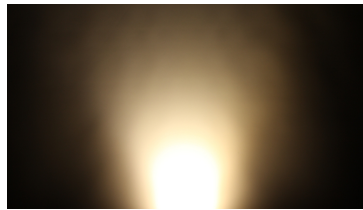
Light distribution files



LED AC Zhaga COB
 FWHM / FWTM Asymmetric
 Efficiency 86 %
 Peak intensity 0.6 cd/lm
 LEDs/each optic 1
 Light colour/type White

Required components:

Optosource: SEHSMJD-A



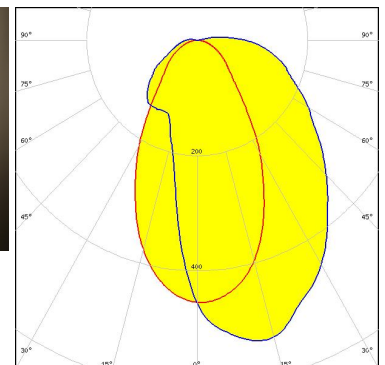
Light distribution files



LED MJT COB LES 14.5
 FWHM / FWTM Asymmetric
 Efficiency 82 %
 Peak intensity 0.5 cd/lm
 LEDs/each optic 1
 Light colour/type White

Required components:

TE Connectivity: 2213254-2 + OPTIC CLIP Z50 TYPE1 2213194-1

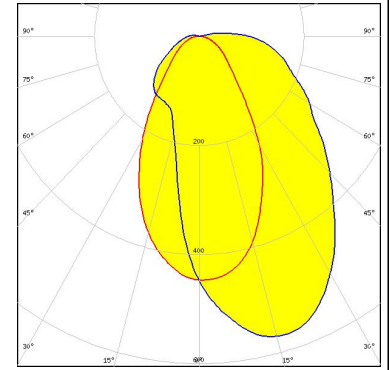


Light distribution files

OPTICAL RESULTS (MEASURED):



LED WU-M-484
FWHM / FWTM Asymmetric
Efficiency 84 %
Peak intensity 0.6 cd/lm
LEDs/each optic 1
Light colour/type White
Required components:
TE Connectivity: OPTIC CLIP Z50 TYPE1 2213194-1

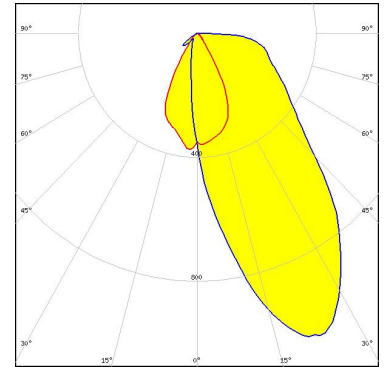


Light distribution files

OPTICAL RESULTS (SIMULATED):

bridgelux.

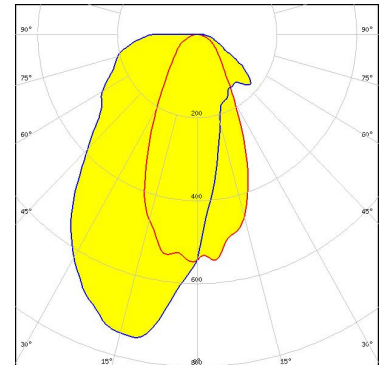
LED V10 Gen6
 FWHM / FWTM Asymmetric
 Efficiency 84 %
 Peak intensity 1.1 cd/lm
 LEDs/each optic 1
 Light colour/type White
 Required components:
 C14123_CLAMP-CXA15-18



Light distribution files

bridgelux.

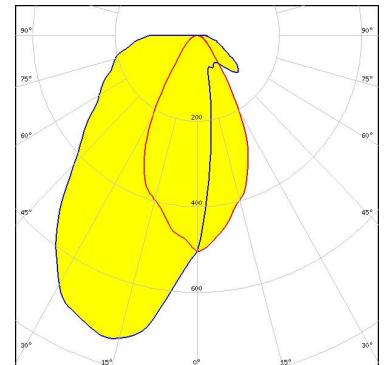
LED V13 Gen7
 FWHM / FWTM Asymmetric
 Efficiency 89 %
 Peak intensity 0.8 cd/lm
 LEDs/each optic 1
 Light colour/type White
 Required components:
 IDEAL: 50-2103CT + 50-2100AN



Light distribution files

bridgelux.

LED V13 Gen7
 FWHM / FWTM Asymmetric
 Efficiency 84 %
 Peak intensity 0.7 cd/lm
 LEDs/each optic 1
 Light colour/type White
 Required components:
 C13658_CLAMP-VERO13-18



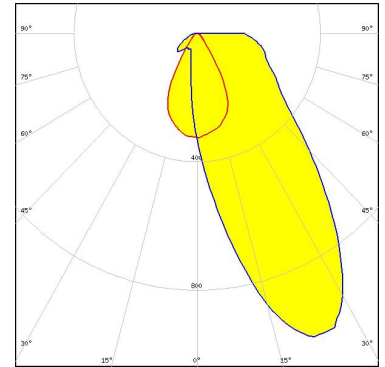
Light distribution files

Bender Wirth: 477 Typ L1

OPTICAL RESULTS (SIMULATED):

CITIZEN

LED CLL02x/CLU02x (LES10)
FWHM / FWTM Asymmetric
Efficiency 86 %
Peak intensity 1 cd/lm
LEDs/each optic 1
Light colour/type White
Required components:
C13658_CLAMP-VERO13-18

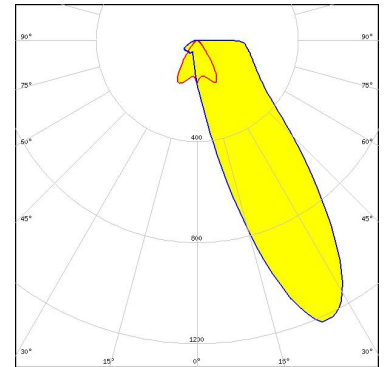


Bender Wirth: 434 Typ L1

Light distribution files

CITIZEN

LED CLU700/701/702/703
FWHM / FWTM Asymmetric
Efficiency 86 %
Peak intensity 1.2 cd/lm
LEDs/each optic 1
Light colour/type White
Required components:
C13658_CLAMP-VERO13-18

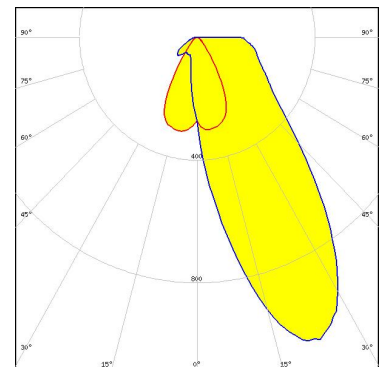


Bender Wirth: 434 Typ L1

Light distribution files

CITIZEN

LED CLU710/711
FWHM / FWTM Asymmetric
Efficiency 86 %
Peak intensity 1.1 cd/lm
LEDs/each optic 1
Light colour/type White
Required components:
C13658_CLAMP-VERO13-18



Bender Wirth: 470 Typ L1

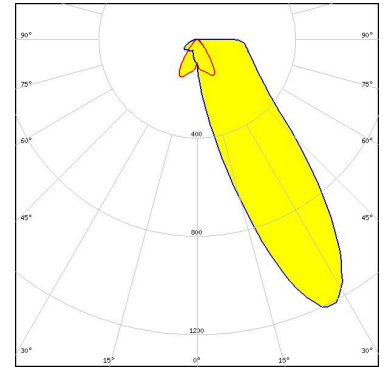
Light distribution files

OPTICAL RESULTS (SIMULATED):



LED CXA/B 13xx
 FWHM / FWTM Asymmetric
 Efficiency 87 %
 Peak intensity 1.2 cd/lm
 LEDs/each optic 1
 Light colour/type White

Required components:
 C13658_CLAMP-VERO13-18



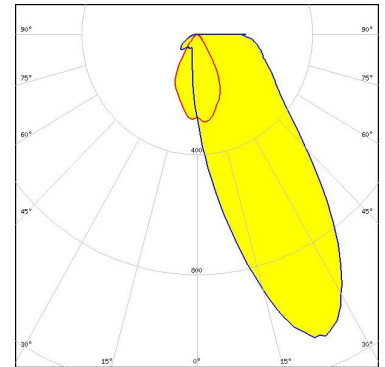
Bender Wirth: 448 Typ L1

Light distribution files



LED CXA/B 15xx
 FWHM / FWTM Asymmetric
 Efficiency 86 %
 Peak intensity 1.1 cd/lm
 LEDs/each optic 1
 Light colour/type White

Required components:
 C13658_CLAMP-VERO13-18



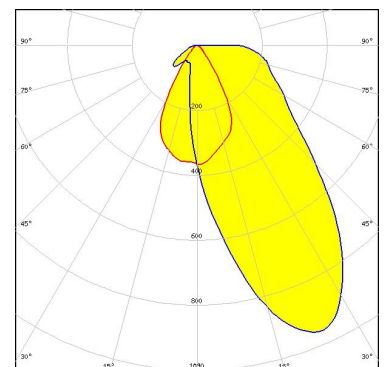
Bender Wirth: 441 Typ L1

Light distribution files



LED CXA/B 1816 & CXA/B 1820 & CXA 1850
 FWHM / FWTM Asymmetric
 Efficiency 86 %
 Peak intensity 1 cd/lm
 LEDs/each optic 1
 Light colour/type White

Required components:



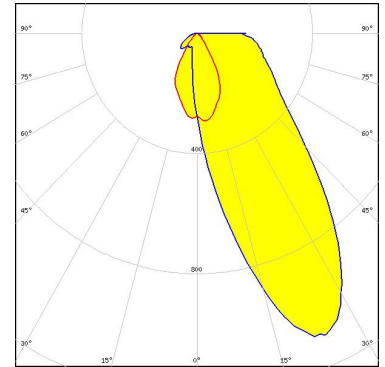
TE Connectivity: 2213401-2 + OPTIC CLIP Z50 TYPE1 2213194-1

Light distribution files

OPTICAL RESULTS (SIMULATED):



LED CXA/B 1816 & CXA/B 1820 & CXA 1850
FWHM / FWTM Asymmetric
Efficiency 86 %
Peak intensity 1 cd/lm
LEDs/each optic 1
Light colour/type White
Required components:
C13658_CLAMP-VERO13-18

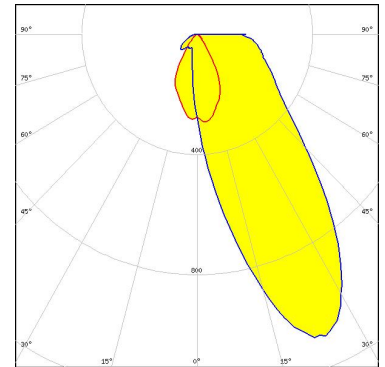


Bender Wirth: 437 Typ L1

Light distribution files



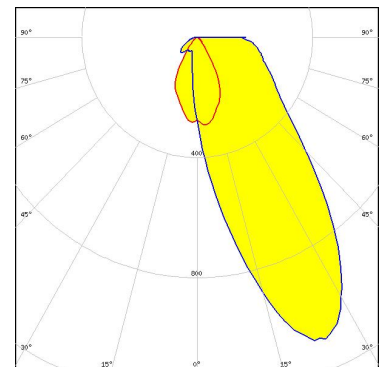
LED CXA/B 1816 & CXA/B 1820 & CXA 1850
FWHM / FWTM Asymmetric
Efficiency 86 %
Peak intensity 0.9 cd/lm
LEDs/each optic 1
Light colour/type White
Required components:
C14123_CLAMP-CXA15-18



Light distribution files



LED CXA/B 1830
FWHM / FWTM Asymmetric
Efficiency 85 %
Peak intensity 0.9 cd/lm
LEDs/each optic 1
Light colour/type White
Required components:
C14123_CLAMP-CXA15-18



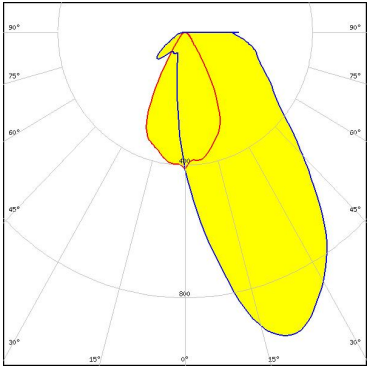
Light distribution files

OPTICAL RESULTS (SIMULATED):

LUMILEDS

LED	LUXEON CoB 1202/1203
FWHM / FWTM	Asymmetric
Efficiency	85 %
Peak intensity	1 cd/lm
LEDs/each optic	1
Light colour/type	White

Required components:
TE Connectivity: 2213382-2 + OPTIC CLIP Z50 TYPE1 2213194-1



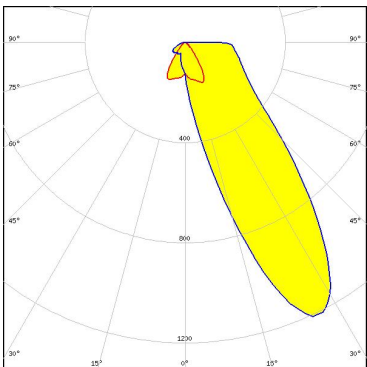
Light distribution files

LUMILEDS

LED	LUXEON CoB 1202s
FWHM / FWTM	Asymmetric
Efficiency	86 %
Peak intensity	1.2 cd/lm
LEDs/each optic	1
Light colour/type	White

Required components:
C13658_CLAMP-VERO13-18

Bender Wirth: 452 Typ L1

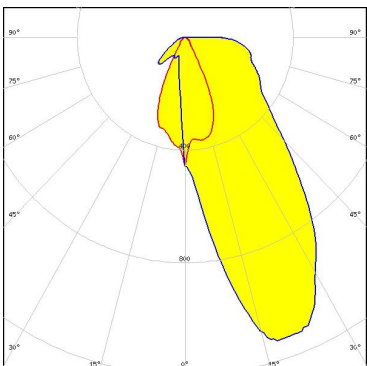


Light distribution files

NICHIA

LED	COB L-Type (LES 9)
FWHM / FWTM	Asymmetric
Efficiency	85 %
Peak intensity	1.1 cd/lm
LEDs/each optic	1
Light colour/type	White

Required components:
TE Connectivity: 2213382-2 + OPTIC CLIP Z50 TYPE1 2213194-1



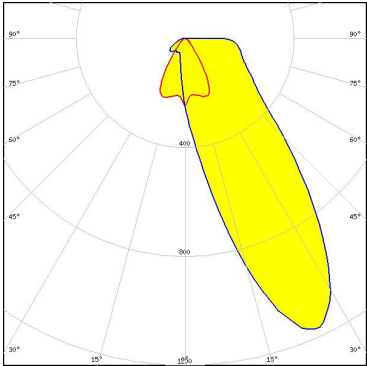
Light distribution files

OPTICAL RESULTS (SIMULATED):

NICHIA

LED	NSCxL036A
FWHM / FWTM	Asymmetric
Efficiency	86 %
Peak intensity	1.2 cd/lm
LEDs/each optic	1
Light colour/type	White

Required components:
TE Connectivity: 2213382-2 + OPTIC CLIP Z50 TYPE1 2213194-1

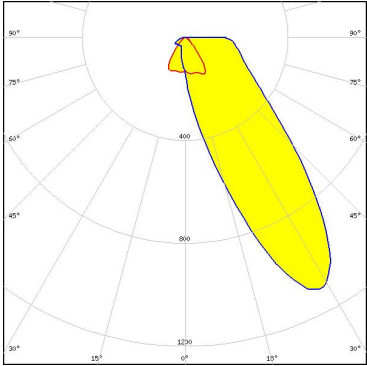


Light distribution files

OSRAM
Opto Semiconductors

LED	Duris S10
FWHM / FWTM	Asymmetric
Efficiency	86 %
Peak intensity	1.1 cd/lm
LEDs/each optic	1
Light colour/type	White

Required components:
C13658_CLAMP-VERO13-18

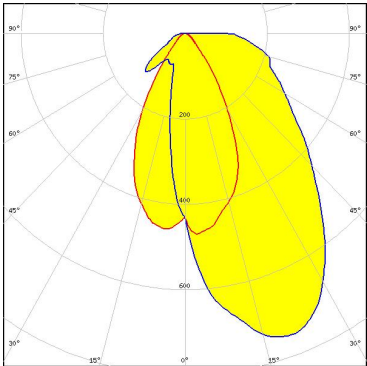


Light distribution files

OSRAM
Opto Semiconductors

LED	Soleriq S13
FWHM / FWTM	Asymmetric
Efficiency	82 %
Peak intensity	0.8 cd/lm
LEDs/each optic	1
Light colour/type	White

Required components:
C14123_CLAMP-CXA15-18



Light distribution files

OPTICAL RESULTS (SIMULATED):

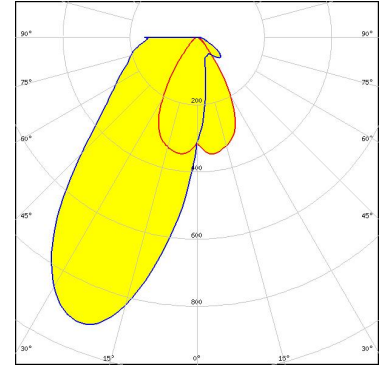
OSRAM
Opto Semiconductors

LED Soleriq S9
FWHM / FWTM Asymmetric
Efficiency 86 %
Peak intensity 0.9 cd/lm
LEDs/each optic 1
Light colour/type White

Required components:

C13658_CLAMP-VERO13-18

Bender Wirth: 434 Typ L1



Light distribution files

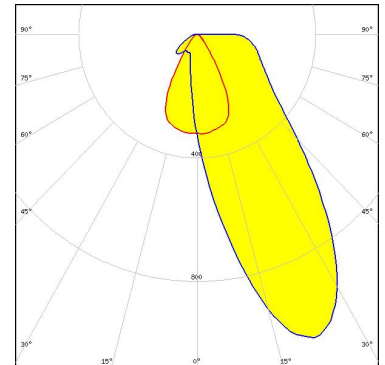
SHARP

LED Mini Zenigata (GW6BM)
FWHM / FWTM Asymmetric
Efficiency 85 %
Peak intensity 1.1 cd/lm
LEDs/each optic 1
Light colour/type White

Required components:

C13658_CLAMP-VERO13-18

Bender Wirth: 452 Typ L1



Light distribution files

GENERAL INFORMATION:

NOTE: The typical beam angle will be changed by different color, chip size and chip position tolerance. The typical total beam angle is the full angle measured where the luminous intensity is half of the peak value.

Due to use of high power COB's with this product, special attention to proper thermal design is highly recommended. LEDiL has no liability for direct, indirect or consecutive damages arising from the LEDiL products being used outside of the recommended temperature range.

MATERIALS:

As part of our continuous research and improvement processes, and to ensure the best possible quality and availability of our products, LEDiL reserves the right to change material grades without notice.

PRODUCT DATA USER AGREEMENT AND DISCLAIMER:

The measured data in the provided downloadable LEDiL Product Datasheets and Mechanical 2D-Drawings is rounded and provided as reference for planning. LEDiL Oy's optical specifications have been verified by conducting performance testing of the products in accordance with the company's quality system. The reported data are averaged results of multiple measurements with typical variation. LEDiL Oy reserves the right to without prior notification make changes and improvements to its products.

LEDiL Oy assumes neither warranty, nor guarantee nor any other liability of any kind for the contents and correctness of the provided data. The provided data has been generated with highest diligence but the provided data may in reality not represent the complete possible variation range of all intrinsic parameters. Therefore, in certain cases a deviation from the provided data could occur.

LEDiL Oy reserves the right to undertake technical changes of its products without further notification which could lead to changes in the provided data. LEDiL Oy assumes no liability of any kind for the possible deviation from any provided data or any other damage resulting from the usage of the provided data.

The user agrees to this disclaimer and user agreement with the download or usage of the provided files.

LEDiL Oy

Joensuunkatu 13
FI-24240 SALO
Finland

LEDiL Inc.

228 West Page Street
Suite D
Sycamore IL 60178
USA

Ledil Optics Technology (Shenzhen) Co., Ltd.

405 , Block B
Casic Motor Building
Shenzhen 518057
P.R.CHINA

Local sales and technical support

[www.ledil.com/
where_to_buy](http://www.ledil.com/where_to_buy)

Shipping locations

Poznan, Poland
Hong Kong, China

Distribution Partners

[www.ledil.com/
where_to_buy](http://www.ledil.com/where_to_buy)