

SURI-RS

~6° real spot beam. Assembly with holder and installation tape.

SPECIFICATION:

Dimensions	Ø 37.8 mm
Height	24 mm
Fastening	tape, pin
ROHS compliant	yes ⓘ

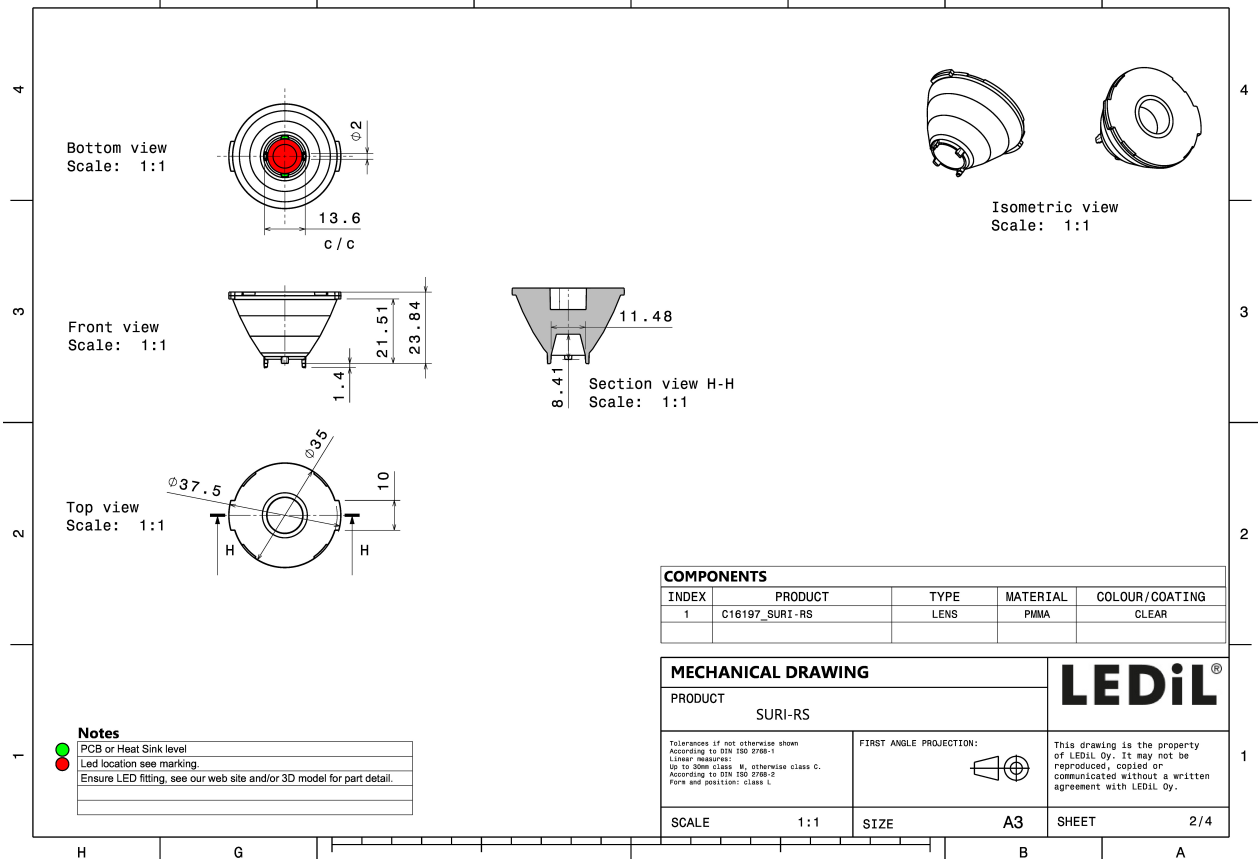
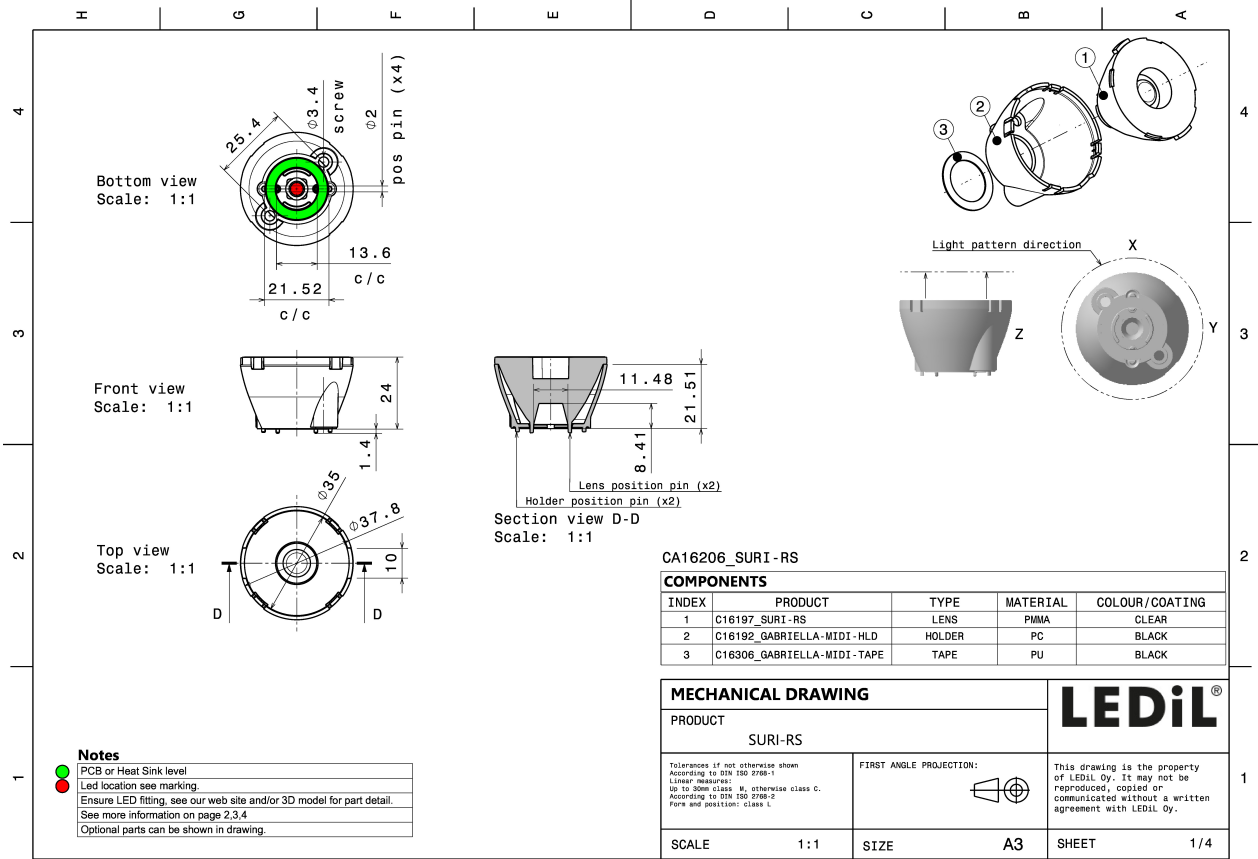


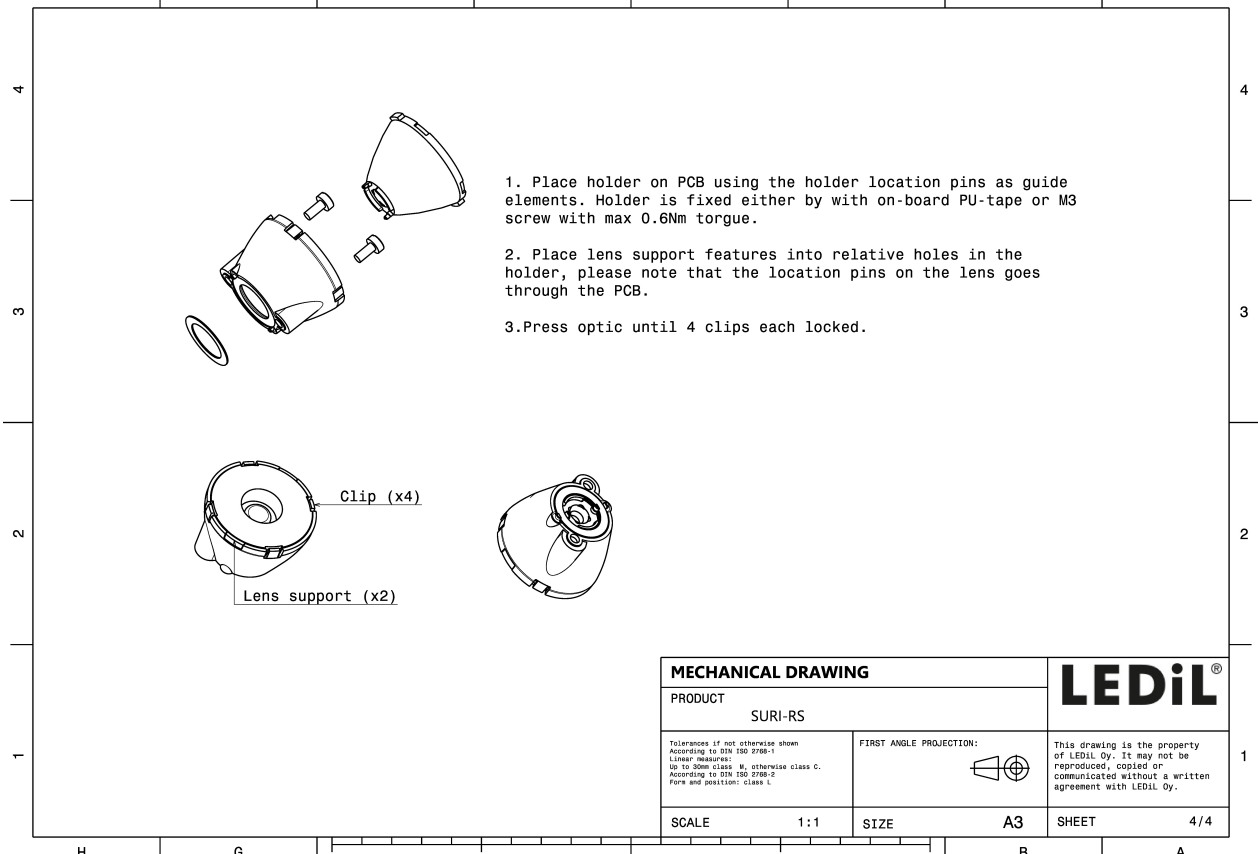
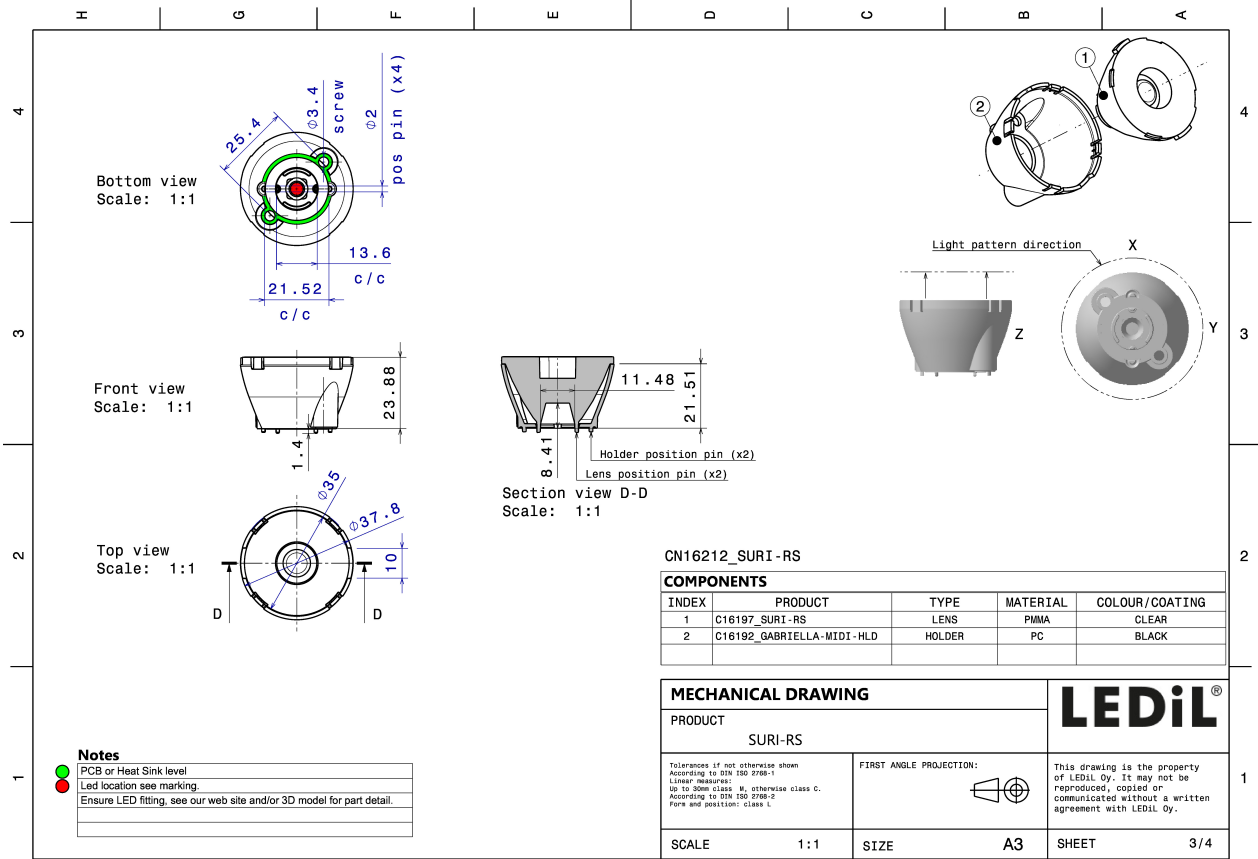
MATERIALS:

Component	Type	Material	Colour	Finish	Length
SURI-RS	Single lens	PMMA	clear		37.8
GABRIELLA-MIDI-HLD	Assembly	PC	black		

ORDERING INFORMATION:

Component	Qty in box	MOQ	MPQ	Box weight (kg)
CA16206_SURI-RS » Box size: 476 x 273 x 292 mm	500	100	50	11.7



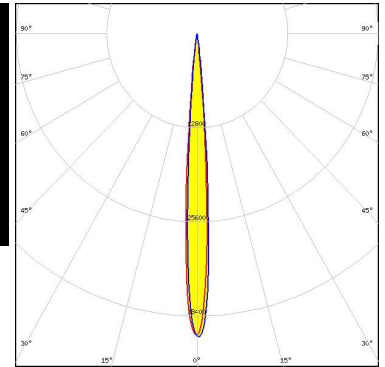
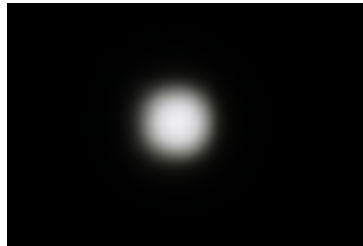


See also our general installation guide: www.ledil.com/installation_guide

OPTICAL RESULTS (MEASURED):



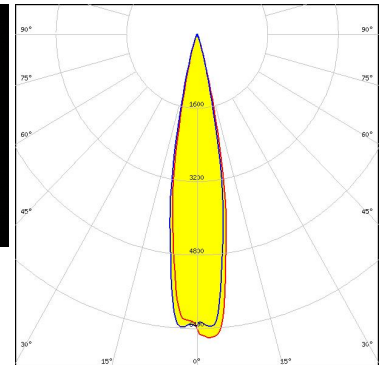
LED XHP35 HI
FWHM / FWTM 8.0° / 13.0°
Efficiency 91 %
Peak intensity 41 cd/lm
LEDs/each optic 1
Light colour/type White
Required components:



Light distribution files



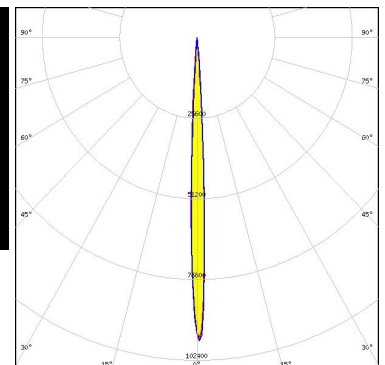
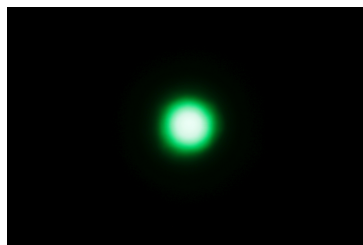
LED XHP70.2
FWHM / FWTM 20.0° / 32.0°
Efficiency 87 %
Peak intensity 6.6 cd/lm
LEDs/each optic 1
Light colour/type White
Required components:



Light distribution files



LED XP-E2
FWHM / FWTM 5.0° / 9.0°
Efficiency 93 %
Peak intensity 101 cd/lm
LEDs/each optic 1
Light colour/type Green
Required components:

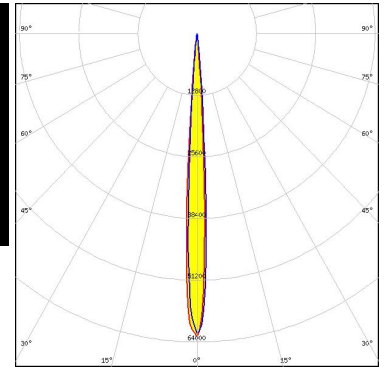


Light distribution files

OPTICAL RESULTS (MEASURED):



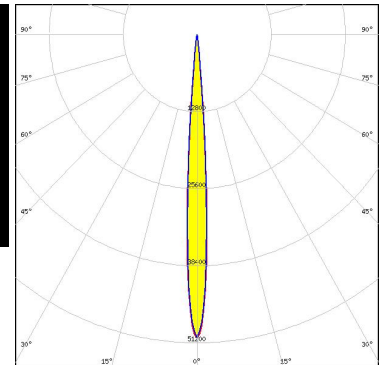
LED XP-G2
 FWHM / FWTM 7.0° / 11.0°
 Efficiency 94 %
 Peak intensity 63.1 cd/lm
 LEDs/each optic 1
 Light colour/type White
 Required components:



Light distribution files



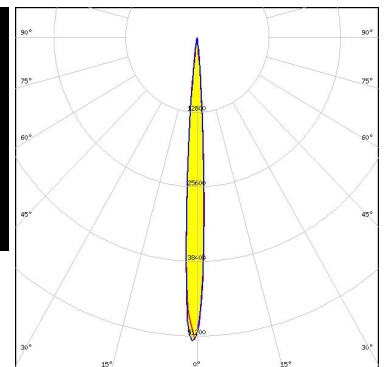
LED XP-G4
 FWHM / FWTM 7.0° / 13.0°
 Efficiency 94 %
 Peak intensity 50.4 cd/lm
 LEDs/each optic 1
 Light colour/type White
 Required components:



Light distribution files



LED XP-L HI
 FWHM / FWTM 7.0° / 12.0°
 Efficiency 91 %
 Peak intensity 52.4 cd/lm
 LEDs/each optic 1
 Light colour/type White
 Required components:



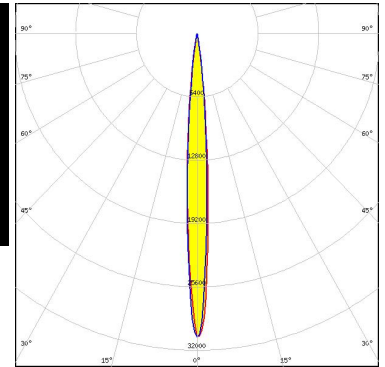
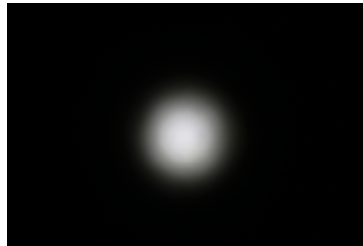
Light distribution files

OPTICAL RESULTS (MEASURED):



LED XP-L HI
 FWHM / FWTM 8.0° / 17.0°
 Efficiency 90 %
 Peak intensity 30.6 cd/lm
 LEDs/each optic 1
 Light colour/type White
 Required components:

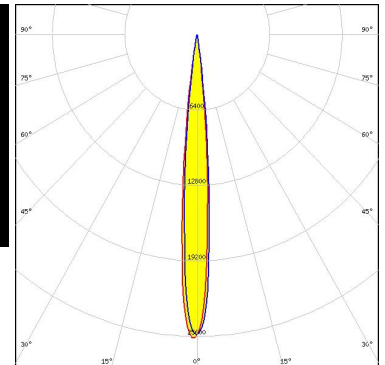
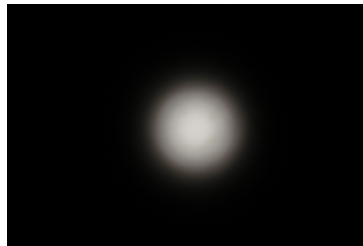
Protective plate, glass



Light distribution files



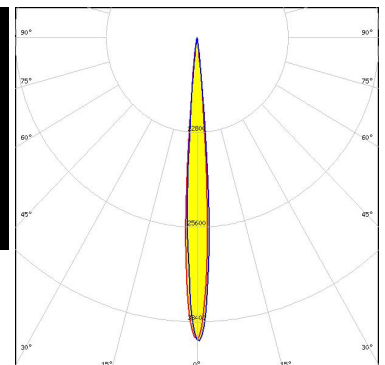
LED LUXEON V
 FWHM / FWTM 10.0° / 17.0°
 Efficiency 88 %
 Peak intensity 26 cd/lm
 LEDs/each optic 1
 Light colour/type White
 Required components:



Light distribution files



LED NVSW219F
 FWHM / FWTM 8.0° / 13.0°
 Efficiency 91 %
 Peak intensity 41 cd/lm
 LEDs/each optic 1
 Light colour/type White
 Required components:

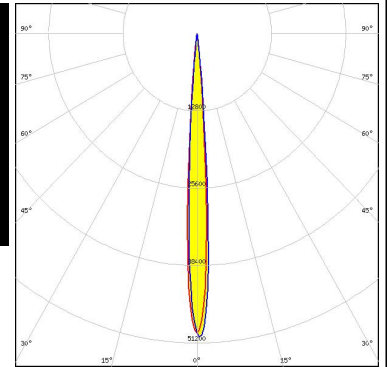


Light distribution files

OPTICAL RESULTS (MEASURED):



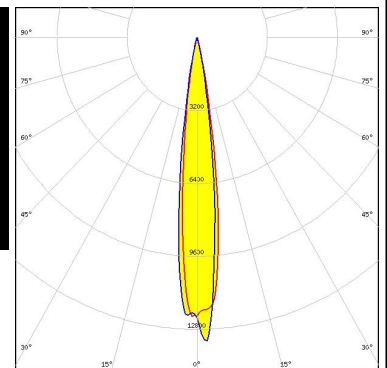
LED NVSW719AC
 FWHM / FWTM 7.0° / 12.0°
 Efficiency 91 %
 Peak intensity 50.5 cd/lm
 LEDs/each optic 1
 Light colour/type White
 Required components:



Light distribution files



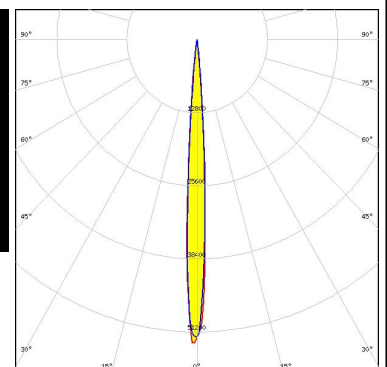
LED Duris S8
 FWHM / FWTM 14.0° / 24.0°
 Efficiency 90 %
 Peak intensity 13 cd/lm
 LEDs/each optic 1
 Light colour/type White
 Required components:



Light distribution files



LED OSLON Square CSSRM2/CSSRM3
 FWHM / FWTM 7.0° / 12.0°
 Efficiency 91 %
 Peak intensity 53 cd/lm
 LEDs/each optic 1
 Light colour/type White
 Required components:

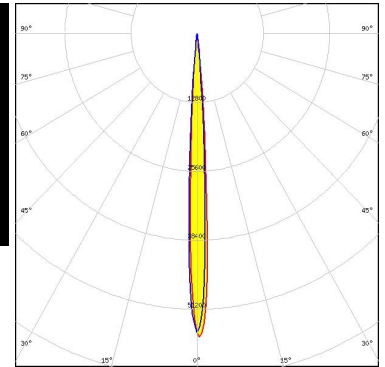


Light distribution files

OPTICAL RESULTS (MEASURED):

OSRAM
Opto Semiconductors

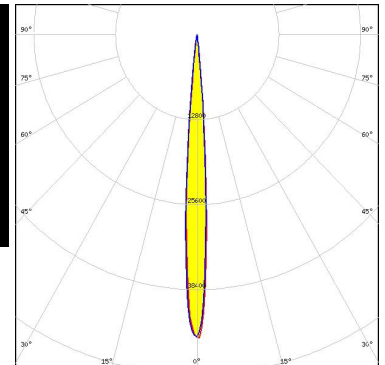
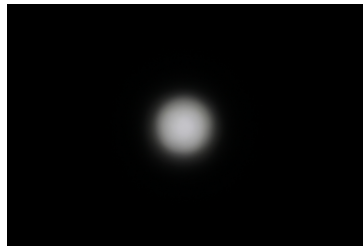
LED OSLON Square EC
FWHM / FWTM 6.0° / 12.0°
Efficiency 90 %
Peak intensity 56 cd/lm
LEDs/each optic 1
Light colour/type White
Required components:



Light distribution files

SAMSUNG

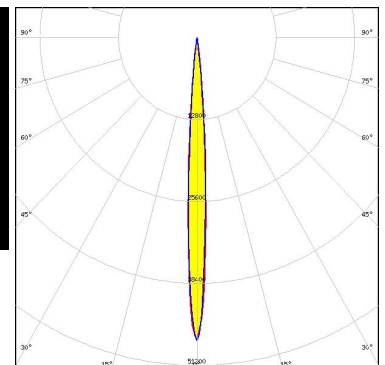
LED LH351B
FWHM / FWTM 8.0° / 13.0°
Efficiency 93 %
Peak intensity 45.6 cd/lm
LEDs/each optic 1
Light colour/type White
Required components:



Light distribution files

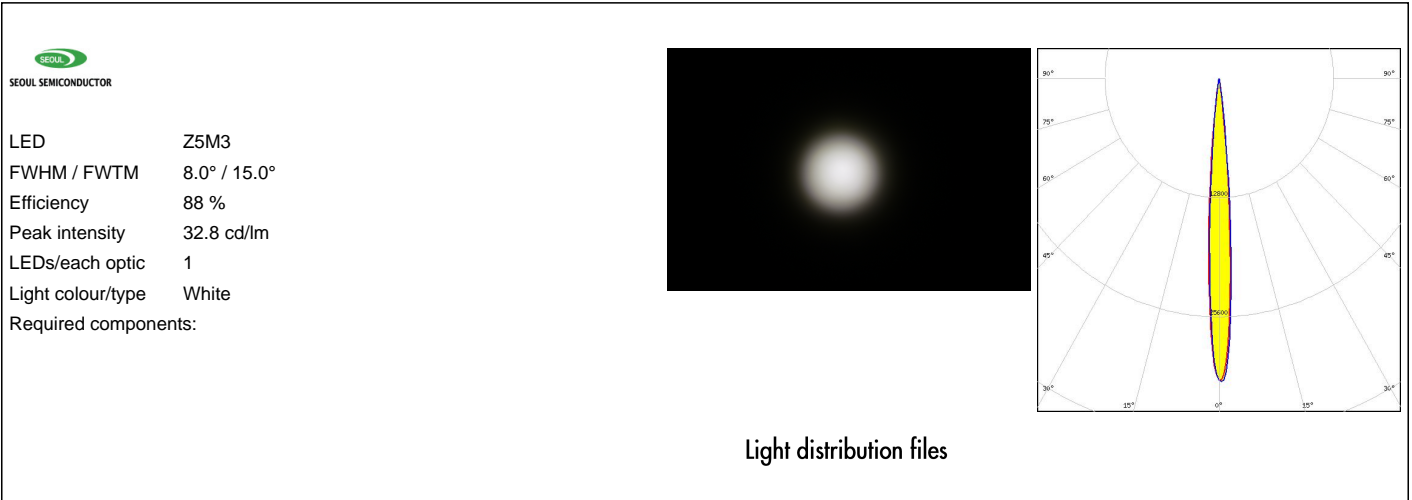
SAMSUNG

LED LM302A
FWHM / FWTM 7.0° / 13.0°
Efficiency 92 %
Peak intensity 47 cd/lm
LEDs/each optic 1
Light colour/type White
Required components:



Light distribution files

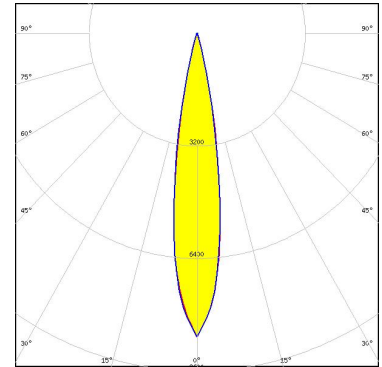
OPTICAL RESULTS (MEASURED):



OPTICAL RESULTS (SIMULATED):



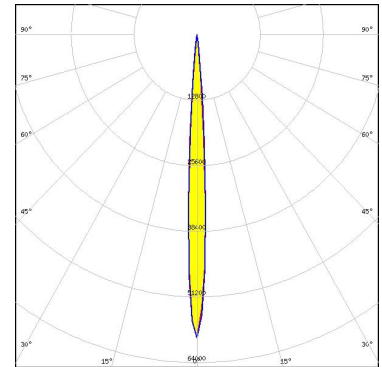
LED MHD-E/G
 FWHM / FWTM 18.0° / 30.0°
 Efficiency 91 %
 Peak intensity 8.6 cd/lm
 LEDs/each optic 1
 Light colour/type White
 Required components:



Light distribution files



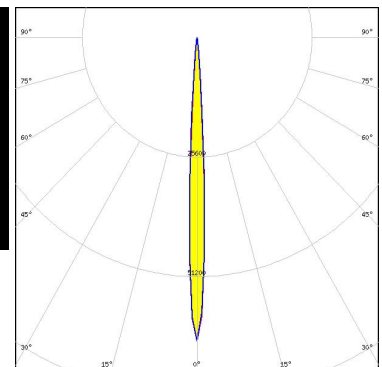
LED XB-H
 FWHM / FWTM 6.0° / 12.0°
 Efficiency 90 %
 Peak intensity 59.2 cd/lm
 LEDs/each optic 1
 Light colour/type White
 Required components:



Light distribution files



LED XD16
 FWHM / FWTM 5.9° / 11.0°
 Efficiency 89 %
 Peak intensity 65 cd/lm
 LEDs/each optic 1
 Light colour/type White
 Required components:

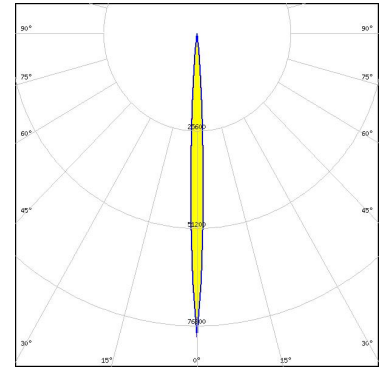


Light distribution files

OPTICAL RESULTS (SIMULATED):



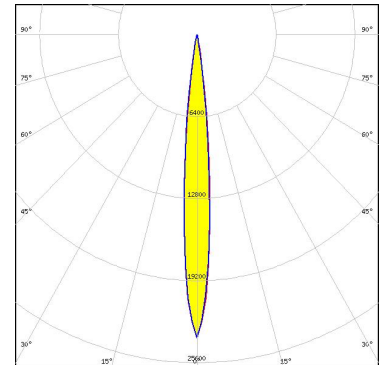
LED XE-G
FWHM / FWTM 6.0° / 10.0°
Efficiency 89 %
Peak intensity 79.7 cd/lm
LEDs/each optic 1
Light colour/type White
Required components:



Light distribution files



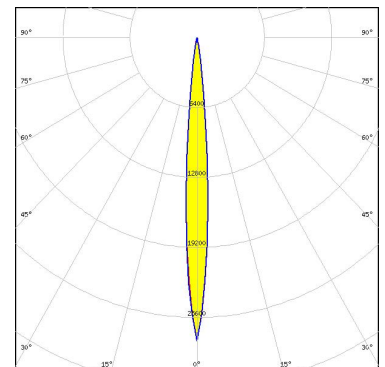
LED XHP35 HD
FWHM / FWTM 10.0° / 18.0°
Efficiency 91 %
Peak intensity 23.7 cd/lm
LEDs/each optic 1
Light colour/type White
Required components:



Light distribution files



LED XHP35.2 HD
FWHM / FWTM 8.0° / 18.0°
Efficiency 87 %
Peak intensity 27.8 cd/lm
LEDs/each optic 1
Light colour/type White
Required components:

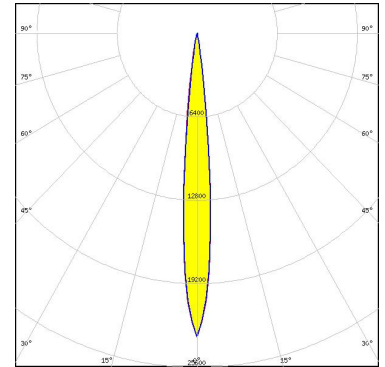


Light distribution files

OPTICAL RESULTS (SIMULATED):



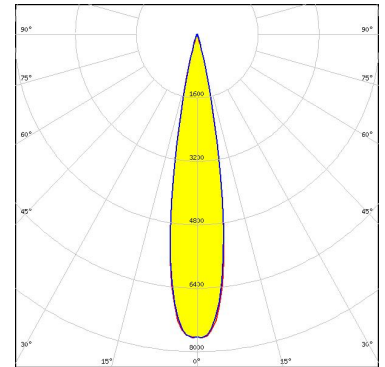
LED XHP50.3 HI
 FWHM / FWTM 10.0° / 18.0°
 Efficiency 96 %
 Peak intensity 23.3 cd/lm
 LEDs/each optic 1
 Light colour/type White
 Required components:



Light distribution files



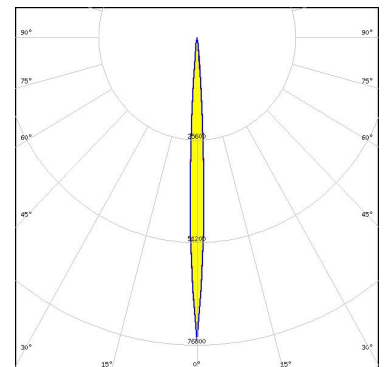
LED XHP70.3 HI
 FWHM / FWTM 20.0° / 30.0°
 Efficiency 95 %
 Peak intensity 7.7 cd/lm
 LEDs/each optic 1
 Light colour/type White
 Required components:



Light distribution files



LED XP-E
 FWHM / FWTM 6.0° / 12.0°
 Efficiency 92 %
 Peak intensity 75.7 cd/lm
 LEDs/each optic 1
 Light colour/type White
 Required components:

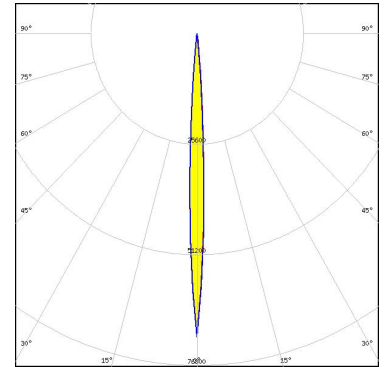


Light distribution files

OPTICAL RESULTS (SIMULATED):



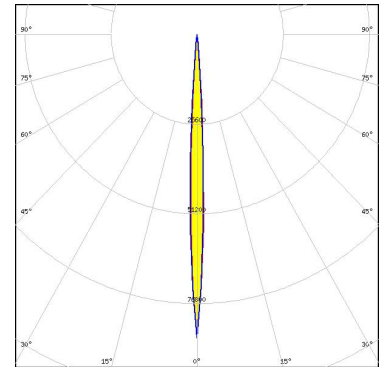
LED XP-E2
 FWHM / FWTM 6.0° / 12.0°
 Efficiency 90 %
 Peak intensity 70.2 cd/lm
 LEDs/each optic 1
 Light colour/type Red
 Required components:



Light distribution files



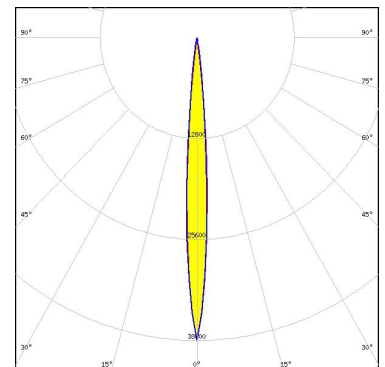
LED XP-E2
 FWHM / FWTM 5.0° / 10.0°
 Efficiency 91 %
 Peak intensity 85 cd/lm
 LEDs/each optic 1
 Light colour/type White
 Required components:



Light distribution files



LED XP-G2 HE
 FWHM / FWTM 8.0° / 14.0°
 Efficiency 90 %
 Peak intensity 38.5 cd/lm
 LEDs/each optic 1
 Light colour/type White
 Required components:

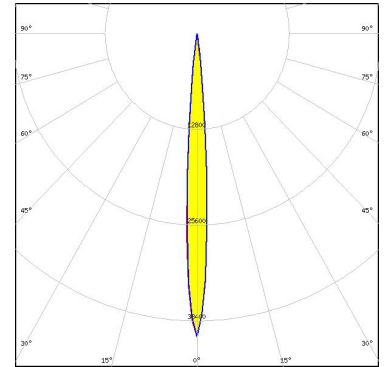


Light distribution files

OPTICAL RESULTS (SIMULATED):



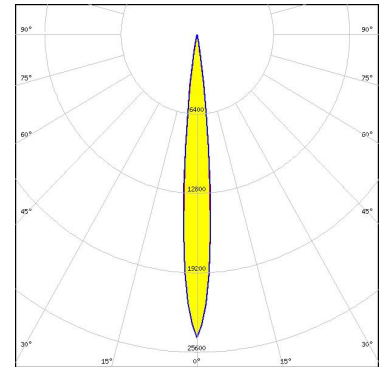
LED XP-G3
 FWHM / FWTM 7.7° / 14.0°
 Efficiency 90 %
 Peak intensity 40.5 cd/lm
 LEDs/each optic 1
 Light colour/type White
 Required components:



Light distribution files



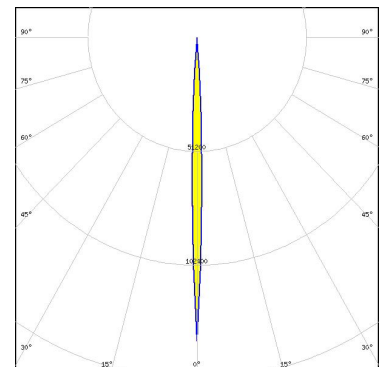
LED XP-L2
 FWHM / FWTM 10.0° / 18.0°
 Efficiency 89 %
 Peak intensity 24.4 cd/lm
 LEDs/each optic 1
 Light colour/type White
 Required components:



Light distribution files



LED XP-P
 FWHM / FWTM 4.0° / 8.0°
 Efficiency 90 %
 Peak intensity 136.5 cd/lm
 LEDs/each optic 1
 Light colour/type White
 Required components:

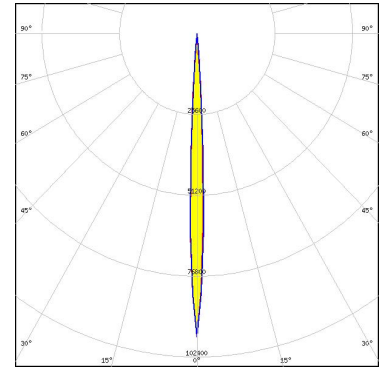


Light distribution files

OPTICAL RESULTS (SIMULATED):



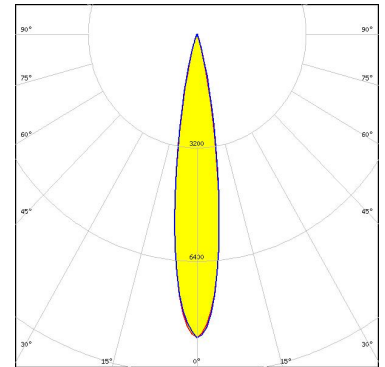
LED XQ-E HD
 FWHM / FWTM 5.2° / 9.5°
 Efficiency 92 %
 Peak intensity 96.1 cd/lm
 LEDs/each optic 1
 Light colour/type White
 Required components:



Light distribution files



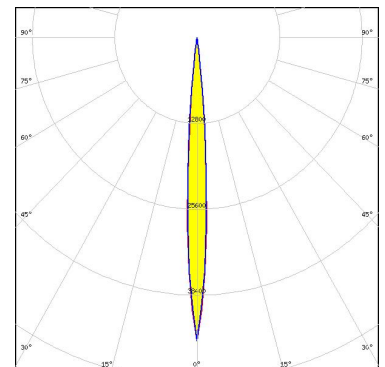
LED LUXEON 7070
 FWHM / FWTM 16.0° / 30.0°
 Efficiency 90 %
 Peak intensity 8.6 cd/lm
 LEDs/each optic 1
 Light colour/type White
 Required components:



Light distribution files



LED LUXEON HL2X
 FWHM / FWTM 8.0° / 14.0°
 Efficiency 92 %
 Peak intensity 45.2 cd/lm
 LEDs/each optic 1
 Light colour/type White
 Required components:



Light distribution files

OPTICAL RESULTS (SIMULATED):

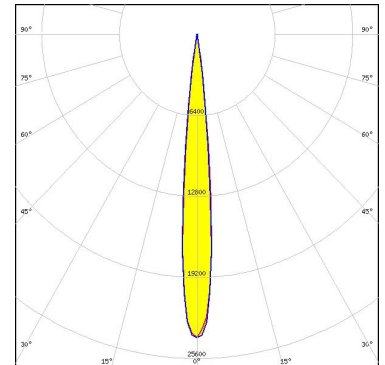


LED	LUXEON HL2Z
FWHM / FWTM	6.0° / 12.0°
Efficiency	90 %
Peak intensity	58.9 cd/lm
LEDs/each optic	1
Light colour/type	White
Required components:	

Light distribution files



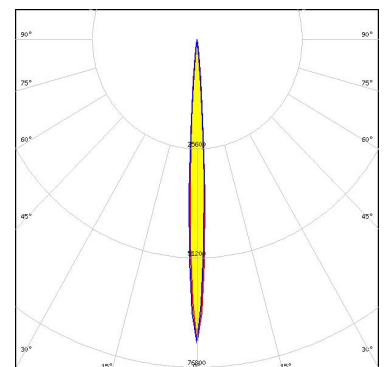
LED	LUXEON MZ
FWHM / FWTM	10.5° / 17.8°
Efficiency	94 %
Peak intensity	24.3 cd/lm
LEDs/each optic	1
Light colour/type	White
Required components:	



Light distribution files



LED	LUXEON Rebel Plus
FWHM / FWTM	6.0° / 11.0°
Efficiency	89 %
Peak intensity	71.1 cd/lm
LEDs/each optic	1
Light colour/type	White
Required components:	

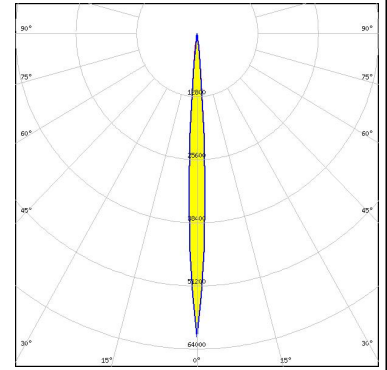


Light distribution files

OPTICAL RESULTS (SIMULATED):



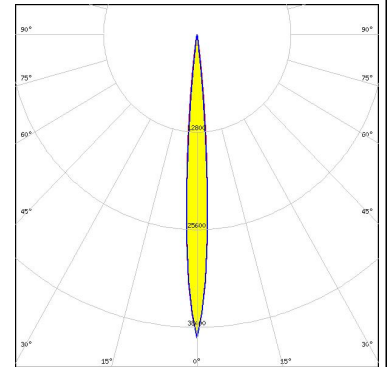
LED SFT-40-WCS
 FWHM / FWTM 6.0° / 12.0°
 Efficiency 95 %
 Peak intensity 61.6 cd/lm
 LEDs/each optic 1
 Light colour/type White
 Required components:



Light distribution files



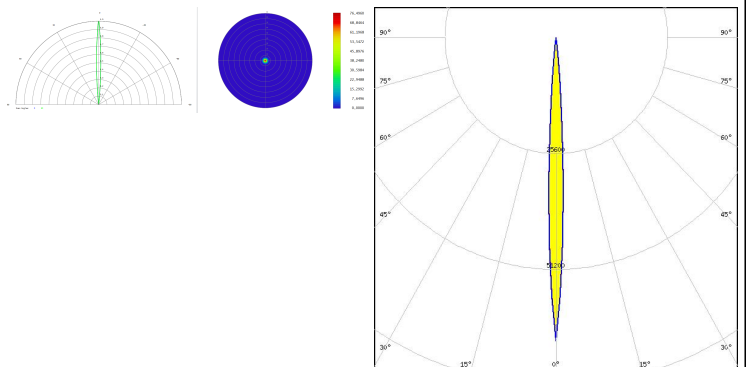
LED SFT-70X-WCS
 FWHM / FWTM 8.0° / 14.0°
 Efficiency 96 %
 Peak intensity 39.8 cd/lm
 LEDs/each optic 1
 Light colour/type White
 Required components:



Light distribution files



LED SST-10-B130
 FWHM / FWTM 6.0° / 11.0°
 Efficiency 91 %
 LEDs/each optic 1
 Light colour/type IR
 Required components:

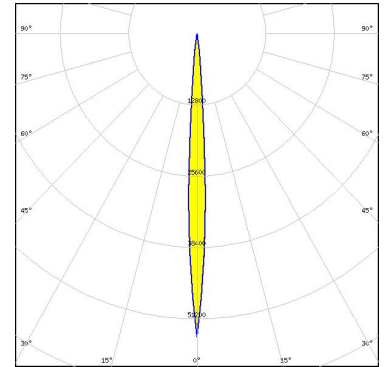


Light distribution files

OPTICAL RESULTS (SIMULATED):



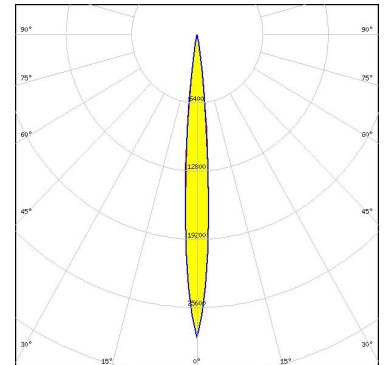
LED SST-20
 FWHM / FWTM 6.0° / 12.0°
 Efficiency 90 %
 Peak intensity 54.4 cd/lm
 LEDs/each optic 1
 Light colour/type White
 Required components:



Light distribution files



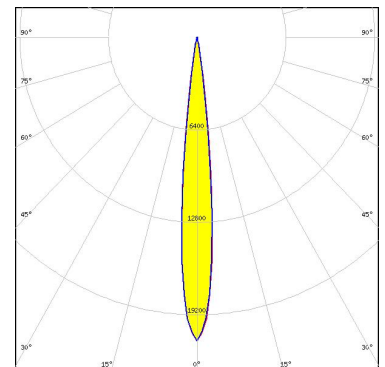
LED SST-40
 FWHM / FWTM 10.0° / 18.0°
 Efficiency 91 %
 Peak intensity 28.5 cd/lm
 LEDs/each optic 1
 Light colour/type White
 Required components:



Light distribution files



LED SST-70X-WCS
 FWHM / FWTM 12.0° / 20.0 + 18.0°
 Efficiency 96 %
 Peak intensity 21 cd/lm
 LEDs/each optic 1
 Light colour/type White
 Required components:

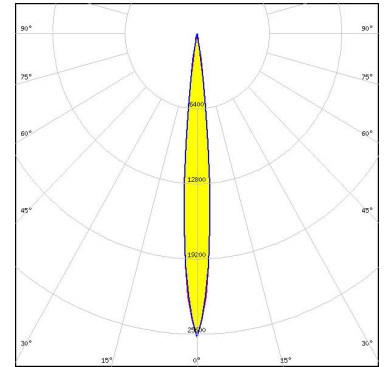


Light distribution files

OPTICAL RESULTS (SIMULATED):



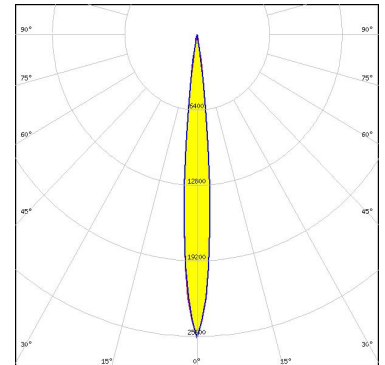
LED NV4WB35AM
FWHM / FWTM 10.0° / 18.0°
Efficiency 91 %
Peak intensity 25.8 cd/lm
LEDs/each optic 1
Light colour/type White
Required components:



Light distribution files



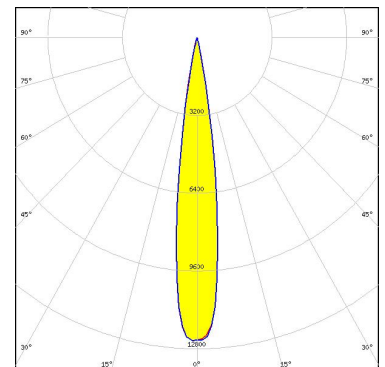
LED NV4WB35AM
FWHM / FWTM 10.0° / 18.0°
Efficiency 91 %
Peak intensity 25.7 cd/lm
LEDs/each optic 1
Light colour/type White
Required components:



Light distribution files

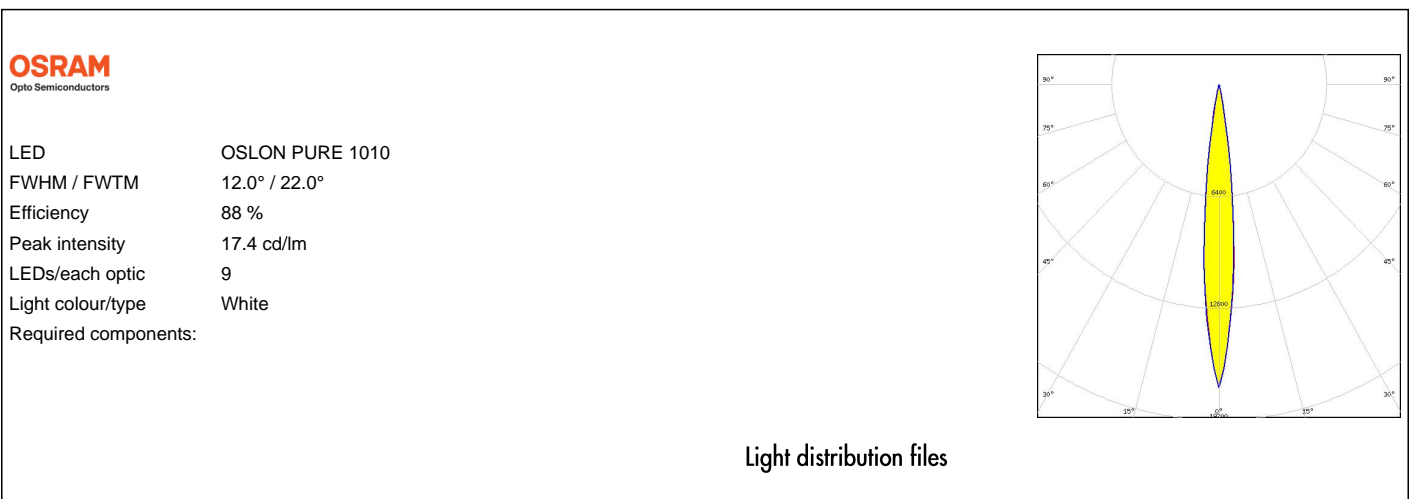
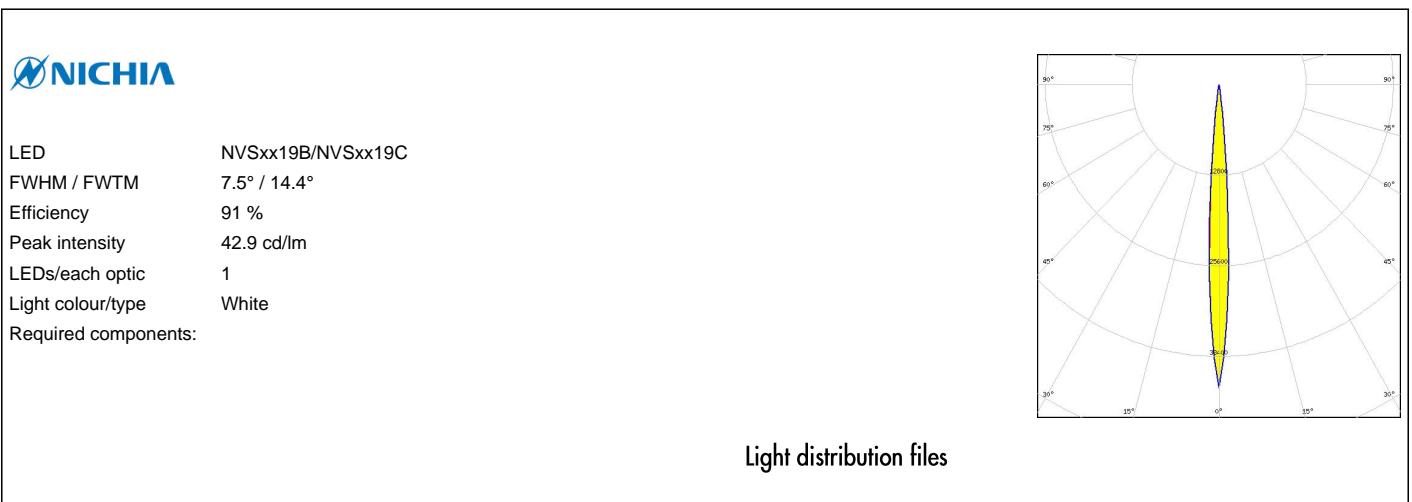
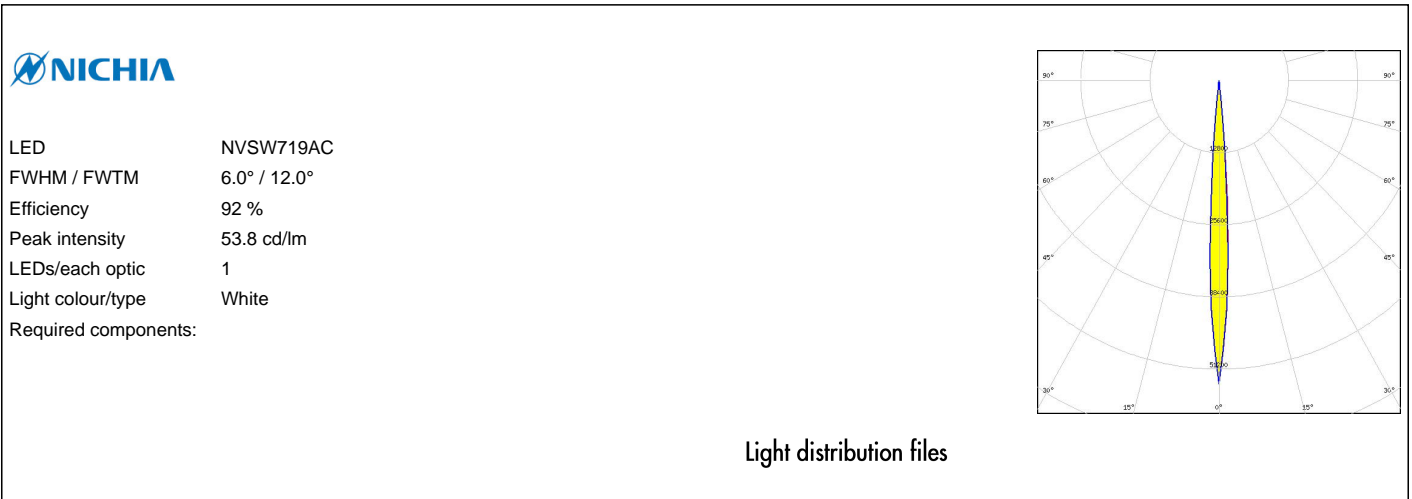


LED NV4x144A
FWHM / FWTM 15.0° / 24.0°
Efficiency 89 %
Peak intensity 12.6 cd/lm
LEDs/each optic 1
Light colour/type White
Required components:



Light distribution files

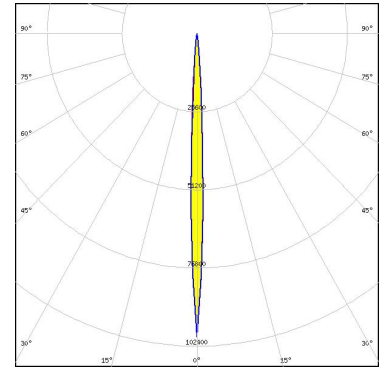
OPTICAL RESULTS (SIMULATED):



OPTICAL RESULTS (SIMULATED):

OSRAM
Opto Semiconductors

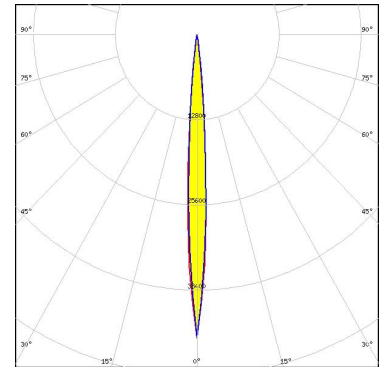
LED OSLON Pure 1414
 FWHM / FWTM 4.0° / 10.0°
 Efficiency 94 %
 Peak intensity 99.4 cd/lm
 LEDs/each optic 1
 Light colour/type White
 Required components:



Light distribution files

OSRAM
Opto Semiconductors

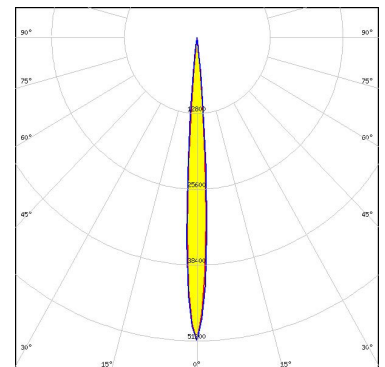
LED OSLON Square CSSRM2/CSSRM3
 FWHM / FWTM 7.0° / 14.0°
 Efficiency 92 %
 Peak intensity 46 cd/lm
 LEDs/each optic 1
 Light colour/type White
 Required components:



Light distribution files

OSRAM
Opto Semiconductors

LED SFH 4715AS
 FWHM / FWTM 8.0° / 12.0°
 Efficiency 90 %
 LEDs/each optic 1
 Light colour/type IR
 Required components:

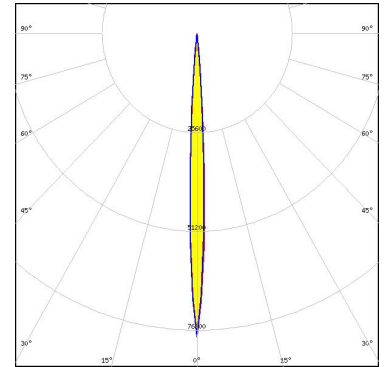


Light distribution files

OPTICAL RESULTS (SIMULATED):

OSRAM
Opto Semiconductors

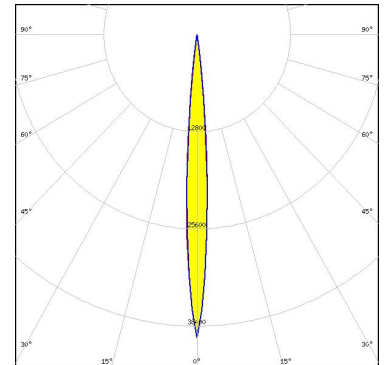
LED SFH 4716AS
FWHM / FWTM 6.0° / 10.0°
Efficiency 90 %
LEDs/each optic 1
Light colour/type IR
Required components:



Light distribution files

SAMSUNG

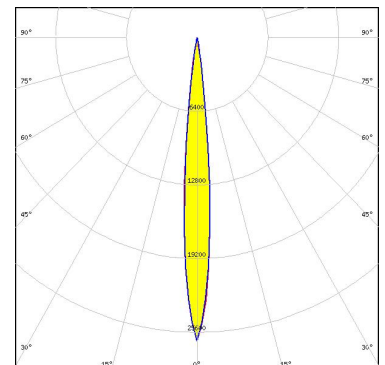
LED LH351C
FWHM / FWTM 8.0° / 14.0°
Efficiency 92 %
Peak intensity 39.9 cd/lm
LEDs/each optic 1
Light colour/type White
Required components:



Light distribution files

SAMSUNG

LED LH351D
FWHM / FWTM 10.0° / 18.0°
Efficiency 91 %
Peak intensity 26.4 cd/lm
LEDs/each optic 1
Light colour/type White
Required components:

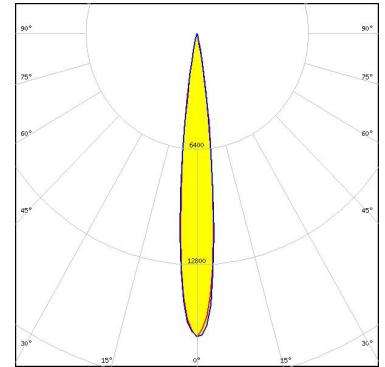


Light distribution files

OPTICAL RESULTS (SIMULATED):

SAMSUNG

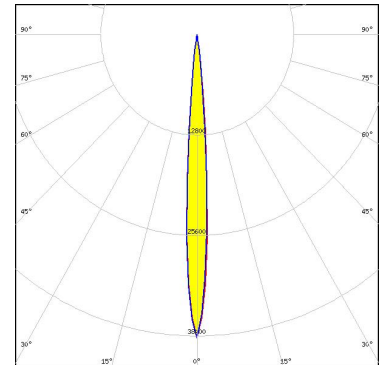
LED LH502D
 FWHM / FWTM 12.0° / 22.0°
 Efficiency 91 %
 Peak intensity 16.8 cd/m
 LEDs/each optic 1
 Light colour/type White
 Required components:



Light distribution files



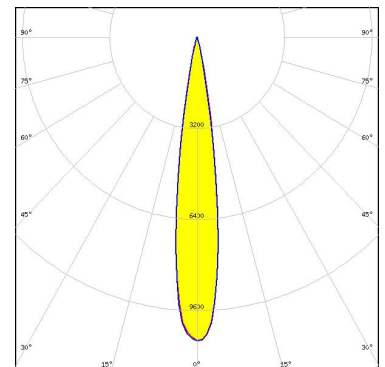
LED Z8Y22P
 FWHM / FWTM 8.0° / 14.0°
 Efficiency 87 %
 Peak intensity 38.7 cd/m
 LEDs/each optic 1
 Light colour/type White
 Required components:



Light distribution files



LED Z8Y50P
 FWHM / FWTM 15.5° / 26.1°
 Efficiency 94 %
 Peak intensity 10.7 cd/m
 LEDs/each optic 1
 Light colour/type White
 Required components:



Light distribution files

GENERAL INFORMATION:

NOTE: The typical beam angle will be changed by different color, chip size and chip position tolerance. The typical total beam angle is the full angle measured where the luminous intensity is half of the peak value.

MATERIALS:

As part of our continuous research and improvement processes, and to ensure the best possible quality and availability of our products, LEDiL reserves the right to change material grades without notice.

PRODUCT DATA USER AGREEMENT AND DISCLAIMER:

The measured data in the provided downloadable LEDiL Product Datasheets and Mechanical 2D-Drawings is rounded and provided as reference for planning. LEDiL Oy's optical specifications have been verified by conducting performance testing of the products in accordance with the company's quality system. The reported data are averaged results of multiple measurements with typical variation. LEDiL Oy reserves the right to without prior notification make changes and improvements to its products.

LEDiL Oy assumes neither warranty, nor guarantee nor any other liability of any kind for the contents and correctness of the provided data. The provided data has been generated with highest diligence but the provided data may in reality not represent the complete possible variation range of all intrinsic parameters. Therefore, in certain cases a deviation from the provided data could occur.

LEDiL Oy reserves the right to undertake technical changes of its products without further notification which could lead to changes in the provided data. LEDiL Oy assumes no liability of any kind for the possible deviation from any provided data or any other damage resulting from the usage of the provided data.

The user agrees to this disclaimer and user agreement with the download or usage of the provided files.

LEDiL Oy

Joensuunkatu 13
FI-24240 SALO
Finland

LEDiL Inc.

228 West Page Street
Suite D
Sycamore IL 60178
USA

Ledil Optics Technology (Shenzhen) Co., Ltd.

405 , Block B
Casic Motor Building
Shenzhen 518057
P.R.CHINA

Local sales and technical support

[www.ledil.com/
where_to_buy](http://www.ledil.com/where_to_buy)

Shipping locations

Poznan, Poland
Hong Kong, China

Distribution Partners

[www.ledil.com/
where_to_buy](http://www.ledil.com/where_to_buy)