



**3.3V DUAL DIFFERENTIAL  
LVPECL-to-LVTTL TRANSLATOR**

**Precision Edge®  
SY89223L**

**FEATURES**

- $f_{MAX} > 160\text{MHz}$
- $3.3\text{V} \pm 10\%$  power supply
- $< 2.5\text{ns}$  propagation delay
- $< 300\text{ps}$  within-device skew
- Differential LVPECL inputs
- 24mA LVTTL outputs
- Industrial temperature range:  $-40^{\circ}\text{C}$  to  $+85^{\circ}\text{C}$
- Available in an ultra-small 8-pin (2mm x 2mm) MLF™ package



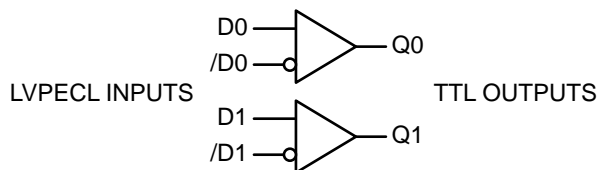
**Precision Edge®**

**DESCRIPTION**

The SY89223L is a 3.3V, precision dual differential LVPECL-to-LVTTL translator. The ultra-small 8-pin MLF package and the low skew, dual gate design of this translator makes it ideal for applications which require the translation of a clock and a data signal.

The SY89223L translator accepts 10k or 100k differential LVPECL inputs.

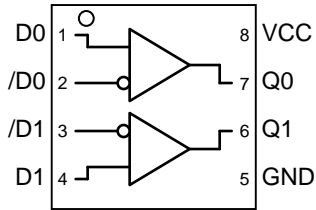
**BLOCK DIAGRAM**



**FUNCTIONAL CROSS REFERENCE**

Micrel Part Number	Functional Cross
SY89223L	10/100ELT23

**PACKAGE/ORDERING INFORMATION**



**8-Pin MLF™  
Ultra-Small Outline**

**Ordering Information<sup>(1)</sup>**

Part Number	Package Type	Operating Range	Package Marking	Lead Finish
SY89223LMITR <sup>(2)</sup>	MLF-8	Industrial	223	Sn-P
SY89223LMGTR <sup>(2)</sup>	MLF-8	Industrial	223 with Pb-Free bar-line indicator	Pb-Free NiPdAu

**Notes:**

1. Contact factory for die availability. Dice are guaranteed at T<sub>A</sub> = 25°C, DC electricals only.
2. Tape and Reel.

**PIN DESCRIPTION**

Pin Number	Pin Name	Type	Pin Function
1, 2, 3, 4	D0, /D0 D1, /D1	10k/100k PECL Input	Differential LVPECL Input: Channels 0 and 1 inputs are applied to these LVPECL compatible inputs. See <i>"Input Interface Applications"</i> section for single-ended inputs.
7, 6	Q0, Q1	LVTTL Output	Single-ended Output: LVTTL outputs.
8	VCC	VCC Power	Positive Power Supply: Bypass with 0.1µF//0.01µF low ESR capacitors.
5	GND, Exposed Pad	Ground	Ground and exposed pad must be tied to ground plane.

### Absolute Maximum Ratings<sup>(Note 1)</sup>

Power Supply Voltage ( $V_{CC}$ ) ..... -0.5V to 4.0V  
 PECL Input Voltage ( $V_{IN}$ ) ..... +0V to  $V_{CC} + 0.5V$   
 Voltage Applied to Output at HIGH State  
 ( $V_{OUT}$ ) ..... -0.5V to  $V_{CC}$   
 Current Applied to Output at LOW State  
 ( $I_{OUT}$ ) ..... Twice the Rated  $I_{OL}$  mA  
 Lead Temperature (soldering, 20 sec.) ..... 260°C  
 Storage Temperature ( $T_S$ ) ..... -65°C to +150°C

### Operating Ratings<sup>(Note 2)</sup>

Power Supply Voltage ( $V_{CC}$ ) ..... +3.0V to +3.6V  
 Ambient Temperature ( $T_A$ ) ..... -40°C to +85°C  
 Package Thermal Resistance,<sup>(Note 3)</sup>  
 MLF™ ( $\theta_{JA}$ )  
 Still-Air ..... 93°C/W  
 500lfpm ..... 87°C/W  
 MLF™ ( $\psi_{JB}$ ), ..... 56°C/W

## LV TTL DC ELECTRICAL CHARACTERISTICS

$V_{CC} = 3.3V \pm 10\%$ ; GND = 0V,  $T_A = -40^\circ C$  to  $+85^\circ C$ ; unless otherwise noted.

Symbol	Parameter	Condition	Min	Typ	Max	Units
$V_{OH}$	Output HIGH Voltage	$I_{OH} = -3.0mA$	2.0			V
$V_{OL}$	Output LOW Voltage	$I_{OL} = 24mA$			0.5	V
$I_{CC}$	Power Supply Current				30	mA
$I_{OS}$	Output Short Circuit Current	$V_{OUT} = 0V$	-80		-240	mA

## LV PECL DC ELECTRICAL CHARACTERISTICS

$V_{CC} = 3.3V \pm 10\%$ ; GND = 0V,  $T_A = -40^\circ C$  to  $+85^\circ C$ ; unless otherwise noted.

Symbol	Parameter	Condition	Min	Typ	Max	Units
$V_{IH}$	Input HIGH Voltage		$V_{CC} - 1.165$	—	$V_{CC} - 0.880$	V
$V_{IL}$	Input LOW Voltage		$V_{CC} - 1.810$	—	$V_{CC} - 1.475$	V
$V_{IHCMR}$	Input HIGH Common Mode Range	<b>Note 4</b>	1.2	—	$V_{CC}$	V
$V_{PP}$	Minimum Input Swing		200	—	—	mV
$I_{IH}$	Input HIGH Current		—	—	150	$\mu A$
$I_{IL}$	Input LOW Current		0.5	—	—	$\mu A$

**Note 1.** Permanent device damage may occur if ABSOLUTE MAXIMUM RATINGS are exceeded. This is a stress rating only and functional operation is not implied at conditions other than those detailed in the operational sections of this data sheet. Exposure to ABSOLUTE MAXIMUM RATING conditions for extended periods may affect device reliability.

**Note 2.** The data sheet limits are not guaranteed if the device is operated beyond the operating ratings.

**Note 3.** Package thermal resistance assumes exposed pad is soldered (or equivalent) to the device's most negative potential on the PCB.

**Note 4.**  $V_{IHCMR}(\min)$  varies 1:1 with  $V_{EE}$ ; Max varies 1:1 with  $V_{CC}$ .

## AC ELECTRICAL CHARACTERISTICS

$V_{CC} = 3.3V \pm 10\%$ ;  $GND = 0V$ ,  $T_A = -40^\circ C$  to  $+85^\circ C$ ;  $C_L = 20pF$  unless otherwise noted.

Symbol	Parameter	Condition	Min	Typ	Max	Units
$f_{MAX}$	Maximum Input Frequency	<b>Note 5</b>	160			MHz
$t_{pd}$	Propagation Delay		1.5		2.5	ns
$t_{SKEW++}$	Within-Device Skew	<b>Notes 6, 8</b>			0.3	ns
$t_{SKEW--}$	Within-Device Skew	<b>Notes 7, 8</b>			0.3	ns
$t_{SKPP}$	Part-to-Part Skew	<b>Notes 8, 9</b>			0.5	ns
$t_r, t_f$	Output Rise/Fall Times (1.0V to 2.0V)		0.5		1.0	ns

**Note 5.** Frequency at which output levels will meet a 0.8V to 2.0V minimum swing.

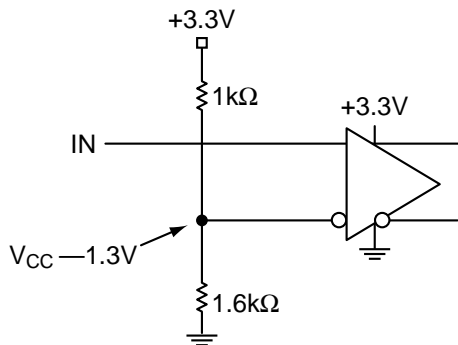
**Note 6.** Within-Device Skew considering HIGH-to-HIGH transitions at common  $V_{CC}$  level.

**Note 7.** Within-Device Skew considering LOW-to-LOW transitions at common  $V_{CC}$  level.

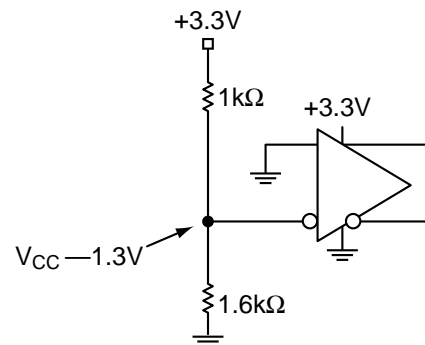
**Note 8.** All skew parameters are guaranteed but not tested.

**Note 9.** Device-to-Device Skew considering HIGH-to-HIGH transitions at common  $V_{CC}$  level.

## INPUT INTERFACE APPLICATIONS



**Figure 1a. Single-Ended Input  
(Terminating Unused Input)**

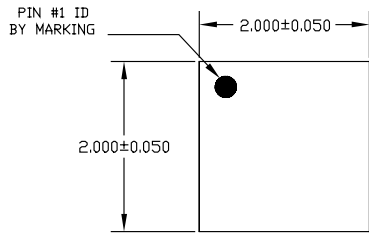


**Figure 1b. Terminating Inputs  
of Unused Gate**

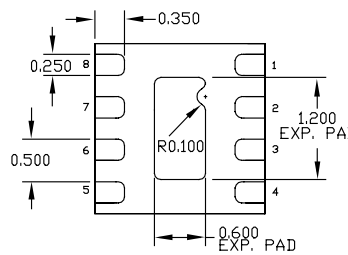
## RELATED PRODUCT AND SUPPORT DOCUMENTATION

Part Number	Function	Data Sheet Link
SY89206/216V	3.3V/5V 1GHz Differential PECL/ECL Receiver/Buffer	<a href="http://www.micrel.com/product-info/products/sy89206-216v.shtml">www.micrel.com/product-info/products/sy89206-216v.shtml</a>
SY89306/316V	3.3V/5V 2.5GHz PECL/ECL Differential Receiver/Buffer	<a href="http://www.micrel.com/product-info/products/sy89306-316v.shtml">www.micrel.com/product-info/products/sy89306-316v.shtml</a>
HBW Solutions	New Products and Applications	<a href="http://www.micrel.com/product-info/products/solutions.shtml">www.micrel.com/product-info/products/solutions.shtml</a>

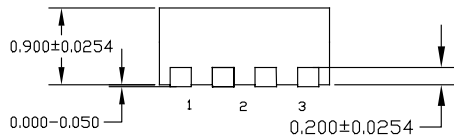
**8 LEAD ULTRA-SMALL EPAD-MicroLeadFrame™ (MLF-8)**



TOP VIEW

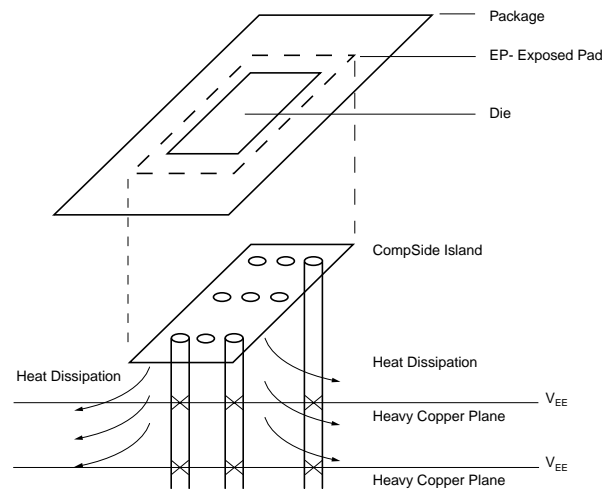


BOTTOM VIEW



SIDE VIEW

- NOTE:
1. ALL DIMENSIONS ARE IN MILLIMETERS.
  2. MAX. PACKAGE WARPAGE IS 0.05 mm.
  3. MAXIMUM ALLOWABLE BURRS IS 0.076 mm IN ALL DIRECTIONS.
  4. PIN #1 ID ON TOP WILL BE LASER/INK MARKED.



**PCB Thermal Consideration for 8-Pin MLF™ Package  
(Always solder, or equivalent, the exposed pad to the PCB)**

**Package Notes:**

- Note 1.** Package meets level two qualification.
- Note 2.** All parts are dry-packaged before shipment.
- Note 3.** Exposed pads must be soldered to a ground plane, of the same potential as the device GND pin, for proper thermal management.

**MICREL, INC. 2180 FORTUNE DRIVE SAN JOSE, CA 95131 USA**

TEL + 1 (408) 944-0800 FAX + 1 (408) 474-1000 WEB <http://www.micrel.com>

The information furnished by Micrel in this datasheet is believed to be accurate and reliable. However, no responsibility is assumed by Micrel for its use. Micrel reserves the right to change circuitry and specifications at any time without notification to the customer.

Micrel Products are not designed or authorized for use as components in life support appliances, devices or systems where malfunction of a product can reasonably be expected to result in personal injury. Life support devices or systems are devices or systems that (a) are intended for surgical implant into the body or (b) support or sustain life, and whose failure to perform can be reasonably expected to result in a significant injury to the user. A Purchaser's use or sale of Micrel Products for use in life support appliances, devices or systems is at Purchaser's own risk and Purchaser agrees to fully indemnify Micrel for any damages resulting from such use or sale.

© 2005 Micrel, Incorporated.