

TUSB213 USB 2.0 High Speed Signal Conditioner

1 Features

- Compatible with USB 2.0, OTG 2.0 and BC 1.2
- Pin strap or I²C Configurable
- Support for LS, FS, HS signaling
- Ultra-low USB Disconnect and Shutdown Power Consumption
- Scalable solution - Daisy Chain Device for High Loss Applications
- D1P/M and D2P/M Interchangeable and Host/Device Agnostic
- Supports up to 5m pre-channel or 2m post-channel Cable Length
 - Four Selectable AC Boost Setting Via External Pulldown Resistor
 - DC Boost Along With AC Boost for Best Signal Integrity

2 Applications

- Notebooks
- Desktops
- Docking Stations
- Tablets
- Cell Phones
- Active Cable, Cable Extenders
- Backplane
- Televisions

3 Description

The TUSB213 is a USB High-Speed (HS) signal conditioner, designed to compensate for ISI signal loss in a transmission channel which helps passing USB electrical compliance tests.

TUSB213 has a patent-pending design which is agnostic to USB Low Speed (LS) and Full Speed (FS) signals. LS and FS signal characteristics are unaffected by the TUSB213 while HS signals are compensated.

Programmable signal AC boost and DC boost permits fine tuning device performance to optimize High Speed signals at the connector, this allows use in many different applications.

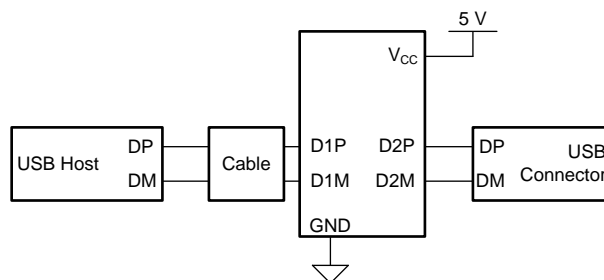
In addition, TUSB213 is compatible with the USB On-The-Go (OTG) and Battery Charging (BC) protocols.

Device Information (1)

| PART NUMBER | PACKAGE | BODY SIZE (NOM) |
|-------------|-----------|-------------------|
| TUSB213 | VQFN (14) | 3.50 mm x 3.50 mm |
| TUSB213I | | |

(1) For all available packages, see the orderable addendum at the end of the datasheet.

Simplified Schematic



Copyright © 2017, Texas Instruments Incorporated



Table of Contents

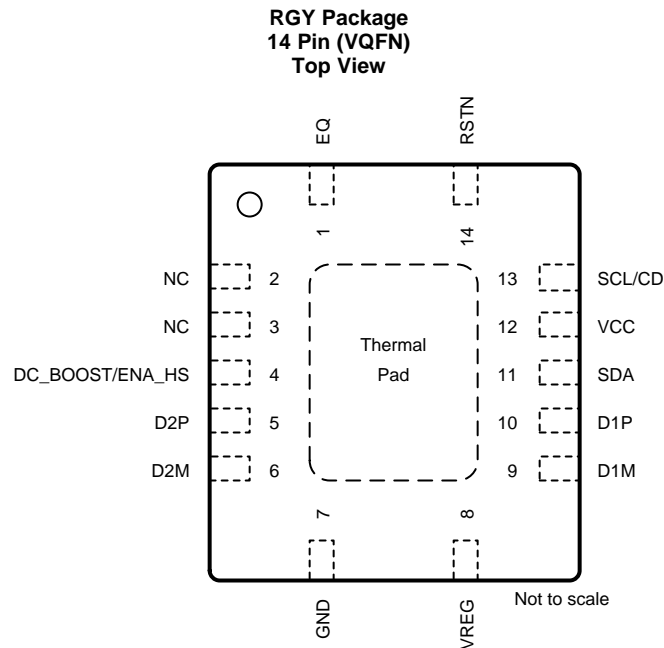
| | | | |
|--|----------|--|-----------|
| 1 Features | 1 | 7.3 Feature Description | 8 |
| 2 Applications | 1 | 7.4 Device Functional Modes | 8 |
| 3 Description | 1 | 8 Application and Implementation | 10 |
| 4 Revision History | 2 | 8.1 Application Information | 10 |
| 5 Pin Configuration and Functions | 3 | 8.2 Typical Application | 10 |
| 6 Specifications | 4 | 9 Power Supply Recommendations | 17 |
| 6.1 Absolute Maximum Ratings | 4 | 10 Layout | 18 |
| 6.2 ESD Ratings | 4 | 10.1 Layout Guidelines | 18 |
| 6.3 Recommended Operating Conditions | 4 | 10.2 Layout Example | 18 |
| 6.4 Thermal Information | 5 | 11 Device and Documentation Support | 19 |
| 6.5 Electrical Characteristics | 5 | 11.1 Receiving Notification of Documentation Updates | 19 |
| 6.6 Switching Characteristics | 6 | 11.2 Community Resources | 19 |
| 6.7 Typical Characteristics | 7 | 11.3 Trademarks | 19 |
| 7 Detailed Description | 8 | 11.4 Electrostatic Discharge Caution | 19 |
| 7.1 Overview | 8 | 11.5 Glossary | 19 |
| 7.2 Functional Block Diagram | 8 | 12 Mechanical, Packaging, and Orderable Information | 19 |

4 Revision History

| Changes from Revision A (August 2017) to Revision B | Page |
|---|-------------|
| • Changed Note From: Pull-up resistors for SDA and SCL pins in I ² C mode should be 2 kΩ (5%). To: Pull-up resistors for SDA and SCL pins in I ² C mode should be 4.7 kΩ (5%) in the <i>Pin Functions</i> table | 3 |
| • Added Test Conditions to RSTN: V _{IH} and V _{IL} in the <i>Electrical Characteristics</i> table | 5 |
| • Added new parameters to SCL/SDA: V _{IH} , V _{IL} , V _{SDA_OL} , I _{SDA_OL} the <i>Electrical Characteristics</i> table | 5 |
| • Added Test Conditions To: DC_BOOST: V _{IH} , V _{IM} , and V _{IL} the <i>Electrical Characteristics</i> table | 5 |
| • Added test conditions to t _{rise_dxx} and t _{fall_dxx} in the <i>Switching Characteristics</i> table | 6 |

| Changes from Original (August 2017) to Revision A | Page |
|--|-------------|
| • Changed C _{IO_DXX} TYP value From: 7 pF To: 2.7 pF in the <i>Electrical Characteristics</i> table | 6 |

5 Pin Configuration and Functions



Pin Functions

| PIN | | I/O | INTERNAL PULLUP/PULLDOWN | DESCRIPTION |
|------------------------------------|------|-----|----------------------------------|--|
| NAME | NO. | | | |
| EQ | 1 | I | N/A | USB High Speed AC boost select via external pull down resistor. Sampled upon de-assertion of RSTN. Does not recognize real time adjustments. See application section for details. Auto selects maximum AC boost level when left floating. |
| NC | 2, 3 | N/A | N/A | Leave unconnected. |
| DC_BOOST ⁽¹⁾ /ENA_HS | 4 | I/O | | In I2C mode: Reserved for TI test purpose. In non-I2C mode: At reset: 3-level input signal DC_BOOST. USB High Speed DC signal boost selection. H (pin is pulled high) – 80 mV M (pin is left floating) – 60 mV L (pin is pulled low) – 40 mV After reset: Output signal ENA_HS. Flag indicating that channel is in High Speed mode. Asserted upon: 1. Detection of USB-IF High Speed test fixture from an unconnected state followed by transmission of USB TEST_PACKET pattern. 2. Squelch detection following USB reset with a successful HS handshake [HS handshake is declared to be successful after single chirp J chirp K pair where each chirp is within 18 μ s – 128 μ s]. |
| D2P | 5 | I/O | N/A | USB High Speed positive port. |
| D2M | 6 | I/O | N/A | USB High Speed negative port. |
| GND | 7 | PWR | N/A | Ground |
| VREG | 8 | O | N/A | 1.8-V LDO output. Only enabled when operating in High Speed mode. Requires 0.1- μ F external capacitor to GND to stabilize the core. |
| D1M | 9 | I/O | N/A | USB High Speed negative port.. |
| D1P | 10 | I/O | N/A | USB High Speed positive port. |
| SDA ⁽²⁾ | 11 | I/O | RSTN asserted: 500 k Ω PD | I2C Mode: Bidirectional I2C data pin [I2C address = 0x2C]. In non I2C mode: Reserved for TI test purpose. |

(1) Pull-down and pull-up (to 3.3 V) resistors for DC_BOOST pins must be between 22 k Ω to 47 k Ω in non I²C mode.

(2) Pull-up resistors for SDA and SCL pins in I²C mode should be 4.7 k Ω (5%). If both SDA and SCL are pulled up at reset the device enters into I²C mode.

Pin Functions (continued)

| PIN | | I/O | INTERNAL PULLUP/PULLDOWN | DESCRIPTION |
|------------------------|-----|-----|--------------------------|---|
| NAME | NO. | | | |
| VCC | 12 | PWR | N/A | Supply power |
| SCL ⁽²⁾ /CD | 13 | I/O | RSTN asserted: 500 kΩ PD | In I2C mode: I2C clock pin [I2C address = 0x2C]. Non I2C mode: After reset: Output CD. Flag indicating that a USB device is attached (connection detected). Asserted from an unconnected state upon detection of DP or DM pull-up resistor. De-asserted upon detection of disconnect. |
| RSTN | 14 | I | 500 kΩ PU | Device disable/enable. Low – Device is at reset and in shutdown, and High – Normal operation. Recommend 0.1-μF external capacitor to GND to ensure clean power on reset if not driven. If the pin is driven, it must be held low until the supply voltage for the device reaches within specifications. |

6 Specifications

6.1 Absolute Maximum Ratings

 over operating free-air temperature and voltage range (unless otherwise noted)⁽¹⁾

| | | MIN | MAX | UNIT |
|---------------------------|--|------|-----|------|
| Supply Voltage Range | VCC | -0.3 | 6 | V |
| Voltage Range on I/O pins | DxP, DxM, RSTN, EQ, SCL, SDA, DC_BOOST, VREG | -0.3 | 3.8 | V |
| T _{stg} | Storage temperature | -65 | 150 | °C |

- (1) Stresses beyond those listed under *Absolute Maximum Rating* may cause permanent damage to the device. These are stress ratings only, which do not imply functional operation of the device at these or any other conditions beyond those indicated under *Recommended Operating Condition*. Exposure to absolute-maximum-rated conditions for extended periods may affect device reliability.

6.2 ESD Ratings

| | | VALUE | UNIT |
|--------------------|-------------------------|--|-------|
| V _(ESD) | Electrostatic discharge | Human body model (HBM), per ANSI/ESDA/JEDEC JS-001, all pins ⁽¹⁾ | ±2000 |
| | | Charged device model (CDM), per JEDEC specification JESD22-C101, all pins ⁽²⁾ | ±500 |

- (1) JEDEC document JEP155 states that 500-V HBM allows safe manufacturing with a standard ESD control process.
 (2) JEDEC document JEP157 states that 250-V CDM allows safe manufacturing with a standard ESD control process.

6.3 Recommended Operating Conditions

over operating free-air temperature and voltage range (unless otherwise noted)

| | | MIN | NOM | MAX | UNIT |
|-----------------|----------------------|----------|-----|-----|------|
| V _{CC} | Supply voltage | 4.4 | 5 | 5.5 | V |
| T _A | Ambient temperature | TUSB213 | 0 | 70 | °C |
| | | TUSB213I | -40 | 85 | °C |
| T _J | Junction temperature | TUSB213 | 0 | 85 | °C |
| | | TUSB213I | -40 | 105 | °C |

6.4 Thermal Information

| THERMAL METRIC ⁽¹⁾ | | TUSB213 | |
|-------------------------------|--|------------|------|
| | | RGY (VQFN) | |
| | | 14 PINS | |
| | | | UNIT |
| R _{θJA} | Junction-to-ambient thermal resistance | 49.1 | °C/W |
| R _{θJC(top)} | Junction-to-case (top) thermal resistance | 52.8 | °C/W |
| R _{θJB} | Junction-to-board thermal resistance | 24.2 | °C/W |
| Ψ _{JT} | Junction-to-top characterization parameter | 2.2 | °C/W |
| Ψ _{JB} | Junction-to-board characterization parameter | 24.3 | °C/W |
| R _{θJC(bot)} | Junction-to-case (bottom) thermal resistance | 7 | °C/W |

(1) For more information about traditional and new thermal metrics, see the [Semiconductor and IC Package Thermal Metrics](#) application report.

6.5 Electrical Characteristics

over operating free-air temperature and voltage range (unless otherwise noted)

| PARAMETER | | TEST CONDITIONS | MIN | TYP | MAX | UNIT |
|-------------------------|---|--|-----|------|-----|------|
| POWER | | | | | | |
| I _{ACTIVE_HS} | High-speed active current | USB channel = HS mode; 480 Mbps traffic; V _{CC} = 5V; V _{CC} supply stable; DC Boost = 60 mV | | 18 | 30 | mA |
| I _{IDLE_HS} | High-speed idle current | USB channel = HS mode; no traffic; V _{CC} = 5V; V _{CC} supply stable; DC Boost = 60 mV | | 13 | 22 | mA |
| I _{SUSPEND_HS} | High-speed suspend current | USB channel = HS suspend mode; V _{CC} = 5V; V _{CC} supply stable | | 0.76 | 1.5 | mA |
| I _{FS_LS} | Full/Low speed current | USB channel = FS mode or LS mode; V _{CC} = 5V | | 0.77 | 1.5 | mA |
| I _{DISCONNECT} | Disconnect current | Host side application; No device attachment; V _{CC} = 5V | | 0.86 | 1.5 | mA |
| I _{RSTN} | Disable current | RSTN driven low; V _{CC} supply stable; V _{CC} = 5V | | 22 | 80 | μA |
| I _{LKG_FS} | Pin fail-safe leakage current for SDA, SCL, DC_BOOST, DxP/N, RSTN | V _{CC} = 0 V; Pin at 3.6 V | | | 40 | μA |
| RSTN | | | | | | |
| V _{IH} | High-level input voltage | V _{CC} = 4.4V | 2 | | 3.6 | V |
| V _{IL} | Low-level input voltage | V _{CC} = 5.5V | 0 | | 0.8 | V |
| I _{IH} | High-level input current | V _{IH} = 3.6 V | -4 | | 4 | μA |
| I _{IL} | Low-level input current | V _{IL} = 0 V | -11 | | 11 | μA |
| EQ | | | | | | |
| R _{EQ} | External pull-down resistor on EQ pin. | AC Boost Level 0 | | | 160 | Ω |
| | | AC Boost Level 1 | 1.4 | | 2 | kΩ |
| | | AC Boost Level 2 | 3.7 | | 3.9 | kΩ |
| | | AC Boost Level 3 | 6 | | | kΩ |
| CD, ENA_HS | | | | | | |
| V _{OH} | High-level output voltage | I _O = -50μA | 2.4 | | | V |
| V _{OL} | Low-level output voltage | I _O = 50μA | | | 0.4 | V |
| SCL, SDA | | | | | | |
| C _{I2CBUS} | I2C Bus capacitance | | 4 | | 150 | pF |
| V _{IH} | SDA and SCL input high level voltage | V _{CC} = 4.4V | 2 | | 3.6 | V |
| V _{IL} | SDA and SCL input Low level voltage | V _{CC} = 5.5V | | | 0.8 | V |
| V _{SDA_OL} | SDA low-level output voltage | 4.7kΩ pullup to 3.6V; V _{CC} = 4.4V | | | 0.4 | V |
| I _{SDA_OL} | SDA Low level output current | V _{CC} = 5.5V; I ² C pulled up to 3.6V | 1.1 | | | mA |

Electrical Characteristics (continued)

over operating free-air temperature and voltage range (unless otherwise noted)

| PARAMETER | | TEST CONDITIONS | MIN | TYP | MAX | UNIT |
|-----------------|--------------------------|---|-----|-----|-----|------|
| DC_BOOST | | | | | | |
| V_{IH} | High-level input voltage | $V_{CC} = 5V$ | 2.4 | | 3.6 | V |
| V_{IM} | Mid-level input voltage | $V_{CC} = 5V$ | | 1.6 | | V |
| V_{IL} | Low-level input voltage | $V_{CC} = 5V$ | 0 | | 0.4 | V |
| DxP, DxM | | | | | | |
| C_{IO_DXX} | Capacitance to GND | Measured with LCR meter and device powered down. 1 MHz sinusoid, 30 mVpp ripple | | 2.7 | | pF |

6.6 Switching Characteristics

over operating free-air temperature and voltage range (unless otherwise noted)

| PARAMETER | | TEST CONDITIONS | MIN | TYP | MAX | UNIT |
|--------------------------------------|--|--|-----|-----|--------|---------|
| F_{BR_DXX} | DxP/M Bit Rate | USB channel = HS mode; 480 Mbps traffic; VCC supply stable | | | 480.24 | Mbps |
| t_{RISE_DXX} | DxP/M rise time | 10% - 90%; $V_{CC} = 5.5V$; Max AC Gain; | 100 | | | ps |
| t_{FALL_DXX} | DxP/M fall time | 90% - 10%; $V_{CC} = 5.5V$; Max AC Gain; | 100 | | | ps |
| t_{RSTN_PU} LSE_WIDT H | Minimum width to detect a valid RSTN signal assert when the pin is actively driven | $V_{CC} = 4.4 V$; Refer to Figure 1 | 20 | | | μs |
| t_{STABLE} | VCC stable before RSTN de-assertion | Refer to Figure 1 | 100 | | | μs |
| t_{VCC_RAM} P | VCC ramp time | | 0.2 | | 100 | ms |

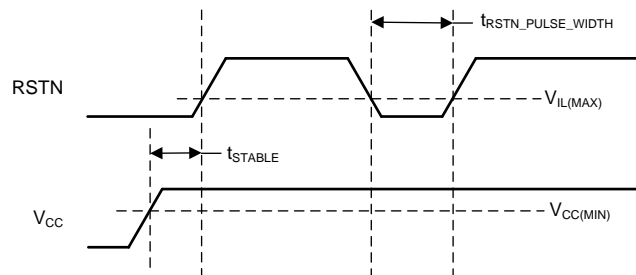


Figure 1. Power On and Reset Timing

6.7 Typical Characteristics

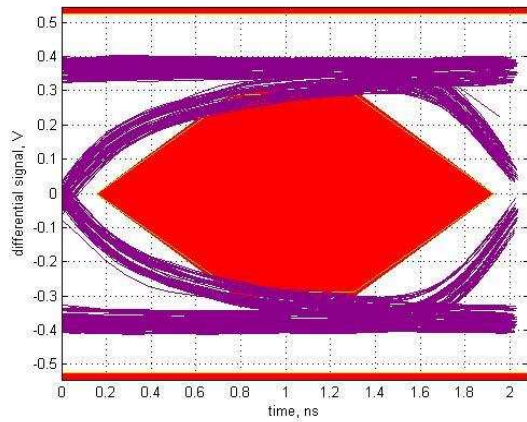


Figure 2. USB2.0 HS Eye diagram, Host far-end with 2m cable post-channel loss without TUSB213

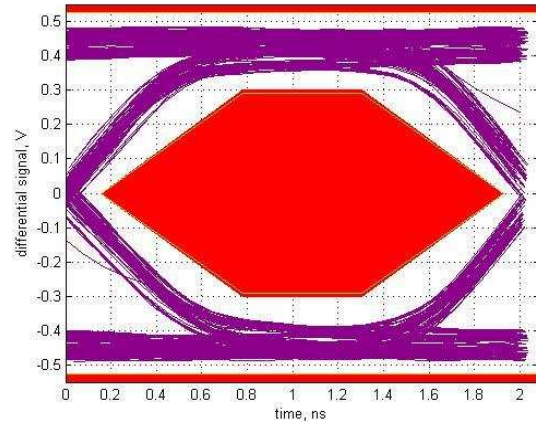


Figure 3. USB2.0 HS Eye diagram, Host far-end with 2m cable post-channel loss with TUSB213

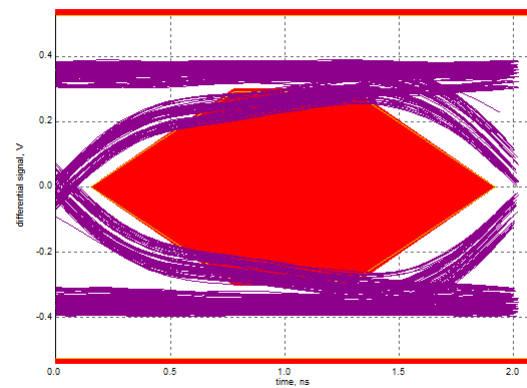


Figure 4. USB2.0 HS Eye diagram, Host far-end with 5m cable pre-channel loss without TUSB213

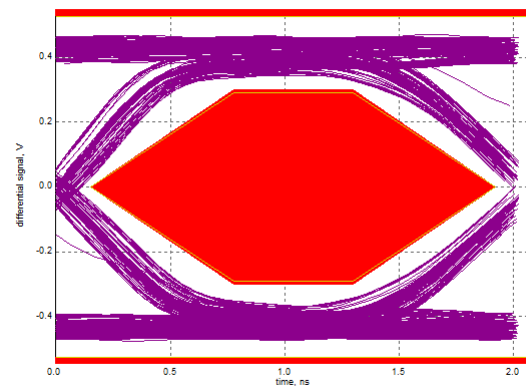


Figure 5. USB2.0 HS Eye diagram, Host far-end with 5m cable pre-channel loss with TUSB213

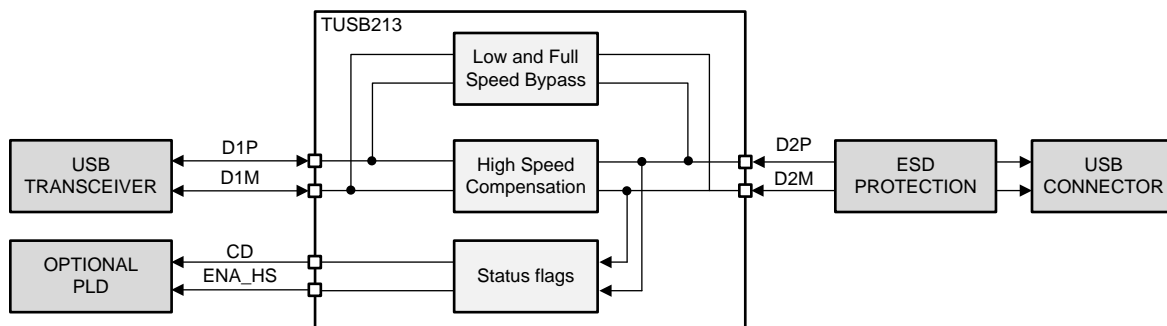
7 Detailed Description

7.1 Overview

The TUSB213 is a USB High-Speed (HS) signal conditioner, designed to compensate for ISI signal loss in a transmission channel. TUSB213 has a patent-pending design which is agnostic to USB Low Speed (LS) and Full Speed (FS) signals and does not alter their signal characteristics, while HS signals are compensated. In addition, the design is compatible with USB On-The-Go (OTG) and Battery Charging (BC) specifications.

Programmable signal AC boost through an external resistor on EQ pin permits fine tuning device performance to optimize signals helping to pass USB HS electrical compliance tests at the connector. Additional DC Boost configurable by three level input DC_BOOST pin helps overcoming the cable losses.

7.2 Functional Block Diagram



Copyright © 2017, Texas Instruments Incorporated

7.3 Feature Description

7.3.1 EQ

The EQ pin of the TUSB213 is used to configure the AC boost of the device. The four levels of AC boost are set through different values of an external pulldown resistor at this pin.

7.3.2 DC BOOST

The DC_BOOST pin of the TUSB213 is a tri-level pin, used to set the DC gain of the device according to [Table 1](#).

Table 1. DC Boost Settings

| DC BOOST SETTING VIA PIN STRAP | |
|--------------------------------|-----------------------|
| DC_BOOST | DC Boost Setting (mV) |
| V_{IL} | 40 |
| V_{IM} | 60 |
| V_{IH} | 80 |

7.4 Device Functional Modes

7.4.1 Low Speed (LS) Mode

TUSB213 automatically detects a LS connection and does not enable signal compensation. CD pin is asserted high.

7.4.2 Full Speed (FS) Mode

TUSB213 automatically detects a FS connection and does not enable signal compensation. CD pin is asserted high.

Device Functional Modes (continued)

7.4.3 High Speed (HS) Mode

TUSB213 automatically detects a HS connection and will enable signal compensation as determined by the configuration of the DC_BOOST pin and the external pulldown resistance on its EQ pin. CD pin asserted high.

7.4.4 Shutdown Mode

TUSB213 is disabled when its RSTN pin is asserted low. In shutdown mode, the USB channel is still fully operational but there is neither signal compensation nor any indication from the CD pin as to the status of the channel.

7.4.5 I²C Mode

TUSB213 support 100 kHz I²C for device configuration, status readback and test purposes. This controller is enabled after SCL and SDA pins are sampled high shortly after de-assertion of RSTN. In this mode, the register as described in [Table 2](#) can be accessed by I²C read/write transaction to 7-bit slave address 0x2C. It is necessary to set CFG_ACTIVE bit and reset it to zero after making changes to the EQ and DC Boost level registers to restart the state machine.

NOTE

All registers or fields in [Table 2](#) which are not specifically mentioned are considered reserved. The default value of these reserved registers or fields must not be changed. It is suggested to perform a read-modify-write operation to maintain the default value of the reserved fields.

Table 2. Register definition

| Offset | Bit(s) | Name | Type | Default | Description |
|--------|--------|------------|------|--|--|
| 0x01 | 6:4 | ACB_LVL | RW | XXX (Sampled from EQ pin at reset) | Sets the level of AC boost 000 : Level 0 AC boost programmed [MIN] 001 : Level 1 AC boost programmed 011 : Level 2 AC boost programmed 111 : Level 3 AC boost programmed [MAX] |
| 0x03 | 0 | CFG_ACTIVE | RW | 1b | Configuration mode 0 : Normal mode. State machine enabled. 1 : Configuration mode: State machine disabled. After reset, if I2C mode is true (SCL and SDA are both pulled high) it is maintained until it is cleared by an I2C write, but, if I2C mode is not true, it is cleared automatically. |
| 0x0E | 2:0 | DCB_LVL | RW | XXX (Sampled from DC_BOOST pin at reset) | Sets the level of DC Boost 011 : 40mV (DC_Boost = L) 101 : 60mV (DC_Boost = M, default) 111 : 80mV (DC_Boost = H) |

8 Application and Implementation

NOTE

Information in the following applications sections is not part of the TI component specification, and TI does not warrant its accuracy or completeness. TI's customers are responsible for determining suitability of components for their purposes. Customers should validate and test their design implementation to confirm system functionality.

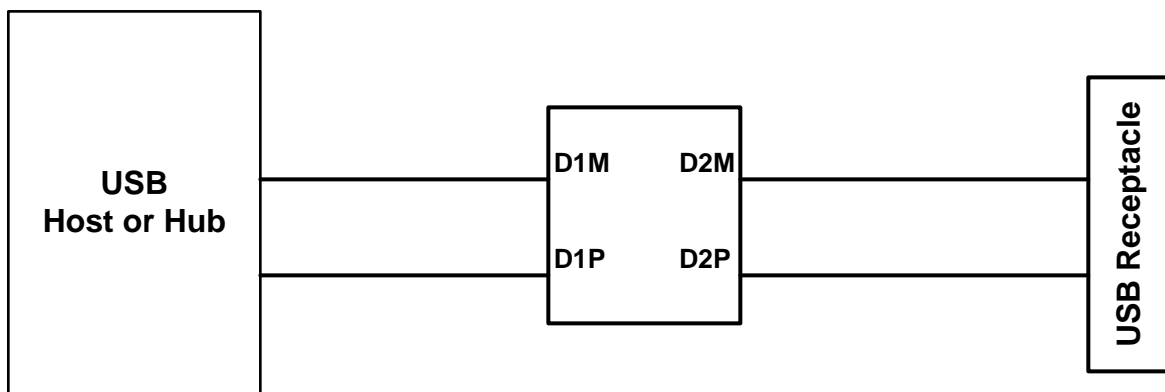
8.1 Application Information

The primary purpose of the TUSB213 is to re-store the signal integrity of a USB High Speed channel up to the USB connector. The loss in signal quality stems from reduced channel bandwidth due to high loss PCB trace and other components that contribute a capacitive load. This can cause the channel to fail the USB near end eye mask. Proper use of the TUSB213 can help to pass this eye mask. Additionally the DC Boost helps overcoming DC losses from cables and traces.

A secondary purpose is to use the CD pin of the TUSB213 to control other blocks on the customer platform if so desired.

8.2 Typical Application

A typical application is shown in [Figure 6](#). In this setup, D2P and D2M face the USB connector while D1P and D1M face the USB host or hub. If desired, the orientation may be reversed [that is, D2 faces transceiver and D1 faces connector].



Copyright © 2017, Texas Instruments Incorporated

Figure 6. Typical Application

Typical Application (continued)

8.2.1 Design Requirements

For this design example, use the parameters shown in the table below.

Table 3. Design Parameters

| PARAMETER | | | | VALUE |
|--|-------------------------------|----------------------|---------------------|---|
| V_{CC} (4.4 V to 5.5 V) | | | | 5 V |
| I ² C support required in system (Yes/No) | | | | No |
| AC Boost | | R_{EQ} | Level | AC Boost Level 2: $R_{EQ} = 3.83\text{ k}$ |
| | | 0- Ω | 0 | |
| | | 1.69 k \pm 1% | 1 | |
| | | 3.83 k \pm 1% | 2 | |
| | | DNI | 3 | |
| DC Boost | R_{DC1} | R_{DC2} | Level | Mid DC Level: $R_{DC1} = \text{DNI}$ $R_{DC2} = \text{DNI}$ |
| | 22 k Ω - 47 k Ω | Do Not Install (DNI) | 40 mV Low DC boost | |
| | DNI | DNI | 60 mV Mid DC boost | |
| | 47 k Ω | 24 k Ω | 80 mV High DC boost | |

8.2.2 Detailed Design Procedure

TUSB213 requires a valid reset signal as described in the power supply recommendations section. The capacitor at RSTN pin is not required if a microcontroller drives the RSTN pin according to recommendations.

VREG pin is the internal LDO output that requires a 0.1- μ F external capacitor to GND to stabilize the core.

The ideal AC boost setting is dependent upon the signal chain loss characteristics of the target platform. The general recommendation is to start with AC boost level 0, and then increment to AC boost level 1, etc. if permissible. Same applies to the DC Boost setting where it is recommended to plan for the required pads or connections to change boost settings, but to start with DC boost level 1.

In order for the TUSB213 to recognize any change to the AC and DC Boost settings, the RSTN pin must be toggled. This is because the configuration is latched on power up and the inputs are ignored thereafter.

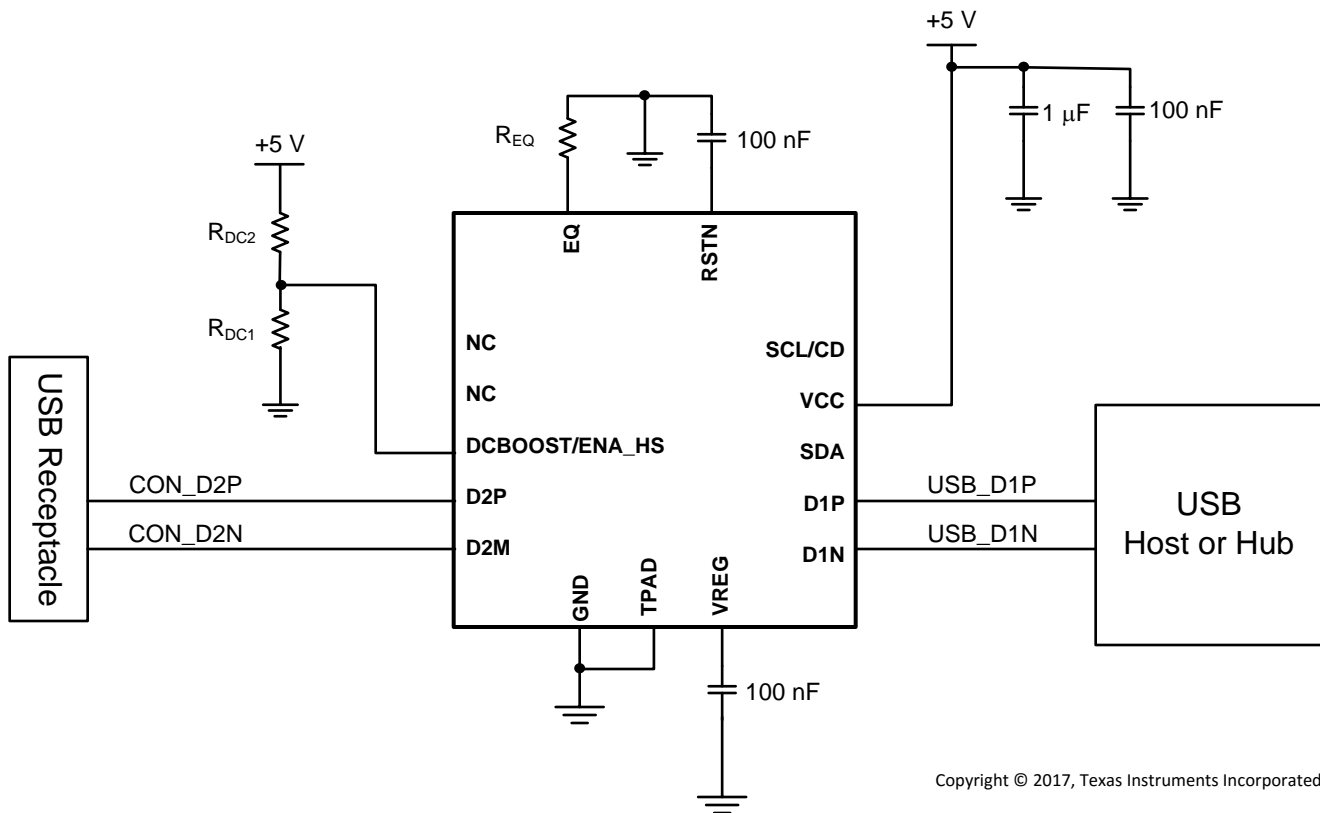
NOTE

The TUSB213 compensates for DC attenuation in the signal path according to the configuration of the DC_BOOST pin. This pin is not 5V tolerant and therefore when selecting the highest DC boost level, the voltage level at DC_BOOST pin must be less than 3.6V.

Placement of the device is also dependent on the application goal. [Table 4](#) summarizes our recommendations.

Table 4. Platform Placement Guideline

| PLATFORM GOAL | SUGGESTED DEVICE PLACEMENT |
|--|--------------------------------------|
| Pass USB Near End Mask | Close to measurement point |
| Pass USB Far End Eye Mask | Close to USB PHY |
| Cascade multiple devices to improve device enumeration | Midway between each USB interconnect |



Copyright © 2017, Texas Instruments Incorporated

Figure 7. Reference Schematic

8.2.2.1 Test Procedure to Construct USB High Speed Eye Diagram

NOTE

USB-IF certification tests for High Speed eye masks require the *mandated use* of the USB-IF developed test fixtures. These test fixtures do not require the use of oscilloscope probes. Instead they use SMA cables. More information can be found at the USB-IF Compliance Updates Page. It is located under the 'Electricals' section, ID 86 dated March 2013.

The following procedure must be followed before using any oscilloscope compliance software to construct a USB High Speed Eye Mask:

8.2.2.1.1 For a Host Side Application

1. Configure the TUSB213 to the desired AC and DC Boost settings
2. Power on (or toggle the RSTN pin if already powered on) the TUSB213
3. Using SMA cables, connect the oscilloscope and the USB-IF host-side test fixture to the TUSB213
4. Enable the host to transmit USB TEST_PACKET
5. Execute the oscilloscope USB compliance software.
6. Repeat the above steps in order to re-test TUSB213 with a different settings

8.2.2.1.2 For a Device Side Application

1. Configure the TUSB213 to the desired AC and DC Boost settings
2. Power on (or toggle the RSTN pin if already powered on) the TUSB213
3. Connect a USB host, the USB-IF device-side test fixture, and USB device to the TUSB213. Ensure that the USB-IF device test fixture is configured to the 'INIT' position
4. Allow the host to enumerate the device
5. Enable the device to transmit USB TEST_PACKET
6. Using SMA cables, connect the oscilloscope to the USB-IF device-side test fixture and ensure that the device-side test fixture is configured to the 'TEST' position.
7. Execute the oscilloscope USB compliance software.
8. Repeat the above steps in order to re-test TUSB213 with a different settings

8.2.3 Application Curves

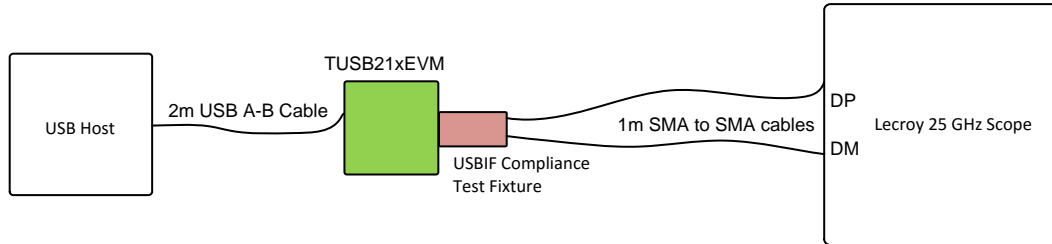


Figure 8. Eye Diagram Bench Setup

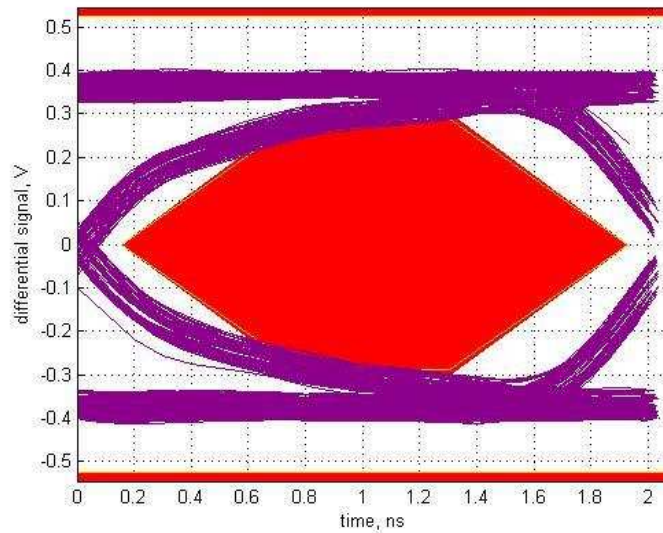


Figure 9. No TUSB213

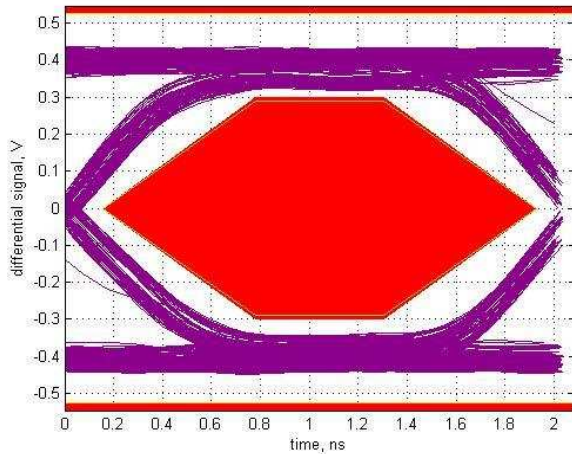


Figure 10. Low DC Boost, AC Boost Level 0

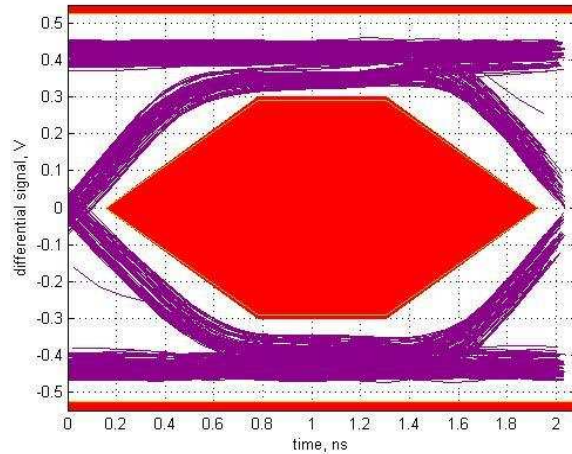


Figure 11. Mid DC Boost, AC Boost Level 0

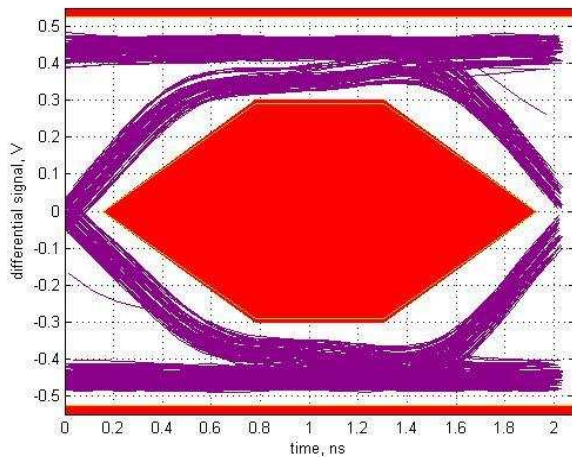


Figure 12. High DC Boost, AC Boost Level 0

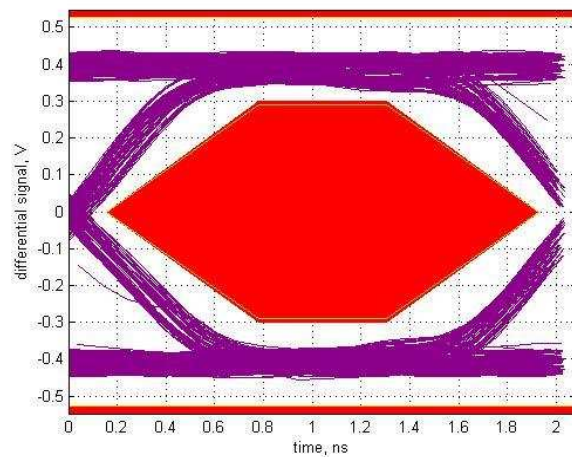


Figure 13. Low DC Boost, AC Boost Level 1

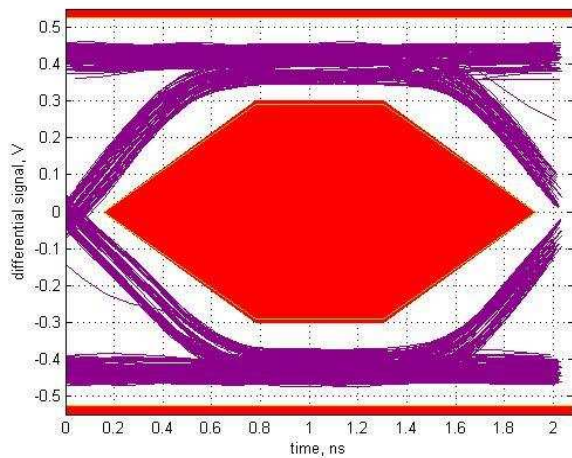


Figure 14. Mid DC Boost, AC Boost Level 1

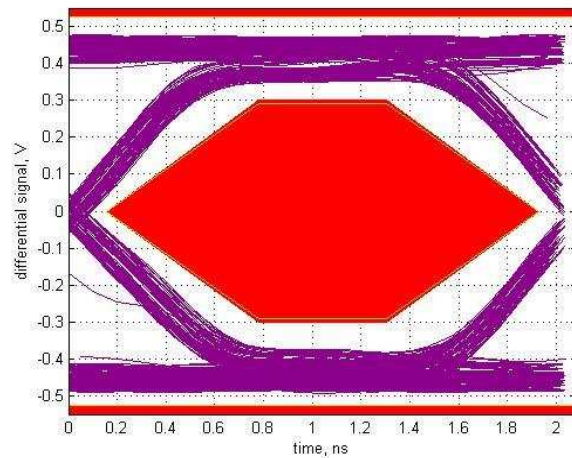


Figure 15. High DC Boost, AC Boost Level 1

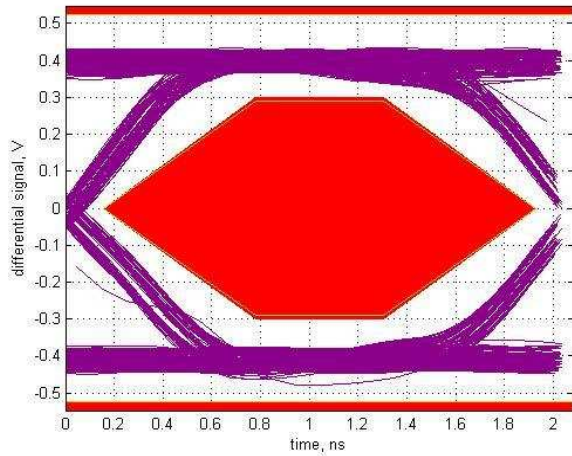


Figure 16. Low DC Boost, AC Boost Level 2

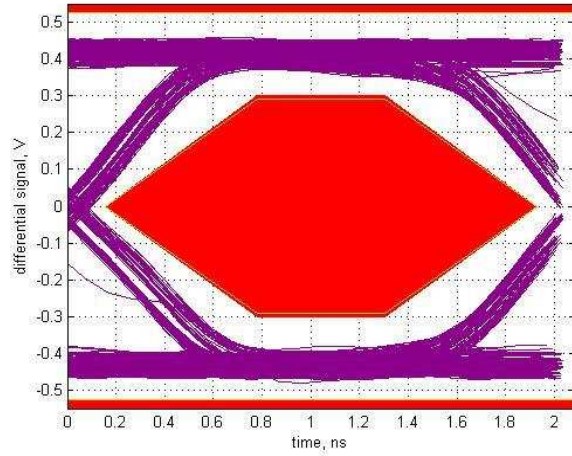


Figure 17. Mid DC Boost, AC Boost Level 2

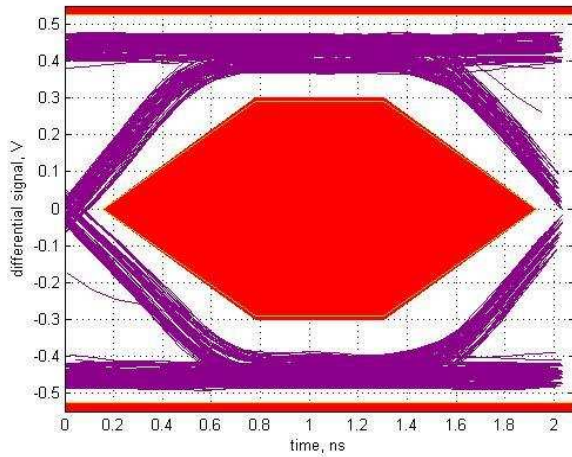


Figure 18. High DC Boost, AC Boost Level 2

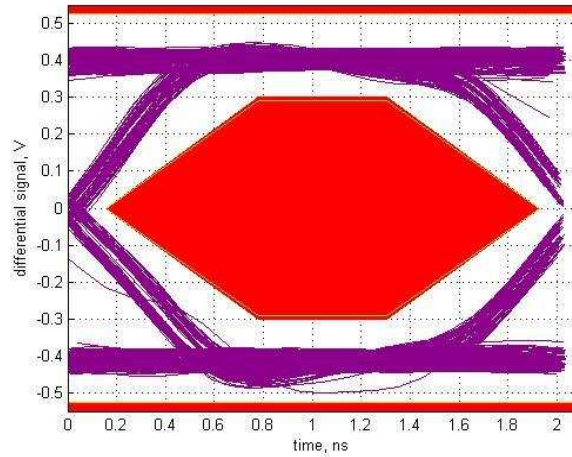


Figure 19. Low DC Boost, AC Boost Level 3

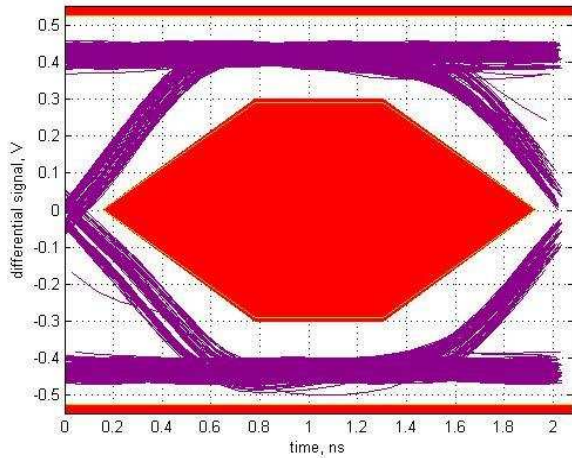


Figure 20. Mid DC Boost, AC Boost Level 3

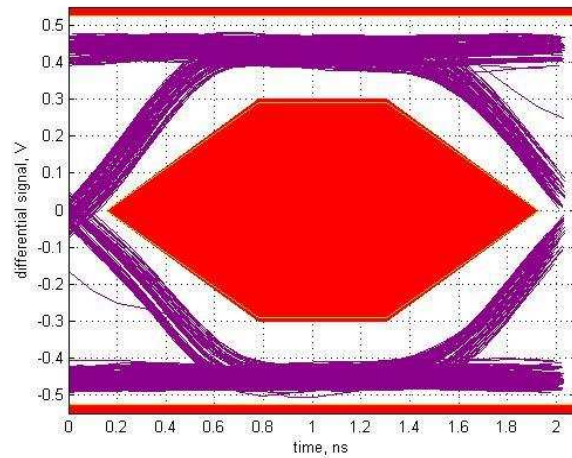


Figure 21. High DC Boost, AC Boost Level 3

9 Power Supply Recommendations

On power up, the interaction of the RSTN pin and power on ramp could result in digital circuits not being set correctly. The device should not be enabled until the power on ramp has settled to 4.4 V or higher to ensure a correct power on reset of the digital circuitry. If RSTN cannot be held low by microcontroller or other circuitry until the power on ramp has settled, then an external capacitor from the RSTN pin to GND is required to hold the device in the low power reset state.

The RC time constant should be larger than five times of the power on ramp time (0 to V_{CC}). With a typical internal pullup resistance of 500 k Ω , the recommended minimum external capacitance is calculated as:

$$C_{RSTN} = [\text{Ramp Time} \times 5] \div [500 \text{ k}\Omega] \quad (1)$$

10 Layout

10.1 Layout Guidelines

To avoid the need for signal vias, it is highly recommend to route the High Speed traces on the same surface layer than the TUSB213 is placed. shows an example how one could layout the PCB for TUSB213.

The layout should use impedance controlled traces to maintain $90\ \Omega$ differential impedance for the whole signal path as required per USB 2.0 specification. General guidelines for highspeed signal routing apply.

10.2 Layout Example

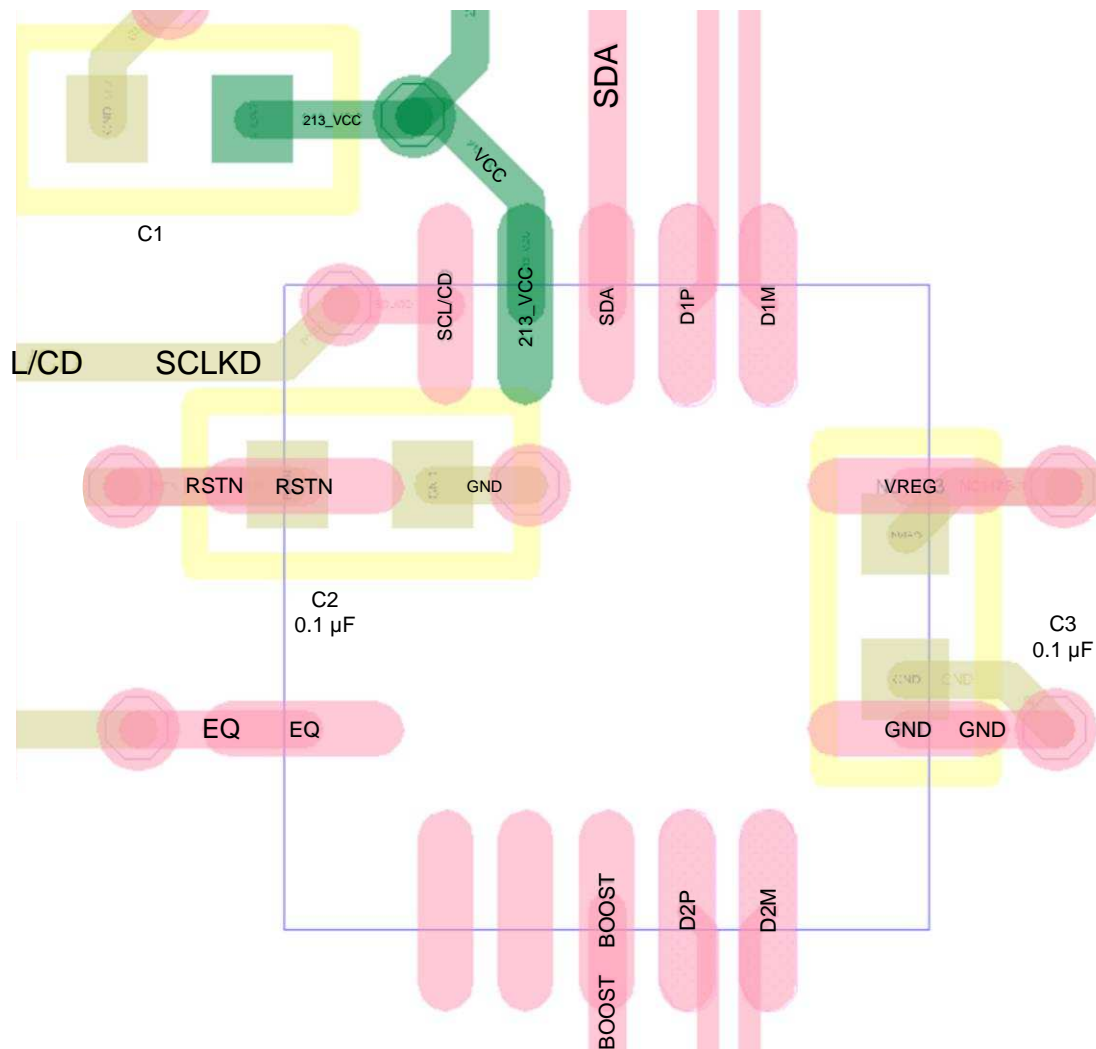


Figure 22. Layout Example

11 Device and Documentation Support

11.1 Receiving Notification of Documentation Updates

To receive notification of documentation updates, navigate to the device product folder on ti.com. In the upper right corner, click on *Alert me* to register and receive a weekly digest of any product information that has changed. For change details, review the revision history included in any revised document.

11.2 Community Resources

The following links connect to TI community resources. Linked contents are provided "AS IS" by the respective contributors. They do not constitute TI specifications and do not necessarily reflect TI's views; see TI's [Terms of Use](#).

TI E2E™ Online Community *TI's Engineer-to-Engineer (E2E) Community*. Created to foster collaboration among engineers. At e2e.ti.com, you can ask questions, share knowledge, explore ideas and help solve problems with fellow engineers.

Design Support *TI's Design Support* Quickly find helpful E2E forums along with design support tools and contact information for technical support.

11.3 Trademarks

E2E is a trademark of Texas Instruments.
All other trademarks are the property of their respective owners.

11.4 Electrostatic Discharge Caution



This integrated circuit can be damaged by ESD. Texas Instruments recommends that all integrated circuits be handled with appropriate precautions. Failure to observe proper handling and installation procedures can cause damage.

ESD damage can range from subtle performance degradation to complete device failure. Precision integrated circuits may be more susceptible to damage because very small parametric changes could cause the device not to meet its published specifications.

11.5 Glossary

[SLYZ022](#) — *TI Glossary*.

This glossary lists and explains terms, acronyms, and definitions.

12 Mechanical, Packaging, and Orderable Information

The following pages include mechanical, packaging, and orderable information. This information is the most current data available for the designated devices. This data is subject to change without notice and revision of this document. For browser-based versions of this data sheet, refer to the left-hand navigation.

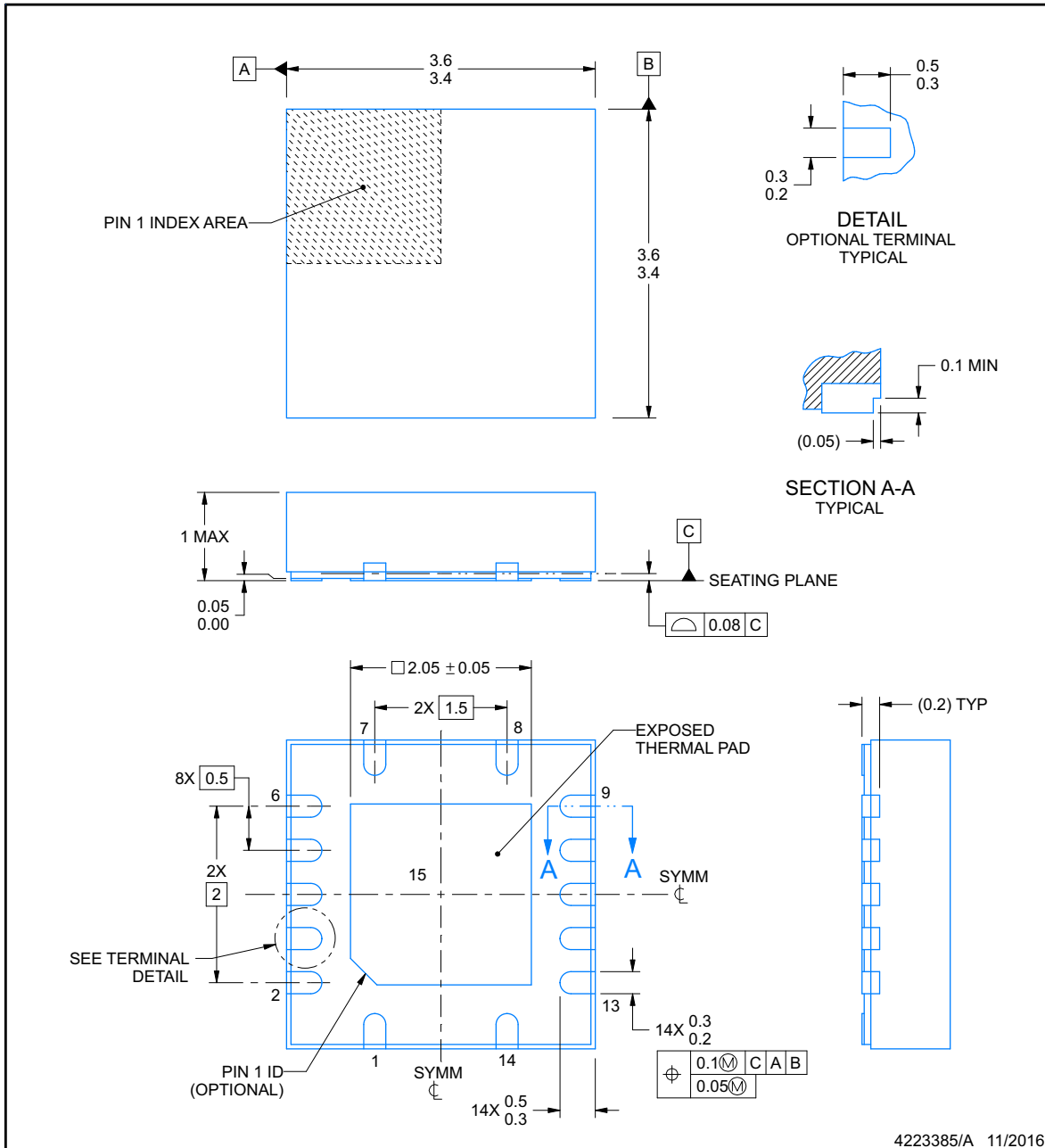


RGY0014B

PACKAGE OUTLINE

VQFN - 1 mm max height

PLASTIC QUAD FLATPACK - NO LEAD



4223385/A 11/2016

NOTES:

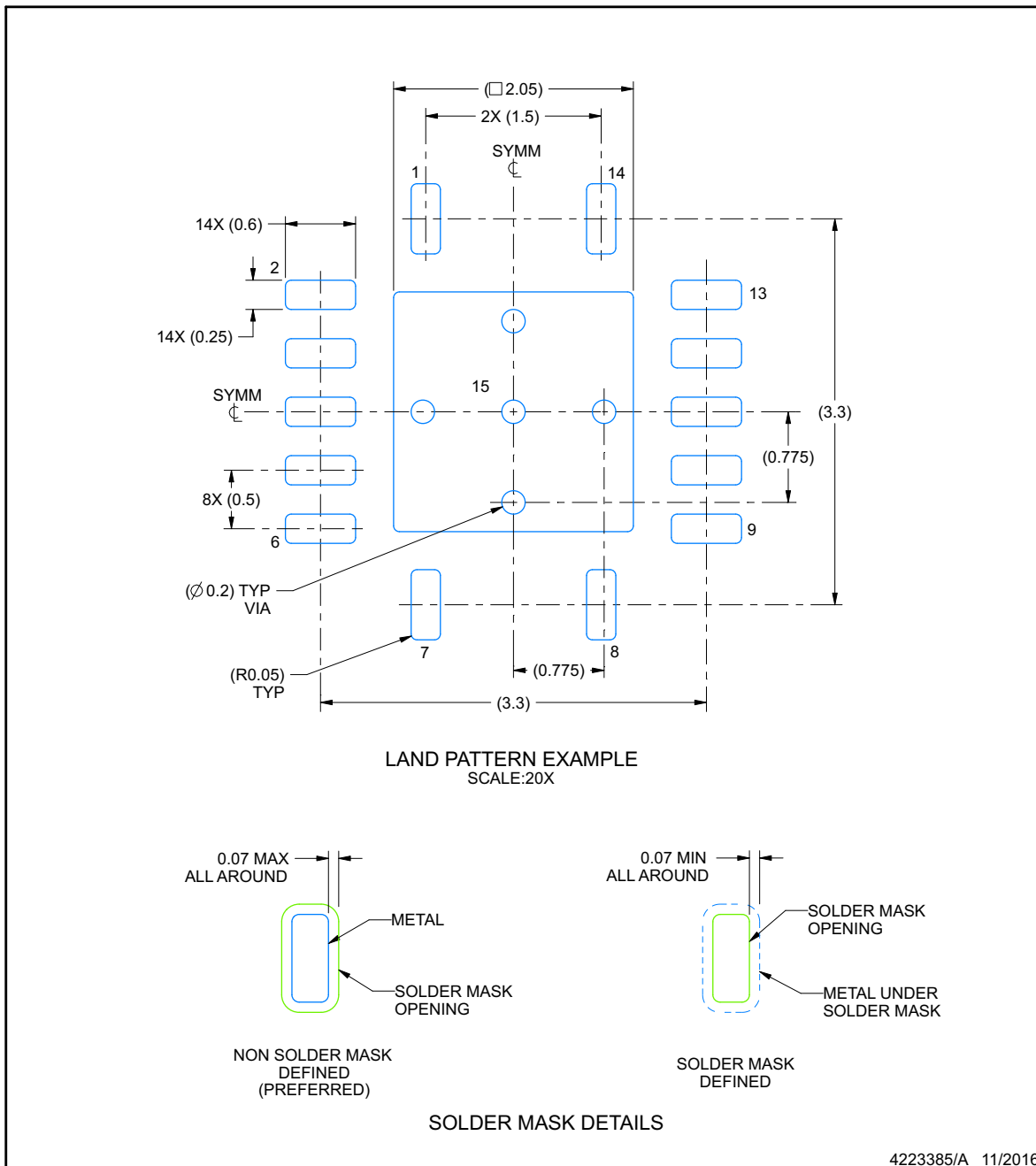
1. All linear dimensions are in millimeters. Any dimensions in parenthesis are for reference only. Dimensioning and tolerancing per ASME Y14.5M.
2. This drawing is subject to change without notice.
3. The package thermal pad must be soldered to the printed circuit board for thermal and mechanical performance.

EXAMPLE BOARD LAYOUT

RGY0014B

VQFN - 1 mm max height

PLASTIC QUAD FLATPACK - NO LEAD



NOTES: (continued)

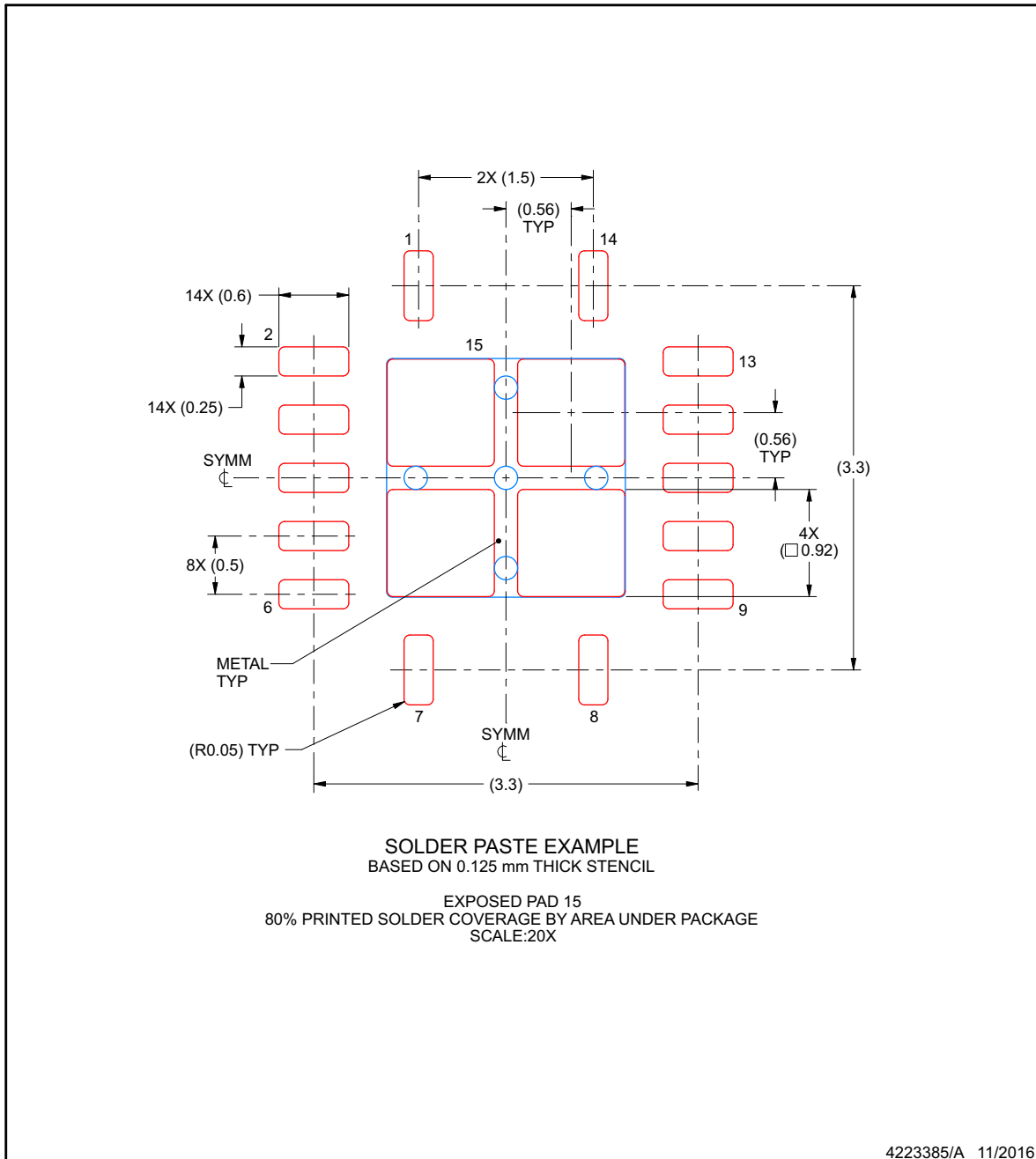
4. This package is designed to be soldered to a thermal pad on the board. For more information, see Texas Instruments literature number SLUA271 (www.ti.com/lit/slue271).
5. Vias are optional depending on application, refer to device data sheet. If any vias are implemented, refer to their locations shown on this view. It is recommended that vias under paste be filled, plugged or tented.

EXAMPLE STENCIL DESIGN

RGY0014B

VQFN - 1 mm max height

PLASTIC QUAD FLATPACK - NO LEAD



NOTES: (continued)

- 6. Laser cutting apertures with trapezoidal walls and rounded corners may offer better paste release. IPC-7525 may have alternate design recommendations.

PACKAGING INFORMATION

| Orderable Device | Status (1) | Package Type | Package Drawing | Pins | Package Qty | Eco Plan (2) | Lead finish/ Ball material (6) | MSL Peak Temp (3) | Op Temp (°C) | Device Marking (4/5) | Samples |
|------------------|---------------|--------------|-----------------|------|-------------|-----------------|--------------------------------------|----------------------|--------------|-------------------------|-------------------------|
| TUSB213IRGYR | ACTIVE | VQFN | RGY | 14 | 3000 | RoHS & Green | SN | Level-2-260C-1 YEAR | -40 to 85 | USB213 | Samples |
| TUSB213IRGYT | ACTIVE | VQFN | RGY | 14 | 250 | RoHS & Green | SN | Level-2-260C-1 YEAR | -40 to 85 | USB213 | Samples |
| TUSB213RGYR | ACTIVE | VQFN | RGY | 14 | 3000 | RoHS & Green | SN | Level-2-260C-1 YEAR | 0 to 70 | USB213 | Samples |
| TUSB213RGYT | ACTIVE | VQFN | RGY | 14 | 250 | RoHS & Green | SN | Level-2-260C-1 YEAR | 0 to 70 | USB213 | Samples |

(1) The marketing status values are defined as follows:

ACTIVE: Product device recommended for new designs.

LIFEBUY: TI has announced that the device will be discontinued, and a lifetime-buy period is in effect.

NRND: Not recommended for new designs. Device is in production to support existing customers, but TI does not recommend using this part in a new design.

PREVIEW: Device has been announced but is not in production. Samples may or may not be available.

OBSOLETE: TI has discontinued the production of the device.

(2) **RoHS:** TI defines "RoHS" to mean semiconductor products that are compliant with the current EU RoHS requirements for all 10 RoHS substances, including the requirement that RoHS substance do not exceed 0.1% by weight in homogeneous materials. Where designed to be soldered at high temperatures, "RoHS" products are suitable for use in specified lead-free processes. TI may reference these types of products as "Pb-Free".

RoHS Exempt: TI defines "RoHS Exempt" to mean products that contain lead but are compliant with EU RoHS pursuant to a specific EU RoHS exemption.

Green: TI defines "Green" to mean the content of Chlorine (Cl) and Bromine (Br) based flame retardants meet JS709B low halogen requirements of <=1000ppm threshold. Antimony trioxide based flame retardants must also meet the <=1000ppm threshold requirement.

(3) **MSL, Peak Temp.** - The Moisture Sensitivity Level rating according to the JEDEC industry standard classifications, and peak solder temperature.

(4) There may be additional marking, which relates to the logo, the lot trace code information, or the environmental category on the device.

(5) Multiple Device Markings will be inside parentheses. Only one Device Marking contained in parentheses and separated by a "-" will appear on a device. If a line is indented then it is a continuation of the previous line and the two combined represent the entire Device Marking for that device.

(6) **Lead finish/Ball material** - Orderable Devices may have multiple material finish options. Finish options are separated by a vertical ruled line. Lead finish/Ball material values may wrap to two lines if the finish value exceeds the maximum column width.

Important Information and Disclaimer: The information provided on this page represents TI's knowledge and belief as of the date that it is provided. TI bases its knowledge and belief on information provided by third parties, and makes no representation or warranty as to the accuracy of such information. Efforts are underway to better integrate information from third parties. TI has taken and

continues to take reasonable steps to provide representative and accurate information but may not have conducted destructive testing or chemical analysis on incoming materials and chemicals. TI and TI suppliers consider certain information to be proprietary, and thus CAS numbers and other limited information may not be available for release.

In no event shall TI's liability arising out of such information exceed the total purchase price of the TI part(s) at issue in this document sold by TI to Customer on an annual basis.

OTHER QUALIFIED VERSIONS OF TUSB213 :

- Automotive: [TUSB213-Q1](#)

NOTE: Qualified Version Definitions:

- Automotive - Q100 devices qualified for high-reliability automotive applications targeting zero defects

TAPE AND REEL INFORMATION



QUADRANT ASSIGNMENTS FOR PIN 1 ORIENTATION IN TAPE



*All dimensions are nominal

| Device | Package Type | Package Drawing | Pins | SPQ | Reel Diameter (mm) | Reel Width W1 (mm) | A0 (mm) | B0 (mm) | K0 (mm) | P1 (mm) | W (mm) | Pin1 Quadrant |
|--------------|--------------|-----------------|------|------|--------------------|--------------------|---------|---------|---------|---------|--------|---------------|
| TUSB213IRGYR | VQFN | RGY | 14 | 3000 | 330.0 | 12.4 | 3.75 | 3.75 | 1.15 | 8.0 | 12.0 | Q2 |
| TUSB213IRGYT | VQFN | RGY | 14 | 250 | 180.0 | 12.4 | 3.75 | 3.75 | 1.15 | 8.0 | 12.0 | Q2 |
| TUSB213RGYR | VQFN | RGY | 14 | 3000 | 330.0 | 12.4 | 3.75 | 3.75 | 1.15 | 8.0 | 12.0 | Q2 |
| TUSB213RGYT | VQFN | RGY | 14 | 250 | 180.0 | 12.4 | 3.75 | 3.75 | 1.15 | 8.0 | 12.0 | Q2 |

TAPE AND REEL BOX DIMENSIONS


*All dimensions are nominal

| Device | Package Type | Package Drawing | Pins | SPQ | Length (mm) | Width (mm) | Height (mm) |
|--------------|--------------|-----------------|------|------|-------------|------------|-------------|
| TUSB213IRGYR | VQFN | RGY | 14 | 3000 | 367.0 | 367.0 | 38.0 |
| TUSB213IRGYT | VQFN | RGY | 14 | 250 | 213.0 | 191.0 | 35.0 |
| TUSB213IRGYR | VQFN | RGY | 14 | 3000 | 367.0 | 367.0 | 38.0 |
| TUSB213IRGYT | VQFN | RGY | 14 | 250 | 213.0 | 191.0 | 35.0 |

IMPORTANT NOTICE AND DISCLAIMER

TI PROVIDES TECHNICAL AND RELIABILITY DATA (INCLUDING DATASHEETS), DESIGN RESOURCES (INCLUDING REFERENCE DESIGNS), APPLICATION OR OTHER DESIGN ADVICE, WEB TOOLS, SAFETY INFORMATION, AND OTHER RESOURCES "AS IS" AND WITH ALL FAULTS, AND DISCLAIMS ALL WARRANTIES, EXPRESS AND IMPLIED, INCLUDING WITHOUT LIMITATION ANY IMPLIED WARRANTIES OF MERCHANTABILITY, FITNESS FOR A PARTICULAR PURPOSE OR NON-INFRINGEMENT OF THIRD PARTY INTELLECTUAL PROPERTY RIGHTS.

These resources are intended for skilled developers designing with TI products. You are solely responsible for (1) selecting the appropriate TI products for your application, (2) designing, validating and testing your application, and (3) ensuring your application meets applicable standards, and any other safety, security, or other requirements. These resources are subject to change without notice. TI grants you permission to use these resources only for development of an application that uses the TI products described in the resource. Other reproduction and display of these resources is prohibited. No license is granted to any other TI intellectual property right or to any third party intellectual property right. TI disclaims responsibility for, and you will fully indemnify TI and its representatives against, any claims, damages, costs, losses, and liabilities arising out of your use of these resources.

TI's products are provided subject to TI's Terms of Sale (<https://www.ti.com/legal/termsofsale.html>) or other applicable terms available either on [ti.com](https://www.ti.com) or provided in conjunction with such TI products. TI's provision of these resources does not expand or otherwise alter TI's applicable warranties or warranty disclaimers for TI products.

Mailing Address: Texas Instruments, Post Office Box 655303, Dallas, Texas 75265
Copyright © 2021, Texas Instruments Incorporated