

PGA870EVM

This user's guide describes the characteristics, operation, and use of the PGA870EVM, an evaluation fixture for the [PGA870](#). The PGA870 is a wideband programmable gain amplifier (PGA) for high-speed signal chain and data acquisition systems. This evaluation module (EVM) allows evaluation of all aspects of the PGA870 device. Complete circuit descriptions, schematic diagrams, and bills of material are included in this document. For more information about the PGA870, see the [product data sheet](#) (available for download at www.ti.com).

Contents

1	Introduction	2
2	EVM Overview	2
3	PGA870EVM Control Panel Graphical User Interface (GUI)	5
4	GUI Software Installation and Use	5
5	Schematic and Parts List	8

List of Figures

1	Switch and Jumper Block Positions for Enabled Device, Gain = 20 dB, Unlatched Gain Mode	3
2	Jumper Block Positions for Device Gain, Latching, and Disable to be Controlled through DB25 Connector (J8).....	4
3	Switch and Jumper Block Positions for Device Gain (Unlatched Mode) Controlled through DB25 Connector and USB Interface Board	4
4	PGA870EVM Control Panel GUI After Installation, Before Successful Connection to PGA870EVM.....	5
5	PGA870EVM Control Panel GUI After Successful Connection to PGA870EVM	6
6	Examples of Control Panel GUI Connected to the PGA870EVM	7
7	PGA870EVM Schematic	8
8	Top Layer (Layer 1).....	9
9	Ground Layer (Layer 2)	9
10	Power Layer (Layer 3).....	9
11	Bottom Layer (Layer 4).....	9

1 Introduction

The PGA870 is a wideband PGA (available in a QFN-28 package) that has been optimized to provide high bandwidth, low distortion, and low noise, making it ideally suited as a 14-bit analog-to-digital converter (ADC) driver for wireless base station signal chain applications. The wide gain range of -11.5 dB to $+20$ dB can be adjusted in 0.5-dB gain steps through a 6-bit control word applied to the parallel interface.

The PGA870 evaluation fixture supports the feature and performance evaluations of the PGA870. The evaluation fixture has onboard switches for device power-up and power-down, gain setting, and gain latch modes. The PGA870EVM has SMA connectors for input and output signals and a DB25 connector to allow gain control via an external control source. Also included in the evaluation kit is an additional interface board that allows the user to control the PGA870 gain from an external USB interface, as well as graphical user interface (GUI) software that allows the user to remotely set the device gain. The PGA870 evaluation fixture requires a +5-V power supply.

Throughout this document, the acronym *EVM* and the phrases *evaluation module* and *evaluation fixture* are synonymous with the PGA870EVM.

1.1 PGA870EVM Kit Contents

The PGA870EVM kit contains:

- PGA870EVM printed circuit board (PCB)
- PGA870 USB Interface board
- USB interface cable
- CD with this document, the GUI software installer, and USB drivers

2 EVM Overview

The PGA870 evaluation fixture contains onboard switches (S3 to S9) to support manual gain selection as well as device power-up and power-down (S2). The EVM also has connectors (J3 to J8). Onboard jumper blocks (JP1 to JP10) allow selection of either the onboard switches or the connectors for off-board control. [Table 1](#) summarizes the switch numbers and corresponding device features. Note that switches S1 to S9 put the corresponding device pins into a *high* state when the switch actuator is positioned towards the center of the board.

Table 1. PGA870EVM Switch Number and Corresponding Device Feature/Function⁽¹⁾

EVM Switch	Device Function	Description	Jumper	EVM Connector
S1	Latch Mode	Controls latched and unlatched acquisition of the gain-control word (B0 to B5). See the device data sheet for additional information.	JP9	J8, Pin 9
S2	\overline{PD} (labeled <i>Disable</i> on EVM)	A low signal disables the device analog circuitry and shuts down the forward gain path. Gain control CMOS circuitry remains active when \overline{PD} is low, so the gain can be set when the device is disabled.	JP10	J8, Pin 17
S3	Gain Strobe (labeled <i>Clock</i> on EVM)	Latches gain control data (B0 to B5) depending on the Latch Mode state. See the device data sheet for additional information.	JP1 JP8	J3 (SMA)
S4	B5	Gain control word MSB. A low/high signal will decrease/increase the gain by 16 dB	JP2	J8, Pin 7
S5	B4	Gain control word bit 4. A low/high signal will decrease/increase the gain by 8 dB	JP3	J8, Pin 6
S6	B3	Gain control word bit 3. A low/high signal will decrease/increase the gain by 4 dB	JP4	J8, Pin 5
S7	B2	Gain control word bit 2. A low/high signal will decrease/increase the gain by 2 dB	JP5	J8, Pin 4
S8	B1	Gain control word bit 1. A low/high signal will decrease/increase the gain by 1 dB	JP6	J8, Pin 3

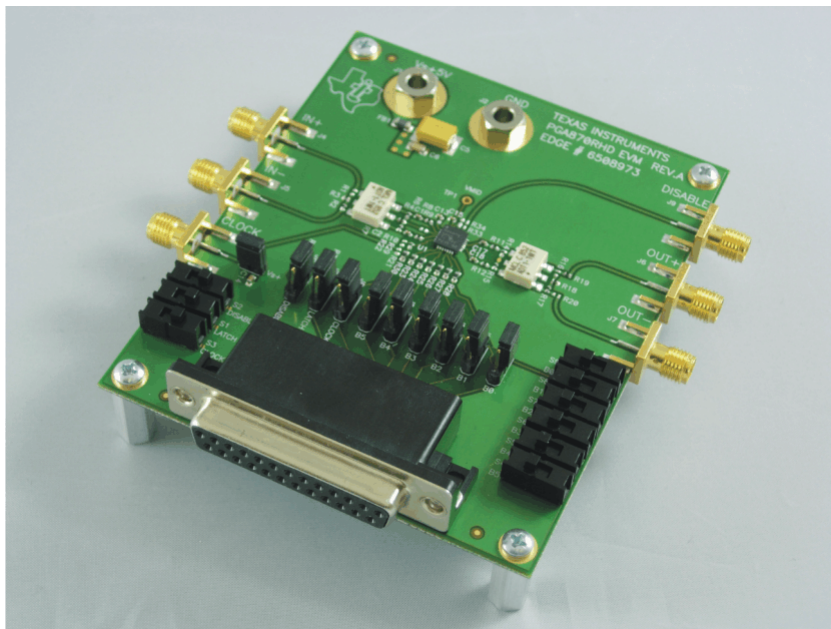
⁽¹⁾ Switches S1 to S9 give a high state to the corresponding device pins when the switch actuator is positioned towards the center of the board.

Table 1. PGA870EVM Switch Number and Corresponding Device Feature/Function⁽¹⁾ (continued)

EVM Switch	Device Function	Description	Jumper	EVM Connector
S9	B0	Gain control word LSB. A low/high signal will decrease/increase the gain by 0.5 dB	JP7	J8, Pin 2

Examples of various EVM jumper and switch settings are shown in [Figure 1](#) through [Figure 3](#).

- [Figure 1](#) illustrates the jumper (JP1–JP10) and switch settings for an *enabled* device, with gain = 20 dB set by the EVM switches (in *unlatched* gain mode). The jumper block positions (JP1–JP10) on the back side of the DB25 connector make all of the onboard switches active (S1–S9).
- [Figure 2](#) shows an example of the required jumper settings to allow all device functions to be controlled via the DB25 connector. The jumper block positions (JP1–JP10) on the back side of the DB25 connector make all of the onboard switches inactive (S1–S9).
- [Figure 3](#) shows the jumper and switch settings required for the device gain to be set from a USB port via the GUI software. The Latch Mode, \overline{PD} , and Gain Strobe functions are controlled by onboard switches S1, S2, and S3, respectively. The jumper block positions (JP1–JP10) on the back side of the DB25 connector make the gain-setting switches inactive (S4–S9), and the Latch Mode, \overline{PD} , and Gain Strobe switches active (S1, S2, and S3, respectively).


Figure 1. Switch and Jumper Block Positions for Enabled Device, Gain = 20 dB, Unlatched Gain Mode

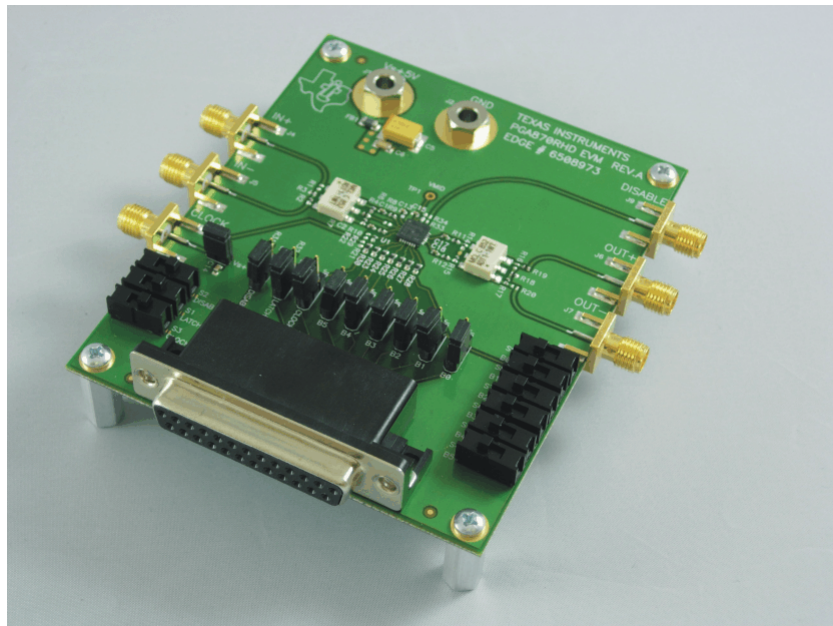


Figure 2. Jumper Block Positions for Device Gain, Latching, and Disable to be Controlled through DB25 Connector (J8)

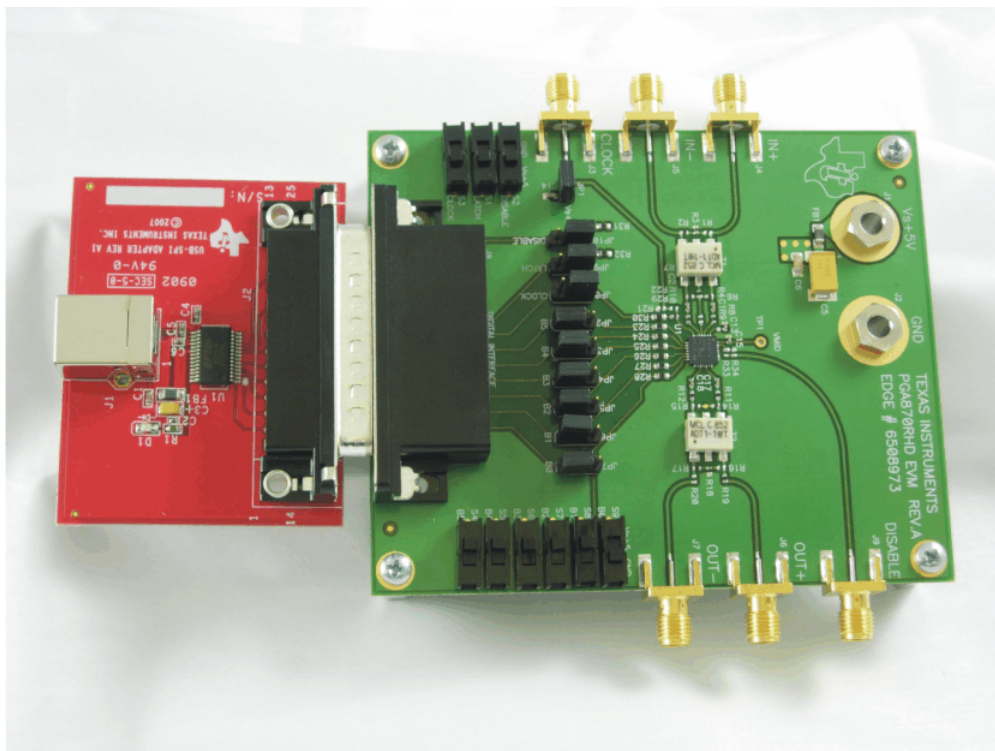


Figure 3. Switch and Jumper Block Positions for Device Gain (Unlatched Mode) Controlled through DB25 Connector and USB Interface Board

3 PGA870EVM Control Panel Graphical User Interface (GUI)

The gain of the device on the EVM may be controlled from a computer by using the PGA870 control panel GUI, the USB interface board in the EVM kit, and a USB cable. The GUI software installer (discussed in [Section 4](#)) is on the CD shipped with the EVM kit, and is also available for download through the [PGA870 product folder](#) on the TI web site. The GUI controls only the bits B0 to B5 of the gain control word. The control panel GUI does not control the Gain Strobe or Latch Mode control lines of the PGA870 itself. When using the GUI software, the Gain Strobe and Latch Mode lines must be controlled with the EVM onboard switches (S1 and S3) or with external connections.

4 GUI Software Installation and Use

To install the PGA870EVM GUI software, copy the software installer and the folder *USB_drivers* from the enclosed CD onto the Microsoft® Windows® desktop of the target computer. Double-click on the installer icon and follow the instructions to begin the installation; accept the terms of use and licensing agreements when that prompt appears. When the installation is complete, start the control panel GUI from the Windows *Start* menu by selecting **PGA870_Control_Panel.exe**. The GUI should appear, as shown in [Figure 4](#).

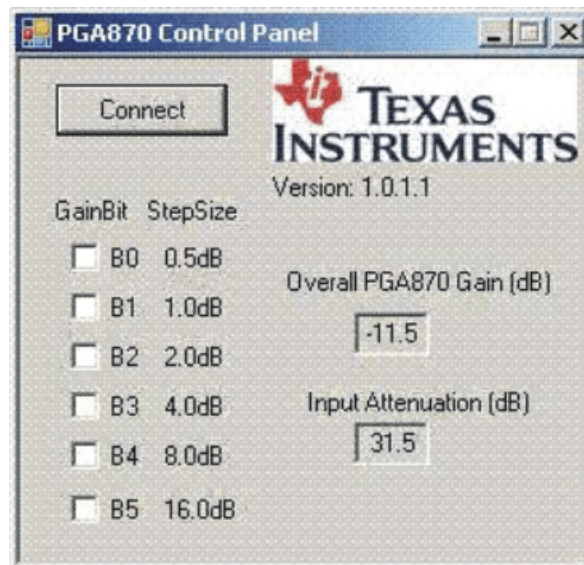


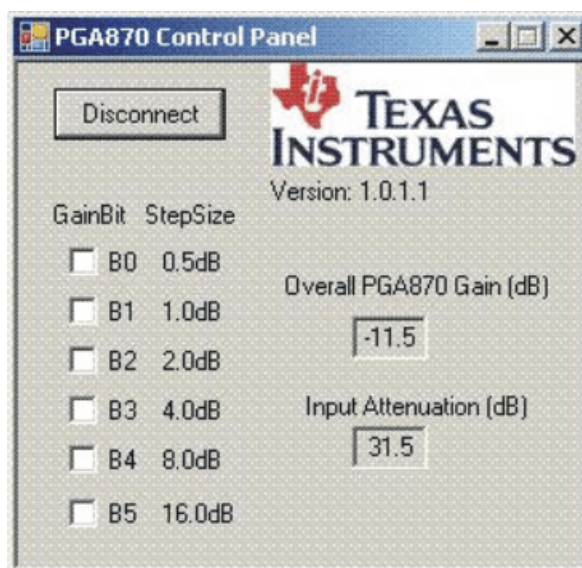
Figure 4. PGA870EVM Control Panel GUI After Installation, Before Successful Connection to PGA870EVM

Once the control panel GUI has been successfully installed, connect the USB interface board to the PGA870EVM J8 connector (DB25), and then connect the USB port to the host computer with a USB cable (provided). After connecting the USB cable, you may see a Microsoft Windows notification that *New hardware has been found*, and that new drivers are required. If you receive this notification, use the *Browse* option to direct the hardware installer to find the *USB_Drivers* folder. The driver installer may require several iterations in order to successfully complete the update process. The number of new drivers that are required depends on the host computer configuration and its unique update history.

After the GUI software installation and USB driver updates are completed, power up the PGA870EVM; make sure that the PGA870 device is in the Enabled state with switch S2, and the gain latch mode is set to *Unlatched* with switches S1 and S3.

NOTE: The EVM connection and switch (S3) labeled CLOCK provides the Gain Strobe function discussed in the product data sheet.

Once the connections are configured, click on the *Connect* button on the upper left corner of the control panel GUI. If the control panel successfully connects to the PGA870EVM, then the button label changes from **Connect** to **Disconnect** as Figure 5 shows. If the control panel software cannot connect to the PGA870EVM, the **Connect** button does not change to **Disconnect**. No other error message is generated.



Note: The button has changed from *Connect* to *Disconnect*.

Figure 5. PGA870EVM Control Panel GUI After Successful Connection to PGA870EVM

The boxes on the left side of the control panel GUI (see Figure 4) under the **GainBit** heading indicate the corresponding gain control bits as described in the PGA870 product data sheet. Bit B0 is the least significant bit (LSB) of the gain control word; it represents the smallest gain step of 0.5 dB. Bit B5 is the largest gain step (16 dB), and corresponds to the most significant gain control bit (MSB). Checking a box causes the GUI software to send a *high* signal to the corresponding gain control bit. Figure 5 corresponds to a minimum PGA870 gain of -11.5 dB.

The PGA870 gain corresponding to the gain setting (that is, the GainBit checked boxes) appears in the number field entitled, Overall PGA870 Gain (dB). The actual measured gain of the EVM may be less than the selected PGA870 gain because of losses in the resistive load and the EVM transformers.

The number field labeled **Input Attenuation (dB)** shows the equivalent loss of the PGA870 input attenuator. Consult the device data sheet for additional information.

Figure 6 shows examples of the GUI when it is connected to the PGA870EVM and used to select 20 dB of gain and 10 dB of gain, respectively.

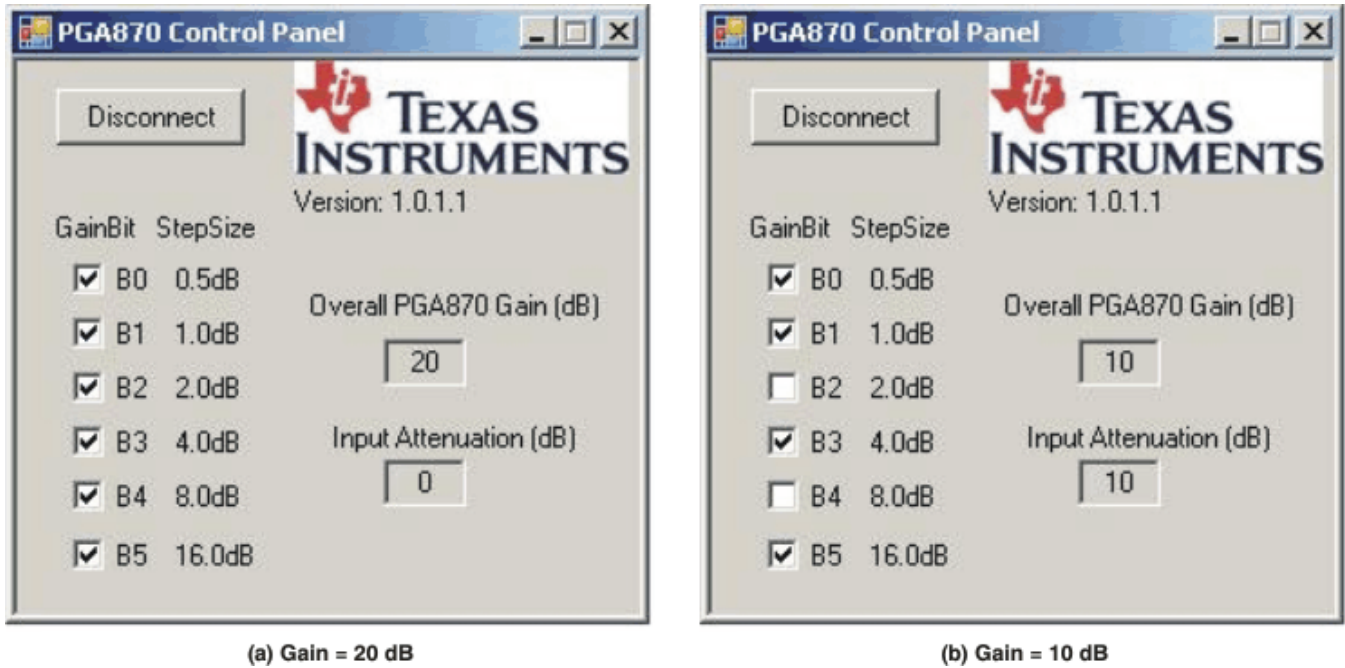
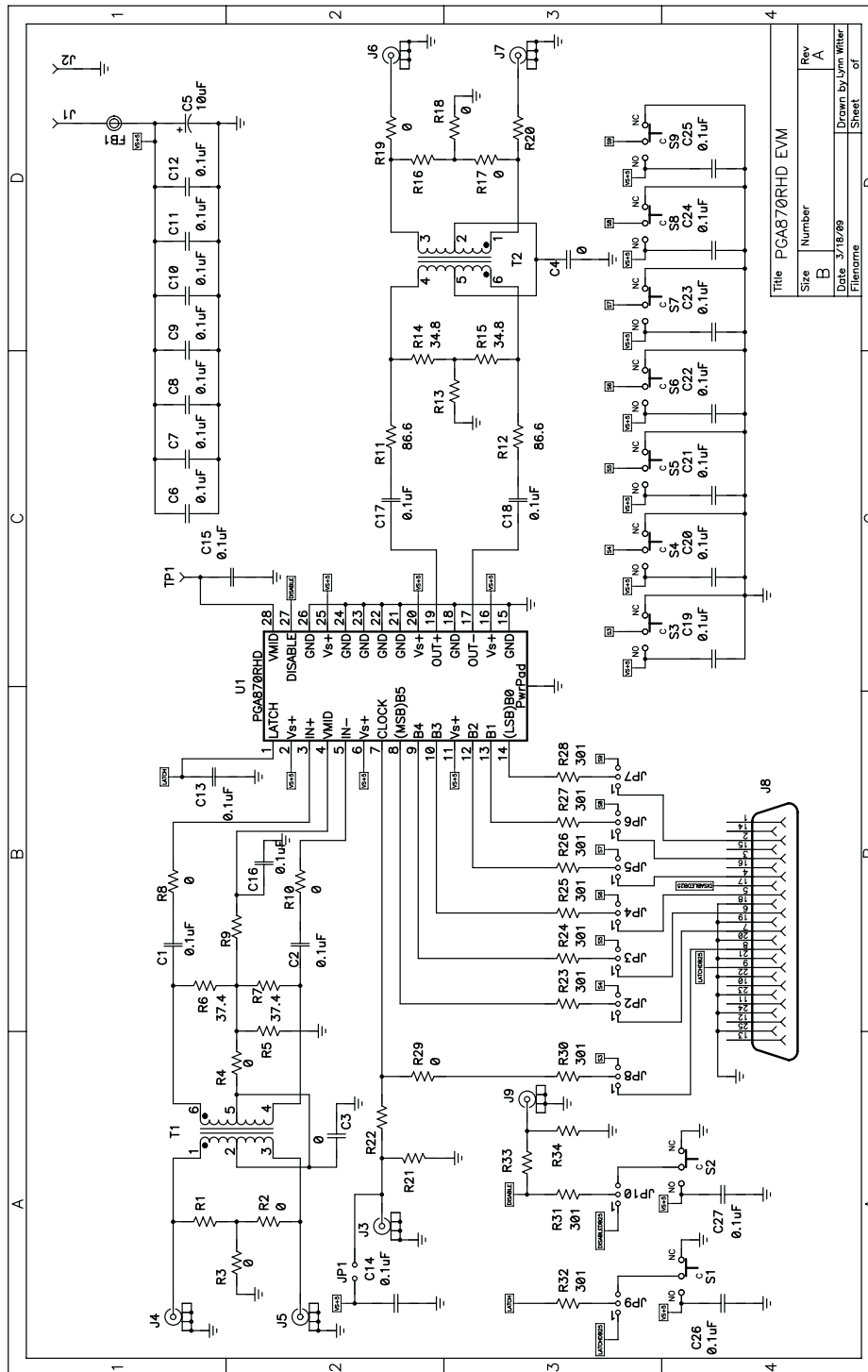


Figure 6. Examples of Control Panel GUI Connected to the PGA870EVM

5 Schematic and Parts List

The EVM schematic is shown in Figure 7.



Title		PGA870RHD EVM	
Size	Number	Rev	A
B		Drawn By	Lynn Witter
		Date	3/18/09
		Filename	
		Sheet	of

Figure 7. PGA870EVM Schematic

5.1 PCB Layout

The PGA870EVM PCB layers are shown in Figure 8 through Figure 11.

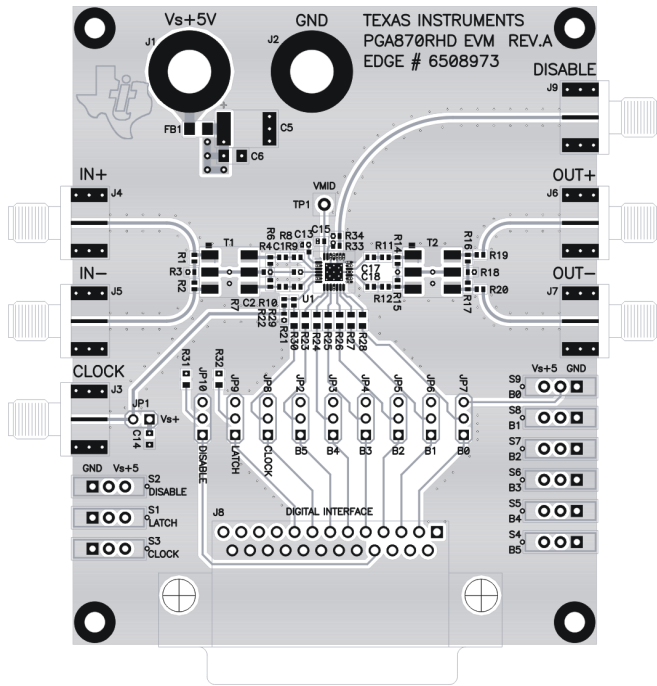


Figure 8. Top Layer (Layer 1)

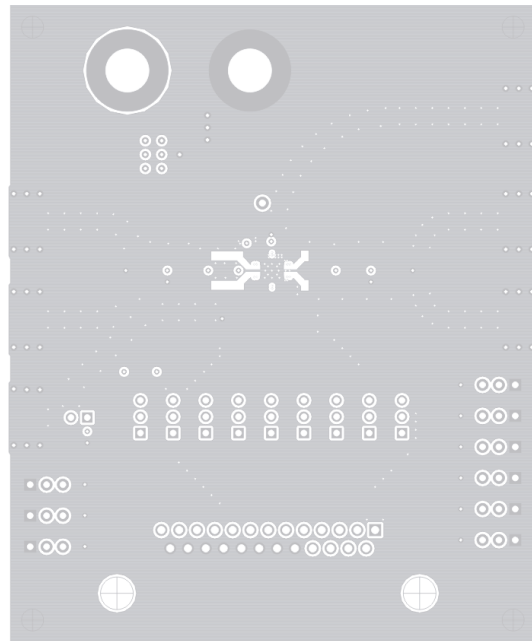


Figure 9. Ground Layer (Layer 2)

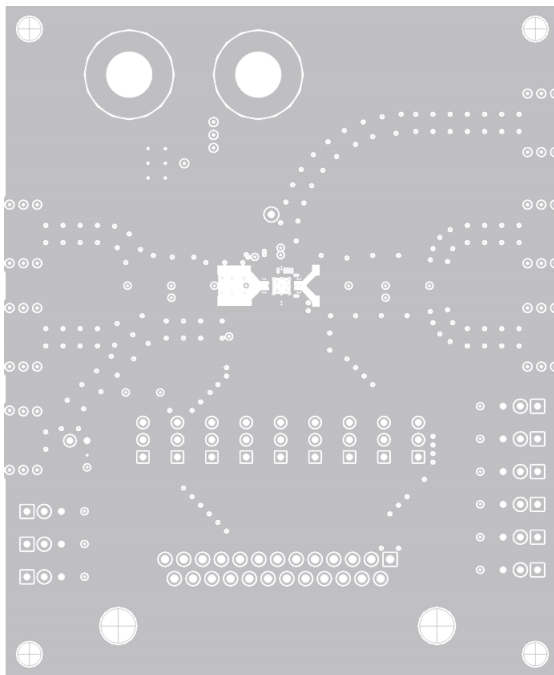


Figure 10. Power Layer (Layer 3)

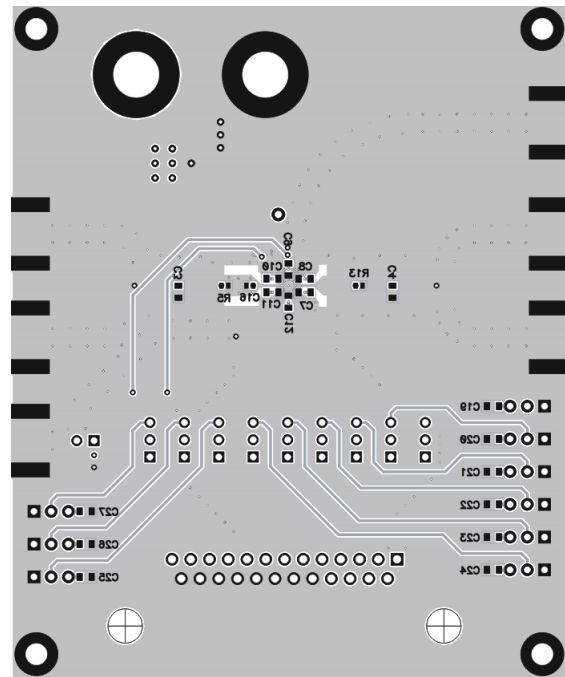


Figure 11. Bottom Layer (Layer 4)

5.2 Bill of Materials

Table 2 lists the bill of materials (BOM) for the PGA870EVM.

Table 2. PGA870EVM Bill of Materials

Item	RefDes	Qty	Description	SMD Size	Manufacturer	Part Number
1	FB1	1	Bead, ferrite, 3 A, 80 Ω	1206	Steward	HI1206N800R-10
2	C5	1	Capacitor, 10 μF, tantalum, 35 V, 10%	D	AVX	TAJD106K035RNJ
3	C1, C2, C13, C15, C16, C17, C18	7	Capacitor, 0.1 μF, ceramic, X5R, 16 V	0402	AVX	0402YD104KAT2A
4	C7, C8, C9, C10, C11, C12, C14, C19, C20, C21, C22, C23, C24, C25, C26, C27	16	Capacitor, 0.1 μF, ceramic, X7R, 16 V	0603	AVX	06033C104KAT2A
5	C6	1	Capacitor, 0.1 μF, ceramic, X7R, 50 V	1206	AVX	12065C104KAT2A
6	R1, R5, R9, R13, R16, R20, R21, R22, R33, R34	10	Open	0402	—	—
7	R2, R3, R4, R8, R10, R17, R18, R19, R29	9	Resistor, 0 Ω, 1/16W	0402	ROHM	MCR01MZPJ000
8	R14, R15	2	Resistor, 34.8 Ω, 1/16W, 1%	0402	Panasonic	ERJ-2RKF34R8X
9	R6, R7	2	Resistor, 37.4 Ω, 1/16W, 1%	0402	Panasonic	ERJ-2RKF37R4X
10	R11, R12	2	Resistor, 86.6 Ω, 1/16W, 1%	0402	Panasonic	ERJ-2RKF86R6X
11	C3, C4	2	Resistor, 0 Ω, 1/10W	0603	ROHM	MCR03EZPJ000
12	R23, R24, R25, R26, R27, R28, R30, R31, R32	9	Resistor, 301 Ω, 1/10W, 1%	0603	ROHM	MCR03EZPFX3010
13	T1, T2	2	Transformer, RF ⁽¹⁾		Mini-circuits	ADT1-1WT+
14	J1, J2	2	Jack, banana receptance, 0.025-in. dia. hole		SPC	813
15	J3, J4, J5, J6, J7, J9	6	Connector, edge, SMA PCB jack		Johnson	142-0701-801
16	J8	1	Connector, DB25, female		Norcomp	183-025-213R531
17	S1, S2, S3, S4, S5, S6, S7, S8, S9	9	Switch, slide SPDT		E-Switch	EG1218
18	JP1	1	Header, 0.1" CTRS, 0.025-in ² pins	2 POS.	Sullins	PBC36SAAN
19	JP2, JP3, JP4, JP5, JP6, JP7, JP8, JP9, JP10	9	Header, 0.1" CTRS, 0.025-in ² pins	3 POS.	Sullins	PBC36SAAN
20	JP1, JP2, JP3, JP4, JP5, JP6, JP7, JP8, JP9, JP10	10	Shunts		Sullins	SSC02SYAN
21	U1	1	IC, PGA870	RHD	TI	PGA870RHD
22		4	Standoff, 4-40 hex, 0.625-in. length		Keystone	1808
23		4	Screw, Phillips, 4-40, .250 in		BF	PMS 440 0031 PH
24			Board, printed circuit		TI	(TI) EDGE# 6508973
25		1	Board, PGA870 USB interface		TI	(TI) EDGE# 6514738

⁽¹⁾ Mount T2 180° from the Pin 1 marking on the board.

Revision History

Changes from Original (December, 2009) to A Revision	Page
• Updated PGA870EVM kit contents list	2
• Revised paragraphs that describe the process of connecting the PGA870EVM to the host computer	5
• Corrected figure captions for Figure 8 through Figure 11	9

NOTE: Page numbers for previous revisions may differ from page numbers in the current version.

Evaluation Board/Kit Important Notice

Texas Instruments (TI) provides the enclosed product(s) under the following conditions:

This evaluation board/kit is intended for use for **ENGINEERING DEVELOPMENT, DEMONSTRATION, OR EVALUATION PURPOSES ONLY** and is not considered by TI to be a finished end-product fit for general consumer use. Persons handling the product(s) must have electronics training and observe good engineering practice standards. As such, the goods being provided are not intended to be complete in terms of required design-, marketing-, and/or manufacturing-related protective considerations, including product safety and environmental measures typically found in end products that incorporate such semiconductor components or circuit boards. This evaluation board/kit does not fall within the scope of the European Union directives regarding electromagnetic compatibility, restricted substances (RoHS), recycling (WEEE), FCC, CE or UL, and therefore may not meet the technical requirements of these directives or other related directives.

Should this evaluation board/kit not meet the specifications indicated in the User's Guide, the board/kit may be returned within 30 days from the date of delivery for a full refund. **THE FOREGOING WARRANTY IS THE EXCLUSIVE WARRANTY MADE BY SELLER TO BUYER AND IS IN LIEU OF ALL OTHER WARRANTIES, EXPRESSED, IMPLIED, OR STATUTORY, INCLUDING ANY WARRANTY OF MERCHANTABILITY OR FITNESS FOR ANY PARTICULAR PURPOSE.**

The user assumes all responsibility and liability for proper and safe handling of the goods. Further, the user indemnifies TI from all claims arising from the handling or use of the goods. Due to the open construction of the product, it is the user's responsibility to take any and all appropriate precautions with regard to electrostatic discharge.

EXCEPT TO THE EXTENT OF THE INDEMNITY SET FORTH ABOVE, NEITHER PARTY SHALL BE LIABLE TO THE OTHER FOR ANY INDIRECT, SPECIAL, INCIDENTAL, OR CONSEQUENTIAL DAMAGES.

TI currently deals with a variety of customers for products, and therefore our arrangement with the user **is not exclusive.**

TI assumes **no liability for applications assistance, customer product design, software performance, or infringement of patents or services described herein.**

Please read the User's Guide and, specifically, the Warnings and Restrictions notice in the User's Guide prior to handling the product. This notice contains important safety information about temperatures and voltages. For additional information on TI's environmental and/or safety programs, please contact the TI application engineer or visit www.ti.com/esh.

No license is granted under any patent right or other intellectual property right of TI covering or relating to any machine, process, or combination in which such TI products or services might be or are used.

FCC Warning

This evaluation board/kit is intended for use for **ENGINEERING DEVELOPMENT, DEMONSTRATION, OR EVALUATION PURPOSES ONLY** and is not considered by TI to be a finished end-product fit for general consumer use. It generates, uses, and can radiate radio frequency energy and has not been tested for compliance with the limits of computing devices pursuant to part 15 of FCC rules, which are designed to provide reasonable protection against radio frequency interference. Operation of this equipment in other environments may cause interference with radio communications, in which case the user at his own expense will be required to take whatever measures may be required to correct this interference.

EVM Warnings and Restrictions

It is important to operate this EVM within the input voltage range of 0 V to +5 V and the output voltage range of 0 V to +5 V.

Exceeding the specified input range may cause unexpected operation and/or irreversible damage to the EVM. If there are questions concerning the input range, please contact a TI field representative prior to connecting the input power.

Applying loads outside of the specified output range may result in unintended operation and/or possible permanent damage to the EVM. Please consult the EVM User's Guide prior to connecting any load to the EVM output. If there is uncertainty as to the load specification, please contact a TI field representative.

During normal operation, some circuit components may have case temperatures greater than +85° C. The EVM is designed to operate properly with certain components above +85° C as long as the input and output ranges are maintained. These components include but are not limited to linear regulators, switching transistors, pass transistors, and current sense resistors. These types of devices can be identified using the EVM schematic located in the EVM User's Guide. When placing measurement probes near these devices during operation, please be aware that these devices may be very warm to the touch.

Mailing Address: Texas Instruments, Post Office Box 655303, Dallas, Texas 75265
Copyright © 2010, Texas Instruments Incorporated

IMPORTANT NOTICE

Texas Instruments Incorporated and its subsidiaries (TI) reserve the right to make corrections, modifications, enhancements, improvements, and other changes to its products and services at any time and to discontinue any product or service without notice. Customers should obtain the latest relevant information before placing orders and should verify that such information is current and complete. All products are sold subject to TI's terms and conditions of sale supplied at the time of order acknowledgment.

TI warrants performance of its hardware products to the specifications applicable at the time of sale in accordance with TI's standard warranty. Testing and other quality control techniques are used to the extent TI deems necessary to support this warranty. Except where mandated by government requirements, testing of all parameters of each product is not necessarily performed.

TI assumes no liability for applications assistance or customer product design. Customers are responsible for their products and applications using TI components. To minimize the risks associated with customer products and applications, customers should provide adequate design and operating safeguards.

TI does not warrant or represent that any license, either express or implied, is granted under any TI patent right, copyright, mask work right, or other TI intellectual property right relating to any combination, machine, or process in which TI products or services are used. Information published by TI regarding third-party products or services does not constitute a license from TI to use such products or services or a warranty or endorsement thereof. Use of such information may require a license from a third party under the patents or other intellectual property of the third party, or a license from TI under the patents or other intellectual property of TI.

Reproduction of TI information in TI data books or data sheets is permissible only if reproduction is without alteration and is accompanied by all associated warranties, conditions, limitations, and notices. Reproduction of this information with alteration is an unfair and deceptive business practice. TI is not responsible or liable for such altered documentation. Information of third parties may be subject to additional restrictions.

Resale of TI products or services with statements different from or beyond the parameters stated by TI for that product or service voids all express and any implied warranties for the associated TI product or service and is an unfair and deceptive business practice. TI is not responsible or liable for any such statements.

TI products are not authorized for use in safety-critical applications (such as life support) where a failure of the TI product would reasonably be expected to cause severe personal injury or death, unless officers of the parties have executed an agreement specifically governing such use. Buyers represent that they have all necessary expertise in the safety and regulatory ramifications of their applications, and acknowledge and agree that they are solely responsible for all legal, regulatory and safety-related requirements concerning their products and any use of TI products in such safety-critical applications, notwithstanding any applications-related information or support that may be provided by TI. Further, Buyers must fully indemnify TI and its representatives against any damages arising out of the use of TI products in such safety-critical applications.

TI products are neither designed nor intended for use in military/aerospace applications or environments unless the TI products are specifically designated by TI as military-grade or "enhanced plastic." Only products designated by TI as military-grade meet military specifications. Buyers acknowledge and agree that any such use of TI products which TI has not designated as military-grade is solely at the Buyer's risk, and that they are solely responsible for compliance with all legal and regulatory requirements in connection with such use.

TI products are neither designed nor intended for use in automotive applications or environments unless the specific TI products are designated by TI as compliant with ISO/TS 16949 requirements. Buyers acknowledge and agree that, if they use any non-designated products in automotive applications, TI will not be responsible for any failure to meet such requirements.

Following are URLs where you can obtain information on other Texas Instruments products and application solutions:

Products		Applications	
Amplifiers	amplifier.ti.com	Audio	www.ti.com/audio
Data Converters	dataconverter.ti.com	Automotive	www.ti.com/automotive
DLP® Products	www.dlp.com	Communications and Telecom	www.ti.com/communications
DSP	dsp.ti.com	Computers and Peripherals	www.ti.com/computers
Clocks and Timers	www.ti.com/clocks	Consumer Electronics	www.ti.com/consumer-apps
Interface	interface.ti.com	Energy	www.ti.com/energy
Logic	logic.ti.com	Industrial	www.ti.com/industrial
Power Mgmt	power.ti.com	Medical	www.ti.com/medical
Microcontrollers	microcontroller.ti.com	Security	www.ti.com/security
RFID	www.ti-rfid.com	Space, Avionics & Defense	www.ti.com/space-avionics-defense
RF/IF and ZigBee® Solutions	www.ti.com/lprf	Video and Imaging	www.ti.com/video
		Wireless	www.ti.com/wireless-apps

Mailing Address: Texas Instruments, Post Office Box 655303, Dallas, Texas 75265
Copyright © 2010, Texas Instruments Incorporated