

AN-2211 LP5560 Evaluation Board

1 Evaluation Board Setup

Figure 1 shows how to set up the LP5560 evaluation board. This configuration uses an on-board microcontroller to control the LP5560's CTRL input; the board is powered from the USB port. If an external source to drive the control signal is preferred, remove the CTRL jumper and connect the external control signal into the pin marked CTRL at the pin rail. The GND pin is located next to the CTRL pin for easy connection.

The evaluation board can be powered from a USB connector or from an external power supply. To use an external power supply, connect the power leads to the power connector and keep the VDD voltage between 2.7V and 5.5V. Connect the positive terminal of the external power supply to the VDD terminal and the negative terminal to GND terminal.

I/O voltage can be supplied from the microcontroller's integrated LDO (3.3V) or from an external power supply. The I/O voltage sets the CTRL signals high level. The external I/O voltage can be connected to VDD; a separate I/O voltage can be connected to VIOX pin. Note that the onboard microcontroller's (Silicon Labs C8051F326) I/O voltage needs to be from 1.8V to 3.6V. The LP5560 accepts I/O logic high levels from 1.1V to VDD.

The onboard microcontroller has a USB interface to communicate with the PC. Connect the evaluation board to the PC with a USB cable. Evaluation software is used to control the LP5560 CTRL input. The evaluation software setup and use are described in the following sections.

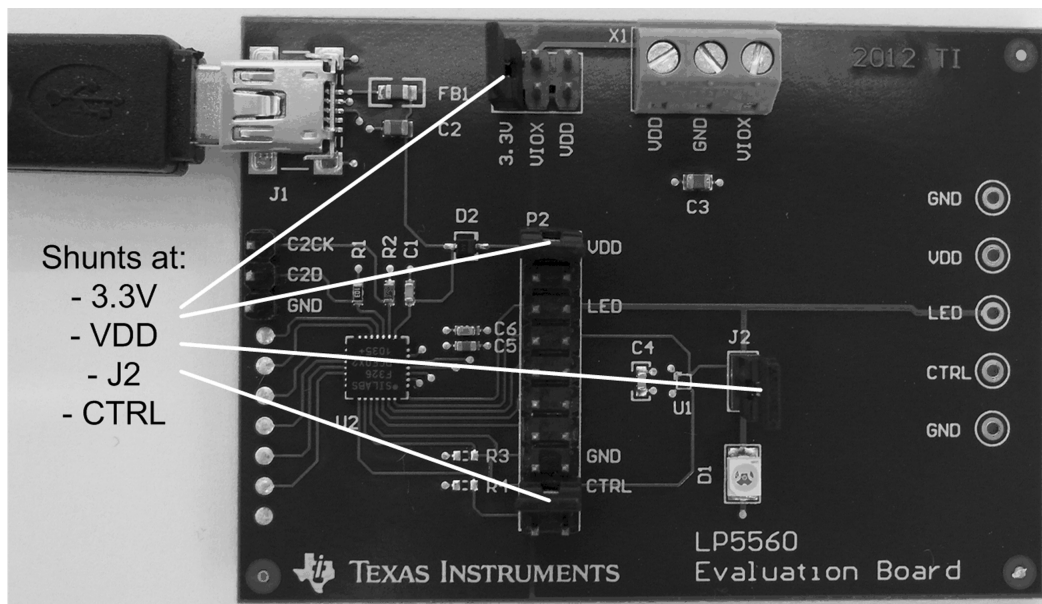


Figure 1. Evaluation Board Setup

2 Evaluation Board Schematic

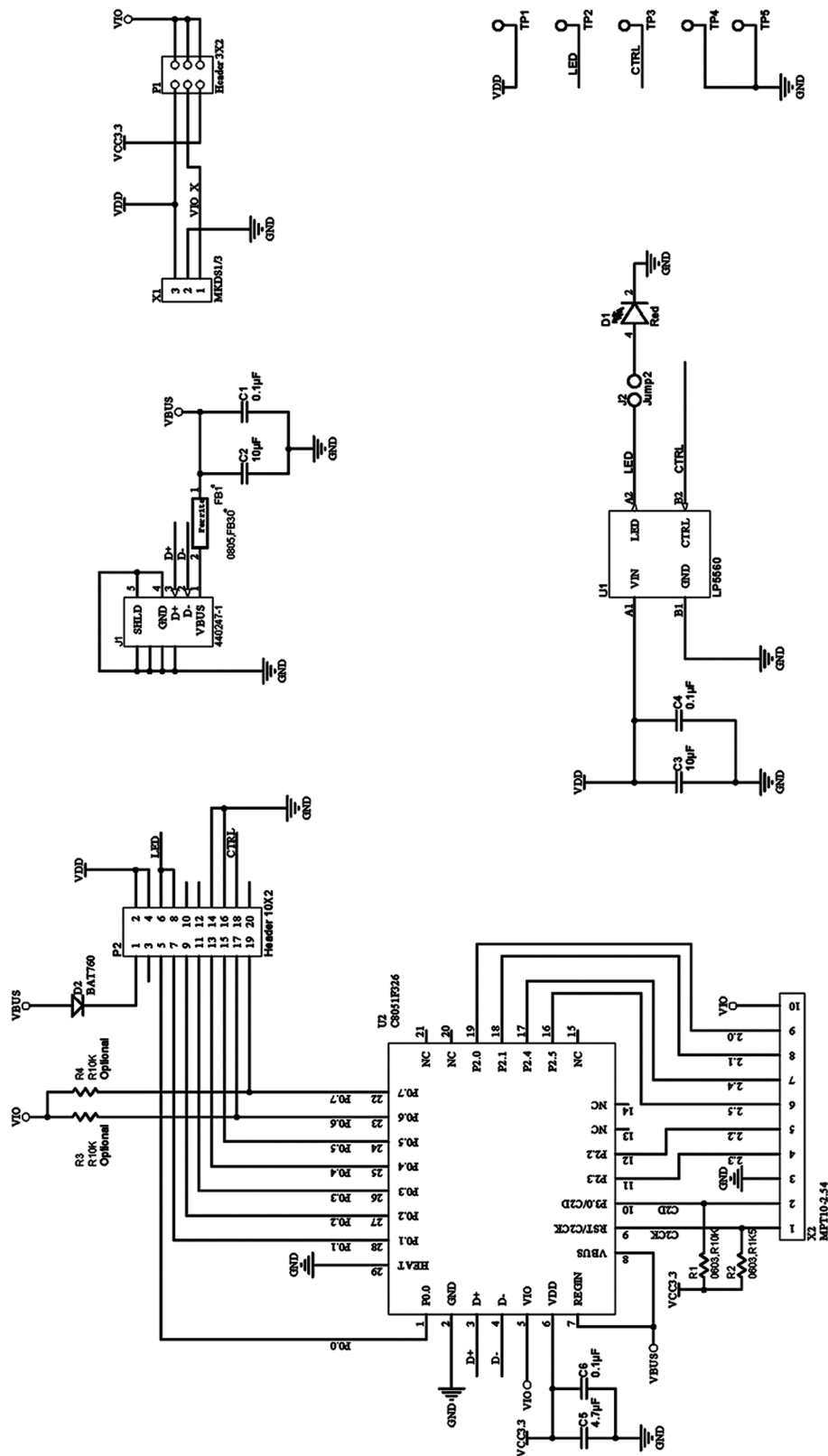


Figure 2. Evaluation Board Schematic

3 Evaluation Software

Copy the evaluation software (LP5560.exe) and all the included .dll files to your hard drive. The evaluation software doesn't need installation and can be run by double-clicking the icon. If the evaluation board is set up correctly the evaluation software's user interface should look like [Figure 3](#). The status bar at the right side of the bottom row should say "connected". This indicates that the connection between the microcontroller and the computer's USB interface is working correctly. If the connection fails the status bar will say "not connected". In this case check that the evaluation board is connected to the USB port and that the evaluation board's jumpers are in the correct places. If the external I/O voltage is used verify that the I/O voltage is at an acceptable level (between 1.8V to 3.6V).

To start the default blinking sequence, click the Run button and verify that the LED is blinking. Now the evaluation board is working correctly, and you can start testing different blinking sequences. Stop the blinking sequence by clicking the Run button again. New blinking sequences can be trained into the device by selecting the desired on, off, rise and fall times with the sliders. The blinking sequence is trained into the LP5560 by clicking the Train X Pulses button where 'X' is the number of pulses. [Figure 4](#) shows the evaluation software after three pulses are trained into the LP5560. Once the Train X button is pressed a preview of the sequence is shown on the preview window.

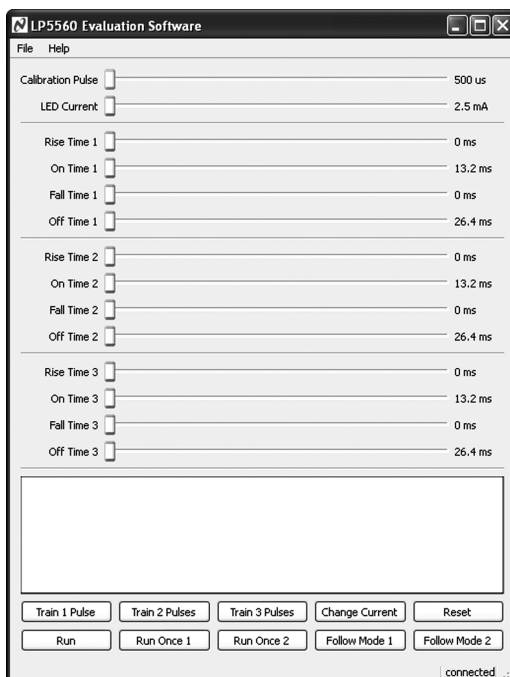


Figure 3. Evaluation SW Start Screen

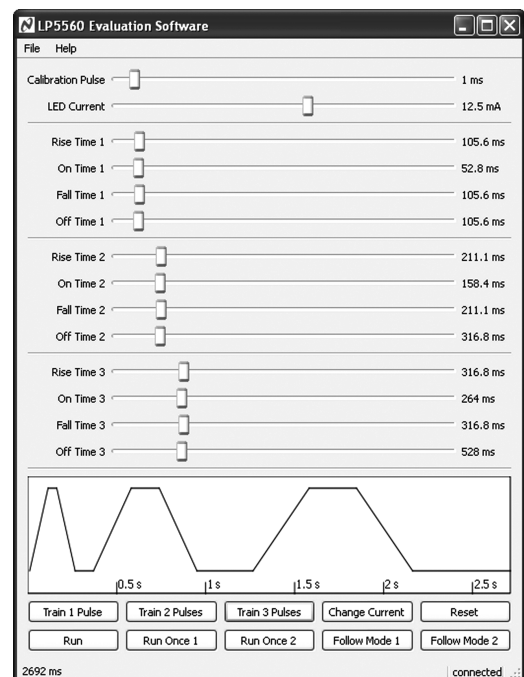


Figure 4. Evaluation Software After Three Pulses are Trained Into the LP5560

4 Evaluation Software Controls

The LP5560 is a programmable LED driver that can generate a variety of blinking sequences with up to three pulses of a different length per pulse. Blinking sequences can be programmed through a single-wire interface. Programmable parameters include on and off times as well as rise and fall times. The LED current can also be set through the single-wire interface. Evaluation software can control all programmable parameters of LP5560.

4.1 Calibration Pulse Slider

The Calibration Pulse slider controls the calibration pulse length. Calibration pulse can be set from 500 μ s to 10 ms. The indicator on the right side of the slider shows the selected value.

4.2 LED Current Slider

The LED current slider controls the LED current. A new current can be trained into the device with the Change Current button or together with a new blinking sequence. The indicator on the right side of the slider shows the selected value.

4.3 Rise Time X Slider

The Rise-Time slider sets the LED current rise time for pulse X. Rise time can be set from 0 to 1584 ms. Each pulse has its own rise time control. The indicator on the right side of the slider shows the selected value.

4.4 On Time X Slider

The On-Time control sets the LED on time for pulse X. On time can be set from 13.2 ms to 3009.6 ms. Each pulse has its own on-time control. The indicator on the right side of the slider shows the selected value.

4.5 Fall Time X Slider

The Fall-Time slider sets the LED current fall time for pulse X. Fall time can be set from 0 to 1584 ms. Each pulse has own fall-time control. The indicator on the right side of the slider shows the selected value.

4.6 Off Time X Slider

The Off-Time control sets the LED off time for pulse X. On time can be set from 26.4 ms to 6019.2 ms. Each pulse has own on-time control. Indicator on the right side of the slider shows the selected value.

4.7 Train 1 Pulse Button

The Train 1 Pulse button generates a training sequence for one pulse. Once the button is clicked a preview window is updated.

4.8 Train 2 Pulses Button

The Train 2 Pulse button generates a training sequence for two pulses. Once the button is clicked a preview window is updated.

4.9 Train 3 Pulse Button

The Train 3 Pulse button generates a training sequence for three pulses. Once the button is clicked a preview window is updated.

4.10 Change Current Button

The Change Current button changes the LED current without changing the previously trained blinking sequence. If the device is in Follow mode, it remains in Follow mode, but the current changes.

4.11 Reset Button

The Reset button resets the device to factory defaults.

4.12 Run Button

The Run button sets the CTRL pin high. This sets the LP5560 to Run mode. The CTRL pin stays high until the Run button is clicked again. While the Run button is active all other control buttons are disabled.

4.13 Run Once 1 Button

The Run Once 1 button generates a Run Once command (see *LP5560 Programmable LED Driver with Single-Wire Interface* ([SNVS873](#))) and leaves CTRL high. The LP5560 generates the programmed blinking sequence only once. The CTRL line remains high until the Run Once 1 button is clicked again. While the Run Once 1 button is active all other control buttons are disabled.

4.14 Run Once 2 Button

The Run Once 2 button generates a Run Once command (see *LP5560 Programmable LED Driver with Single-Wire Interface* ([SNVS873](#))) and leaves CTRL low. After this, click the Run button to trig the blinking sequence. Once the Run button is clicked, the device generates the programmed blinking sequence only once.

4.15 Follow Mode 1 Button

The Follow Mode 1 button sets the LP5560 into Follow mode. In Follow mode the LED stays on as long as CTRL is held high, and Rise Time 1 and Fall Time 1 settings are used to ramp the LED current up and down. To turn the LED to turn on and off without ramps, first train a sequence with Rise Time 1 and Fall Time 1 settings at zero, then set the device into Follow mode.

4.16 Follow Mode 2 Button

The Follow Mode 2 button sets the LP5560 into Follow mode and reprograms the Rise Time 1 and LED current settings.

IMPORTANT NOTICE

Texas Instruments Incorporated and its subsidiaries (TI) reserve the right to make corrections, enhancements, improvements and other changes to its semiconductor products and services per JESD46, latest issue, and to discontinue any product or service per JESD48, latest issue. Buyers should obtain the latest relevant information before placing orders and should verify that such information is current and complete. All semiconductor products (also referred to herein as "components") are sold subject to TI's terms and conditions of sale supplied at the time of order acknowledgment.

TI warrants performance of its components to the specifications applicable at the time of sale, in accordance with the warranty in TI's terms and conditions of sale of semiconductor products. Testing and other quality control techniques are used to the extent TI deems necessary to support this warranty. Except where mandated by applicable law, testing of all parameters of each component is not necessarily performed.

TI assumes no liability for applications assistance or the design of Buyers' products. Buyers are responsible for their products and applications using TI components. To minimize the risks associated with Buyers' products and applications, Buyers should provide adequate design and operating safeguards.

TI does not warrant or represent that any license, either express or implied, is granted under any patent right, copyright, mask work right, or other intellectual property right relating to any combination, machine, or process in which TI components or services are used. Information published by TI regarding third-party products or services does not constitute a license to use such products or services or a warranty or endorsement thereof. Use of such information may require a license from a third party under the patents or other intellectual property of the third party, or a license from TI under the patents or other intellectual property of TI.

Reproduction of significant portions of TI information in TI data books or data sheets is permissible only if reproduction is without alteration and is accompanied by all associated warranties, conditions, limitations, and notices. TI is not responsible or liable for such altered documentation. Information of third parties may be subject to additional restrictions.

Resale of TI components or services with statements different from or beyond the parameters stated by TI for that component or service voids all express and any implied warranties for the associated TI component or service and is an unfair and deceptive business practice. TI is not responsible or liable for any such statements.

Buyer acknowledges and agrees that it is solely responsible for compliance with all legal, regulatory and safety-related requirements concerning its products, and any use of TI components in its applications, notwithstanding any applications-related information or support that may be provided by TI. Buyer represents and agrees that it has all the necessary expertise to create and implement safeguards which anticipate dangerous consequences of failures, monitor failures and their consequences, lessen the likelihood of failures that might cause harm and take appropriate remedial actions. Buyer will fully indemnify TI and its representatives against any damages arising out of the use of any TI components in safety-critical applications.

In some cases, TI components may be promoted specifically to facilitate safety-related applications. With such components, TI's goal is to help enable customers to design and create their own end-product solutions that meet applicable functional safety standards and requirements. Nonetheless, such components are subject to these terms.

No TI components are authorized for use in FDA Class III (or similar life-critical medical equipment) unless authorized officers of the parties have executed a special agreement specifically governing such use.

Only those TI components which TI has specifically designated as military grade or "enhanced plastic" are designed and intended for use in military/aerospace applications or environments. Buyer acknowledges and agrees that any military or aerospace use of TI components which have **not** been so designated is solely at the Buyer's risk, and that Buyer is solely responsible for compliance with all legal and regulatory requirements in connection with such use.

TI has specifically designated certain components as meeting ISO/TS16949 requirements, mainly for automotive use. In any case of use of non-designated products, TI will not be responsible for any failure to meet ISO/TS16949.

Products

Audio	www.ti.com/audio
Amplifiers	amplifier.ti.com
Data Converters	dataconverter.ti.com
DLP® Products	www.dlp.com
DSP	dsp.ti.com
Clocks and Timers	www.ti.com/clocks
Interface	interface.ti.com
Logic	logic.ti.com
Power Mgmt	power.ti.com
Microcontrollers	microcontroller.ti.com
RFID	www.ti-rfid.com
OMAP Applications Processors	www.ti.com/omap
Wireless Connectivity	www.ti.com/wirelessconnectivity

Applications

Automotive and Transportation	www.ti.com/automotive
Communications and Telecom	www.ti.com/communications
Computers and Peripherals	www.ti.com/computers
Consumer Electronics	www.ti.com/consumer-apps
Energy and Lighting	www.ti.com/energy
Industrial	www.ti.com/industrial
Medical	www.ti.com/medical
Security	www.ti.com/security
Space, Avionics and Defense	www.ti.com/space-avionics-defense
Video and Imaging	www.ti.com/video

TI E2E Community

e2e.ti.com