

High Voltage, Low I_Q , Synchronous Inverting DC/DC Controller

DESCRIPTION

Demonstration circuit 2447A is a high voltage, high efficiency synchronous inverting converter featuring the [LTC®3896](#). This demo board has a wide input voltage range from 7V to 72V and produces a -12V output voltage.

The DC2447A is capable of delivering up to 5A of output current. Note that the thermal stress increases at lower input voltages due to increased input current.

This demo board supports four operation modes consisting of fixed-frequency modulation, pulse skipping, Burst Mode® Operation (default mode) and adjustable Burst Mode operation. During a light load condition, fixed-frequency mode reduces output voltage ripple and yields the lowest noise spectrum. Burst mode operation employs a variable frequency algorithm that minimizes the no-load quiescent current and improves light load efficiency.

The DC2447A consumes less than 12µA of current in shutdown and consumes only 100µA of quiescent current when the output is in regulation, unloaded and configured for Burst Mode operation which helps extend the run-time in battery powered applications. This demo board operates at a 300kHz switching frequency and can easily be adjusted from 50kHz to 900kHz.

To prevent high on-chip power dissipation in high input voltage applications, the LTC3896 includes an onboard

driver to drive the gate of an external N-channel MOSFET which acts as a linear regulator to power the IC.

The LTC3896 can support a wide output voltage range from -0.8V to -60V. However, the voltage difference between the input voltage and output voltage should not exceed the maximum voltage of the switching semiconductors (100V for DC2447A) and shown by the equation $|-V_{OUT}| + V_{IN} < V_{DS}$.

The DC2447A is set to provide a 10V gate drive voltage (DRV_{CC}) for the switching MOSFETs. It has an UVLO of 7.5V rising and 6.7V falling. However, the gate drive voltage and UVLO voltages can be adjusted lowered. See the LTC3896 data sheet for details.

The DC2447A was designed to support multiple footprints of input and output capacitors, and inductors to accommodate a variety of applications.

The LTC3896 data sheet gives a complete description of the part, contains operating and application information, and must be read in conjunction with this data sheet.

Design files for this circuit board are available at [DC2447A](#)

All registered trademarks and trademarks are the property of their respective owners.

PERFORMANCE SUMMARY Specifications are at $T_A = 25^\circ\text{C}$

PARAMETER	CONDITIONS	VALUE
Minimum Input Voltage		7V
Maximum Input Voltage		72V
Output Voltage V_{OUT} - Regulation	$V_{IN} = 7V - 72V$	-12V $\pm 2\%$
Maximum Continuous Output Current		5A
Preset Operating Frequency	$R26 = 36.5k\Omega$	200kHz
External Clock Sync. Frequency Range		75kHz - 850Hz
Efficiency	$V_{IN} = 24V, V_{OUT} = -12.0V, I_{OUT} = 5A$	93%
Typical Output Ripple V_{OUT} -	$V_{IN} = 24V, V_{OUT} = -12V, I_{OUT} = 2.5A$ (20MHz BW)	<70mV _{p-p}
Quiescent Current at Shut-Down	$V_{IN} = 24V$	<12µA

QUICK START PROCEDURE

Demonstration circuit 2447A is easy to set up to evaluate the performance of the LTC3896. For proper measurement equipment configuration, set up the circuit according to the diagram in Figure 1. Before proceeding to test, insert shunt into JP1 (RUN) into OFF position, which connects the RUN pin to ground (GND) and shuts down the output. Set jumper JP2 (MODE) into the FCM (Forced Continuous Conduction Mode) position.

NOTE: When measuring the input or output voltage ripple, care must be taken to avoid a long ground lead on the oscilloscope probe. Measure the input or output voltage ripple by touching the probe tip directly across the V_{IN} or V_{OUT-} and GND terminals. See Figure 2 for proper scope probe technique.

1. With the DC2447A set up according to the proper measurement and equipment in Figure 1, apply 16V at V_{IN} . Measure V_{OUT-} ; it should read 0V. If desired, one can measure the shutdown supply current at this point. The supply current will be approximately 12 μ A, or less, in shutdown.
2. Turn on V_{OUT-} of the circuit by inserting the shunt in header JP1 (RUN) into the ON position. The output

voltage should be regulating. Measure V_{OUT-} and it should measure $-12.0V \pm 2\%$ (Do not apply more than the maximum voltage of 72V to the board or the part may be damaged). Vary the V_{OUT-} load, which should not exceed 5A. Vary the input voltage from 7V to 72V, the V_{OUT-} , it should measure $-12.0V \pm 2\%$.

3. Set output current to zero and move jumper JP2 (MODE) into Burst Default position and measure V_{OUT-} . It should be $-12.0V \pm 2\%$. Vary the V_{OUT-} load, which should not exceed 5A. Vary the input voltage from 7V to 72V, the V_{OUT-} , it should measure $-12.0V \pm 2\%$.
4. Set output current to zero and move jumper JP2 (MODE) into Pulse Skip position and measure V_{OUT-} . It should be $-12.0V \pm 2\%$. Vary the V_{OUT-} load, which should not exceed 5A. Vary the input voltage from 7V to 72V, the V_{OUT-} , it should measure $-12.0V \pm 2\%$.

DC2447A supports synchronization to external clock referenced to input GND; use PLLIN terminal for synchronization. PGOOD signal also referenced to input GND. To activate PGOOD functionality, connect external voltage source to terminals V_{PGOOD} and GND. DC2447A also supports $EXTV_{CC}$ function, however $EXTV_{CC}$ is referenced to V_{OUT-} .

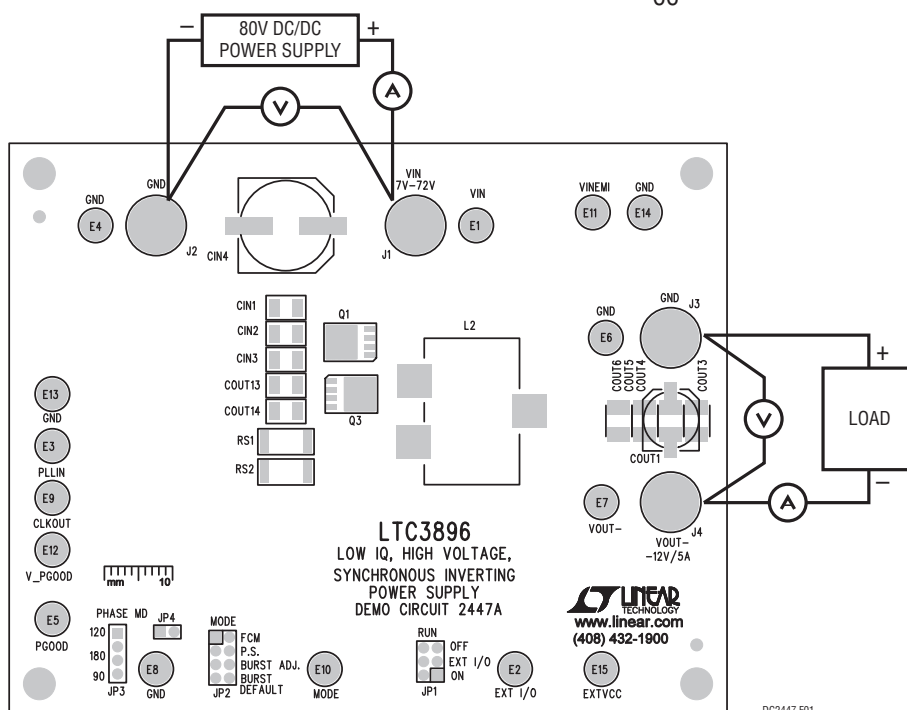


Figure 1. Proper Measurement Equipment Setup

QUICK START PROCEDURE

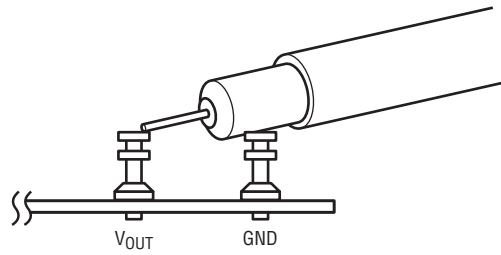


Figure 2. Measuring Input or Output Ripple

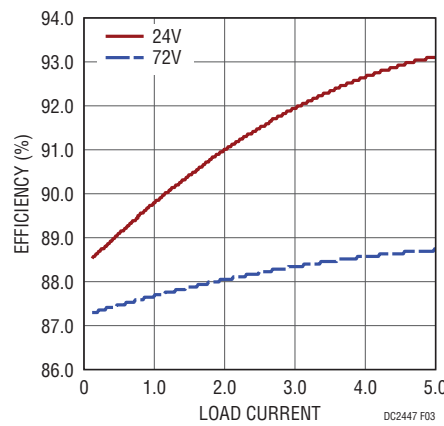
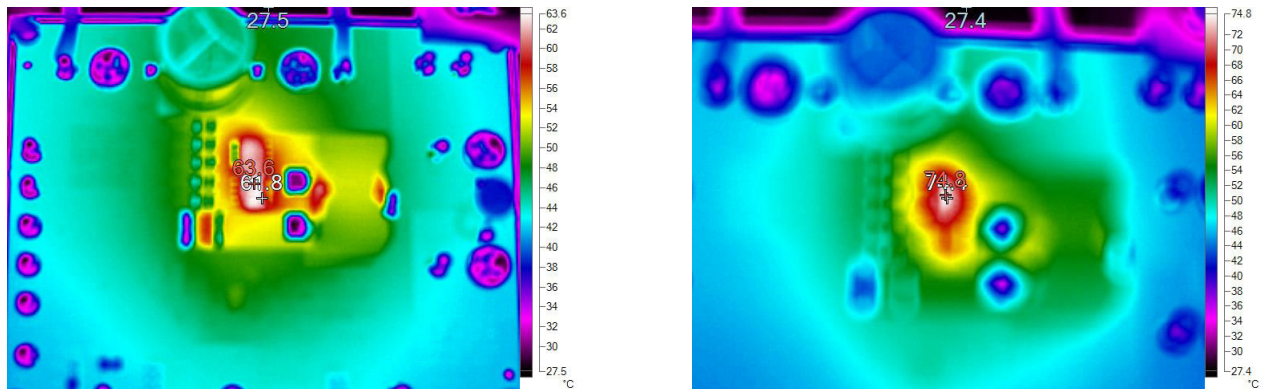


Figure 3. Efficiency vs Load Current for Different Input Voltages



a) $V_{IN} = 12V$

b) $V_{IN} = 48V$

Figure 4. Thermal Map, V_{IN} 12V and 48V (Left to Right) V_{OUT} is -12V at 5.0A. No Air Flow, $T_A = 25^\circ C$

QUICK START PROCEDURE

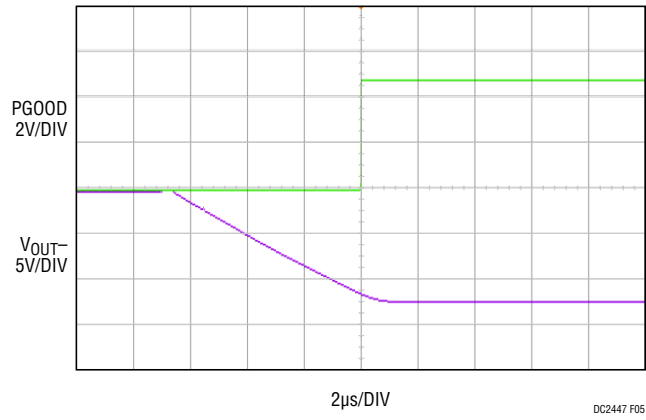


Figure 5. Start-UP to Full Load. V_PG00D Connected to External +5V. As VOUT- Approaches -12V, PG00D Signal Changes State

PARTS LIST

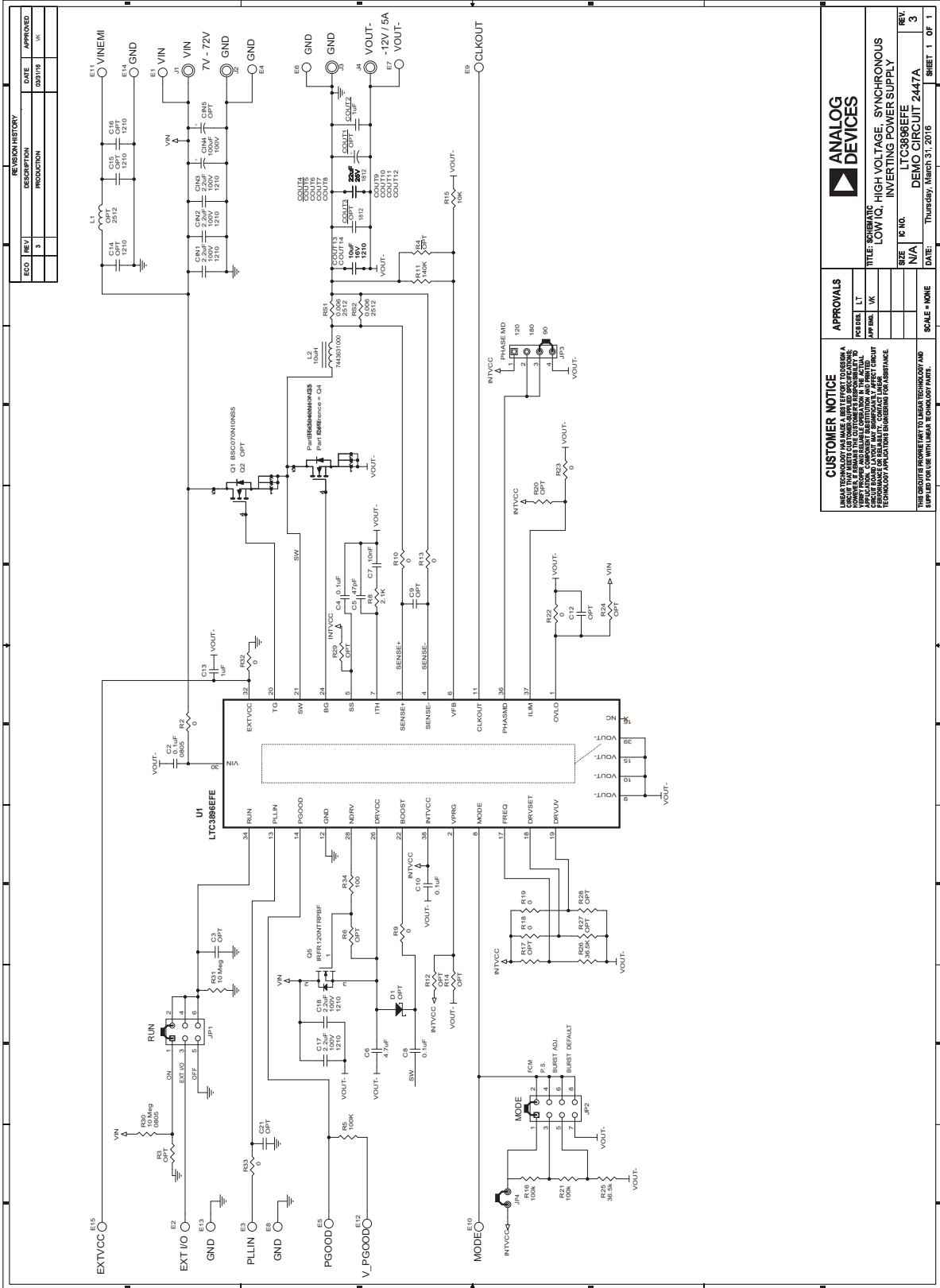
ITEM	QTY	REFERENCE	PART DESCRIPTION	MANUFACTURER/PART NUMBER
Required Circuit Components				
1	5	CIN1, CIN2, CIN3, C17, C18	CAP, X7R, 2.2 μ F, 100V, 10%, 1210	AVX, 12101C225KAT2A
2	1	CIN4	CAP, 100 μ F, 100V, 20%	UNITED CHEMI-CON, EMVY101ARA101MKEOS
3	8	COUT3–COUT10	CAP, X7R, 22 μ F, 25V, 1812	TDK, C4532X7R1E226M250KC
4	1	COUT2	CAP, X7R, 1 μ F, 50V, 10%, 1210	TDK, C3225X7R1H105K
5	2	COUT13, COUT14	CAP, X5R, 10 μ F, 16V, 10%, 1210	AVX, 1210YD106KAT2A
6	1	C2	CAP, X7T, 0.1 μ F, 200V, 10%, 0805	TDK, CGJ4J3X7T2D104K125AA
7	3	C4, C8, C10	CAP, X7R, 0.1 μ F, 25V, 10%, 0603	TDK, C1608X7R1E104K
8	1	C5	CAP, X7R, 47pF, 50V, 10%, 0603	KEMET, C0603X470K5RACTU
9	1	C6	CAP, X5R , 4.7 μ F, 16V, 10%, 0603	TDK, C1608X5R1C475K080AC
10	1	C7	CAP, X7R, 10nF, 50V, 10%, 0603	KEMET, C0603C103K5RACTU
11	1	C13	CAP, X7R, 1 μ F, 50V, 10%, 0603	TAIYO YUDEN, UMK107AB7105KA-T
12	1	L2	INDUCTOR, POWER, 10 μ H	WURTH ELEKTRONIK, 7443631000
13	1	Q1	XSTR, N-CHANNEL, DMOS FET, LPAK	INFINEON, BSC070N10NS5
14	1	Q3	XSTR, N-CHANNEL, DMOS FET, LPAK	INFINEON, BSC040N10NS5
15	1	Q5	MOSFET, N-CHANNEL, 100V, TO252	INFINEON, IRFR120NTRPBF
16	2	RS1, RS2	RES, 0.006 Ω 1% 1/4W, 2512	VISHAY, WSL25126L000FEA
17	10	R2, R9, R10, R13, R18, R19	RES., 0 Ω , 1/16W, 0603	VISHAY, CRCW06030000Z0EA
18		R22, R23, R32, R33		
19	3	R5, R16, R21	RES., 100k, 1/16W, 1% , 0603	VISHAY, CRCW0603100KFKEA
20	1	R8	RES., 2.1k, 1/16W, 1% , 0603	VISHAY, CRCW06032K1FKEA
21	1	R15	RES., 10k, 1/16W, 1% , 0603	VISHAY, CRCW060310K0FKEA
22	1	R11	RES., 140k, 1/16W, 1%, 0603	VISHAY, CRCW0603140KFKEA
23	2	R25, R26	RES., 36.5k, 1/16W, 1% , 0603	VISHAY, CRCW060336K5FKEA
24	1	R30	RES., 10M, 1/8W, 5%, 0805	VISHAY, CRCW080510M0JNEA
25	1	R31	RES., 10M, 1/10W, 5%, 0603	VISHAY, CRCW060310M0JNEA
26	1	R34	RES., 100, 1/10W, 1%, 0603	VISHAY, CRCW0603100RFKEA
27	1	U1	IC, LTC3896EFE	LINEAR TECH. LTC3896EFE#PBF
Additional Demo Board Circuit Components				
		C3, C9, C11, C12, C21	CAP, OPT, 0603	OPT
		CIN5	CAP, ALUM	OPT
		C14, C15, C16	CAP, OPT, 1210	OPT
		COUT1	CAP, ALUM	OPT
		COUT11, COUT12	CAP, OPT, 1812	OPT
		D1	DIODE, OPT, SOD123	OPT
		L1	INDUCTOR, OPT, 2512	OPT
		Q2, Q4	XSTR, OPT, LPAK	OPT
		R3, R6, R12, R14, R17, R20, R24, R27, R28, R29	RES., OPT 0603	OPT

DEMO MANUAL DC2447A

PARTS LIST

ITEM	QTY	REFERENCE	PART DESCRIPTION	MANUFACTURER/PART NUMBER
Hardware: For Demo Board Only				
	15	E1-E15	TESTPOINT, TURRET, 0.095"	MILL-MAX, 2501-2-00-80-00-00-07-0
	1	JP1	CONN., HEADER, 2X3, 2mm	WURTH ELEKTRONIK, 620 006 211 21
	1	JP2	CONN., HEADER, 2X4, 2mm	WURTH ELEKTRONIK, 620 008 211 21
	1	JP3	CONN., HEADER, 1X4, 2mm	WURTH ELEKTRONIK, 620 004 111 21
	1	JP4	CONN., HEADER, 1X2, 2mm	WURTH ELEKTRONIK, 620 002 111 21
	4	XJP1, XJP2, XJP3, XJP4	SHUNT, 2mm	WURTH ELEKTRONIK, 608 002 134 21
	4	J1, J2, J3, J4	JACK, BANANA	KEYSTONE, 575-4

SCHEMATIC DIAGRAM



REVISION HISTORY		
ECO	REV	DESCRIPTION
	3	PRODUCTION
		DATE APPROVED
		03/31/16
		JK

APPROVALS	
DESIGNED BY	LT
APPROVED BY	JK
CUSTOMER NOTICE THIS CIRCUIT IS PROVIDED AS AN EXAMPLE OF HOW TO USE THE PRODUCT. IT IS NOT INTENDED TO BE USED IN ANY OTHER APPLICATION. THE USER SHALL BE RESPONSIBLE FOR VERIFYING THE ACTUAL PERFORMANCE OF THE CIRCUIT IN THEIR APPLICATION. THE USER SHALL BE RESPONSIBLE FOR OBTAINING NECESSARY APPROVALS FROM THE CUSTOMER FOR ANY APPLICATIONS.	
CUSTOMER NOTICE THIS CIRCUIT IS PROVIDED AS AN EXAMPLE OF HOW TO USE THE PRODUCT. IT IS NOT INTENDED TO BE USED IN ANY OTHER APPLICATION. THE USER SHALL BE RESPONSIBLE FOR VERIFYING THE ACTUAL PERFORMANCE OF THE CIRCUIT IN THEIR APPLICATION. THE USER SHALL BE RESPONSIBLE FOR OBTAINING NECESSARY APPROVALS FROM THE CUSTOMER FOR ANY APPLICATIONS.	
ANALOG DEVICES LOW I _Q , HIGH VOLTAGE, SYNCHRONOUS INVERTING POWER SUPPLY	
IC NO.	LTC3885EFE
DEMO CIRCUIT	2447A
REV.	3
DATE	Thursday, March 31, 2016
SHEET	1 OF 1

REVISION HISTORY

REV	DATE	DESCRIPTION	PAGE NUMBER
0	2016	Initial Release	1-11
A	08/23	Updated Performance Summary	1



ESD Caution

ESD (electrostatic discharge) sensitive device. Charged devices and circuit boards can discharge without detection. Although this product features patented or proprietary protection circuitry, damage may occur on devices subjected to high energy ESD. Therefore, proper ESD precautions should be taken to avoid performance degradation or loss of functionality.

Legal Terms and Conditions

By using the evaluation board discussed herein (together with any tools, components documentation or support materials, the "Evaluation Board"), you are agreeing to be bound by the terms and conditions set forth below ("Agreement") unless you have purchased the Evaluation Board, in which case the Analog Devices Standard Terms and Conditions of Sale shall govern. Do not use the Evaluation Board until you have read and agreed to the Agreement. Your use of the Evaluation Board shall signify your acceptance of the Agreement. This Agreement is made by and between you ("Customer") and Analog Devices, Inc. ("ADI"), with its principal place of business at One Technology Way, Norwood, MA 02062, USA. Subject to the terms and conditions of the Agreement, ADI hereby grants to Customer a free, limited, personal, temporary, non-exclusive, non-sublicensable, non-transferable license to use the Evaluation Board FOR EVALUATION PURPOSES ONLY. Customer understands and agrees that the Evaluation Board is provided for the sole and exclusive purpose referenced above, and agrees not to use the Evaluation Board for any other purpose. Furthermore, the license granted is expressly made subject to the following additional limitations: Customer shall not (i) rent, lease, display, sell, transfer, assign, sublicense, or distribute the Evaluation Board; and (ii) permit any Third Party to access the Evaluation Board. As used herein, the term "Third Party" includes any entity other than ADI, Customer, their employees, affiliates and in-house consultants. The Evaluation Board is NOT sold to Customer; all rights not expressly granted herein, including ownership of the Evaluation Board, are reserved by ADI. CONFIDENTIALITY. This Agreement and the Evaluation Board shall all be considered the confidential and proprietary information of ADI. Customer may not disclose or transfer any portion of the Evaluation Board to any other party for any reason. Upon discontinuation of use of the Evaluation Board or termination of this Agreement, Customer agrees to promptly return the Evaluation Board to ADI. ADDITIONAL RESTRICTIONS. Customer may not disassemble, decompile or reverse engineer chips on the Evaluation Board. Customer shall inform ADI of any occurred damages or any modifications or alterations it makes to the Evaluation Board, including but not limited to soldering or any other activity that affects the material content of the Evaluation Board. Modifications to the Evaluation Board must comply with applicable law, including but not limited to the RoHS Directive. TERMINATION. ADI may terminate this Agreement at any time upon giving written notice to Customer. Customer agrees to return to ADI the Evaluation Board at that time. LIMITATION OF LIABILITY. THE EVALUATION BOARD PROVIDED HEREUNDER IS PROVIDED "AS IS" AND ADI MAKES NO WARRANTIES OR REPRESENTATIONS OF ANY KIND WITH RESPECT TO IT. ADI SPECIFICALLY DISCLAIMS ANY REPRESENTATIONS, ENDORSEMENTS, GUARANTEES, OR WARRANTIES, EXPRESS OR IMPLIED, RELATED TO THE EVALUATION BOARD INCLUDING, BUT NOT LIMITED TO, THE IMPLIED WARRANTY OF MERCHANTABILITY, TITLE, FITNESS FOR A PARTICULAR PURPOSE OR NON-INFRINGEMENT OF INTELLECTUAL PROPERTY RIGHTS. IN NO EVENT WILL ADI AND ITS LICENSORS BE LIABLE FOR ANY INCIDENTAL, SPECIAL, INDIRECT, OR CONSEQUENTIAL DAMAGES RESULTING FROM CUSTOMER'S POSSESSION OR USE OF THE EVALUATION BOARD, INCLUDING BUT NOT LIMITED TO LOST PROFITS, DELAY COSTS, LABOR COSTS OR LOSS OF GOODWILL. ADI'S TOTAL LIABILITY FROM ANY AND ALL CAUSES SHALL BE LIMITED TO THE AMOUNT OF ONE HUNDRED US DOLLARS (\$100.00). EXPORT. Customer agrees that it will not directly or indirectly export the Evaluation Board to another country, and that it will comply with all applicable United States federal laws and regulations relating to exports. GOVERNING LAW. This Agreement shall be governed by and construed in accordance with the substantive laws of the Commonwealth of Massachusetts (excluding conflict of law rules). Any legal action regarding this Agreement will be heard in the state or federal courts having jurisdiction in Suffolk County, Massachusetts, and Customer hereby submits to the personal jurisdiction and venue of such courts. The United Nations Convention on Contracts for the International Sale of Goods shall not apply to this Agreement and is expressly disclaimed.