



980600403 – LMV7231 Evaluation Board User Guide

This evaluation board contains the LMV7231 Hex Window Comparator and allows for evaluation of the device.

Connectors, Jumpers, Test Points

Power Supply

There are two test points labeled V+, and GND to power the evaluation board. A single supply per the LMV7231 Datasheet Operating Ratings can be used.

Signal Connectors

There are three connectors for signals.

J1 is a 2x7 100mil Header for the monitored voltage signals.

J2 is a 2x14 100mil Header for the input signals.

J3 is a 2x7 100mil Header for the output signals.

Jumpers

The demo board has 3 jumpers.

J4 connects the AOSEL pin of the LMV7231 to either VPU or GND. Default AOSEL connected to GND.

J5 connects the COPOL pin of the LMV7231 to either VPU or GND. Default COPOL connected to GND.

A 3rd jumper can be used at J1 to connect V+ to VPU. Default V+ connected to VPU.

Using the board

Power Supply Setup

Connect a single supply per the Datasheet Operating Ratings to the V+ and GND test points.

Monitored Voltage Signals

The monitored voltage signals (VIN1, VIN2, VIN3, VIN4, VIN5, VIN6) are connected to the board using jumper J1.

Input Signals, AOSEL, and COPOL

Access directly to the LMV7231 window comparator inputs (+IN1, -IN1, +IN2, -IN2, etc.) and AOSEL and COPOL are available at jumper J2.

Output Signals

The comparator output signals (CO1, CO2, CO3, CO4, CO5, CO6, AO) are taken from jumper J3.

3 Resistor Voltage Divider

No 3 resistor voltage divider (R7, R8, R9) is populated on Channel 1 to allow customer the flexibility to select resistors in order set their own voltage detection window. See the 3 RESISTOR VOLTAGE DIVIDER SELECTION section of the LMV7231 datasheet for proper resistor selection. Remaining channels have their 3 resistor voltage dividers populated to detect the windows in the table below and are optimized for a signal rising into and out of the voltage detection window.

Table 1. Voltage Detection Windows

Channel	Window	Min	Max
1	Open	NA	NA
2	3.3V +/-5%	3.135V	3.465V
3	2.5V +/- 5%	2.375V	2.625V
4	1.8V +/- 5%	1.71V	1.89V
5	1.2V +/- 5%	1.14V	1.26V
6	1.0V +/- 5%	0.95V	1.05V

Output Pull-up Resistors and Capacitive Loads

Output pull-up resistors (R19, R20, R21, R22, R23, R24, R25) and capacitive load (C2, C3, C4, C5, C6, C7, C8) can be adjusted to meet customer evaluation requirements. By default pull-up resistors are 10 k Ω and capacitive load is unpopulated.

VPU

VPU is the output pull-up resistor voltage and can be pulled up to any voltage within the Abs Max ratings of the LMV7231. By default VPU is set to V+ with a jumper at J1.

AOSEL

The state of AOSEL pin determines whether the AO pin is active on an over-voltage or under-voltage event. When tied LOW the AO output will be active upon an over-voltage event. By default AOSEL is set LOW with jumper J4 shorting AOSEL to GND.

COPOL

The state of the COPOL pin determines whether the CO1-CO6 pins are active "HIGH" or "LOW". When tied LOW the CO1-CO6 outputs will go LOW to indicate an out of window comparison. By default COPOL is set LOW with jumper J5 shorting COPOL to GND.

AO and Optional AO LED

The AO output is the ANDED combination of either the overvoltage comparator outputs or the under-voltage comparator outputs and is controlled by the state of the AOSEL. AO pin is active "LOW". Footprint for an optional AO LED, D1, and current limiting resistor, R26, have been included on the board to allow a user to visually indicate an out of window event. See BOM for recommended components.

Board Layout, Schematic, and BOM

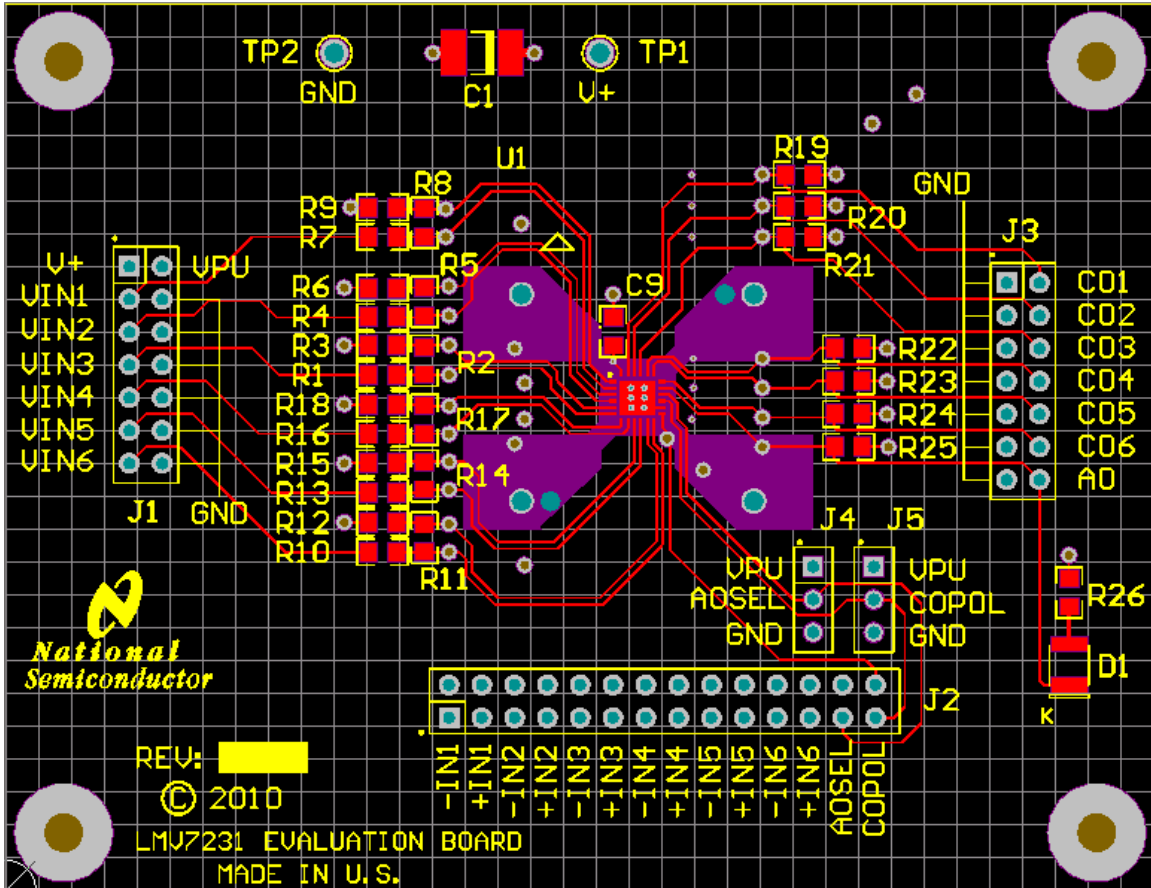


Figure 1. Top of Evaluation Board

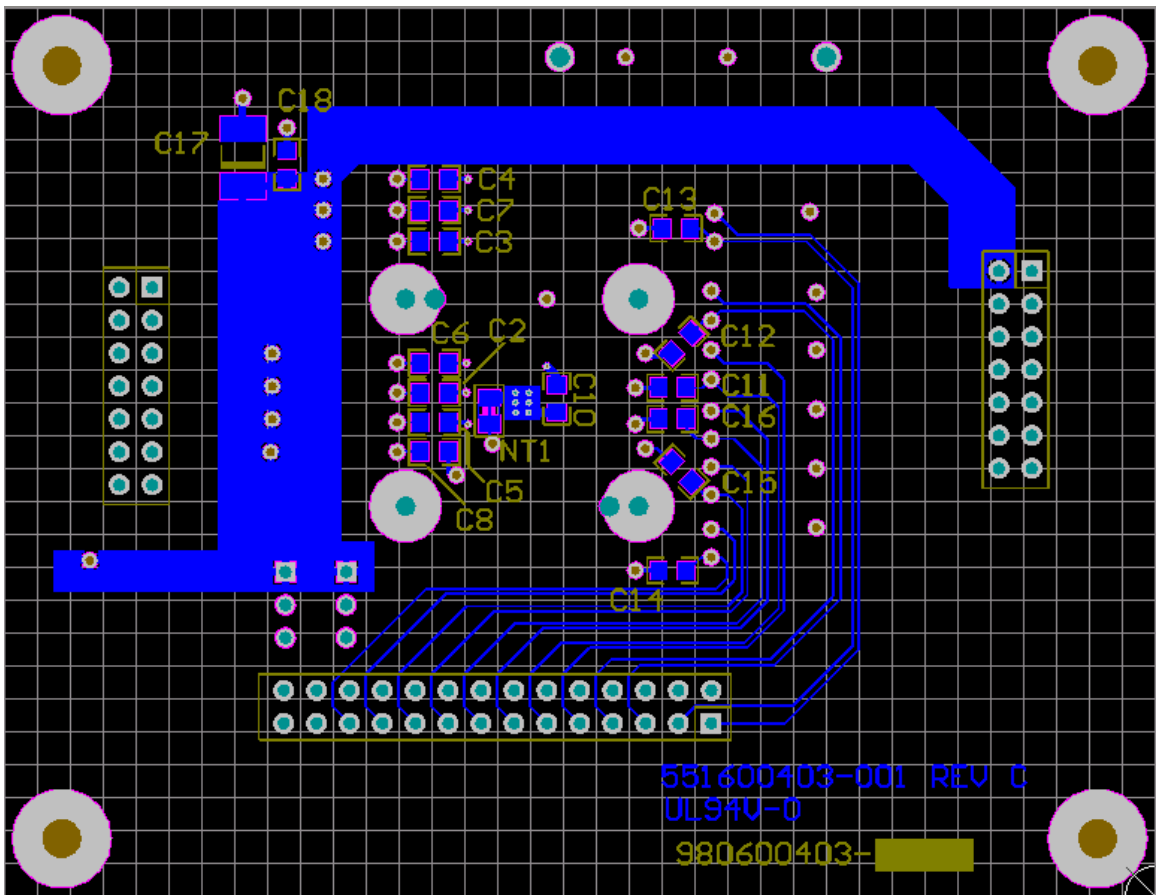


Figure 2. Bottom of Evaluation Board

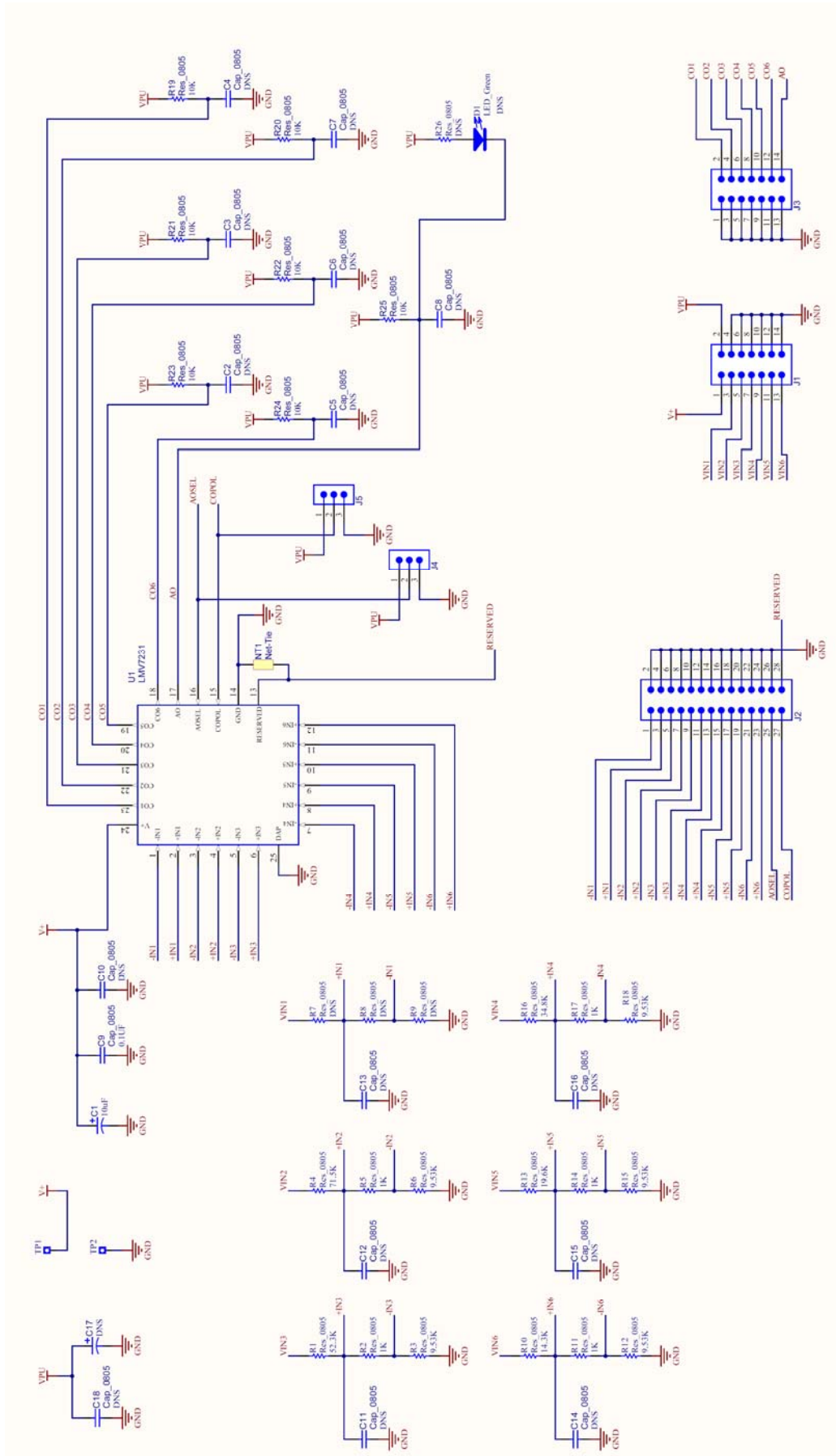


Figure 3. Schematic

Table 2. BOM

Item	Designator	Description	Manufacturer	Manufacturer P/N	Quantity
1	C1	10uF Tantalum EIA-D	Vishay/Sprague	293D106X0025C2TE3	1
2	C2, C3, C4, C5, C6, C7, C8	DNS			0
3	C11, C12, C13, C14, C15, C16	DNS			0
4	C9	0.1uF 0805	Kemet	C0805C104J5RACTU	1
5	C10, C17, C18	DNS			0
6	J1, J3	Header, 100mil, 2x7, Tin	Sullins	PEC36DACN	1
7	J2	Header, 100mil, 2x14, Tin			
8	J4, J5	Header, TH, 100mil, 1x3, Tin	Sullins	PEC36SAAN	1
9	R1	52.3 kohm Resistor, SMT, 0.1% 0805	MULTICOMP	MCTC0525B5232T5E	1
10	R4	71.5 kohm Resistor, SMT, 0.1% 0805	MULTICOMP	MCTC0525B7152T5E	1
11	R7, R8, R9	DNS			0
12	R10	14.3 kohm Resistor, SMT, 0.1% 0805	Susumu	RG2012P-1432-B-T5	1
13	R13	19.6 kohm Resistor, SMT, 0.1% 0805	MULTICOMP	MCTC0525B1962T5E	1
14	R16	34.8 kohm Resistor, SMT, 0.1% 0805	Susumu	RG2012P-3482-B-T5	1
15	R2, R5, R11, R14, R17	1.0 kohm Resistor, SMT, 0.1% 0805	Susumu	RG2012P-102-B-T5	5
16	R3, R6, R12, R15, R18	9.53 kohm Resistor, SMT, 0.1% 0805	Susumu	RG2012P-9531-B-T5	5
17	R19, R20, R21, R22, R23, R24, R25	10 kohm Resistor, SMT, 0805	Vishay/Dale	CRCW080510k0FKEA	7
18	R26	DNS [1.0 kohm Resistor, SMT, 0.1% 0805]	Susumu	RG2012P-102-B-T5	0
19	TP1, TP2	TERMINAL TURRET DBL .084"L	Keystone	1593-2	2
20	D1	DNS [LED Domed Green Clear 1210 SMD]	Lite-On Inc	LTST-C930GKT	0
21	U1	LMV7231 Hex Window Comparator	National Semi	LMV7231SQ	1
22	Shunts	CONN SHUNT CLOSED TOP .100 TIN	Molex	15-38-1026	3

IMPORTANT NOTICE

Texas Instruments Incorporated and its subsidiaries (TI) reserve the right to make corrections, modifications, enhancements, improvements, and other changes to its products and services at any time and to discontinue any product or service without notice. Customers should obtain the latest relevant information before placing orders and should verify that such information is current and complete. All products are sold subject to TI's terms and conditions of sale supplied at the time of order acknowledgment.

TI warrants performance of its hardware products to the specifications applicable at the time of sale in accordance with TI's standard warranty. Testing and other quality control techniques are used to the extent TI deems necessary to support this warranty. Except where mandated by government requirements, testing of all parameters of each product is not necessarily performed.

TI assumes no liability for applications assistance or customer product design. Customers are responsible for their products and applications using TI components. To minimize the risks associated with customer products and applications, customers should provide adequate design and operating safeguards.

TI does not warrant or represent that any license, either express or implied, is granted under any TI patent right, copyright, mask work right, or other TI intellectual property right relating to any combination, machine, or process in which TI products or services are used. Information published by TI regarding third-party products or services does not constitute a license from TI to use such products or services or a warranty or endorsement thereof. Use of such information may require a license from a third party under the patents or other intellectual property of the third party, or a license from TI under the patents or other intellectual property of TI.

Reproduction of TI information in TI data books or data sheets is permissible only if reproduction is without alteration and is accompanied by all associated warranties, conditions, limitations, and notices. Reproduction of this information with alteration is an unfair and deceptive business practice. TI is not responsible or liable for such altered documentation. Information of third parties may be subject to additional restrictions.

Resale of TI products or services with statements different from or beyond the parameters stated by TI for that product or service voids all express and any implied warranties for the associated TI product or service and is an unfair and deceptive business practice. TI is not responsible or liable for any such statements.

TI products are not authorized for use in safety-critical applications (such as life support) where a failure of the TI product would reasonably be expected to cause severe personal injury or death, unless officers of the parties have executed an agreement specifically governing such use. Buyers represent that they have all necessary expertise in the safety and regulatory ramifications of their applications, and acknowledge and agree that they are solely responsible for all legal, regulatory and safety-related requirements concerning their products and any use of TI products in such safety-critical applications, notwithstanding any applications-related information or support that may be provided by TI. Further, Buyers must fully indemnify TI and its representatives against any damages arising out of the use of TI products in such safety-critical applications.

TI products are neither designed nor intended for use in military/aerospace applications or environments unless the TI products are specifically designated by TI as military-grade or "enhanced plastic." Only products designated by TI as military-grade meet military specifications. Buyers acknowledge and agree that any such use of TI products which TI has not designated as military-grade is solely at the Buyer's risk, and that they are solely responsible for compliance with all legal and regulatory requirements in connection with such use.

TI products are neither designed nor intended for use in automotive applications or environments unless the specific TI products are designated by TI as compliant with ISO/TS 16949 requirements. Buyers acknowledge and agree that, if they use any non-designated products in automotive applications, TI will not be responsible for any failure to meet such requirements.

Following are URLs where you can obtain information on other Texas Instruments products and application solutions:

Products

Audio	www.ti.com/audio
Amplifiers	amplifier.ti.com
Data Converters	dataconverter.ti.com
DLP® Products	www.dlp.com
DSP	dsp.ti.com
Clocks and Timers	www.ti.com/clocks
Interface	interface.ti.com
Logic	logic.ti.com
Power Mgmt	power.ti.com
Microcontrollers	microcontroller.ti.com
RFID	www.ti-rfid.com
OMAP Mobile Processors	www.ti.com/omap
Wireless Connectivity	www.ti.com/wirelessconnectivity

Applications

Automotive and Transportation	www.ti.com/automotive
Communications and Telecom	www.ti.com/communications
Computers and Peripherals	www.ti.com/computers
Consumer Electronics	www.ti.com/consumer-apps
Energy and Lighting	www.ti.com/energy
Industrial	www.ti.com/industrial
Medical	www.ti.com/medical
Security	www.ti.com/security
Space, Avionics and Defense	www.ti.com/space-avionics-defense
Video and Imaging	www.ti.com/video

TI E2E Community Home Page

e2e.ti.com

Mailing Address: Texas Instruments, Post Office Box 655303, Dallas, Texas 75265
Copyright © 2012, Texas Instruments Incorporated