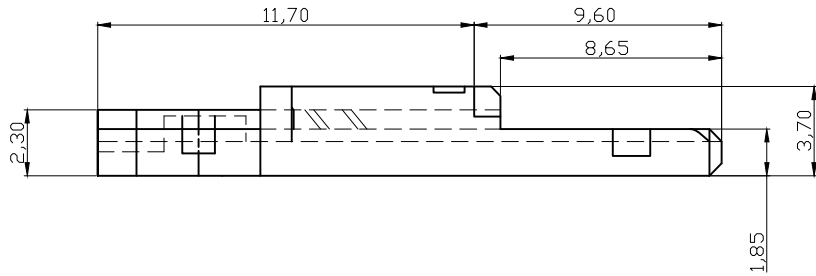
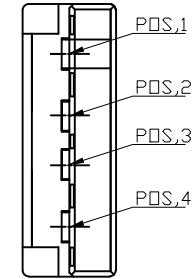
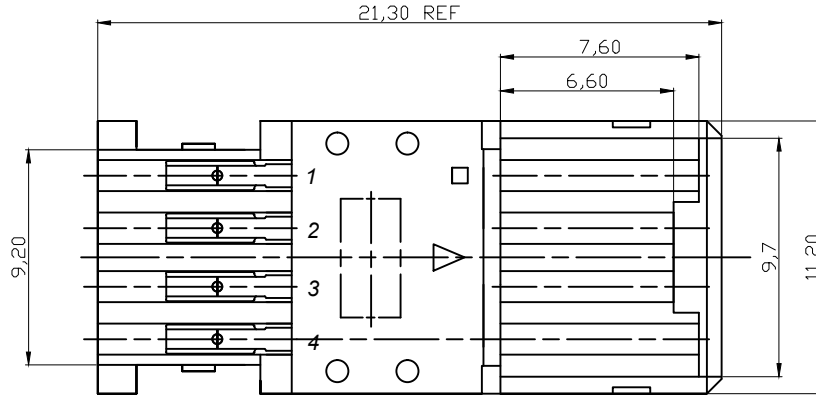
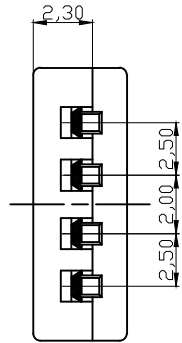


⑥ **USB2.0 COMPLIANT**



NOTE:
 1.MATERIALS:
 INSULATION:PBT WITH 30%GLASS FILLED , UL94V-0 RADTED
 COLOR:WHITE
 CONTACT:COPPER ALLOY
 PREPLATEIVE GOLD FLASH

RoHS compliant
 Unit:mm

| Scale | Free | ⑦ | Correct presentation of shell finish | 21.02.2019 | Xavier | | Date | Name | Customer-No. |
|------------------|-------|-----|--------------------------------------|------------|--------|----------------------------------|------------|----------------|-------------------------------------|
| TOLERANCE | | ⑥ | Update | 27.08.2013 | Winnie | Drawn | 20.04.2004 | Hellwig | ASSMANN WSW-No. A-USBPA-N |
| .XX | ±0.10 | ⑤ | Add assembly instructions | 11.06.2012 | Lucas | Approved | 27.08.2013 | Winnie | |
| .X | ±0.20 | ④ | Add Applicable cable Spec. | 20.03.2012 | Lucas | | | | |
| X. | ±0.50 | ③ | Update | 04.08.2011 | Jason | ASSMANN WSW components | | | |
| XX. | ±1 | ② | Update | 14.07.2009 | Rale | | | | Drawing-No. |
| DIM | TOL | ① | Modification | Date | Name | Replace | | Sheet 1 / 5 | |
| Angle | TOL | Id. | | | | | | | |

1

2

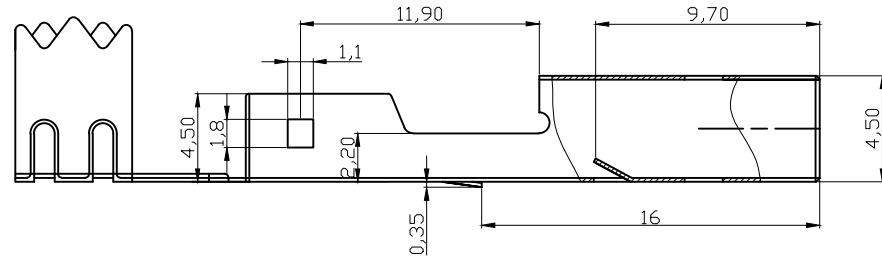
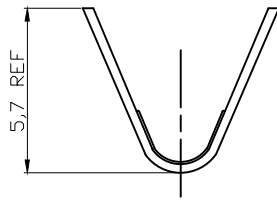
3

4

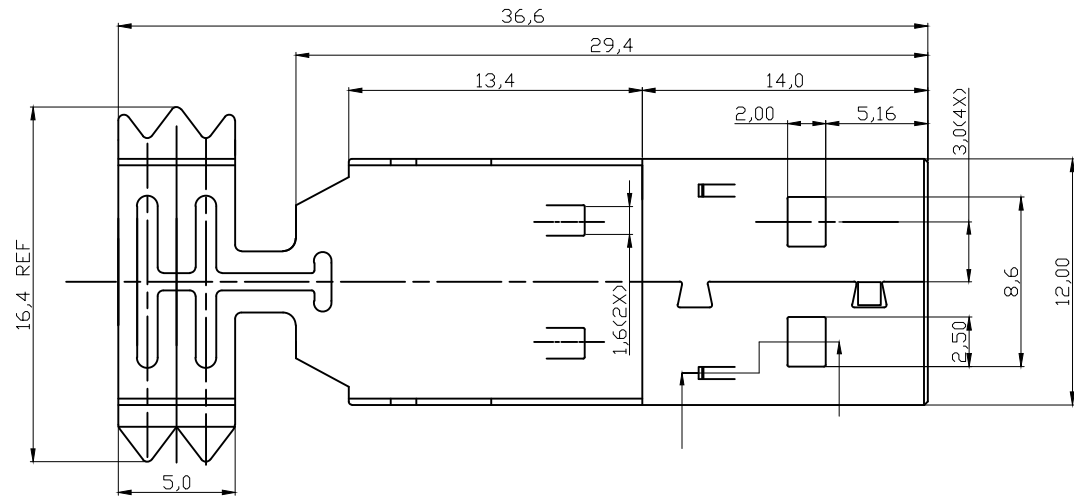
5

6

7



SECTION A-A



NOTE:

1.0.MATERIALS:

1.1.COLD ROLL STEEL. t=0.35mm

⑦ 2.0.FINISHES: 3.0um-5.0um NICKEL OVER 5.0um Min.COPPER

④ 3.0. APPLICATION CABLE SPEC:

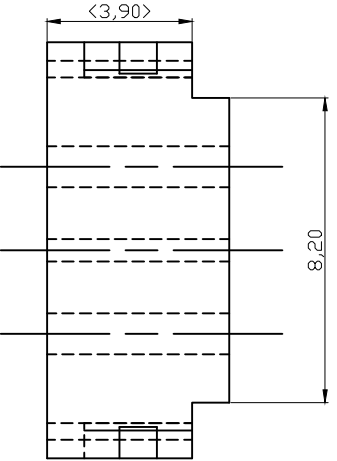
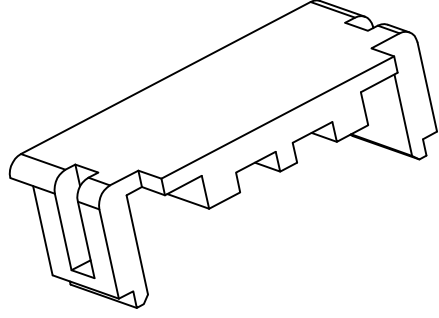
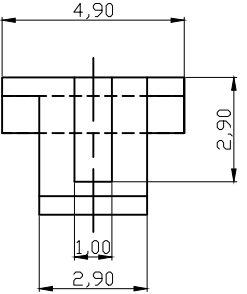
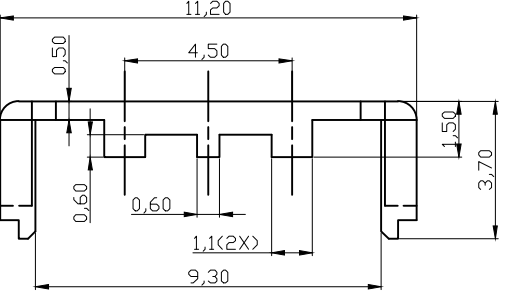
| UL CSA Type | AWG Signal wires Power wires | Jacket OD. | Cable length(max.) |
|-----------------|---------------------------------|------------|--------------------|
| UL CM UL FT4 | 28AWG x 1T.P. 28AWG x 2Cores | 4.2mm | 0.81m |
| | 28AWG x 1T.P. 26AWG x 2Cores | 4.4mm | 1.31m |
| | 28AWG x 1T.P. 24AWG x 2Cores | 4.7mm | 2.08m |
| | 28AWG x 1T.P. 22AWG x 2Cores | 5.0mm | 3.33m |
| | 28AWG x 1T.P. 20AWG x 2Cores | 5.0mm | 5.00m |

RoHS compliant


Unit:mm

| Scale | Free | ⑦ | Correct presentation of shell finish | 21.02.2019 | Xavier | | Date | Name | Customer-No. |
|------------------|-------|-----|--------------------------------------|------------|--------|----------------------------------|----------------|---------|-------------------------------------|
| TOLERANCE | | ⑥ | Update | 27.08.2013 | Winnie | Drawn | 20.04.2004 | Hellwig | ASSMANN WSW-No. A-USBPA-N |
| .XX | ±0.10 | ⑤ | Add assembly instructions | 11.06.2012 | Lucas | Approved | 27.08.2013 | Winnie | |
| .X | ±0.20 | ④ | Add Applicable cable Spec. | 20.03.2012 | Lucas | | | | |
| X. | ±0.50 | ③ | Update | 04.08.2011 | Jason | ASSMANN WSW components | | | Drawing-No. |
| XX. | ±1 | ② | Update | 14.07.2009 | Rale | | | | ASS 1518D CO |
| DIM | TOL | ① | Modification | Date | Name | Replace | Sheet 2 / 5 | | |
| Angle | TOL | Id. | | | | | | | |



| | | | | | | | | |
|---|--|---|---|---|---|---|---|---|
| | 1 | 2 | 3 | 4 | 5 | 6 | 7 | |
| A |  | |  | | | | | A |
| B | | | | | | | | B |
| C | | | | | | | | C |
| D | | | | | | | | D |
| E |  | |  | | | | | E |
| F | | | | | | | | F |
| G | <p>RoHS compliant Unit:mm</p> | | | | | | | G |
| H | | | | | | | | H |
| | 1 | 2 | 3 | 4 | 5 | 6 | 7 | |

NOTE:
1.MATERIAL:PBT WITH 30%GLASS FILLED,UL 90V-0 RATED

| | | | | | | | | | |
|-----------|-------|---|--------------------------------------|--------------|--------|---|------------|----------------|-------------------------------------|
| Scale | Free | ⑦ | Correct presentation of shell finish | 21.02.2019 | Xavier | | Date | Name | Customer-No. |
| TOLERANCE | | ⑥ | Update | 27.08.2013 | Winnie | Drawn | 20.04.2004 | Hellwig | ASSMANN WSW-No. A-USBPA-N |
| .XX | ±0.10 | ⑤ | Add assembly instructions | 11.06.2012 | Lucas | Approved | 27.08.2013 | Winnie | |
| .X | ±0.20 | ④ | Add Applicable cable Spec. | 20.03.2012 | Lucas | | | | |
| X. | ±0.50 | ③ | Update | 04.08.2011 | Jason |  | | | Drawing-No. |
| XX. | ±1 | ② | Update | 14.07.2009 | Rale | | | | |
| DIM | TOL | ① | Id. | Modification | Date | Name | Replace | Sheet 3 / 5 | |
| Angle | TOL | | | | | | | | |

1

2

3

4

5

6

7

A

A

B

B

C

C

D

D

E

E

F

F

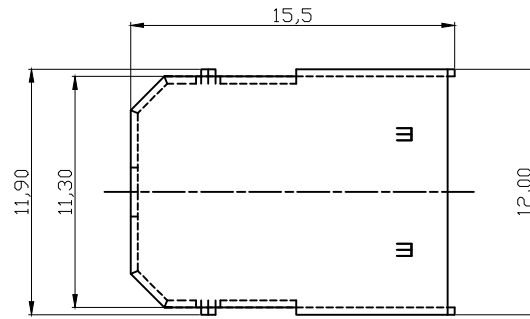
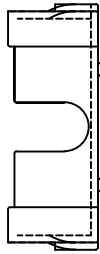
G

G

H

H

VIEW A

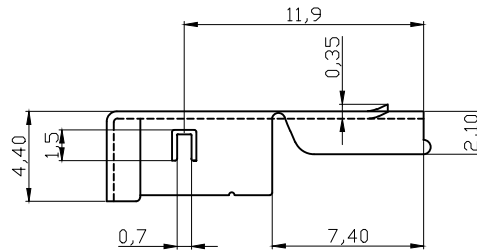
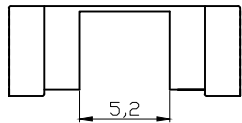


NOTE:

1.0.MATERIALS:


1.1.COLD ROLL STEEL. t=0.35mm

⑦ 2.0.FINISHES: 3.0um-5.0um NICKEL OVER 5.0um Min.COPPER



RoHS compliant

Unit:mm

| Scale | Free | ⑦ | Correct presentation of shell finish | 21.02.2019 | Xavier | | Date | Name | Customer-No. |
|-----------|-------|-----|--------------------------------------|------------|--------|---|------------|---------|-------------------------------------|
| TOLERANCE | | ⑥ | Update | 27.08.2013 | Winnie | Drawn | 20.04.2004 | Hellwig | ASSMANN WSW-No. A-USBPA-N |
| .XX | ±0.10 | ⑤ | Add assembly instructions | 11.06.2012 | Lucas | Approved | 27.08.2013 | Winnie | |
| .X | ±0.20 | ④ | Add Applicable cable Spec. | 20.03.2012 | Lucas | | | | |
| XX. | ±0.50 | ③ | Update | 04.08.2011 | Jason |  | | | Drawing-No. |
| DIM | TOL | ② | Update | 14.07.2009 | Rale | | | | ASS 1518D CO |
| Angle | TOL | Id. | Modification | Date | Name | Replace | Sheet | 4 / 5 | |

1

2

3

4

5

6

7

1

2

3

4

5

6

7

A

B

C

D

E

F

A

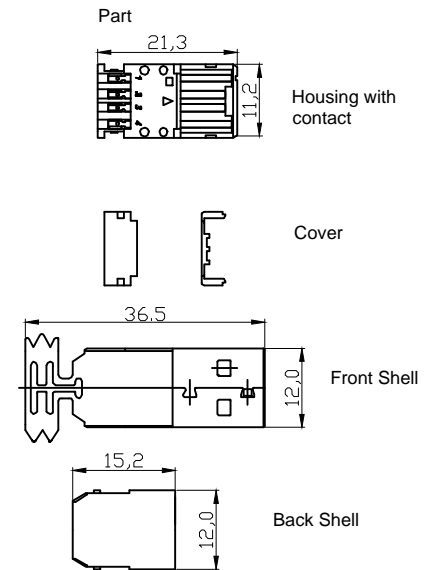
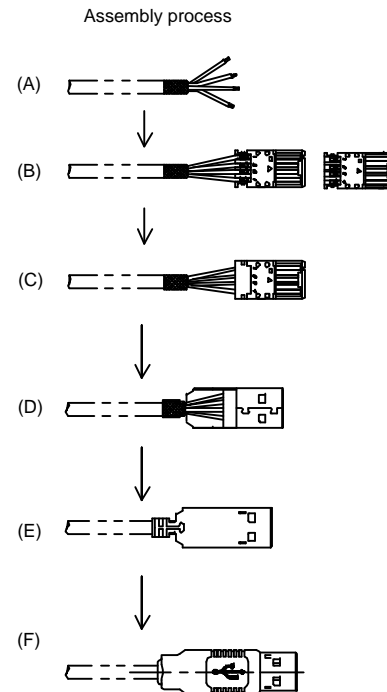
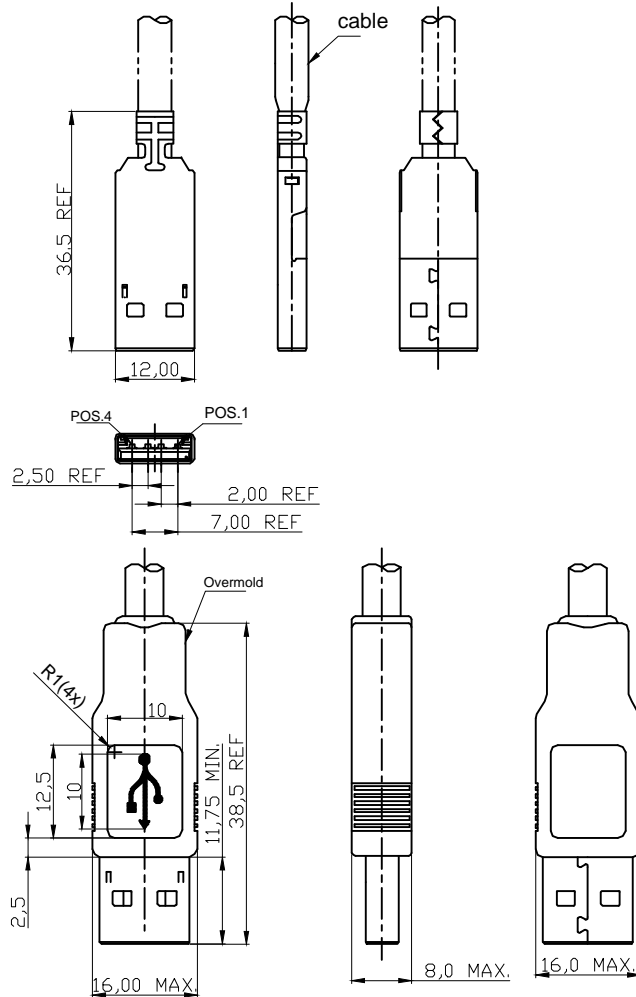
B

C

D

E

F



NOTES:

Rating:

Voltage: 30V AC (R.M.S)

Current: 1.5 Amps Maximum per contact at 30°C T-raise

Temperature: -55°C to +85°C

Electric Characteristic


Contact resistance: 30milliohms maximum initial

Insulation resistance: 1000 megohms minimum

Withstanding Volatge: 500 VAC at sea level

RoHS compliant

Unit:mm

| Scale | Free | ⑦ | Correct presentation of shell finish | 21.02.2019 | Xavier | | Date | Name | Customer-No. | | |
|-----------|-------|-----|--------------------------------------|------------|--------|---|------------|---------|-------------------------------------|-------|-------|
| TOLERANCE | | ⑥ | Update | 27.08.2013 | Winnie | Drawn | 20.04.2004 | Hellwig | ASSMANN WSW-No. A-USBPA-N | | |
| .XX | ±0.13 | ⑤ | Add assembly instructions | 11.06.2012 | Lucas | Approved | 27.08.2013 | Winnie | | | |
| .X | ±0.25 | ④ | Add Applicable cable Spec. | 20.03.2012 | Lucas | | | | | | |
| X. | ±0.38 | ③ | Update | 04.08.2011 | Jason |  | | | Drawing-No. | | |
| DIM | TOL | ② | Update | 14.07.2009 | Rale | | | | ASS 1518D CO | | rev07 |
| X° | ±3° | ① | Modification | Date | Name | | | | Replace | Sheet | |
| .X° | ±1.0° | | | | | | | | | 5 / 5 | |
| Angle | TOL | Id. | | | | | | | | | |

1

2

3

4

5

6

7

H

H