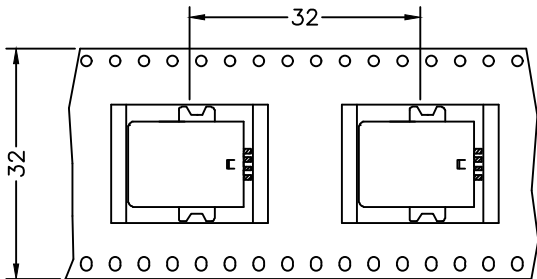
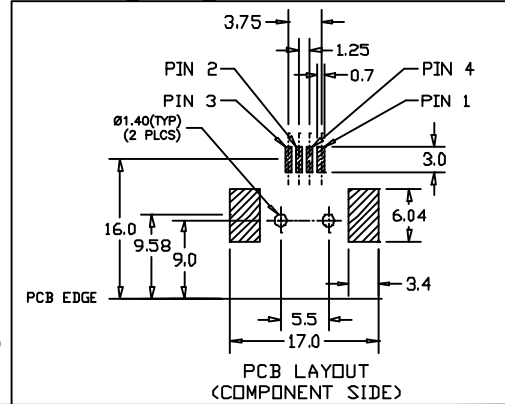
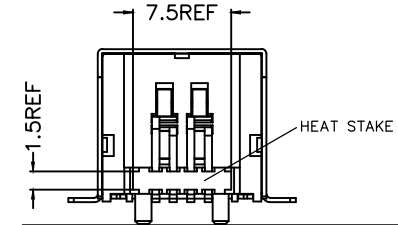
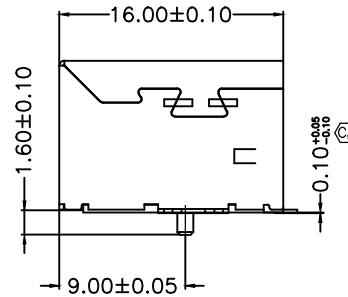
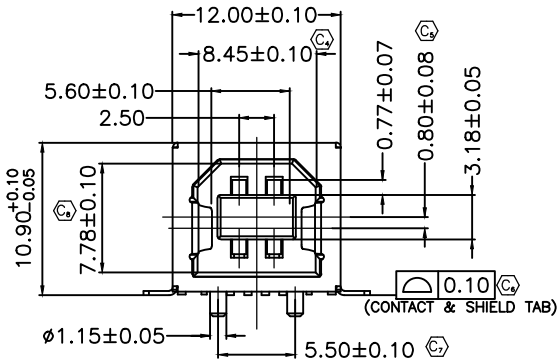
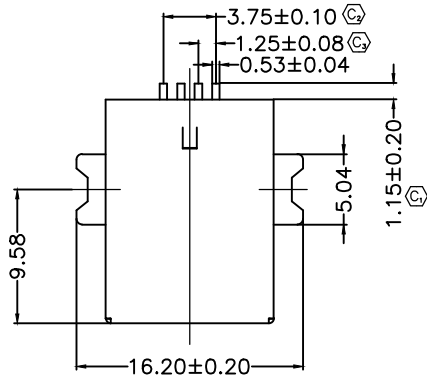
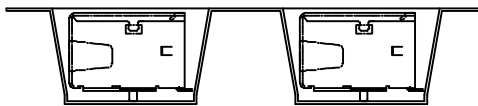


REVISION W

DO NOT SCALE FROM THIS PRINT



USER DIRECTION OF UNREELING —  
POCKET NOT DETAILED



USB-B-S-X-X-SM-X-XX

TYPE  
-B  
  
CONFIGURATION  
-S: SINGLE

PACKAGING  
BLANK: TRAY (SEE NOTES 4 & 5)  
-TR: TAPE & REEL (SEE NOTES 5 & 6)  
-FR: FULL REEL QTY TAPE & REEL (SEE NOTES 5 & 6)  
  
E & I OPTIONS  
-R: ROHS COMPLIANT-LEAD FREE WITH HIGH TEMP INSULATOR  
  
RA TERMINATION  
-SM: SURFACE MOUNT  
  
COLOR  
-B: BLACK  
-W: WHITE

PLATING  
-F: 1u" FLASH GOLD IN CONTACT AREA, MATTE TIN ON TAIL  
-S: 30u" SELECTIVE GOLD IN CONTACT AREA, MATTE TIN ON TAIL

NOTES:

1. Ⓢ REPRESENTS CRITICAL DIMENSION.
2. NOTE DELETED.
3. SHIELD PLATING TO HAVE A SLIGHT MATTE APPEARANCE.
4. TRAYS ARE STANDARD PACKAGING.
5. ORDERS WILL BE PACKAGED ACCORDING TO THE SAMTEC PACKAGING EFFICIENCY STANDARDS (SPES) FOUND ON WWW.SAMTEC.COM.
6. ATTACH LABEL TO EACH REEL.

UNLESS OTHERWISE SPECIFIED, DIMENSIONS ARE MILLIMETERS. TOLERANCES ARE:  
DECIMALS ANGLES

**PROPRIETARY NOTE**  
THIS DOCUMENT CONTAINS INFORMATION CONFIDENTIAL AND PROPRIETARY TO SAMTEC INC. AND SHALL NOT BE REPRODUCED OR TRANSFERRED TO OTHER DOCUMENTS OR DISCLOSED TO OTHERS OR USED FOR ANY PURPOSE OTHER THAN THAT FOR WHICH IT WAS OBTAINED WITHOUT THE EXPRESSED WRITTEN CONSENT OF SAMTEC INC.

**samtec**

520 PARK EAST BLVD. NEW ALBANY, IN 47150  
(812) 944-6733 P.O. BOX 1147 TWX: 810-540-4085

DO NOT SCALE DRAWING  
INSULATOR: PAST (RATED UL94V-0)  
CONTACT: PHOS BRONZE  
SHELL: STEEL/NICKEL PLATED  
MAX FLASH ALLOWED: .051  
MAX GATE VESTIGE: .051  
F:\DWG\EXISPROD\ASSEMBLY\0\USB\

SHEET SCALE: 1:2

DESCRIPTION:  
USB TYPE B RIGHT ANGLE SURFACE MOUNT

DWG. NO.  
USB-B-S-X-X-SM-X-XX

BY: J. Riley 02/06/04 SHEET 1 OF 1

CODE: 55322