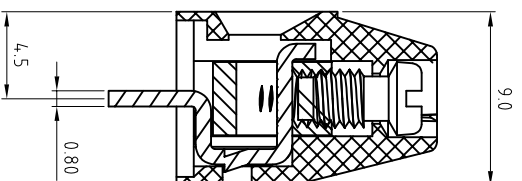
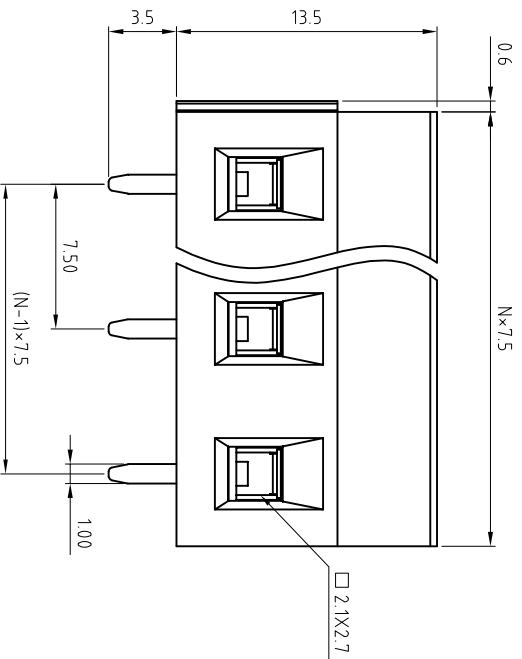



P.C.B. LAYOUT



- Material**
- Terminal body: Brass(CuZn)
  - Metal housing: Brass(CuZn)
  - Terminal screw: Steel Zinc plating "-" slot type
  - Contacts: Brass
  - Surface of solder tail: Tin plated
  - Insulator (housing): Thermoplastic (UL94V-0)Green
- Electrical** cULus/ FMKO
- Voltage rating: 300VAC / 300VAC
  - Current rating: 16A / 17.5A
  - Wire range: 0.5-1.5mm<sup>2</sup>
  - Solid wire(AWG): 12-28
  - Stranded wire(AWG): 12-28
  - Torque: 3.5lb-in / 0.4Nm
  - Screw: M3
  - Wire strip length: 6-7mm
  - Withstanding Voltage: 1.6KV / 2.5KV
  - Operating temperature: -30°C to +105°C
  - Soldering temperature: 250°C±10°C/5 Sec
  - Safety Approval:

N=Number of contacts

**RoHS compliant**



File No.: E349947

Scale	1:1	Customer-No.	
<b>TOLERANCE</b>		Date	Name
X.	±0.50	10.12.2009	Dean
X.X	±0.30	Approved	19.04.2016
X.XX	±0.10	Winnie	
<b>DIM</b>	<b>TOL</b>	ASSMANN WSW-No.	
X.°	±1°	A-TB750-VIXXH	
<b>Angle</b>	<b>TOL</b>	Drawing-No.	
		ASS 3947 CO	
		Replace	
		Sheet	

1 2 3 4 5 6 7

A	1	2	3	4	5	6	7
B	1	2	3	4	5	6	7
C	1	2	3	4	5	6	7
D	1	2	3	4	5	6	7
E	1	2	3	4	5	6	7
F	1	2	3	4	5	6	7
G	1	2	3	4	5	6	7
H	1	2	3	4	5	6	7