

1

2

3

4

5

6

7

## Dimension

DIM A	Nx5,08
DIM B	(N-1)x5,08



## N=Number of poles

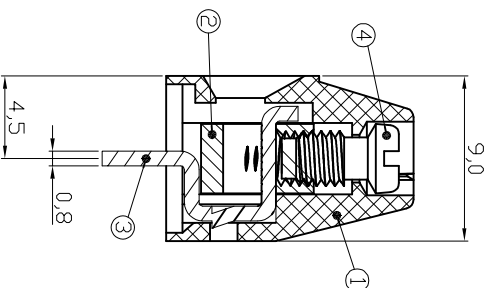
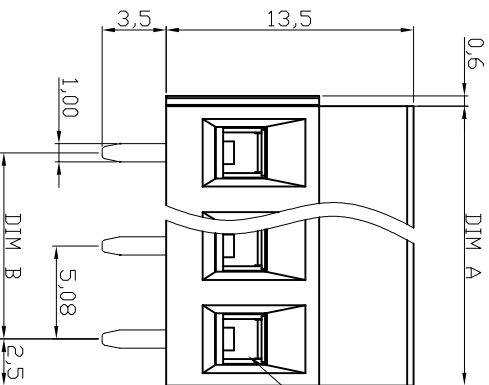
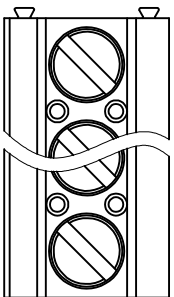
POLES	TOL
2p-6p	±0.15
7p-12p	±0.25
13p-16p	±0.35
17p-24p	±0.40

## Material

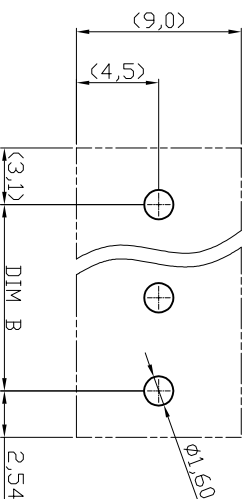
- Item 1 Terminal housing: Thermoplastic UL94V-0, Green  
 Item 2 Clamp: Brass ,Ni plated  
 Item 3 Wire guard solder pin: Brass ,Tin plated  
 Item 4 Terminal screw: Steel Zinc plating "slot" type

## Electrical cULus/ FIMKO

- Voltage rating: 300VAC/300VAC  
 Current rating: 16A/17.5A  
 Wire range: 0.5-1.5mm<sup>2</sup>  
 Solid wire(AWG): 12-28  
 Stranded wire(AWG): 12-28  
 Torque: 3.5LB-in/0.5N.m  
 Screw: M3  
 Wire strip length: 6-7mm  
 Withstanding Voltage: 1.6kV/2.5kV  
 Operating temperature: -40°C to +115°C  
 Soldering temperature: 250°C±10°C/5Sec  
 Safety Approval:  



N=Number of contacts



A

B

C

D

E

F

G

H

RoHS compliant



File No.: E349947

Scale	1:1
TOLERANCE	
X.	±0.50
X.X	±0.30
X.XX	±0.10
DIM	TOL
X.°	±1°
Angle	TOL

Id.	Modification	Date	Name
①	Drawn	10.12.2009	Dean
②	Modify drawing	19.04.2010	Dean
③	Add the UL File No.	19.04.2016	Winnie

Date	Name
Drawn	Dean
Approved	Winnie

Customer-No.

ASSMANN WSW-No.

A-TB508-VIXXH

Drawing-No.

ASS 3927 CO rev03

Replace

Sheet

1

2

3

4

5

6

7