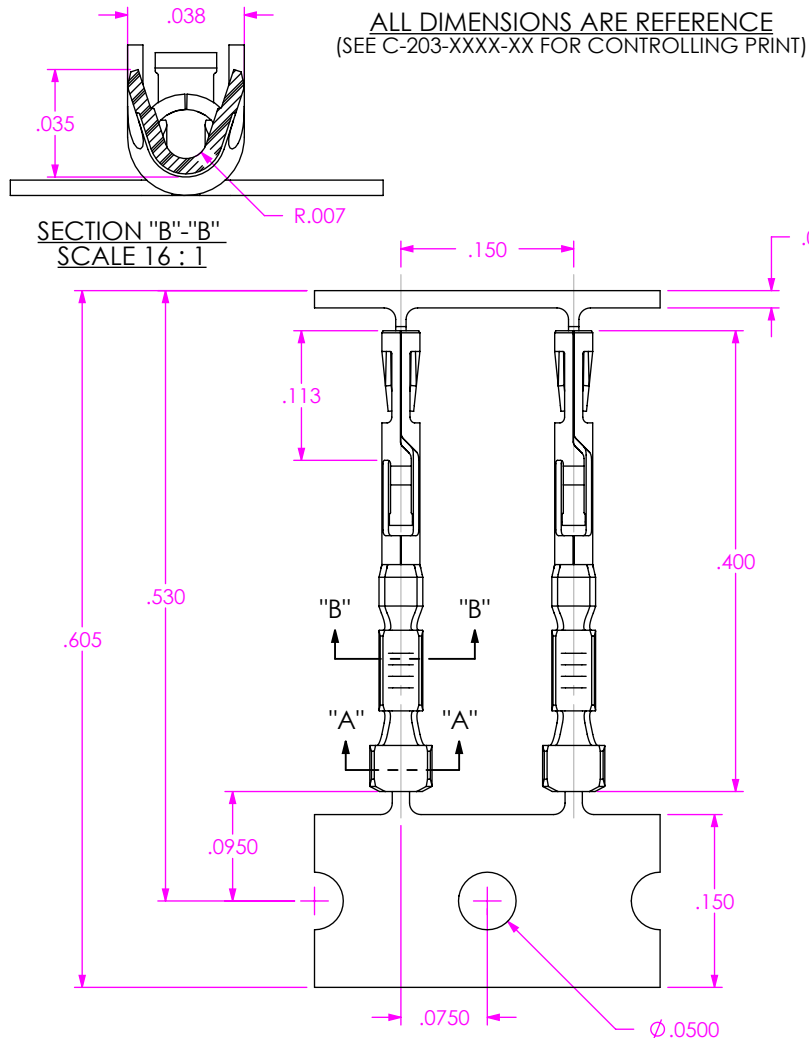


DO NOT SCALE FROM THIS PRINT



ALL DIMENSIONS ARE REFERENCE (SEE C-203-XXXX-XX FOR CONTROLLING PRINT)

CC03X-XXXX-01-XX

SUPPLIED
 *L: LOOSE
 R: REEL
 M: MINI REEL
 (* =FOR EXISTING CUSTOMERS ONLY)

PLATING SPECIFICATION
 -GF: 3μ" GOLD FLASH IN CONTACT AREA, 3μ" GOLD ON TAIL
 -G: 10μ" LIGHT GOLD IN CONTACT AREA, 3μ" GOLD ON TAIL
 -H: 30μ" HEAVY GOLD IN CONTACT AREA, 3μ" GOLD ON TAIL

LEAD STYLE
 -2830: 28-30 AWG

OPTION INSULATION THICKNESS:

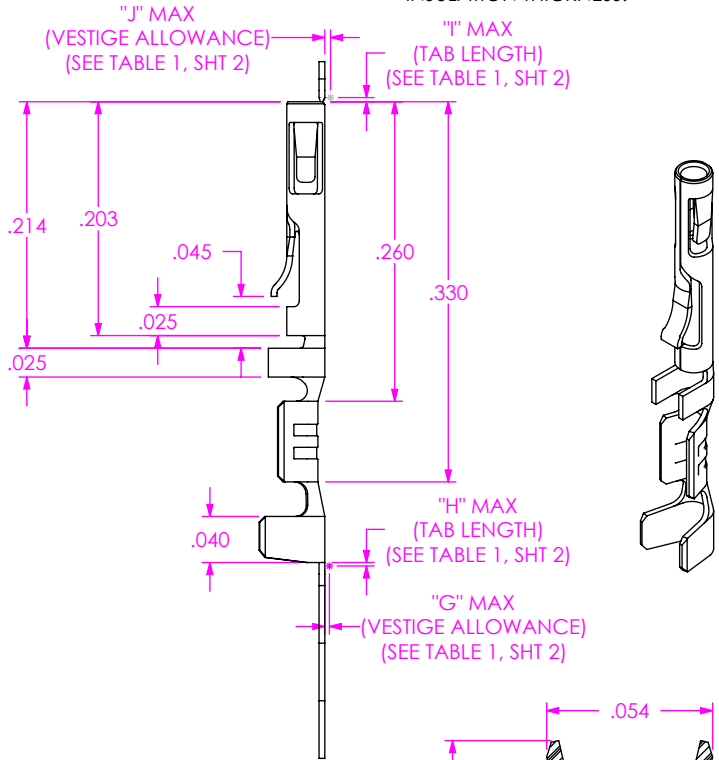
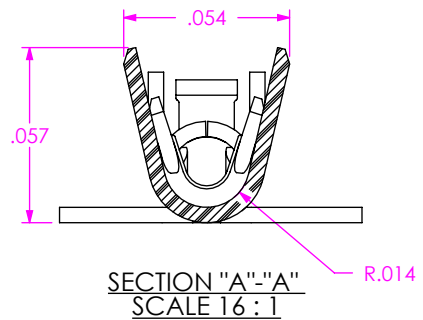



FIG 1 (CC03X-2830-01-X SHOWN)



- NOTES:
1. PLATED C-203 PARTS TO BE PULLED, PLATING OPTION CONFIRMED, POSITIONED AS SHOWN ON SAMTEC REEL WITH VIEWPORTS, LABELED CC03R WITH APPROPRIATE PLATING CALLOUT AND LABEL PLACED AS SHOWN.
 2. MAXIMUM NO OF SPLICES PER REEL:
 -R: 2
 -M: 1
 3. SPLICES ARE NOT TO BE CONNECTED.
 4. NUMBER OF SPLICES TO BE MARKED ON EACH REEL.
 5. REELED PARTS TO BE INTERLEAVED WITH PAPER BETWEEN EACH LAYER OF PARTS.
 6. ALLOWABLE INTERLEAF SPLICES PER REEL:
 -R: 3
 -M: 1
 7. SECURELY CONNECT INTERLEAF SPLICE.
 8. OUTER WRAP FOR PROTECTIVE REEL BAND AS BELOW:
 -R: RB-24-0.75-P
 -M: CRT-016-0.018
 9. DUE TO PLATING REQUIREMENTS CONTACT SAMPLES MAY BE REMOVED INTERMITTINGLY FROM THE CARRIER RESULTING IN SMALL GAPS BUT DOES NOT AFFECT FINAL COUNT.
 10. QTY PER REEL:
 -R: 35,000 +700/-0 PCS
 -M: 1,000 +300/-0 PCS
 11. MAXIMUM THREE SECTIONS OF MISSING PINS PER REEL. A SECTION IS DEFINED AS MINIMUM 0.5" OR TWO PINS (WHICHEVER IS GREATER). SECTIONS GREATER THAN 3" WILL REQUIRE A SPLICE.

UNLESS OTHERWISE SPECIFIED, DIMENSIONS ARE IN INCHES. TOLERANCES ARE: DECIMALS ANGLES		<p>PROPRIETARY NOTE</p> <p>THIS DOCUMENT CONTAINS CONFIDENTIAL AND PROPRIETARY INFORMATION AND ALL DESIGN, MANUFACTURING, REPRODUCTION, USE, PATENT RIGHTS AND SALES RIGHTS ARE EXPRESSLY RESERVED BY SAMTEC, INC. THIS DOCUMENT SHALL NOT BE DISCLOSED, IN WHOLE OR PART, TO ANY UNAUTHORIZED PERSON OR ENTITY NOR REPRODUCED, TRANSFERRED OR INCORPORATED IN ANY OTHER PROJECT IN ANY MANNER WITHOUT THE EXPRESS WRITTEN CONSENT OF SAMTEC, INC.</p>
MATERIAL:	DO NOT SCALE DRAWING	SHEET SCALE: 6:1
BeCu		
THICKNESS: .0050		
F:\DWG\MISC\MKTG\CC03X-XXXX-01-XX-MKT.SLDDRW		

	
520 PARK EAST BLVD, NEW ALBANY, IN 47150 PHONE: 812-944-6733 FAX: 812-948-5047 e-Mail: info@SAMTEC.com code: 55322	
DESCRIPTION:	.050" C.L. DISCRETE WIRE CONTACT
DWG. NO.	CC03X-XXXX-01-XX
BY: BRATCHER	3/8/2005 SHEET 1 OF 2

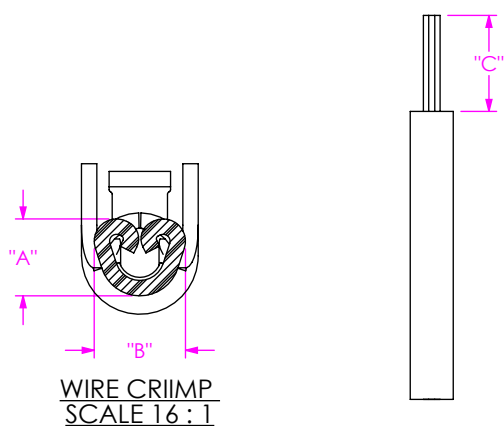


TABLE 1

P/N	AWG	STRANDS/AWG	INSULATION OD	"A"	"B"	"C"	"G" MAX (VESTIGE LENGTH)	"H" MAX (TAB LENGTH)	"J" MAX (VESTIGE LENGTH)	"I" MAX (TAB LENGTH)	PULL FORCE (LBS)
CC03X-2830-01-XX	30	7/38	.0290-.0380	0.0170	0.0300	0.105	0.003	0.0075	0.001	0.002	1.5
	28	7/36		0.0180	0.0300		0.003	0.0075	0.001	0.002	2

FIG 2
RECOMENDED PROCESSING

UNWINDING DIRECTION

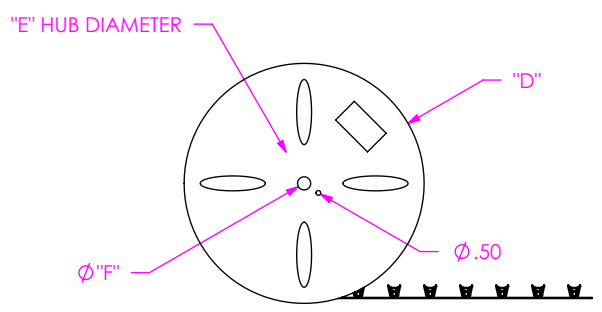
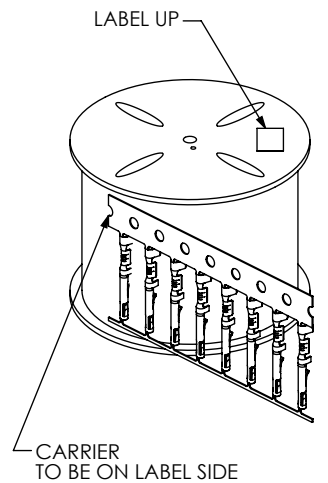


TABLE 2

SUPPLIED	REEL PART NUMBER	"D"	"E"	"F"
-R	R-24-05.00-0.75-P	24.0	5.50	1.125
-M	MR-13.0-4.00-16	13.0	4.00	0.500

FIG 3
REEL SPECIFICATIONS

PROPRIETARY NOTE
 THIS DOCUMENT CONTAINS CONFIDENTIAL AND PROPRIETARY INFORMATION AND ALL DESIGN, MANUFACTURING, REPRODUCTION, USE, PATENT RIGHTS AND SALES RIGHTS ARE EXPRESSLY RESERVED BY SAMTEC, INC. THIS DOCUMENT SHALL NOT BE DISCLOSED, IN WHOLE OR PART, TO ANY UNAUTHORIZED PERSON OR ENTITY NOR REPRODUCED, TRANSFERRED OR INCORPORATED IN ANY OTHER PROJECT IN ANY MANNER WITHOUT THE EXPRESS WRITTEN CONSENT OF SAMTEC, INC.

DO NOT SCALE DRAWING

SHEET SCALE: 6:1

520 PARK EAST BLVD, NEW ALBANY, IN 47150
 PHONE: 812-944-6733 FAX: 812-948-5047
 e-Mail: info@SAMTEC.com code: 55322

DESCRIPTION: .050" C.L. DISCRETE WIRE CONTACT

DWG. NO. CC03X-XXXX-01-XX

BY: BRATCHER 3/8/2005 SHEET 2 OF 2