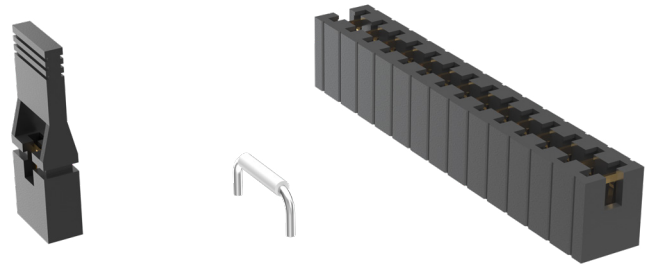


# SHUNTS & JUMPERS



(2.54 mm) .100" PITCH • SNT/MNT/2SN/SNM/PK/JL SERIES

## SNT/MNT

### Mates:

TSW, HTSW, MTSW,  
HMTSW, TLW, DW, EW,  
ZW, HW, TSM, BST, PHT

## 2SN

### Mates:

TMMH, TMM,  
MTMM, MMT, TW,  
LTMM, ZLTMM, TSH, EHT

## SNM

### Mates:

TMS, MTMS, DWM

## SPECIFICATIONS

### SNT

#### Insulator Material:

Glass Filled Polyester

#### Contact Material:

Phosphor Bronze

#### Current Rating (SNT/TSW):

4.3 A per pin

(1 pin powered per row)

#### Operating Temp Range:

-55 °C to +125 °C (Gold)

-55 °C to +105 °C (Tin)

#### Insertion Depth:

(4.32 mm) .170" minimum

#### Lead Size accepted:

(0.64 mm) .025" SQ

### MNT

Same as SNT except:

#### Current Rating (MNT/TSM):

3.9 A per pin

(1 pin powered per row)

#### Working Voltage:

450 VAC

### 2SN

Same as SNT except:

#### Insertion Depth:

(2.29 mm) .090" minimum

#### Lead Size accepted:

(0.51 mm) .020" SQ

### SNM

Same as SNT except:

#### Insertion Depth:

(3.43 mm) .135" minimum

#### Max Processing Temp:

Not recommended for IR/VP

<b>SNT</b>	<b>100</b>	<b>BODY COLOR</b>	<b>PLATING OPTION</b>	<b>HANDLE OPTION</b>
		<b>-BK</b> = Black  <b>-RD</b> = Red  <b>-BL</b> = Blue  <b>-YW</b> = Yellow	<b>-G</b> = 10 μ" (0.25 μm) Gold  <b>-T</b> = Tin	<b>-H</b> = Handle (Black Only)  

**Note:**  
Other Gold plating options available.

<b>MNT</b>	<b>1</b>	<b>NO. OF POSITIONS</b>	<b>BODY COLOR</b>	<b>PLATING OPTION</b>
		<b>02 thru 20</b>	<b>-BK</b> = Black	<b>-G</b> = 10 μ" (0.25 μm) Gold  <b>-T</b> = Tin

**Note:**  
Some lengths, styles and options are non-standard, non-returnable.

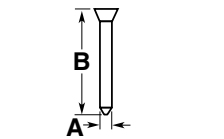
<b>2SN</b>	<b>SNM</b>
<b>PART NO.</b> 2SN-BK-G	<b>PART NO.</b> SNM-100-BK-G

<b>JL</b>

PART NO.	A
JL-100-25-T	(2.54) .100
JL-250-25-T	(6.35) .250
JL-400-25-T	(10.16) .400

**Note:**  
For complete specifications see [www.samtec.com?JL](http://www.samtec.com?JL)

## PK



PART NO.	A	B
PK-01-06	(0.64) .025 SQ	(5.84) .230
PK-01-07	(0.51) .020 SQ	(3.18) .125

**Insulator Material:**  
Natural Thermoplastic

**Note:**  
Order per wheel.  
6 pins per wheel.