

DO NOT SCALE FROM THIS PRINT

DESIGNED & DIMENSIONED IN MILLIMETERS [INCHES]

MMCX-J-P-X-ST-MT1

GENDER
-J: JACK

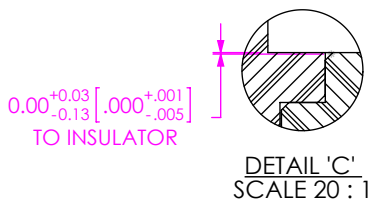
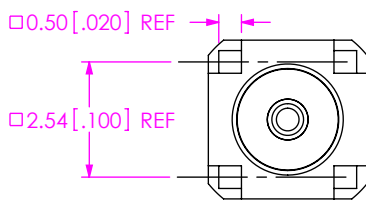
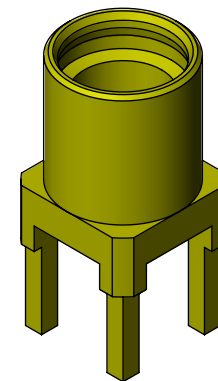
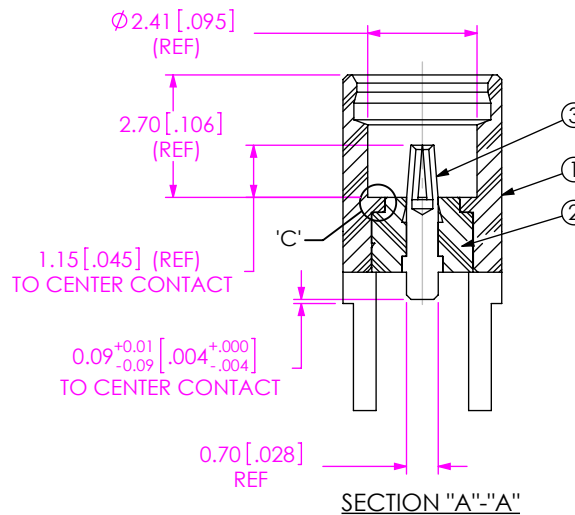
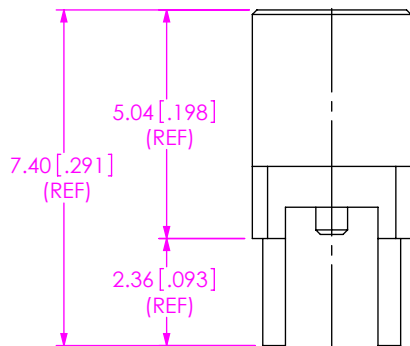
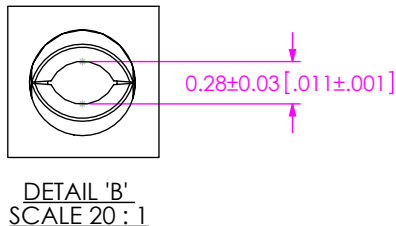
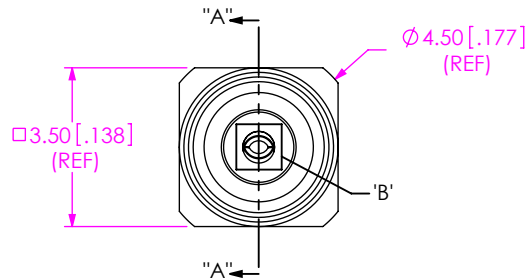
TYPE
-P: PCB

TERMINATION
-MT1: MIXED TECHNOLOGY

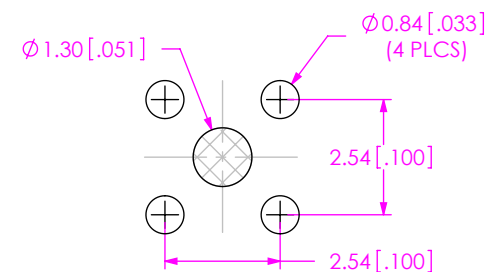
ORIENTATION
-ST: STRAIGHT

PLATING SPECIFICATION

-H: 30µ" GOLD CENTER CONTACT,
3µ" GOLD OUTER CONTACT



RECOMMENDED PCB LAYOUT



NOTES:

1. REPRESENTS A CRITICAL DIMENSION.
2. PUSHOUT FORCE FOR INSULATOR: 22.24 N [5 LB] MIN.
3. PUSHOUT FORCE FOR CENTER CONTACT: 11.12 N [2.5 LB] MIN.
4. PARTS TO BE PACKAGED PER PACKAGING STANDARD CO-RF-WI-3040-M.
5. NOTE DELETED.

c:\enterprise\dwg\misc\mktg\mmcX-J-P-X-ST-MT1-MKT.SLDRW

UNLESS OTHERWISE SPECIFIED, DIMENSIONS ARE IN MILLIMETERS [INCHES]. TOLERANCES ARE:

DECIMALS ANGLES
.X: ±0.3 [0.01] 2°
.XX: ±0.13 [0.005]
.XXX: ±0.051 [0.0020]

PROPRIETARY NOTE
THIS DOCUMENT CONTAINS CONFIDENTIAL AND PROPRIETARY INFORMATION AND ALL DESIGN, MANUFACTURING, REPRODUCTION, USE, PATENT RIGHTS AND SALES RIGHTS ARE EXPRESSLY RESERVED BY SAMTEC, INC. THIS DOCUMENT SHALL NOT BE DISCLOSED, IN WHOLE OR PART, TO ANY UNAUTHORIZED PERSON OR ENTITY NOR REPRODUCED, TRANSFERRED OR INCORPORATED IN ANY OTHER PROJECT IN ANY MANNER WITHOUT THE EXPRESS WRITTEN CONSENT OF SAMTEC, INC.

MATERIAL: DO NOT SCALE DRAWING SHEET SCALE: 6:1

SHELL: BRASS
CONTACT: COPPER ALLOY
INSULATOR: PTFE



520 PARK EAST BLVD, NEW ALBANY, IN 47150
PHONE: 812-944-6733 FAX: 812-948-5047
e-Mail: info@SAMTEC.com code: 5332

DESCRIPTION:
MMCX STRAIGHT, MIXED TECHNOLOGY JACK- 50 OHM

DWG. NO.
MMCX-J-P-X-ST-MT1

BY: R MUSSER 11/30/2007 SHEET 1 OF 1

ITEM NO.	PART NUMBER	COMPONENT
1	MMCX-J-P-X-ST-MT1-SHL	SHELL
2	MMCX-INS-008	INSULATOR
3	MMCX-SKT-002-H	SOCKET