

POWR-GARD® Fuse Datasheet

CNN / CNL SERIES LIFT TRUCK FUSES

32/48 V dc • Fast-Acting and Very Fast-Acting • 10–800 A



Description

CNL fast-acting and CNN very fast acting fuses are recommended for use on battery operated lift trucks and other low voltage battery operated equipment.

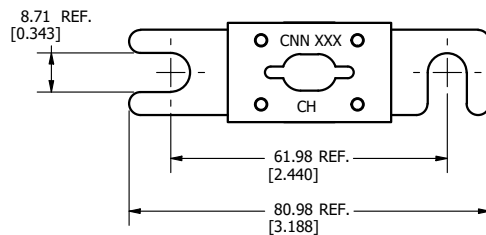
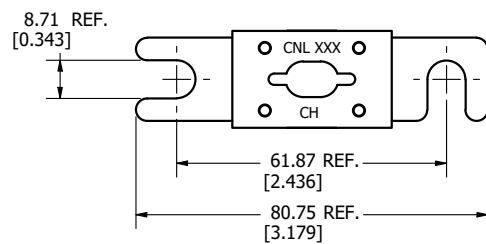
Features/Benefits

- Window shows fuse status
- Up to 2,500 A interrupting rating
- Compact size saves space
- RoHS compliant and lead (Pb) free

Applications

- Lift trucks
- Scissor lifts
- Pallet movers
- Low voltage battery powered equipment

Dimensions inches (mm)



Disclaimer Notice – Information furnished is believed to be accurate and reliable. However, users should independently evaluate the suitability of and test each product selected for their own applications. Littelfuse products are not designed for, and may not be used in, all applications. Read complete Disclaimer Notice at www.littelfuse.com/product-disclaimer.

Specifications

Voltage Ratings	CNN: 48 V dc / 125 V ac CNL: 32 V dc / 32 V ac
Ampere Ratings	10 – 800 A*
Max. Interrupting Rating	2,500 A
Approval	UR (File E71611)
Environmental	RoHS Compliant, Lead (Pb) Free
Country of Origin	China

*See ordering information table for available amperages by series

Ordering Information

AMPERE RATINGS CNN (48 V DC)					
10	60	125	225	325	600
35	80	150	250	350	700
40	90	175	275	400	800
50	100	200	300	500	—

AMPERE RATINGS CNL (32 V CDC)				
35	80	150	250	350
40	100	175	275	400
50	125	200	300	500
60	130	225	325	—

SERIES	TYPE	VOLT DC	AMP	CATALOG NUMBER	ORDERING NUMBER
CNN	VERY FAST-ACTING	48	125	CNN125	0CNN125.V
CNL	FAST-ACTING	32	50	CNL050	0CNL050.V

Web Resources

48 V dc: Littelfuse.com/cnn
32 V dc: Littelfuse.com/cnl

Recommended Fuse Block

LFFB0003Z - Littelfuse.com/lffb