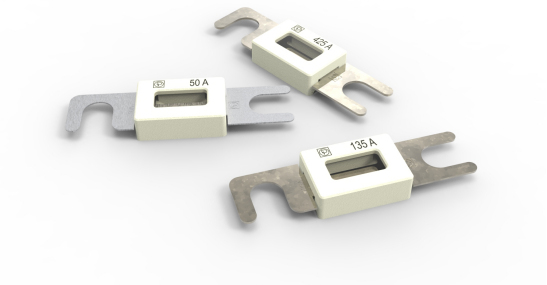


# FUSE STRIP with housing

Rated 48 V



## Specifications

|   |   |
|---|---|
| <b>Voltage Rating:</b>                        | 48 V DC   |
| <b>Interrupting Rating:</b>                   | Up to 3000 A  |
| <b>Recommended Environmental Temperature:</b> | -40 °C to +125 °C   |
| <b>Terminals Material:</b>                    | 35 A - 80 A: Zinc alloy<br>100 A - 500 A: Tin plated copper alloy |
| <b>Housing Material:</b>                      | -   |
| <b>Comply With:</b>                           | UL 248 special purpose fuses - File No. E211637                   |

## Description

Use these special purpose fuse strips to protect battery powered fuses up to 48 V. Not intended for automotive or truck applications.

## Features & Benefits

- 90° lug and straight fork ensure secure mounting
- Windows in housings show if elements remain intact

## Applications

- Battery powered fuses (NOT intended for automotive or truck applications)

## Ordering Information

| Part Number   | Package Size |
|---------------|--------------|
| 157.5701.xxx1 | 50           |
| 157.5917.xxx1 | 50           |

# FUSE STRIP with housing

Rated 48 V

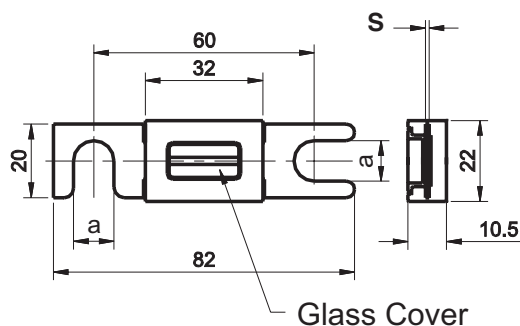
## Ratings

| Part Number   |               | Current Rating (A) | Typ. Voltage Drop (mV) | Breaking Capacity (VDC/A) | Material Thickness "S" (mm) |
|---------------|---------------|--------------------|------------------------|---------------------------|-----------------------------|
| a = 11 mm     | a = 9 mm*     |                    |                        |                           |                             |
| 157.5701.5351 | 157.5917.5351 | 35                 | 125                    | 48/210                    | 0.6                         |
| 157.5701.5401 | –             | 40                 | 125                    | 48/240                    | 0.6                         |
| 157.5701.5501 | 157.5917.5501 | 50                 | 125                    | 48/300                    | 0.6                         |
| 157.5701.5631 | 157.5917.5631 | 63                 | 125                    | 48/378                    | 0.6                         |
| 157.5701.5801 | 157.5917.5801 | 80                 | 125                    | 48/480                    | 0.6                         |
| 157.5701.6101 | 157.5917.6101 | 100                | 125                    | 48/600                    | 0.5                         |
| 157.5701.6121 | 157.5917.6121 | 125                | 125                    | 48/750                    | 0.8                         |
| 157.5701.6131 | –             | 130                | 125                    | 48/780                    | 0.8                         |
| 157.5701.6141 | –             | 135                | 125                    | 48/810                    | 0.8                         |
| 157.5701.6151 | 157.5917.6151 | 150                | 125                    | 48/900                    | 0.8                         |
| 157.5701.6161 | 157.5917.6161 | 160                | 125                    | 48/960                    | 1.0                         |
| 157.5701.6171 | 157.5917.6171 | 175                | 125                    | 48/1050                   | 1.0                         |
| 157.5701.6201 | 157.5917.6201 | 200                | 125                    | 48/1200                   | 0.8                         |
| 157.5701.6231 | 157.5917.6231 | 225                | 125                    | 48/1350                   | 0.5                         |
| 157.5701.6251 | 157.5917.6251 | 250                | 125                    | 48/1500                   | 0.5                         |
| 157.5701.6271 | 157.5917.6281 | 275                | 125                    | 48/1650                   | 0.8                         |
| 157.5701.6301 | –             | 300                | 125                    | 48/1800                   | 0.8                         |
| 157.5701.6331 | 157.5917.6331 | 325                | 125                    | 48/1950                   | 0.8                         |
| 157.5701.6351 | 157.5917.6351 | 355                | 125                    | 48/2130                   | 0.8                         |
| 157.5701.6401 | –             | 400                | 125                    | 48/2400                   | 0.8                         |
| 157.5701.6421 | 157.5917.6421 | 425                | 125                    | 48/2550                   | 1.0                         |
| 157.5701.6501 | 157.5917.6501 | 500                | 125                    | 48/3000                   | 1.0                         |

Corresponding holder see Section "Fuse Holders."

## Dimensions

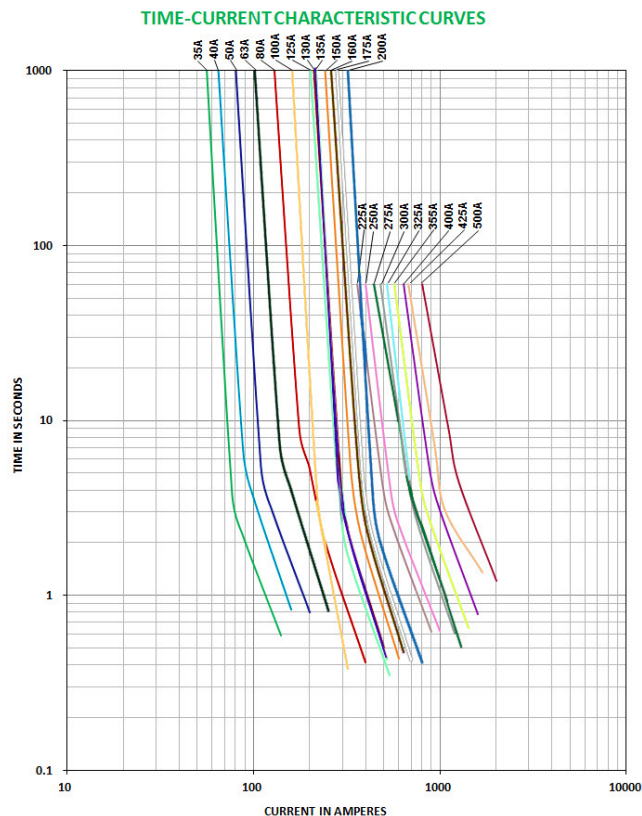
Dimensions in mm for reference only.  
See outline drawing for dimensions and tolerances



# FUSE STRIP with housing

Rated 48 V

## Time-Current Characteristic Curves



FI = 1.00 (max. operating current:  $1.0 \times I_{rat}$  at 23°C)

## Time-Current Characteristics

| % of Rating | Opening Time Min / Max (s) |           |
|-------------|----------------------------|-----------|
|             | 35-200                     | 225 - 500 |
| 150         | 3,600 s / -                | - / -     |
| 160         | - / -                      | 60 s / -  |
| 220         | - / 60 s                   |           |
| 250         | 0.8 s / 10 s               |           |
| 400         | 0.20 / 2 s                 |           |