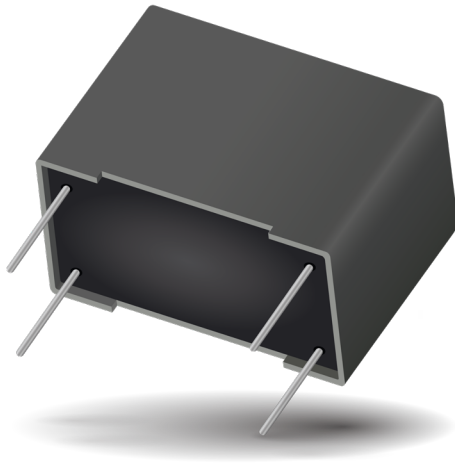
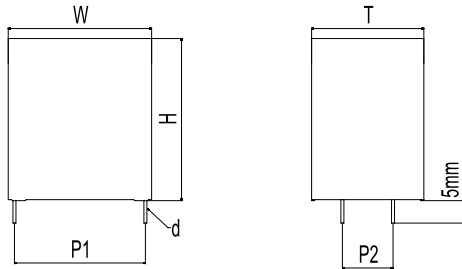


DC FILTERING

FE* RoHS Compliant



DIMENSIONS



STANDARDS

- IEC 61071-1: Power electronic capacitors
- IEC 61071-2: Power electronic capacitors
- IEC 60384-16: Fixed metallized polypropylene film dielectric DC capacitors
- IEC 60384-16-1: Fixed metallized polypropylene film dielectric DC capacitors Assessment level E
- IEC 60384-17: Fixed metallized polypropylene film dielectric AC and pulse capacitors
- IEC 60384-17-1: Fixed metallized polypropylene film dielectric AC and pulse capacitors
- EN CZDS2.E514026 Certificate: E514026 (approved by UL)

HOW TO ORDER

FE	52	G*	6	I	0137	K	B
Series	Pitch	Case Size	Type	Voltage	Cap	Tolerance	Lead Type
FE	37 = 37.5mm 52 = 52.5mm	F* for P=37.5mm G* for P=52.5mm	6 = Standard 105°C 7 = THB Grade IIIB 105°C 8 = THB 2000H 125°C	I = 450V H = 500V J = 550V Q = 600V A = 700V B = 800V C = 900V K = 1000V L = 1100V P = 1200V	µF Code	K = ±10% M = ±20% J = ±5%, refer factory	A = 4 pins P2=10.2mm B = 4 pins P2=20.3mm

* THB - Temperature Humidity Bias

GENERAL DESCRIPTION

The FE series uses a non-impregnated metallized polypropylene dielectric specially treated to have a very high dielectric strength in operation condition up to 125°C.

FE series performance characteristics make them a viable alternative to aluminum electrolytic technology due to much lower ESR and much higher surge voltage capability (dv/dt).

GENERAL CHARACTERISTICS

- Able to Withstand Harsh Environment Conditions

FEATURES & BENEFITS

- High Performance DC Filter
- Low ESR, High Peak & RMS Current
- THB Grade IIIB
- Able to Withstand Harsh Environment Conditions (THB Grade IIIB)

APPLICATIONS

- Renewable Energy Inverter
- Motor Drives
- Industrial Power Supply
- UPS System

OPERATING TEMPERATURE RANGE

- Operating temperature range : -40°C to + 105°C (Type 6 and 7)
- Operating temperature range : -40°C to + 125°C (Type 8)

PACKAGING MATERIAL

Self-extinguishing plastic case (V0 = in accordance with UL 94) filled thermosetting resin.

Self-extinguishing thermosetting resin (V0 = in accordance with UL 94).

LIFE EXPECTANCY

One unique feature of this technology (versus aluminum electrolytics) is how the capacitor reacts at the end of its lifetime.

Unlike aluminum electrolytic film capacitors do not have a catastrophic failure mode. Film capacitors simply experience a parametric loss of capacitance of about 2% from initial value, with no risk of short circuit.

The capacitor continues to be functional even after this 2% decrease.

DC FILTERING

FE *RoHS Compliant



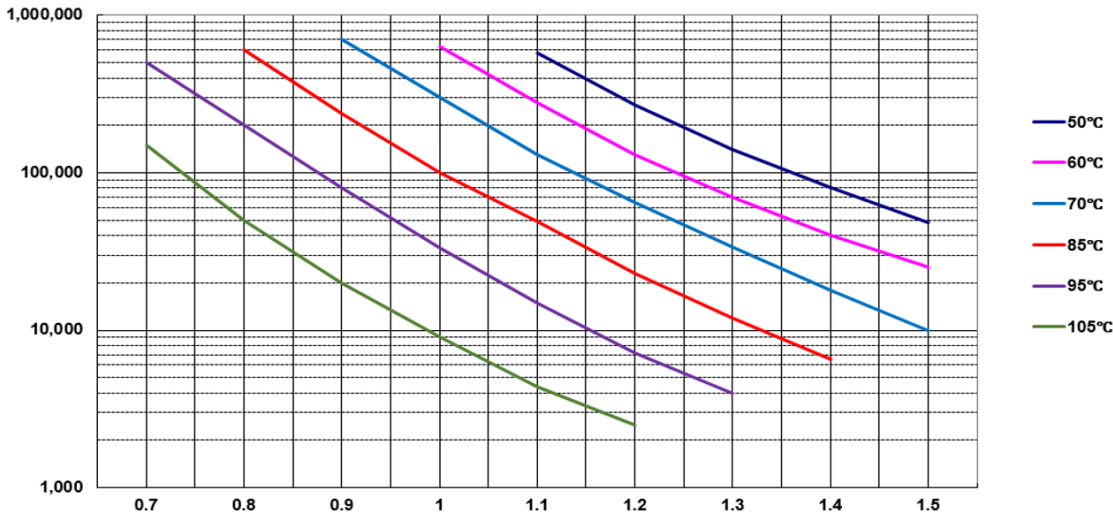
POLYPROPYLENE DIELECTRIC FOR INDUSTRIAL DC FILTERING

These capacitors have been designed primarily for high and medium power DC filtering applications.

ELECTRICAL CHARACTERISTICS – POLYPROPYLENE DIELECTRIC

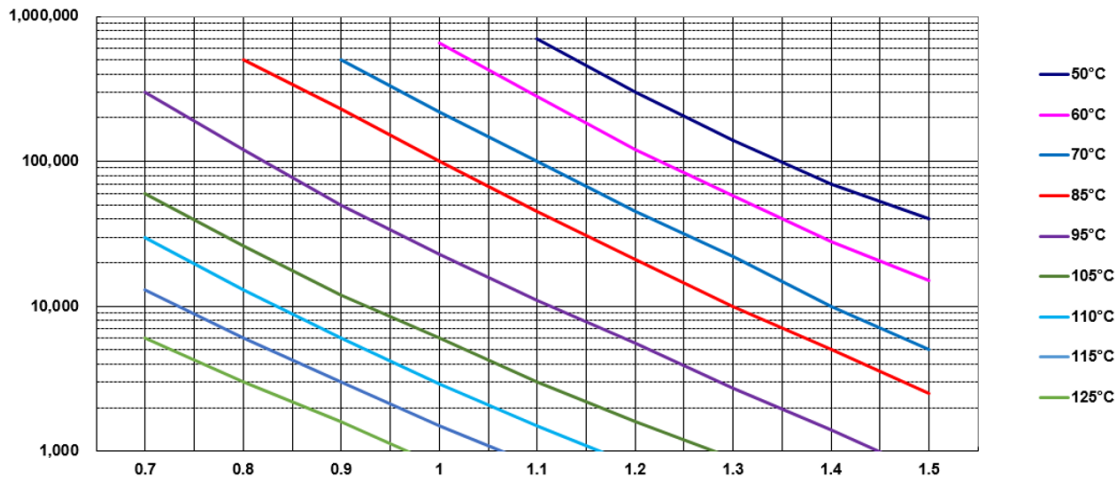
Items	Characteristics		
	Standard - 105°C	THB Grade IIB - 105°C	THB 2000H - 125°C
Application	DC Filtering / DC Link		
Reference Standard	IEC 61071		
Climatic Category	40/85/56 IEC 60068-1		40/105/56 IEC 60068-1
Operating Temperature Range	-40°C ~ +105°C (85°C ~105°C, decreasing factor 1.25% per °C for Rated Voltage)		-40°C ~ +125°C (85°C ~125°C, decreasing factor 0.75% per °C for Rated Voltage)
Upper Temperature Tmax	105°C		125°C
Lower Temperature Tmin	-40°C		-55°C
Rated Voltage	450Vdc ~ 1200Vdc		450Vdc ~ 1100Vdc
Capacitance Range	1uF ~ 220uF		
Capacitance Tolerance	±10% at +25°C		
Dissipation Factor (DF)	≤0.002 (0.2%) at 1KHz; C ≤20μF at 25°C		
	≤0.003 (0.3%) at 1KHz; C >20μF at 25°C		
	≤0.004 (0.4%) at 1KHz; C >80μF at 25°C		
Test Voltage Between Terminals	1.5 x rated voltage for 10s (terminal to terminal)		
Test Voltage Terminal to Case	3.0kVrms 50 Hz for 10 sec at +25°C		
Insulation Resistance	IR x C≥30,000 Seconds at 100VDC 1 minute at +25°C		
Life Expectancy	100,000 hours at Un @ Hot-Spot temperature T=+85°C	100,000 hours at Un @ Hot-Spot temperature T=+85°C	
		20,000 hours at Un @ Hot-Spot temperature T=+105°C	
		5,000 hours at Un @ Hot-Spot temperature T=+115°C	
		4,000 hours at Un @ Hot-Spot temperature T=+125°C	
Protection	Solvent resistant plastic case UL94 V-0 Thermosetting resin sealing UL 94 V-0 compliant		
Installation	Any position		
Leads	Tinned copper wires, standard lead wire length 5 ±1mm		
Packaging	Packed in cardboard boxes with protection for the terminals		
RoHS Compliant	Compliant with the restricted substance requirements of Directive 2011/65/EU		
Storage Conditions	Storage time: ≤ 24 months from the date marked on the label package		
	Temperature and relative humidity should be -10°C ~ +40°C and not more than 75%RH. RH ≤ 85% for 30 days randomly distributed throughout the year		
Humidity Test	Test conditions & performance:		
	Temperature: +40°C±2°C		
	Relative humidity (RH): 93% ±2%		
	Test duration: 56 days		
	Capacitance change: ≤±5% DF change (@tgδ): ≤50 X 10 ⁻⁴ at 1KHz Insulation resistance: ≥50% of initial limit		
Endurance Test	Test conditions & performance:		
	Temperature: +85°C±2°C		
	Voltage applied: 1.3 X VR (d.c.)		
	Test duration: 1000 Hours		
	Capacitance change: ≤±5% DF change (@ tgδ): ≤50 X 10 ⁻⁴ at 1KHz Insulation resistance: ≥50% of initial limit		
High Temperature High Humidity	Test conditions & performance:		Test conditions & performance:
	Temperature: +85°C±2°C		Temperature: +85°C±2°C
	Relative humidity (RH): 85% ±2%		Relative humidity (RH): 85% ±2%
	Voltage applied: Rated Voltage		Voltage applied: Rated Voltage
	Test duration: 1000 Hours		Test duration: 2000 Hours
	Capacitance change: ≤±10%		Capacitance change: ≤±10%
	DF change (@ tgδ): ≤80 X 10 ⁻⁴ at 1KHz Insulation resistance: ≥50% of initial limit		DF change (@ tgδ): ≤80 X 10 ⁻⁴ at 1KHz Insulation resistance: ≥50% of initial limit
THB Test (Damp heat test with loading)	Test conditions & performance:		
	Temperature: +85°C±2°C Relative humidity (RH): 85% ±2%		
	Loading Voltage: Rated Voltage (DC)		
	Test duration: 1000 hours Capacitance change: ≤±5%		

Expected Life Curve at Hot Spot Temperature (T_{HS})



For Standard & THB Grade IIIB - 105°C

Expected Life Curve at Hot Spot Temperature (T_{HS})



For THB 2000H - 125°C

DC FILTERING

FE - Standard 105°C *RoHS Compliant



CASE CODE

Case Code	Dimensions											
	W ± 0.8(0.03)		H ± 0.8(0.03)		T ± 0.8(0.03)		P1 ± 1.0(0.04)		P2 ± 1.0(0.04)		d ± 0.05(0.002)	
	mm	in	mm	in	mm	in	mm	in	mm	in	mm	in
FK	42.0	(1.65)	37.0	(1.46)	22.0	(0.87)	37.5	(1.48)	10.2	(0.40)	1.2	(0.05)
FL	42.0	(1.65)	37.0	(1.46)	28.0	(1.10)	37.5	(1.48)	10.2	(0.40)	1.2	(0.05)
F6	42.0	(1.65)	40.0	(1.57)	20.0	(0.79)	37.5	(1.48)	10.2	(0.40)	1.2	(0.05)
FR	42.0	(1.65)	43.0	(1.69)	28.0	(1.10)	37.5	(1.48)	10.2	(0.40)	1.2	(0.05)
F8	42.0	(1.65)	44.0	(1.73)	24.0	(0.94)	37.5	(1.48)	10.2	(0.40)	1.2	(0.05)
F9	42.0	(1.65)	45.0	(1.77)	30.0	(1.18)	37.5	(1.48)	20.3	(0.80)	1.2	(0.05)
FX	42.0	(1.65)	45.0	(1.77)	35.0	(1.38)	37.5	(1.48)	20.3	(0.80)	1.2	(0.05)
FN	42.0	(1.65)	50.0	(1.97)	35.0	(1.38)	37.5	(1.48)	20.3	(0.80)	1.2	(0.05)
FT	42.0	(1.65)	55.0	(2.17)	40.0	(1.57)	37.5	(1.48)	20.3	(0.80)	1.2	(0.05)
FS	42.0	(1.65)	60.0	(2.36)	45.0	(1.77)	37.5	(1.48)	20.3	(0.80)	1.2	(0.05)
G9	57.5	(2.26)	45.0	(1.77)	25.0	(0.98)	52.5	(2.07)	10.2	(0.40)	1.2	(0.05)
GA	57.5	(2.26)	45.0	(1.77)	30.0	(1.18)	52.5	(2.07)	20.3	(0.80)	1.2	(0.05)
GC	57.5	(2.26)	50.0	(1.97)	35.0	(1.38)	52.5	(2.07)	20.3	(0.80)	1.2	(0.05)
GE	57.5	(2.26)	55.0	(2.17)	45.0	(1.77)	52.5	(2.07)	20.3	(0.80)	1.2	(0.05)
GF	57.5	(2.26)	60.0	(2.36)	35.0	(1.38)	52.5	(2.07)	20.3	(0.80)	1.2	(0.05)
GH	57.5	(2.26)	65.0	(2.56)	35.0	(1.38)	52.5	(2.07)	20.3	(0.80)	1.2	(0.05)
GI	57.5	(2.26)	65.0	(2.56)	45.0	(1.77)	52.5	(2.07)	20.3	(0.80)	1.2	(0.05)

RATING & PART NUMBER REFERENCE

Cap uF	Rated Voltage V	KAVX PN	Voltage Code	Case Code	Dimensions						dv/dt V/us	Peak Current A	Irms A	ESR 10KHz mΩ	Rth °C/W	ESL nH	SPQ pcs	MOQ pcs	Estimated Weight g/pcs
					W ± 0.8 mm	H ± 0.8 mm	T ± 0.8 mm	P1 ± 1.0 mm	P2 ± 1.0 mm	d ± 0.05 mm									
Voltage Vndc 450V																			
30	450	FE37FK6I0306KA	I	FK	42.0	37	22.0	37.5	10.2	1.2	35	1050	11.0	9.2	14.3	14	49	1,176	40
35	450	FE37FK6I0356KA	I	FK	42.0	37	22.0	37.5	10.2	1.2	35	1225	13.3	7.9	14.3	14	49	1,176	40
40	450	FE37F6I0406KA	I	F6	42.0	40	20	37.5	10.2	1.2	35	1400	14.4	6.9	13.9	14	56	1,344	41
40	450	FE37FK6I0406KA	I	FK	42.0	37	22	37.5	10.2	1.2	35	1400	14.2	6.9	14.3	14	49	1,176	40
50	450	FE37FL6I0506KA	I	FL	42.0	37	28	37.5	10.2	1.2	35	1750	17.2	5.5	12.2	15	42	1,008	52
55	450	FE37F86I0556KA	I	F8	42.0	44	24	37.5	10.2	1.2	35	1925	18.1	5.0	12.2	15	49	1,176	52
60	450	FE37FR6I0606KA	I	FR	42.0	43	28	37.5	10.2	1.2	35	2100	18.9	4.6	11.8	16	42	1,008	60
65	450	FE37F96I0656KB	I	F9	42.0	45	30	37.5	20.3	1.2	35	2275	19.6	4.3	10.0	16	35	840	65
70	450	FE37F96I0706KB	I	F9	42.0	45	30	37.5	20.3	1.2	35	2450	20.7	4.0	10.0	16	35	840	65
80	450	FE37FX6I0806KB	I	FX	42.0	45	35	37.5	20.3	1.2	35	2800	24.1	3.5	9.1	17	35	840	82
90	450	FE37FN6I0906KB	I	FN	42.0	50	35	37.5	20.3	1.2	35	3150	27.9	3.1	8.3	17	28	672	88
110	450	FE37FT6I0117KB	I	FT	42.0	55	40	37.5	20.3	1.2	35	3850	30.9	2.5	7.7	18	28	672	110
120	450	FE37FT6I0127KB	I	FT	42.0	55	40	37.5	20.3	1.2	35	4200	32.3	2.3	7.7	18	28	672	110
140	450	FE37FS6I0147KB	I	FS	42.0	60	45	37.5	20.3	1.2	35	4900	34.9	2.0	7.1	20	21	504	134
Voltage Vndc 500V																			
80	450	FE52G96I0806KA	I	G9	57.5	45	25	52.5	10.2	1.2	20	1600	17.3	7.3	9.1	14	30	1,080	70
100	450	FE52GA6I0107KB	I	GA	57.5	45	30	52.5	20.3	1.2	20	2000	19.4	5.9	8.0	15	25	900	88
130	450	FE52GC6I0137KB	I	GC	57.5	50	35	52.5	20.3	1.2	20	2600	23.6	4.5	6.9	17	20	720	114
160	450	FE52GF6I0167KB	I	GF	57.5	60	35	52.5	20.3	1.2	20	3200	28.2	3.7	6.1	18	20	720	138
170	450	FE52GE6I0177KB	I	GE	57.5	55	45	52.5	20.3	1.2	20	3400	30.9	3.4	5.4	19	15	540	162
180	450	FE52GH6I0187KB	I	GH	57.5	65	35	52.5	20.3	1.2	20	3600	31.9	3.3	5.7	18	20	720	145
180	450	FE52GE6I0187KB	I	GE	57.5	55	45	52.5	20.3	1.2	20	3600	31.9	3.3	5.4	19	15	540	162
210	450	FE52GI6I0217KB	I	GI	57.5	65	45	52.5	20.3	1.2	20	4200	35.4	2.8	5.1	20	15	540	189
220	450	FE52GI6I0227KB	I	GI	57.5	65	45	52.5	20.3	1.2	20	4400	37.3	2.7	5.1	20	15	540	189
Voltage Vndc 500V																			
30	500	FE37FK6H0306KA	H	FK	42.0	37	22	37.5	10.2	1.2	35	1050	12.8	8.5	14.3	14	49	1,176	40
35	500	FE37FK6H0356KA	H	FK	42.0	37	22	37.5	10.2	1.2	35	1225	13.8	7.3	14.3	14	49	1,176	40
40	500	FE37F66H0406KA	H	F6	42.0	40	20	37.5	10.2	1.2	35	1400	15.0	6.4	13.9	14	56	1,344	41
40	500	FE37FK6H0406KA	H	FK	42.0	37	22	37.5	10.2	1.2	35	1400	14.8	6.4	14.3	14	49	1,176	40
50	500	FE37FL6H0506KA	H	FL	42.0	37	28	37.5	10.2	1.2	35	1750	17.9	5.1	12.2	15	42	1,008	52
55	500	FE37F86H0556KA	H	F8	42.0	44	24	37.5	10.2	1.2	35	1925	18.8	4.7	12.2	15	49	1,176	52
60	500	FE37FR6H0606KA	H	FR	42.0	43	28	37.5	10.2	1.2	35	2100	20.0	4.3	11.8	16	42	1,008	60

DC FILTERING

FE - Standard 105°C *RoHS Compliant



RATING & PART NUMBER REFERENCE

Cap	Rated Voltage	KAVX PN	Voltage Code	Case Code	Dimensions						dv/dt	Peak Current	Irms	ESR 10KHz	Rth	ESL	SPQ	MOQ	Estimated Weight
					W ± 0.8	H ± 0.8	T ± 0.8	P1 ± 1.0	P2 ± 1.0	d ± 0.05									
uF	V				mm	mm	mm	mm	mm	mm	V/us	A	A	mΩ	°C/W	nH	pcs	pcs	g/pcs
65	500	FE37F96H0656KB	H	F9	42.0	45	30	37.5	20.3	1.2	35	2275	22.5	3.9	10.0	16	35	840	65
70	500	FE37F96H0706KB	H	F9	42.0	45	30	37.5	20.3	1.2	35	2450	23.4	3.7	10.0	16	35	840	65
80	500	FE37FX6H0806KB	H	FX	42.0	45	35	37.5	20.3	1.2	35	2800	26.2	3.2	9.1	17	35	840	82
90	500	FE37FN6H0906KB	H	FN	42.0	50	35	37.5	20.3	1.2	35	3150	29.0	2.8	8.3	17	28	672	88
110	500	FE37FT6H0117KB	H	FT	42.0	55	40	37.5	20.3	1.2	35	3850	33.4	2.3	7.7	18	28	672	110
120	500	FE37FT6H0127KB	H	FT	42.0	55	40	37.5	20.3	1.2	35	4200	34.9	2.1	7.7	18	28	672	110
140	500	FE37FS6H0147KB	H	FS	42.0	60	45	37.5	20.3	1.2	35	4900	39.1	1.8	7.1	20	21	504	134
80	500	FE52G96H0806KA	H	G9	57.5	45	25	52.5	10.2	1.2	20	1600	18.0	6.8	9.1	14	30	1,080	70
100	500	FE52GA6H0107KB	H	GA	57.5	45	30	52.5	20.3	1.2	20	2000	21.5	5.4	8.0	15	25	900	88
130	500	FE52GC6H0137KB	H	GC	57.5	50	35	52.5	20.3	1.2	20	2600	26.4	4.2	6.9	17	20	720	114
160	500	FE52GF6H0167KB	H	GF	57.5	60	35	52.5	20.3	1.2	20	3200	31.2	3.4	6.1	18	20	720	138
170	500	FE52GE6H0177KB	H	GE	57.5	55	45	52.5	20.3	1.2	20	3400	33.1	3.2	5.4	19	15	540	162
180	500	FE52GH6H0187KB	H	GH	57.5	65	35	52.5	20.3	1.2	20	3600	34.1	3.0	5.7	18	20	720	145
180	500	FE52GE6H0187KB	H	GE	57.5	55	45	52.5	20.3	1.2	20	3600	35.1	3.0	5.4	19	15	540	162
210	500	FE52GI6H0217KB	H	GI	57.5	65	45	52.5	20.3	1.2	20	4200	38.9	2.6	5.1	20	15	540	189
220	500	FE52GI6H0227KB	H	GI	57.5	65	45	52.5	20.3	1.2	20	4400	39.8	2.5	5.1	20	15	540	189
Voltage Vndc 550V					Voltage Code J														
30	550	FE37FK6J0306KA	J	FK	42.0	37	22	37.5	10.2	1.2	35	1050	13.5	7.7	14.3	14	49	1,176	40
40	550	FE37F86J0406KA	J	F8	42.0	44	24	37.5	10.2	1.2	35	1400	16.9	5.8	12.2	15	49	1,176	52
50	550	FE37FR6J0506KA	J	FR	42.0	43	28	37.5	10.2	1.2	35	1750	19.2	4.6	11.8	16	42	1,008	60
60	550	FE37F96J0606KB	J	F9	42.0	45	30	37.5	20.3	1.2	35	2100	22.8	3.8	10.0	16	35	840	65
70	550	FE37FN6J0706KB	J	FN	42.0	50	35	37.5	20.3	1.2	35	2450	27.0	3.3	8.3	17	28	672	88
80	550	FE37FT6J0806KB	J	FT	42.0	55	40	37.5	20.3	1.2	35	2800	30.0	2.9	7.7	18	28	672	110
90	550	FE37FT6J0906KB	J	FT	42.0	55	40	37.5	20.3	1.2	35	3150	31.9	2.6	7.7	18	28	672	110
100	550	FE37FT6J0107KB	J	FT	42.0	55	40	37.5	20.3	1.2	35	3500	33.6	2.3	7.7	18	28	672	110
110	550	FE37FS6J0117KB	J	FS	42.0	60	45	37.5	20.3	1.2	35	3850	36.6	2.1	7.1	20	21	504	134
120	550	FE37FS6J0127KB	J	FS	42.0	60	45	37.5	20.3	1.2	35	4200	38.2	1.9	7.1	20	21	504	134
70	550	FE52G96J0706KA	J	G9	57.5	45	25	52.5	10.2	1.2	20	1400	17.8	7.0	9.1	14	30	1,080	70
80	550	FE52GA6J0806KB	J	GA	57.5	45	30	52.5	20.3	1.2	20	1600	20.2	6.1	8.0	15	25	900	88
90	550	FE52GC6J0906KB	J	GC	57.5	50	35	52.5	20.3	1.2	20	1800	23.1	5.4	6.9	17	20	720	114
110	550	FE52GC6J0117KB	J	GC	57.5	50	35	52.5	20.3	1.2	20	2200	25.6	4.4	6.9	17	20	720	114
130	550	FE52GF6J0137KB	J	GF	57.5	60	35	52.5	20.3	1.2	20	2600	29.7	3.8	6.1	18	20	720	138
140	550	FE52GF6J0147KB	J	GF	57.5	60	35	52.5	20.3	1.2	20	2800	30.8	3.5	6.1	18	20	720	138
140	550	FE52GH6J0147KB	J	GH	57.5	65	35	52.5	20.3	1.2	20	2800	31.7	3.5	5.7	18	20	720	145
140	550	FE52GE6J0147KB	J	GE	57.5	55	45	52.5	20.3	1.2	20	2800	32.6	3.5	5.4	19	15	540	162
150	550	FE52GE6J0157KB	J	GE	57.5	55	45	52.5	20.3	1.2	20	3000	33.7	3.3	5.4	19	15	540	162
170	550	FE52GI6J0177KB	J	GI	57.5	65	45	52.5	20.3	1.2	20	3400	36.9	2.9	5.1	20	15	540	189
190	550	FE52GI6J0197KB	J	GI	57.5	65	45	52.5	20.3	1.2	20	3800	39.0	2.6	5.1	20	15	540	189
Voltage Vndc 600V					Voltage Code Q														
22	600	FE37F66Q0226KA	Q	F6	42.0	40	20	37.5	10.2	1.2	35	770	12.7	9.0	13.9	14	56	1,344	41
25	600	FE37F66Q0256KA	Q	F6	42.0	40	20	37.5	10.2	1.2	35	875	13.5	7.9	13.9	14	56	1,344	41
30	600	FE37FL6Q0306KA	Q	FL	42.0	37	28	37.5	10.2	1.2	35	1050	15.8	6.6	12.2	15	42	1,008	52
33	600	FE37F86Q0336KA	Q	F8	42.0	44	24	37.5	10.2	1.2	35	1155	16.6	6.0	12.2	15	49	1,176	52
35	600	FE37FR6Q0356KA	Q	FR	42.0	43	28	37.5	10.2	1.2	35	1225	17.4	5.6	11.8	16	42	1,008	60
40	600	FE37F96Q0406KB	Q	F9	42.0	45	30	37.5	20.3	1.2	35	1400	20.1	4.9	10.0	16	35	840	65
45	600	FE37F96Q0456KB	Q	F9	42.0	45	30	37.5	20.3	1.2	35	1575	21.3	4.4	10.0	16	35	840	65
45	600	FE37FX6Q0456KB	Q	FX	42.0	45	35	37.5	20.3	1.2	35	1575	22.4	4.4	9.1	17	35	840	82
50	600	FE37FX6Q0506KB	Q	FX	42.0	45	35	37.5	20.3	1.2	35	1750	23.6	4.0	9.1	17	35	840	82
50	600	FE37FN6Q0506KB	Q	FN	42.0	50	35	37.5	20.3	1.2	35	1750	24.6	4.0	8.3	17	28	672	88
60	600	FE37FT6Q0606KB	Q	FT	42.0	55	40	37.5	20.3	1.2	35	2100	28.1	3.3	7.7	18	28	672	110
70	600	FE37FT6Q0706KB	Q	FT	42.0	55	40	37.5	20.3	1.2	35	2450	30.4	2.8	7.7	18	28	672	110
75	600	FE37FS6Q0756KB	Q	FS	42.0	60	45	37.5	20.3	1.2	35	2625	32.6	2.6	7.1	20	21	504	134
80	600	FE37FS6Q0806KB	Q	FS	42.0	60	45	37.5	20.3	1.2	35	2800	33.7	2.5	7.1	20	21	504	134
85	600	FE37FS6Q0856KB	Q	FS	42.0	60	45	37.5	20.3	1.2	35	2975	34.7	2.3	7.1	20	21	504	134
45	600	FE52G96Q0456KA	Q	G9	57.5	45	25	52.5	10.2	1.2	20	900	15.4	9.3	9.1	14	30	1,080	70
50	600	FE52G96Q0506KA	Q	G9	57.5	45	25	52.5	10.2	1.2	20	1000	16.2	8.4	9.1	14	30	1,080	70
55	600	FE52GA6Q0556KB	Q	GA	57.5	45	30	52.5	20.3	1.2	20	1100	18.1	7.6	8.0	15	25	900	88

DC FILTERING

FE - Standard 105°C *RoHS Compliant



RATING & PART NUMBER REFERENCE

Cap	Rated Voltage	KAVX PN	Voltage Code	Case Code	Dimensions						dv/dt	Peak Current	Irms	ESR 10KHz	Rth	ESL	SPQ	MOQ	Estimated Weight	
					W ± 0.8	H ± 0.8	T ± 0.8	P1 ± 1.0	P2 ± 1.0	d ± 0.05										
					mm	mm	mm	mm	mm	mm										
60	600	FE52GA6Q0606KB	Q	GA	57.5	45	30	52.5	20.3	1.2	20	1200	18.9	7.0	8.0	15	25	900	88	
65	600	FE52GC6Q0656KB	Q	GC	57.5	50	35	52.5	20.3	1.2	20	1300	21.2	6.4	6.9	17	20	720	114	
70	600	FE52GC6Q0706KB	Q	GC	57.5	50	35	52.5	20.3	1.2	20	1400	22.0	6.0	6.9	17	20	720	114	
75	600	FE52GC6Q0756KB	Q	GC	57.5	50	35	52.5	20.3	1.2	20	1500	22.8	5.6	6.9	17	20	720	114	
80	600	FE52GC6Q0806KB	Q	GC	57.5	50	35	52.5	20.3	1.2	20	1600	23.6	5.2	6.9	17	20	720	114	
90	600	FE52GF6Q0906KB	Q	GF	57.5	60	35	52.5	20.3	1.2	20	1800	26.7	4.6	6.1	18	20	720	138	
100	600	FE52GF6Q1070KB	Q	GF	57.5	60	35	52.5	20.3	1.2	20	2000	28.1	4.2	6.1	18	20	720	138	
110	600	FE52GH6Q1170KB	Q	GH	57.5	65	35	52.5	20.3	1.2	20	2200	30.3	3.8	5.7	18	20	720	145	
110	600	FE52GE6Q1170KB	Q	GE	57.5	55	45	52.5	20.3	1.2	20	2200	31.2	3.8	5.4	19	15	540	162	
130	600	FE52GI6Q1370KB	Q	GI	57.5	65	45	52.5	20.3	1.2	20	2600	34.8	3.2	5.1	20	15	540	189	
					Voltage Vndc 700V						Voltage Code A									
22	700	FE37F66A0226KA	A	F6	42.0	40	20	37.5	10.2	1.2	35	770	12.7	9.0	13.9	14	56	1,344	41	
25	700	FE37F66A0256KA	A	F6	42.0	40	20	37.5	10.2	1.2	35	875	13.5	7.9	13.9	14	56	1,344	41	
30	700	FE37FL6A0306KA	A	FL	42.0	37	28	37.5	10.2	1.2	35	1050	15.8	6.6	12.2	15	42	1,008	52	
33	700	FE37F86A0336KA	A	F8	42.0	44	24	37.5	10.2	1.2	35	1155	16.6	6.0	12.2	15	49	1,176	52	
40	700	FE37F96A0406KB	A	F9	42.0	45	30	37.5	20.3	1.2	35	1400	20.1	4.9	10.0	16	35	840	65	
45	700	FE37FX6A0456KB	A	FX	42.0	45	35	37.5	20.3	1.2	35	1575	22.4	4.4	9.1	17	35	840	82	
50	700	FE37FN6A0506KB	A	FN	42.0	50	35	37.5	20.3	1.2	35	1750	24.6	4.0	8.3	17	28	672	88	
60	700	FE37FT6A0606KB	A	FT	42.0	55	40	37.5	20.3	1.2	35	2100	28.1	3.3	7.7	18	28	672	110	
70	700	FE37FT6A0706KB	A	FT	42.0	55	40	37.5	20.3	1.2	35	2450	30.4	2.8	7.7	18	28	672	110	
75	700	FE37FS6A0756KB	A	FS	42.0	60	45	37.5	20.3	1.2	35	2625	32.6	2.6	7.1	20	21	504	134	
80	700	FE37FS6A0806KB	A	FS	42.0	60	45	37.5	20.3	1.2	35	2800	33.7	2.5	7.1	20	21	504	134	
85	700	FE37FS6A0856KB	A	FS	42.0	60	45	37.5	20.3	1.2	35	2975	34.7	2.3	7.1	20	21	504	134	
45	700	FE52G96A0456KA	A	G9	57.5	45	25	52.5	10.2	1.2	20	900	15.4	9.3	9.1	14	30	1,080	70	
50	700	FE52G96A0506KA	A	G9	57.5	45	25	52.5	10.2	1.2	20	1000	16.2	8.4	9.1	14	30	1,080	70	
55	700	FE52GA6A0556KB	A	GA	57.5	45	30	52.5	20.3	1.2	20	1100	18.1	7.6	8.0	15	25	900	88	
60	700	FE52GA6A0606KB	A	GA	57.5	45	30	52.5	20.3	1.2	20	1200	18.9	7.0	8.0	15	25	900	88	
65	700	FE52GC6A0656KB	A	GC	57.5	50	35	52.5	20.3	1.2	20	1300	21.2	6.4	6.9	17	20	720	114	
70	700	FE52GC6A0706KB	A	GC	57.5	50	35	52.5	20.3	1.2	20	1400	22.0	6.0	6.9	17	20	720	114	
75	700	FE52GC6A0756KB	A	GC	57.5	50	35	52.5	20.3	1.2	20	1500	22.8	5.6	6.9	17	20	720	114	
80	700	FE52GC6A0806KB	A	GC	57.5	50	35	52.5	20.3	1.2	20	1600	23.6	5.2	6.9	17	20	720	114	
90	700	FE52GF6A0906KB	A	GF	57.5	60	35	52.5	20.3	1.2	20	1800	26.7	4.6	6.1	18	20	720	138	
100	700	FE52GF6A1070KB	A	GF	57.5	60	35	52.5	20.3	1.2	20	2000	28.1	4.2	6.1	18	20	720	138	
110	700	FE52GH6A1170KB	A	GH	57.5	65	35	52.5	20.3	1.2	20	2200	30.3	3.8	5.7	18	20	720	145	
110	700	FE52GE6A1170KB	A	GE	57.5	55	45	52.5	20.3	1.2	20	2200	31.2	3.8	5.4	19	15	540	162	
130	700	FE52GI6A1370KB	A	GI	57.5	65	45	52.5	20.3	1.2	20	2600	34.8	3.2	5.1	20	15	540	189	
					Voltage Vndc 800V						Voltage Code B									
15	800	FE37F66B0156KA	B	F6	42.0	40	20	37.5	10.2	1.2	35	525	11.2	11.5	13.9	14	56	1,344	41	
20	800	FE37FL6B0206KA	B	FL	42.0	37	28	37.5	10.2	1.2	35	700	13.8	8.6	12.2	15	42	1,008	52	
22	800	FE37FL6B0226KA	B	FL	42.0	37	28	37.5	10.2	1.2	35	770	14.4	7.9	12.2	15	42	1,008	52	
25	800	FE37F86B0256KA	B	F8	42.0	44	24	37.5	10.2	1.2	35	875	15.4	6.9	12.2	15	49	1,176	52	
25	800	FE37FR6B0256KA	B	FR	42.0	43	28	37.5	10.2	1.2	35	875	15.7	6.9	11.8	16	42	1,008	60	
30	800	FE37F96B0306KB	B	F9	42.0	45	30	37.5	20.3	1.2	35	1050	18.6	5.8	10.0	16	35	840	65	
35	800	FE37FX6B0356KB	B	FX	42.0	45	35	37.5	20.3	1.2	35	1225	21.1	4.9	9.1	17	35	840	82	
40	800	FE37FN6B0406KB	B	FN	42.0	50	35	37.5	20.3	1.2	35	1400	23.6	4.3	8.3	17	28	672	88	
45	800	FE37FT6B0456KB	B	FT	42.0	55	40	37.5	20.3	1.2	35	1575	26.0	3.8	7.7	18	28	672	110	
50	800	FE37FT6B0506KB	B	FT	42.0	55	40	37.5	20.3	1.2	35	1750	27.4	3.5	7.7	18	28	672	110	
55	800	FE37FT6B0556KB	B	FT	42.0	55	40	37.5	20.3	1.2	35	1925	28.8	3.1	7.7	18	28	672	110	
60	800	FE37FS6B0606KB	B	FS	42.0	60	45	37.5	20.3	1.2	35	2100	31.2	2.9	7.1	20	21	504	134	
65	800	FE37FS6B0656KB	B	FS	42.0	60	45	37.5	20.3	1.2	35	2275	32.5	2.7	7.1	20	21	504	134	
30	800	FE52G96B0306KA	B	G9	57.5	45	25	52.5	10.2	1.2	20	600	13.4	12.2	9.1	14	30	1,080	70	
35	800	FE52G96B0356KA	B	G9	57.5	45	25	52.5	10.2	1.2	20	700	14.5	10.5	9.1	14	30	1,080	70	
40	800	FE52GA6B0406KB	B	GA	57.5	45	30	52.5	20.3	1.2	20	800	16.5	9.1	8.0	15	25	900	88	
45	800	FE52GA6B0456KB	B	GA	57.5	45	30	52.5	20.3	1.2	20	900	17.5	8.1	8.0	15	25	900	88	
50	800	FE52GC6B0506KB	B	GC	57.5	50	35	52.5	20.3	1.2	20	1000	19.9	7.3	6.9	17	20	720	114	
55	800	FE52GC6B0556KB	B	GC	57.5	50	35	52.5	20.3	1.2	20	1100	20.9	6.7	6.9	17	20	720	114	
60	800	FE52GC6B0606KB	B	GC	57.5	50	35	52.5	20.3	1.2	20	1200	21.8	6.1	6.9	17	20	720	114	

DC FILTERING

FE - Standard 105°C *RoHS Compliant



RATING & PART NUMBER REFERENCE

Cap	Rated Voltage	KAVX PN	Voltage Code	Case Code	Dimensions						dv/dt	Peak Current	Irms	ESR 10KHz	Rth	ESL	SPQ	MOQ	Estimated Weight
					W ± 0.8	H ± 0.8	T ± 0.8	P1 ± 1.0	P2 ± 1.0	d ± 0.05									
uF	V				mm	mm	mm	mm	mm	mm	V/us	A	A	mΩ	°C/W	nH	pcs	pcs	g/pcs
70	800	FE52GF6B0706KB	B	GF	57.5	60	35	52.5	20.3	1.2	20	1400	25.1	5.2	6.1	18	20	720	138
75	800	FE52GF6B0756KB	B	GF	57.5	60	35	52.5	20.3	1.2	20	1500	26.0	4.9	6.1	18	20	720	138
85	800	FE52GH6B0856KB	B	GH	57.5	65	35	52.5	20.3	1.2	20	1700	28.5	4.3	5.7	18	20	720	145
85	800	FE52GE6B0856KB	B	GE	57.5	55	45	52.5	20.3	1.2	20	1700	29.3	4.3	5.4	19	15	540	162
100	800	FE52GI6B0107KB	B	GI	57.5	65	45	52.5	20.3	1.2	20	2000	32.6	3.7	5.1	20	15	540	189
110	800	FE52GI6B0117KB	B	GI	57.5	65	45	52.5	20.3	1.2	20	2200	34.2	3.3	5.1	20	15	540	189
Voltage Vdnc 900V																			
Voltage Code C																			
14	900	FE37F66C0146KA	C	F6	42.0	40	20	37.5	10.2	1.2	35	490	11.5	11.0	13.9	14	56	1,344	41
15	900	FE37F66C0156KA	C	F6	42.0	40	20	37.5	10.2	1.2	35	525	11.9	10.2	13.9	14	56	1,344	41
18	900	FE37FL6C0186KA	C	FL	42.0	37	28	37.5	10.2	1.2	35	630	13.9	8.5	12.2	15	42	1,008	52
20	900	FE37FL6C0206KA	C	FL	42.0	37	28	37.5	10.2	1.2	35	700	14.6	7.7	12.2	15	42	1,008	52
20	900	FE37F86C0206KA	C	F8	42.0	44	24	37.5	10.2	1.2	35	700	14.6	7.7	12.2	15	49	1,176	52
25	900	FE37F96C0256KB	C	F9	42.0	45	30	37.5	20.3	1.2	35	875	18.0	6.1	10.0	16	35	840	65
30	900	FE37FX6C0306KB	C	FX	42.0	45	35	37.5	20.3	1.2	35	1050	20.7	5.1	9.1	17	35	840	82
35	900	FE37FN6C0356KB	C	FN	42.0	50	35	37.5	20.3	1.2	35	1225	23.4	4.4	8.3	17	28	672	88
40	900	FE37FT6C0406KB	C	FT	42.0	55	40	37.5	20.3	1.2	35	1400	26.0	3.8	7.7	18	28	672	110
50	900	FE37FS6C0506KB	C	FS	42.0	60	45	37.5	20.3	1.2	35	1750	30.2	3.1	7.1	20	21	504	134
25	900	FE52G96C0256KA	C	G9	57.5	45	25	52.5	10.2	1.2	20	500	13.0	13.0	9.1	14	30	1,080	70
35	900	FE52GA6C0356KB	C	GA	57.5	45	30	52.5	20.3	1.2	20	700	16.4	9.3	8.0	15	25	900	88
45	900	FE52GC6C0456KB	C	GC	57.5	50	35	52.5	20.3	1.2	20	900	20.0	7.2	6.9	17	20	720	114
50	900	FE52GC6C0506KB	C	GC	57.5	50	35	52.5	20.3	1.2	20	1000	21.1	6.5	6.9	17	20	720	114
60	900	FE52GF6C0606KB	C	GF	57.5	60	35	52.5	20.3	1.2	20	1200	24.7	5.4	6.1	18	20	720	138
65	900	FE52GH6C0656KB	C	GH	57.5	65	35	52.5	20.3	1.2	20	1300	26.4	5.0	5.7	18	20	720	145
70	900	FE52GE6C0706KB	C	GE	57.5	55	45	52.5	20.3	1.2	20	1400	28.2	4.6	5.4	19	15	540	162
80	900	FE52GI6C0806KB	C	GI	57.5	65	45	52.5	20.3	1.2	20	1600	31.0	4.1	5.1	20	15	540	189
85	900	FE52GI6C0856KB	C	GI	57.5	65	45	52.5	20.3	1.2	20	1700	31.9	3.8	5.1	20	15	540	189
Voltage Vdnc 1000V																			
Voltage Code K																			
12	1000	FE37F66K0126KA	K	F6	42.0	40	20	37.5	10.2	1.2	35	420	11.2	11.5	13.9	14	56	1,344	41
12	1000	FE37FK6K0126KA	K	FK	42.0	37	22	37.5	10.2	1.2	35	420	11.0	11.5	14.3	14	49	1,176	40
14	1000	FE37FK6K0146KA	K	FK	42.0	37	22	37.5	10.2	1.2	35	490	11.9	9.9	14.3	14	49	1,176	40
15	1000	FE37F86K0156KA	K	F8	42.0	44	24	37.5	10.2	1.2	35	525	13.3	9.2	12.2	15	49	1,176	52
16	1000	FE37FR6K0166KA	K	FR	42.0	43	28	37.5	10.2	1.2	35	560	14.0	8.6	11.8	16	42	1,008	60
18	1000	FE37F96K0186KB	K	F9	42.0	45	30	37.5	20.3	1.2	35	630	16.1	7.7	10.0	16	35	840	65
20	1000	FE37F96K0206KB	K	F9	42.0	45	30	37.5	20.3	1.2	35	700	17.0	6.9	10.0	16	35	840	65
22	1000	FE37FX6K0226KB	K	FX	42.0	45	35	37.5	20.3	1.2	35	770	18.7	6.3	9.1	17	35	840	82
25	1000	FE37FN6K0256KB	K	FN	42.0	50	35	37.5	20.3	1.2	35	875	20.8	5.5	8.3	17	28	672	88
30	1000	FE37FT6K0306KB	K	FT	42.0	55	40	37.5	20.3	1.2	35	1050	23.8	4.6	7.7	18	28	672	110
35	1000	FE37FS6K0356KB	K	FS	42.0	60	45	37.5	20.3	1.2	35	1225	25.7	4.0	7.7	18	28	672	110
40	1000	FE37FS6K0406KB	K	FS	42.0	60	45	37.5	20.3	1.2	35	1400	28.5	3.5	7.1	20	21	504	134
25	1000	FE52G96K0256KA	K	G9	57.5	45	25	52.5	10.2	1.2	20	500	13.7	11.7	9.1	14	30	1,080	70
30	1000	FE52GA6K0306KB	K	GA	57.5	45	30	52.5	20.3	1.2	20	600	16.0	9.8	8.0	15	25	900	88
35	1000	FE52GA6K0356KB	K	GA	57.5	45	30	52.5	20.3	1.2	20	700	17.3	8.4	8.0	15	25	900	88
40	1000	FE52GC6K0406KB	K	GC	57.5	50	35	52.5	20.3	1.2	20	800	19.9	7.3	6.9	17	20	720	114
45	1000	FE52GF6K0456KB	K	GF	57.5	60	35	52.5	20.3	1.2	20	900	22.5	6.5	6.1	18	20	720	138
50	1000	FE52GF6K0506KB	K	GF	57.5	60	35	52.5	20.3	1.2	20	1000	23.7	5.9	6.1	18	20	720	138
55	1000	FE52GH6K0556KB	K	GH	57.5	65	35	52.5	20.3	1.2	20	1100	25.6	5.3	5.7	18	20	720	145
57	1000	FE52GE6K0576KB	K	GE	57.5	55	45	52.5	20.3	1.2	20	1140	26.8	5.1	5.4	19	15	540	162
65	1000	FE52GI6K0656KB	K	GI	57.5	65	45	52.5	20.3	1.2	20	1300	29.4	4.5	5.1	20	15	540	189
70	1000	FE52GI6K0706KB	K	GI	57.5	65	45	52.5	20.3	1.2	20	1400	30.5	4.2	5.1	20	15	540	189
Voltage Vdnc 1100V																			
Voltage Code L																			
8	1100	FE37F66L0805KA	L	F6	42.0	40	20	37.5	10.2	1.2	35	280	9.6	15.7	13.9	14	56	1,344	41
9	1100	FE37F66L0905KA	L	F6	42.0	40	20	37.5	10.2	1.2	35	315	10.2	14.0	13.9	14	56	1,344	41
10	1100	FE37FK6L0106KA	L	FK	42.0	37	22	37.5	10.2	1.2	35	350	10.6	12.6	14.3	14	49	1,176	40
10	1100	FE37FL6L0106KA	L	FL	42.0	37	28	37.5	10.2	1.2	35	350	11.4	12.6	12.2	15	42	1,008	52
12	1100	FE37FL6L0126KA	L	FL	42.0	37	28	37.5	10.2	1.2	35	420	12.5	10.5	12.2	15	42	1,008	52
12	1100	FE37F86L0126KA	L	F8	42.0	44	24	37.5	10.2	1.2	35	420	12.5	10.5	12.2	15	49	1,176	52
13	1100	FE37F86L0136KA	L	F8	42.0	44	24	37.5	10.2	1.2	35	455	13.0	9.7	12.2	15	49	1,176	52



The Important Information/Disclaimer is incorporated in the catalog where these specifications came from or available online at www.kyocera-avx.com/disclaimer/ by reference and should be reviewed in full before placing any order.

DC FILTERING

FE - Standard 105°C *RoHS Compliant

RATING & PART NUMBER REFERENCE

Cap	Rated Voltage	KAVX PN	Voltage Code	Case Code	Dimensions						dv/dt	Peak Current	I _{rms}	ESR 10KHz	R _{th}	ESL	SPQ	MOQ	Estimated Weight
					W ± 0.8	H ± 0.8	T ± 0.8	P1 ± 1.0	P2 ± 1.0	d ± 0.05									
uF	V				mm	mm	mm	mm	mm	mm	V/us	A	A	mΩ	°C/W	nH	pcs	pcs	g/pcs
15	1100	FE37FR6L0156KA	L	FR	42.0	43	28	37.5	10.2	1.2	35	525	14.2	8.4	11.8	16	42	1,008	60
16	1100	FE37F96L0166KB	L	F9	42.0	45	30	37.5	20.3	1.2	35	560	16.0	7.9	10.0	16	35	840	65
18	1100	FE37FX6L0186KB	L	FX	42.0	45	35	37.5	20.3	1.2	35	630	17.7	7.0	9.1	17	35	840	82
20	1100	FE37FN6L0206KB	L	FN	42.0	50	35	37.5	20.3	1.2	35	700	19.5	6.3	8.3	17	28	672	88
27	1100	FE37FT6L0276KB	L	FT	42.0	55	40	37.5	20.3	1.2	35	945	23.6	4.7	7.7	18	28	672	110
35	1100	FE37FS6L0356KB	L	FS	42.0	60	45	37.5	20.3	1.2	35	1225	27.9	3.6	7.1	20	21	504	134
25	1100	FE52GA6L0256KB	L	GA	57.5	45	30	52.5	20.3	1.2	20	500	15.3	10.6	8.0	15	25	900	88
30	1100	FE52GC6L0306KB	L	GC	57.5	50	35	52.5	20.3	1.2	20	600	18.1	8.9	6.9	17	20	720	114
40	1100	FE52GF6L0406KB	L	GF	57.5	60	35	52.5	20.3	1.2	20	800	22.3	6.7	6.1	18	20	720	138
45	1100	FE52GH6L0456KB	L	GH	57.5	65	35	52.5	20.3	1.2	20	900	24.3	5.9	5.7	18	20	720	145
47	1100	FE52GE6L0476KB	L	GE	57.5	55	45	52.5	20.3	1.2	20	940	25.6	5.7	5.4	19	15	540	162
50	1100	FE52GI6L0506KB	L	GI	57.5	65	45	52.5	20.3	1.2	20	1000	27.1	5.3	5.1	20	15	540	189
55	1100	FE52GI6L0556KB	L	GI	57.5	65	45	52.5	20.3	1.2	20	1100	28.4	4.8	5.1	20	15	540	189
Voltage V _{ndc} 1200V											Voltage Code P								
8	1200	FE37F66P0805KA	P	F6	42.0	40	20	37.5	10.2	1.2	35	280	10.0	14.4	13.9	14	56	1,344	41
10	1200	FE37FL6P0106KA	P	FL	42.0	37	28	37.5	10.2	1.2	35	350	11.9	11.5	12.2	15	42	1,008	52
11	1200	FE37F86P0116KA	P	F8	42.0	44	24	37.5	10.2	1.2	35	385	12.5	10.5	12.2	15	49	1,176	52
12	1200	FE37FR6P0126KA	P	FR	42.0	43	28	37.5	10.2	1.2	35	420	13.3	9.6	11.8	16	42	1,008	60
13	1200	FE37FR6P0136KA	P	FR	42.0	43	28	37.5	10.2	1.2	35	455	13.8	8.9	11.8	16	42	1,008	60
14	1200	FE37F96P0146KB	P	F9	42.0	45	30	37.5	20.3	1.2	35	490	15.6	8.2	10.0	16	35	840	65
15	1200	FE37FX6P0156KB	P	FX	42.0	45	35	37.5	20.3	1.2	35	525	16.9	7.7	9.1	17	35	840	82
16	1200	FE37FX6P0166KB	P	FX	42.0	45	35	37.5	20.3	1.2	35	560	17.5	7.2	9.1	17	35	840	82
18	1200	FE37FN6P0186KB	P	FN	42.0	50	35	37.5	20.3	1.2	35	630	19.4	6.4	8.3	17	28	672	88
22	1200	FE37FT6P0226KB	P	FT	42.0	55	40	37.5	20.3	1.2	35	770	22.3	5.2	7.7	18	28	672	110
23	1200	FE37FT6P0236KB	P	FT	42.0	55	40	37.5	20.3	1.2	35	805	22.8	5.0	7.7	18	28	672	110
30	1200	FE37FS6P0306KB	P	FS	42.0	60	45	37.5	20.3	1.2	35	1050	27.0	3.8	7.1	20	21	504	134
15	1200	FE52G96P0156KA	P	G9	57.5	45	25	52.5	10.2	1.2	20	300	11.6	16.3	9.1	14	30	1,080	70
20	1200	FE52GA6P0206KB	P	GA	57.5	45	30	52.5	20.3	1.2	20	400	14.3	12.2	8.0	15	25	900	88
25	1200	FE52GC6P0256KB	P	GC	57.5	50	35	52.5	20.3	1.2	20	500	17.2	9.8	6.9	17	20	720	114
33	1200	FE52GF6P0336KB	P	GF	57.5	60	35	52.5	20.3	1.2	20	660	21.1	7.4	6.1	18	20	720	138
38	1200	FE52GH6P0386KB	P	GH	57.5	65	35	52.5	20.3	1.2	20	760	23.4	6.4	5.7	18	20	720	145
40	1200	FE52GE6P0406KB	P	GE	57.5	55	45	52.5	20.3	1.2	20	800	24.6	6.1	5.4	19	15	540	162
45	1200	FE52GI6P0456KB	P	GI	57.5	65	45	52.5	20.3	1.2	20	900	26.8	5.4	5.1	20	15	540	189

DC FILTERING

FE - THB Grade IIIB 105°C *RoHS Compliant



CASE CODE

Case Code	Dimensions											
	W ± 0.8(0.03)		H ± 0.8(0.03)		T ± 0.8(0.03)		P1 ± 1.0(0.04)		P2 ± 1.0(0.04)		d ± 0.05(0.002)	
	mm	in	mm	in	mm	in	mm	in	mm	in	mm	in
FK	42.0	(1.65)	37.0	(1.46)	22.0	(0.87)	37.5	(1.48)	10.2	(0.40)	1.2	(0.05)
FL	42.0	(1.65)	37.0	(1.46)	28.0	(1.10)	37.5	(1.48)	10.2	(0.40)	1.2	(0.05)
F6	42.0	(1.65)	40.0	(1.57)	20.0	(0.79)	37.5	(1.48)	10.2	(0.40)	1.2	(0.05)
FR	42.0	(1.65)	43.0	(1.69)	28.0	(1.10)	37.5	(1.48)	10.2	(0.40)	1.2	(0.05)
F8	42.0	(1.65)	44.0	(1.73)	24.0	(0.94)	37.5	(1.48)	10.2	(0.40)	1.2	(0.05)
F9	42.0	(1.65)	45.0	(1.77)	30.0	(1.18)	37.5	(1.48)	20.3	(0.80)	1.2	(0.05)
FX	42.0	(1.65)	45.0	(1.77)	35.0	(1.38)	37.5	(1.48)	20.3	(0.80)	1.2	(0.05)
FN	42.0	(1.65)	50.0	(1.97)	35.0	(1.38)	37.5	(1.48)	20.3	(0.80)	1.2	(0.05)
FT	42.0	(1.65)	55.0	(2.17)	40.0	(1.57)	37.5	(1.48)	20.3	(0.80)	1.2	(0.05)
FS	42.0	(1.65)	60.0	(2.36)	45.0	(1.77)	37.5	(1.48)	20.3	(0.80)	1.2	(0.05)
G9	57.5	(2.26)	45.0	(1.77)	25.0	(0.98)	52.5	(2.07)	10.2	(0.40)	1.2	(0.05)
GA	57.5	(2.26)	45.0	(1.77)	30.0	(1.18)	52.5	(2.07)	20.3	(0.80)	1.2	(0.05)
GC	57.5	(2.26)	50.0	(1.97)	35.0	(1.38)	52.5	(2.07)	20.3	(0.80)	1.2	(0.05)
GE	57.5	(2.26)	55.0	(2.17)	45.0	(1.77)	52.5	(2.07)	20.3	(0.80)	1.2	(0.05)
GF	57.5	(2.26)	60.0	(2.36)	35.0	(1.38)	52.5	(2.07)	20.3	(0.80)	1.2	(0.05)
GH	57.5	(2.26)	65.0	(2.56)	35.0	(1.38)	52.5	(2.07)	20.3	(0.80)	1.2	(0.05)
GI	57.5	(2.26)	65.0	(2.56)	45.0	(1.77)	52.5	(2.07)	20.3	(0.80)	1.2	(0.05)

RATING & PART NUMBER REFERENCE

Cap uF	Rated V	KAVX PN	Voltage Code	Case Code	Dimensions						dv/dt V/us	Peak Current A	Irms A	ESR 10KHz mΩ	Rth °C/W	ESL nH	SPQ pcs	MOQ pcs	Estimated Weight g/pcs
					W ± 0.8	H ± 0.8	T ± 0.8	P1 ± 1.0	P2 ± 1.0	d ± 0.05									
					mm	mm	mm	mm	mm	mm									
Voltage Vndc 450V																			
Voltage Code I																			
30	450	FE37FK7I0306KA	I	FK	42.0	37	22	37.5	10.2	1.2	35	1050	11.0	9.2	14.3	14	49	1,176	40
35	450	FE37FK7I0356KA	I	FK	42.0	37	22	37.5	10.2	1.2	35	1225	13.3	7.9	14.3	14	49	1,176	40
40	450	FE37F67I0406KA	I	F6	42.0	40	20	37.5	10.2	1.2	35	1400	14.4	6.9	13.9	14	56	1,344	41
40	450	FE37FK7I0406KA	I	FK	42.0	37	22	37.5	10.2	1.2	35	1400	14.2	6.9	14.3	14	49	1,176	40
50	450	FE37FL7I0506KA	I	FL	42.0	37	28	37.5	10.2	1.2	35	1750	17.2	5.5	12.2	15	42	1,008	52
55	450	FE37F87I0556KA	I	F8	42.0	44	24	37.5	10.2	1.2	35	1925	18.1	5.0	12.2	15	49	1,176	52
60	450	FE37FR7I0606KA	I	FR	42.0	43	28	37.5	10.2	1.2	35	2100	18.9	4.6	11.8	16	42	1,008	60
65	450	FE37F97I0656KB	I	F9	42.0	45	30	37.5	20.3	1.2	35	2275	19.6	4.3	10.0	16	35	840	65
70	450	FE37F97I0706KB	I	F9	42.0	45	30	37.5	20.3	1.2	35	2450	20.7	4.0	10.0	16	35	840	65
80	450	FE37FX7I0806KB	I	FX	42.0	45	35	37.5	20.3	1.2	35	2800	24.1	3.5	9.1	17	35	840	82
90	450	FE37FN7I0906KB	I	FN	42.0	50	35	37.5	20.3	1.2	35	3150	27.9	3.1	8.3	17	28	672	88
110	450	FE37FT7I0117KB	I	FT	42.0	55	40	37.5	20.3	1.2	35	3850	30.9	2.5	7.7	18	28	672	110
120	450	FE37FT7I0127KB	I	FT	42.0	55	40	37.5	20.3	1.2	35	4200	32.3	2.3	7.7	18	28	672	110
140	450	FE37FS7I0147KB	I	FS	42.0	60	45	37.5	20.3	1.2	35	4900	34.9	2.0	7.1	20	21	504	134
80	450	FE52GA7I0806KA	I	G9	57.5	45	25	52.5	10.2	1.2	20	1600	17.3	7.3	9.1	14	30	1,080	70
100	450	FE52GA7I0107KB	I	GA	57.5	45	30	52.5	20.3	1.2	20	2000	19.4	5.9	8.0	15	25	900	88
130	450	FE52GC7I0137KB	I	GC	57.5	50	35	52.5	20.3	1.2	20	2600	23.6	4.5	6.9	17	20	720	114
160	450	FE52GF7I0167KB	I	GF	57.5	60	35	52.5	20.3	1.2	20	3200	28.2	3.7	6.1	18	20	720	138
170	450	FE52GE7I0177KB	I	GE	57.5	55	45	52.5	20.3	1.2	20	3400	30.9	3.4	5.4	19	15	540	162
180	450	FE52GH7I0187KB	I	GH	57.5	65	35	52.5	20.3	1.2	20	3600	31.9	3.3	5.7	18	20	720	145
180	450	FE52GE7I0187KB	I	GE	57.5	55	45	52.5	20.3	1.2	20	3600	31.9	3.3	5.4	19	15	540	162
210	450	FE52GI7I0217KB	I	GI	57.5	65	45	52.5	20.3	1.2	20	4200	35.4	2.8	5.1	20	15	540	189
220	450	FE52GI7I0227KB	I	GI	57.5	65	45	52.5	20.3	1.2	20	4400	37.3	2.7	5.1	20	15	540	189
Voltage Vndc 500V																			
Voltage Code H																			
30	500	FE37FK7H0306KA	H	FK	42.0	37	22	37.5	10.2	1.2	35	1050	12.8	8.5	14.3	14	49	1,176	40
35	500	FE37FK7H0356KA	H	FK	42.0	37	22	37.5	10.2	1.2	35	1225	13.8	7.3	14.3	14	49	1,176	40
40	500	FE37F67H0406KA	H	F6	42.0	40	20	37.5	10.2	1.2	35	1400	15.0	6.4	13.9	14	56	1,344	41
40	500	FE37FK7H0406KA	H	FK	42.0	37	22	37.5	10.2	1.2	35	1400	14.8	6.4	14.3	14	49	1,176	40
50	500	FE37FL7H0506KA	H	FL	42.0	37	28	37.5	10.2	1.2	35	1750	17.9	5.1	12.2	15	42	1,008	52

DC FILTERING

FE - THB Grade IIIB 105°C *RoHS Compliant

RATING & PART NUMBER REFERENCE

Cap	Rated	KAVX PN	Voltage Code	Case Code	Dimensions						dv/dt	Peak Current	I _{rms}	ESR 10KHz	R _{th}	ESL	SPQ	MOQ	Estimated Weight
					W	H	T	P1	P2	d									
					± 0.8 mm	± 0.8 mm	± 0.8 mm	± 1.0 mm	± 1.0 mm	± 0.05 mm									
uF	V									V/us	A	A	mΩ	°C/W	nH	pcs	pcs	g/pcs	
55	500	FE37F87H0556KA	H	F8	42.0	44	24	37.5	10.2	1.2	35	1925	18.8	4.7	12.2	15	49	1,176	52
60	500	FE37FR7H0606KA	H	FR	42.0	43	28	37.5	10.2	1.2	35	2100	20.0	4.3	11.8	16	42	1,008	60
65	500	FE37F97H0656KB	H	F9	42.0	45	30	37.5	20.3	1.2	35	2275	22.5	3.9	10.0	16	35	840	65
70	500	FE37F97H0706KB	H	F9	42.0	45	30	37.5	20.3	1.2	35	2450	23.4	3.7	10.0	16	35	840	65
80	500	FE37FX7H0806KB	H	FX	42.0	45	35	37.5	20.3	1.2	35	2800	26.2	3.2	9.1	17	35	840	82
90	500	FE37FN7H0906KB	H	FN	42.0	50	35	37.5	20.3	1.2	35	3150	29.0	2.8	8.3	17	28	672	88
110	500	FE37FT7H0117KB	H	FT	42.0	55	40	37.5	20.3	1.2	35	3850	33.4	2.3	7.7	18	28	672	110
120	500	FE37FT7H0127KB	H	FT	42.0	55	40	37.5	20.3	1.2	35	4200	34.9	2.1	7.7	18	28	672	110
140	500	FE37FS7H0147KB	H	FS	42.0	60	45	37.5	20.3	1.2	35	4900	39.1	1.8	7.1	20	21	504	134
80	500	FE52G97H0806KA	H	G9	57.5	45	25	52.5	10.2	1.2	20	1600	18.0	6.8	9.1	14	30	1,080	70
100	500	FE52GA7H0107KB	H	GA	57.5	45	30	52.5	20.3	1.2	20	2000	21.5	5.4	8.0	15	25	900	88
130	500	FE52GC7H0137KB	H	GC	57.5	50	35	52.5	20.3	1.2	20	2600	26.4	4.2	6.9	17	20	720	114
160	500	FE52GF7H0167KB	H	GF	57.5	60	35	52.5	20.3	1.2	20	3200	31.2	3.4	6.1	18	20	720	138
170	500	FE52GE7H0177KB	H	GE	57.5	55	45	52.5	20.3	1.2	20	3400	33.1	3.2	5.4	19	15	540	162
180	500	FE52GH7H0187KB	H	GH	57.5	65	35	52.5	20.3	1.2	20	3600	34.1	3.0	5.7	18	20	720	145
180	500	FE52GE7H0187KB	H	GE	57.5	55	45	52.5	20.3	1.2	20	3600	35.1	3.0	5.4	19	15	540	162
210	500	FE52GI7H0217KB	H	GI	57.5	65	45	52.5	20.3	1.2	20	4200	38.9	2.6	5.1	20	15	540	189
220	500	FE52GI7H0227KB	H	GI	57.5	65	45	52.5	20.3	1.2	20	4400	39.8	2.5	5.1	20	15	540	189
Voltage V _{ndc} 550V										Voltage Code J									
30	550	FE37FK7J0306KA	J	FK	42.0	37	22	37.5	10.2	1.2	35	1050	13.5	7.7	14.3	14	49	1,176	40
40	550	FE37F87J0406KA	J	F8	42.0	44	24	37.5	10.2	1.2	35	1400	16.9	5.8	12.2	15	49	1,176	52
50	550	FE37FR7J0506KA	J	FR	42.0	43	28	37.5	10.2	1.2	35	1750	19.2	4.6	11.8	16	42	1,008	60
60	550	FE37F97J0606KB	J	F9	42.0	45	30	37.5	20.3	1.2	35	2100	22.8	3.8	10.0	16	35	840	65
70	550	FE37FN7J0706KB	J	FN	42.0	50	35	37.5	20.3	1.2	35	2450	27.0	3.3	8.3	17	28	672	88
80	550	FE37FT7J0806KB	J	FT	42.0	55	40	37.5	20.3	1.2	35	2800	30.0	2.9	7.7	18	28	672	110
90	550	FE37FT7J0906KB	J	FT	42.0	55	40	37.5	20.3	1.2	35	3150	31.9	2.6	7.7	18	28	672	110
100	550	FE37FT7J0107KB	J	FT	42.0	55	40	37.5	20.3	1.2	35	3500	33.6	2.3	7.7	18	28	672	110
110	550	FE37FS7J0117KB	J	FS	42.0	60	45	37.5	20.3	1.2	35	3850	36.6	2.1	7.1	20	21	504	134
120	550	FE37FS7J0127KB	J	FS	42.0	60	45	37.5	20.3	1.2	35	4200	38.2	1.9	7.1	20	21	504	134
70	550	FE52G97J0706KA	J	G9	57.5	45	25	52.5	10.2	1.2	20	1400	17.8	7.0	9.1	14	30	1,080	70
80	550	FE52GA7J0806KB	J	GA	57.5	45	30	52.5	20.3	1.2	20	1600	20.2	6.1	8.0	15	25	900	88
90	550	FE52GC7J0906KB	J	GC	57.5	50	35	52.5	20.3	1.2	20	1800	23.1	5.4	6.9	17	20	720	114
110	550	FE52GC7J0117KB	J	GC	57.5	50	35	52.5	20.3	1.2	20	2200	25.6	4.4	6.9	17	20	720	114
130	550	FE52GF7J0137KB	J	GF	57.5	60	35	52.5	20.3	1.2	20	2600	29.7	3.8	6.1	18	20	720	138
140	550	FE52GF7J0147KB	J	GF	57.5	60	35	52.5	20.3	1.2	20	2800	30.8	3.5	6.1	18	20	720	138
140	550	FE52GH7J0147KB	J	GH	57.5	65	35	52.5	20.3	1.2	20	2800	31.7	3.5	5.7	18	20	720	145
140	550	FE52GE7J0147KB	J	GE	57.5	55	45	52.5	20.3	1.2	20	2800	32.6	3.5	5.4	19	15	540	162
150	550	FE52GE7J0157KB	J	GE	57.5	55	45	52.5	20.3	1.2	20	3000	33.7	3.3	5.4	19	15	540	162
170	550	FE52GI7J0177KB	J	GI	57.5	65	45	52.5	20.3	1.2	20	3400	36.9	2.9	5.1	20	15	540	189
190	550	FE52GI7J0197KB	J	GI	57.5	65	45	52.5	20.3	1.2	20	3800	39.0	2.6	5.1	20	15	540	189
Voltage V _{ndc} 600V										Voltage Code Q									
22	600	FE37F67Q0226KA	Q	F6	42.0	40	20	37.5	10.2	1.2	35	770	12.7	9.0	13.9	14	56	1,344	41
25	600	FE37F67Q0256KA	Q	F6	42.0	40	20	37.5	10.2	1.2	35	875	13.5	7.9	13.9	14	56	1,344	41
30	600	FE37FL7Q0306KA	Q	FL	42.0	37	28	37.5	10.2	1.2	35	1050	15.8	6.6	12.2	15	42	1,008	52
33	600	FE37F87Q0336KA	Q	F8	42.0	44	24	37.5	10.2	1.2	35	1155	16.6	6.0	12.2	15	49	1,176	52
35	600	FE37FR7Q0356KA	Q	FR	42.0	43	28	37.5	10.2	1.2	35	1225	17.4	5.6	11.8	16	42	1,008	60
40	600	FE37F97Q0406KB	Q	F9	42.0	45	30	37.5	20.3	1.2	35	1400	20.1	4.9	10.0	16	35	840	65
45	600	FE37F97Q0456KB	Q	F9	42.0	45	30	37.5	20.3	1.2	35	1575	21.3	4.4	10.0	16	35	840	65
45	600	FE37FX7Q0456KB	Q	FX	42.0	45	35	37.5	20.3	1.2	35	1575	22.4	4.4	9.1	17	35	840	82
50	600	FE37FX7Q0506KB	Q	FX	42.0	45	35	37.5	20.3	1.2	35	1750	23.6	4.0	9.1	17	35	840	82
50	600	FE37FN7Q0506KB	Q	FN	42.0	50	35	37.5	20.3	1.2	35	1750	24.6	4.0	8.3	17	28	672	88
60	600	FE37FT7Q0606KB	Q	FT	42.0	55	40	37.5	20.3	1.2	35	2100	28.1	3.3	7.7	18	28	672	110
70	600	FE37FT7Q0706KB	Q	FT	42.0	55	40	37.5	20.3	1.2	35	2450	30.4	2.8	7.7	18	28	672	110

DC FILTERING

FE - THB Grade IIIB 105°C *RoHS Compliant



RATING & PART NUMBER REFERENCE

Cap	Rated	KAVX PN	Voltage Code	Case Code	Dimensions						dv/dt	Peak Current	Irms	ESR 10KHz	Rth	ESL	SPQ	MOQ	Estimated Weight
					W ± 0.8	H ± 0.8	T ± 0.8	P1 ± 1.0	P2 ± 1.0	d ± 0.05									
uF	V				mm	mm	mm	mm	mm	mm	V/us	A	A	mΩ	°C/W	nH	pcs	pcs	g/pcs
75	600	FE37FS7Q0756KB	Q	FS	42.0	60	45	37.5	20.3	1.2	35	2625	32.6	2.6	7.1	20	21	504	134
80	600	FE37FS7Q0806KB	Q	FS	42.0	60	45	37.5	20.3	1.2	35	2800	33.7	2.5	7.1	20	21	504	134
85	600	FE37FS7Q0856KB	Q	FS	42.0	60	45	37.5	20.3	1.2	35	2975	34.7	2.3	7.1	20	21	504	134
45	600	FE52G97Q0456KA	Q	G9	57.5	45	25	52.5	10.2	1.2	20	900	15.4	9.3	9.1	14	30	1,080	70
50	600	FE52G97Q0506KA	Q	G9	57.5	45	25	52.5	10.2	1.2	20	1000	16.2	8.4	9.1	14	30	1,080	70
55	600	FE52GA7Q0556KB	Q	GA	57.5	45	30	52.5	20.3	1.2	20	1100	18.1	7.6	8.0	15	25	900	88
60	600	FE52GA7Q0606KB	Q	GA	57.5	45	30	52.5	20.3	1.2	20	1200	18.9	7.0	8.0	15	25	900	88
65	600	FE52GC7Q0656KB	Q	GC	57.5	50	35	52.5	20.3	1.2	20	1300	21.2	6.4	6.9	17	20	720	114
70	600	FE52GC7Q0706KB	Q	GC	57.5	50	35	52.5	20.3	1.2	20	1400	22.0	6.0	6.9	17	20	720	114
75	600	FE52GC7Q0756KB	Q	GC	57.5	50	35	52.5	20.3	1.2	20	1500	22.8	5.6	6.9	17	20	720	114
80	600	FE52GC7Q0806KB	Q	GC	57.5	50	35	52.5	20.3	1.2	20	1600	23.6	5.2	6.9	17	20	720	114
90	600	FE52GF7Q0906KB	Q	GF	57.5	60	35	52.5	20.3	1.2	20	1800	26.7	4.6	6.1	18	20	720	138
100	600	FE52GF7Q0107KB	Q	GF	57.5	60	35	52.5	20.3	1.2	20	2000	28.1	4.2	6.1	18	20	720	138
110	600	FE52GH7Q0117KB	Q	GH	57.5	65	35	52.5	20.3	1.2	20	2200	30.3	3.8	5.7	18	20	720	145
110	600	FE52GE7Q0117KB	Q	GE	57.5	55	45	52.5	20.3	1.2	20	2200	31.2	3.8	5.4	19	15	540	162
130	600	FE52GI7Q0137KB	Q	GI	57.5	65	45	52.5	20.3	1.2	20	2600	34.8	3.2	5.1	20	15	540	189
Voltage Vndc 700V																			
Voltage Code A																			
22	700	FE37F67A0226KA	A	F6	42.0	40	20	37.5	10.2	1.2	35	770	12.7	9.0	13.9	14	56	1,344	41
25	700	FE37F67A0256KA	A	F6	42.0	40	20	37.5	10.2	1.2	35	875	13.5	7.9	13.9	14	56	1,344	41
30	700	FE37FL7A0306KA	A	FL	42.0	37	28	37.5	10.2	1.2	35	1050	15.8	6.6	12.2	15	42	1,008	52
33	700	FE37F87A0336KA	A	F8	42.0	44	24	37.5	10.2	1.2	35	1155	16.6	6.0	12.2	15	49	1,176	52
40	700	FE37F97A0406KB	A	F9	42.0	45	30	37.5	20.3	1.2	35	1400	20.1	4.9	10.0	16	35	840	65
45	700	FE37FX7A0456KB	A	FX	42.0	45	35	37.5	20.3	1.2	35	1575	22.4	4.4	9.1	17	35	840	82
50	700	FE37FN7A0506KB	A	FN	42.0	50	35	37.5	20.3	1.2	35	1750	24.6	4.0	8.3	17	28	672	88
60	700	FE37FT7A0606KB	A	FT	42.0	55	40	37.5	20.3	1.2	35	2100	28.1	3.3	7.7	18	28	672	110
70	700	FE37FT7A0706KB	A	FT	42.0	55	40	37.5	20.3	1.2	35	2450	30.4	2.8	7.7	18	28	672	110
75	700	FE37FS7A0756KB	A	FS	42.0	60	45	37.5	20.3	1.2	35	2625	32.6	2.6	7.1	20	21	504	134
80	700	FE37FS7A0806KB	A	FS	42.0	60	45	37.5	20.3	1.2	35	2800	33.7	2.5	7.1	20	21	504	134
85	700	FE37FS7A0856KB	A	FS	42.0	60	45	37.5	20.3	1.2	35	2975	34.7	2.3	7.1	20	21	504	134
45	700	FE52G97A0456KA	A	G9	57.5	45	25	52.5	10.2	1.2	20	900	15.4	9.3	9.1	14	30	1,080	70
50	700	FE52G97A0506KA	A	G9	57.5	45	25	52.5	10.2	1.2	20	1000	16.2	8.4	9.1	14	30	1,080	70
55	700	FE52GA7A0556KB	A	GA	57.5	45	30	52.5	20.3	1.2	20	1100	18.1	7.6	8.0	15	25	900	88
60	700	FE52GA7A0606KB	A	GA	57.5	45	30	52.5	20.3	1.2	20	1200	18.9	7.0	8.0	15	25	900	88
65	700	FE52GC7A0656KB	A	GC	57.5	50	35	52.5	20.3	1.2	20	1300	21.2	6.4	6.9	17	20	720	114
70	700	FE52GC7A0706KB	A	GC	57.5	50	35	52.5	20.3	1.2	20	1400	22.0	6.0	6.9	17	20	720	114
75	700	FE52GC7A0756KB	A	GC	57.5	50	35	52.5	20.3	1.2	20	1500	22.8	5.6	6.9	17	20	720	114
80	700	FE52GC7A0806KB	A	GC	57.5	50	35	52.5	20.3	1.2	20	1600	23.6	5.2	6.9	17	20	720	114
90	700	FE52GF7A0906KB	A	GF	57.5	60	35	52.5	20.3	1.2	20	1800	26.7	4.6	6.1	18	20	720	138
100	700	FE52GF7A0107KB	A	GF	57.5	60	35	52.5	20.3	1.2	20	2000	28.1	4.2	6.1	18	20	720	138
110	700	FE52GH7A0117KB	A	GH	57.5	65	35	52.5	20.3	1.2	20	2200	30.3	3.8	5.7	18	20	720	145
110	700	FE52GE7A0117KB	A	GE	57.5	55	45	52.5	20.3	1.2	20	2200	31.2	3.8	5.4	19	15	540	162
130	700	FE52GI7A0137KB	A	GI	57.5	65	45	52.5	20.3	1.2	20	2600	34.8	3.2	5.1	20	15	540	189
Voltage Vndc 800V																			
Voltage Code B																			
15	800	FE37F67B0156KA	B	F6	42.0	40	20	37.5	10.2	1.2	35	525	11.2	11.5	13.9	14	56	1,344	41
20	800	FE37FL7B0206KA	B	FL	42.0	37	28	37.5	10.2	1.2	35	700	13.8	8.6	12.2	15	42	1,008	52
22	800	FE37FL7B0226KA	B	FL	42.0	37	28	37.5	10.2	1.2	35	770	14.4	7.9	12.2	15	42	1,008	52
25	800	FE37F87B0256KA	B	F8	42.0	44	24	37.5	10.2	1.2	35	875	15.4	6.9	12.2	15	49	1,176	52
25	800	FE37FR7B0256KA	B	FR	42.0	43	28	37.5	10.2	1.2	35	875	15.7	6.9	11.8	16	42	1,008	60
30	800	FE37F97B0306KB	B	F9	42.0	45	30	37.5	20.3	1.2	35	1050	18.6	5.8	10.0	16	35	840	65
35	800	FE37FX7B0356KB	B	FX	42.0	45	35	37.5	20.3	1.2	35	1225	21.1	4.9	9.1	17	35	840	82
40	800	FE37FN7B0406KB	B	FN	42.0	50	35	37.5	20.3	1.2	35	1400	23.6	4.3	8.3	17	28	672	88
45	800	FE37FT7B0456KB	B	FT	42.0	55	40	37.5	20.3	1.2	35	1575	26.0	3.8	7.7	18	28	672	110
50	800	FE37FT7B0506KB	B	FT	42.0	55	40	37.5	20.3	1.2	35	1750	27.4	3.5	7.7	18	28	672	110
55	800	FE37FT7B0556KB	B	FT	42.0	55	40	37.5	20.3	1.2	35	1925	28.8	3.1	7.7	18	28	672	110
60	800	FE37FS7B0606KB	B	FS	42.0	60	45	37.5	20.3	1.2	35	2100	31.2	2.9	7.1	20	21	504	134
65	800	FE37FS7B0656KB	B	FS	42.0	60	45	37.5	20.3	1.2	35	2275	32.5	2.7	7.1	20	21	504	134
30	800	FE52G97B0306KA	B	G9	57.5	45	25	52.5	10.2	1.2	20	900	13.4	12.2	9.1	14	30	1,080	70

DC FILTERING

FE - THB Grade IIIB 105°C *RoHS Compliant



RATING & PART NUMBER REFERENCE

Cap	Rated	KAVX PN	Voltage Code	Case Code	Dimensions						dv/dt	Peak Current	Irms	ESR 10KHz	Rth	ESL	SPQ	MOQ	Estimated Weight					
					W ± 0.8	H ± 0.8	T ± 0.8	P1 ± 1.0	P2 ± 1.0	d ± 0.05														
uF	V				mm	mm	mm	mm	mm	mm	V/us	A	A	mΩ	°C/W	nH	pcs	pcs	g/pcs					
35	800	FE52G97B0356KA	B	G9	57.5	45	25	52.5	10.2	1.2	20	700	14.5	10.5	9.1	14	30	1,080	70					
40	800	FE52GA7B0406KB	B	GA	57.5	45	30	52.5	20.3	1.2	20	800	16.5	9.1	8.0	15	25	900	88					
45	800	FE52GA7B0456KB	B	GA	57.5	45	30	52.5	20.3	1.2	20	900	17.5	8.1	8.0	15	25	900	88					
50	800	FE52GC7B0506KB	B	GC	57.5	50	35	52.5	20.3	1.2	20	1000	19.9	7.3	6.9	17	20	720	114					
55	800	FE52GC7B0556KB	B	GC	57.5	50	35	52.5	20.3	1.2	20	1100	20.9	6.7	6.9	17	20	720	114					
60	800	FE52GC7B0606KB	B	GC	57.5	50	35	52.5	20.3	1.2	20	1200	21.8	6.1	6.9	17	20	720	114					
70	800	FE52GF7B0706KB	B	GF	57.5	60	35	52.5	20.3	1.2	20	1400	25.1	5.2	6.1	18	20	720	138					
75	800	FE52GF7B0756KB	B	GF	57.5	60	35	52.5	20.3	1.2	20	1500	26.0	4.9	6.1	18	20	720	138					
85	800	FE52GH7B0856KB	B	GH	57.5	65	35	52.5	20.3	1.2	20	1700	28.5	4.3	5.7	18	20	720	145					
85	800	FE52GE7B0856KB	B	GE	57.5	55	45	52.5	20.3	1.2	20	1700	29.3	4.3	5.4	19	15	540	162					
100	800	FE52GI7B0107KB	B	GI	57.5	65	45	52.5	20.3	1.2	20	2000	32.6	3.7	5.1	20	15	540	189					
110	800	FE52GI7B0117KB	B	GI	57.5	65	45	52.5	20.3	1.2	20	2200	34.2	3.3	5.1	20	15	540	189					
Voltage Vndc 900V																			Voltage Code C					
14	900	FE37F67C0146KA	C	F6	42.0	40	20	37.5	10.2	1.2	35	490	11.5	11.0	13.9	14	56	1,344	41					
15	900	FE37F67C0156KA	C	F6	42.0	40	20	37.5	10.2	1.2	35	525	11.9	10.2	13.9	14	56	1,344	41					
18	900	FE37FL7C0186KA	C	FL	42.0	37	28	37.5	10.2	1.2	35	630	13.9	8.5	12.2	15	42	1,008	52					
20	900	FE37FL7C0206KA	C	FL	42.0	37	28	37.5	10.2	1.2	35	700	14.6	7.7	12.2	15	42	1,008	52					
20	900	FE37F87C0206KA	C	F8	42.0	44	24	37.5	10.2	1.2	35	700	14.6	7.7	12.2	15	49	1,176	52					
25	900	FE37F97C0256KB	C	F9	42.0	45	30	37.5	20.3	1.2	35	875	18.0	6.1	10.0	16	35	840	65					
30	900	FE37FX7C0306KB	C	FX	42.0	45	35	37.5	20.3	1.2	35	1050	20.7	5.1	9.1	17	35	840	82					
35	900	FE37FN7C0356KB	C	FN	42.0	50	35	37.5	20.3	1.2	35	1225	23.4	4.4	8.3	17	28	672	88					
40	900	FE37FT7C0406KB	C	FT	42.0	55	40	37.5	20.3	1.2	35	1400	26.0	3.8	7.7	18	28	672	110					
50	900	FE37FS7C0506KB	C	FS	42.0	60	45	37.5	20.3	1.2	35	1750	30.2	3.1	7.1	20	21	504	134					
25	900	FE52G97C0256KA	C	G9	57.5	45	25	52.5	10.2	1.2	20	500	13.0	13.0	9.1	14	30	1,080	70					
35	900	FE52GA7C0356KB	C	GA	57.5	45	30	52.5	20.3	1.2	20	700	16.4	9.3	8.0	15	25	900	88					
45	900	FE52GC7C0456KB	C	GC	57.5	50	35	52.5	20.3	1.2	20	900	20.0	7.2	6.9	17	20	720	114					
50	900	FE52GC7C0506KB	C	GC	57.5	50	35	52.5	20.3	1.2	20	1000	21.1	6.5	6.9	17	20	720	114					
60	900	FE52GF7C0606KB	C	GF	57.5	60	35	52.5	20.3	1.2	20	1200	24.7	5.4	6.1	18	20	720	138					
65	900	FE52GH7C0656KB	C	GH	57.5	65	35	52.5	20.3	1.2	20	1300	26.4	5.0	5.7	18	20	720	145					
70	900	FE52GE7C0706KB	C	GE	57.5	55	45	52.5	20.3	1.2	20	1400	28.2	4.6	5.4	19	15	540	162					
80	900	FE52GI7C0806KB	C	GI	57.5	65	45	52.5	20.3	1.2	20	1600	31.0	4.1	5.1	20	15	540	189					
85	900	FE52GI7C0856KB	C	GI	57.5	65	45	52.5	20.3	1.2	20	1700	31.9	3.8	5.1	20	15	540	189					
Voltage Vndc 1000V																			Voltage Code K					
12	1000	FE37F67K0126KA	K	F6	42.0	40	20	37.5	10.2	1.2	35	420	11.2	11.5	13.9	14	56	1,344	41					
12	1000	FE37FK7K0126KA	K	FK	42.0	37	22	37.5	10.2	1.2	35	420	11.0	11.5	14.3	14	49	1,176	40					
14	1000	FE37FK7K0146KA	K	FK	42.0	37	22	37.5	10.2	1.2	35	490	11.9	9.9	14.3	14	49	1,176	40					
15	1000	FE37F87K0156KA	K	F8	42.0	44	24	37.5	10.2	1.2	35	525	13.3	9.2	12.2	15	49	1,176	52					
16	1000	FE37FR7K0166KA	K	FR	42.0	43	28	37.5	10.2	1.2	35	560	14.0	8.6	11.8	16	42	1,008	60					
18	1000	FE37F97K0186KB	K	F9	42.0	45	30	37.5	20.3	1.2	35	630	16.1	7.7	10.0	16	35	840	65					
20	1000	FE37F97K0206KB	K	F9	42.0	45	30	37.5	20.3	1.2	35	700	17.0	6.9	10.0	16	35	840	65					
22	1000	FE37FX7K0226KB	K	FX	42.0	45	35	37.5	20.3	1.2	35	770	18.7	6.3	9.1	17	35	840	82					
25	1000	FE37FN7K0256KB	K	FN	42.0	50	35	37.5	20.3	1.2	35	875	20.8	5.5	8.3	17	28	672	88					
30	1000	FE37FT7K0306KB	K	FT	42.0	55	40	37.5	20.3	1.2	35	1050	23.8	4.6	7.7	18	28	672	110					
35	1000	FE37FT7K0356KB	K	FT	42.0	55	40	37.5	20.3	1.2	35	1225	25.7	4.0	7.7	18	28	672	110					
40	1000	FE37FS7K0406KB	K	FS	42.0	60	45	37.5	20.3	1.2	35	1400	28.5	3.5	7.1	20	21	504	134					
25	1000	FE52G97K0256KA	K	G9	57.5	45	25	52.5	10.2	1.2	20	500	13.7	11.7	9.1	14	30	1,080	70					
30	1000	FE52GA7K0306KB	K	GA	57.5	45	30	52.5	20.3	1.2	20	600	16.0	9.8	8.0	15	25	900	88					
35	1000	FE52GA7K0356KB	K	GA	57.5	45	30	52.5	20.3	1.2	20	700	17.3	8.4	8.0	15	25	900	88					
40	1000	FE52GC7K0406KB	K	GC	57.5	50	35	52.5	20.3	1.2	20	800	19.9	7.3	6.9	17	20	720	114					
45	1000	FE52GF7K0456KB	K	GF	57.5	60	35	52.5	20.3	1.2	20	900	22.5	6.5	6.1	18	20	720	138					
50	1000	FE52GF7K0506KB	K	GF	57.5	60	35	52.5	20.3	1.2	20	1000	23.7	5.9	6.1	18	20	720	138					
55	1000	FE52GH7K0556KB	K	GH	57.5	65	35	52.5	20.3	1.2	20	1100	25.6	5.3	5.7	18	20	720	145					
57	1000	FE52GE7K0576KB	K	GE	57.5	55	45	52.5	20.3	1.2	20	1140	26.8	5.1	5.4	19	15	540	162					
65	1000	FE52GI7K0656KB	K	GI	57.5	65	45	52.5	20.3	1.2	20	1300	29.4	4.5	5.1	20	15	540	189					
70	1000	FE52GI7K0706KB	K	GI	57.5	65	45	52.5	20.3	1.2	20	1400	30.5	4.2	5.1	20	15	540	189					
Voltage Vndc 1100V																			Voltage Code L					
8	1100	FE37F67L0805KA	L	F6	42.0	40	20	37.5	10.2	1.2	35	280	9.6	15.7	13.9	14	56	1,344	41					

DC FILTERING

FE - THB Grade IIIB 105°C *RoHS Compliant

RATING & PART NUMBER REFERENCE

Cap	Rated	KAVX PN	Voltage Code	Case Code	Dimensions						dv/dt	Peak Current	Irms	ESR 10KHz	Rth	ESL	SPQ	MOQ	Estimated Weight	
					W ± 0.8	H ± 0.8	T ± 0.8	P1 ± 1.0	P2 ± 1.0	d ± 0.05										
uF	V				mm	mm	mm	mm	mm	mm	V/us	A	A	mΩ	°C/W	nH	pcs	pcs	g/pcs	
9	1100	FE37F67L0905KA	L	F6	42.0	40	20	37.5	10.2	1.2	35	315	10.2	14.0	13.9	14	56	1,344	41	
10	1100	FE37FK7L0106KA	L	FK	42.0	37	22	37.5	10.2	1.2	35	350	10.6	12.6	14.3	14	49	1,176	40	
10	1100	FE37FL7L0106KA	L	FL	42.0	37	28	37.5	10.2	1.2	35	350	11.4	12.6	12.2	15	42	1,008	52	
12	1100	FE37FL7L0126KA	L	FL	42.0	37	28	37.5	10.2	1.2	35	420	12.5	10.5	12.2	15	42	1,008	52	
12	1100	FE37F87L0126KA	L	F8	42.0	44	24	37.5	10.2	1.2	35	420	12.5	10.5	12.2	15	49	1,176	52	
13	1100	FE37F87L0136KA	L	F8	42.0	44	24	37.5	10.2	1.2	35	455	13.0	9.7	12.2	15	49	1,176	52	
15	1100	FE37FR7L0156KA	L	FR	42.0	43	28	37.5	10.2	1.2	35	525	14.2	8.4	11.8	16	42	1,008	60	
16	1100	FE37F97L0166KB	L	F9	42.0	45	30	37.5	20.3	1.2	35	560	16.0	7.9	10.0	16	35	840	65	
18	1100	FE37FX7L0186KB	L	FX	42.0	45	35	37.5	20.3	1.2	35	630	17.7	7.0	9.1	17	35	840	82	
20	1100	FE37FN7L0206KB	L	FN	42.0	50	35	37.5	20.3	1.2	35	700	19.5	6.3	8.3	17	28	672	88	
27	1100	FE37FT7L0276KB	L	FT	42.0	55	40	37.5	20.3	1.2	35	945	23.6	4.7	7.7	18	28	672	110	
35	1100	FE37FS7L0356KB	L	FS	42.0	60	45	37.5	20.3	1.2	35	1225	27.9	3.6	7.1	20	21	504	134	
25	1100	FE52GA7L0256KB	L	GA	57.5	45	30	52.5	20.3	1.2	20	500	15.3	10.6	8.0	15	25	900	88	
30	1100	FE52GC7L0306KB	L	GC	57.5	50	35	52.5	20.3	1.2	20	600	18.1	8.9	6.9	17	20	720	114	
40	1100	FE52GF7L0406KB	L	GF	57.5	60	35	52.5	20.3	1.2	20	800	22.3	6.7	6.1	18	20	720	138	
45	1100	FE52GH7L0456KB	L	GH	57.5	65	35	52.5	20.3	1.2	20	900	24.3	5.9	5.7	18	20	720	145	
47	1100	FE52GE7L0476KB	L	GE	57.5	55	45	52.5	20.3	1.2	20	940	25.6	5.7	5.4	19	15	540	162	
50	1100	FE52GI7L0506KB	L	GI	57.5	65	45	52.5	20.3	1.2	20	1000	27.1	5.3	5.1	20	15	540	189	
55	1100	FE52GI7L0556KB	L	GI	57.5	65	45	52.5	20.3	1.2	20	1100	28.4	4.8	5.1	20	15	540	189	
Voltage Vndc 1200V											Voltage Code P									
8	1200	FE37F67P0805KA	P	F6	42.0	40	20	37.5	10.2	1.2	35	280	10.0	14.4	13.9	14	56	1,344	41	
10	1200	FE37FL7P0106KA	P	FL	42.0	37	28	37.5	10.2	1.2	35	350	11.9	11.5	12.2	15	42	1,008	52	
11	1200	FE37F87P0116KA	P	F8	42.0	44	24	37.5	10.2	1.2	35	385	12.5	10.5	12.2	15	49	1,176	52	
12	1200	FE37FR7P0126KA	P	FR	42.0	43	28	37.5	10.2	1.2	35	420	13.3	9.6	11.8	16	42	1,008	60	
13	1200	FE37FR7P0136KA	P	FR	42.0	43	28	37.5	10.2	1.2	35	455	13.8	8.9	11.8	16	42	1,008	60	
14	1200	FE37F97P0146KB	P	F9	42.0	45	30	37.5	20.3	1.2	35	490	15.6	8.2	10.0	16	35	840	65	
15	1200	FE37FX7P0156KB	P	FX	42.0	45	35	37.5	20.3	1.2	35	525	16.9	7.7	9.1	17	35	840	82	
16	1200	FE37FX7P0166KB	P	FX	42.0	45	35	37.5	20.3	1.2	35	560	17.5	7.2	9.1	17	35	840	82	
18	1200	FE37FN7P0186KB	P	FN	42.0	50	35	37.5	20.3	1.2	35	630	19.4	6.4	8.3	17	28	672	88	
22	1200	FE37FT7P0226KB	P	FT	42.0	55	40	37.5	20.3	1.2	35	770	22.3	5.2	7.7	18	28	672	110	
23	1200	FE37FT7P0236KB	P	FT	42.0	55	40	37.5	20.3	1.2	35	805	22.8	5.0	7.7	18	28	672	110	
30	1200	FE37FS7P0306KB	P	FS	42.0	60	45	37.5	20.3	1.2	35	1050	27.0	3.8	7.1	20	21	504	134	
15	1200	FE52G97P0156KA	P	G9	57.5	45	25	52.5	10.2	1.2	20	300	11.6	16.3	9.1	14	30	1,080	70	
20	1200	FE52GA7P0206KB	P	GA	57.5	45	30	52.5	20.3	1.2	20	400	14.3	12.2	8.0	15	25	900	88	
25	1200	FE52GC7P0256KB	P	GC	57.5	50	35	52.5	20.3	1.2	20	500	17.2	9.8	6.9	17	20	720	114	
33	1200	FE52GF7P0336KB	P	GF	57.5	60	35	52.5	20.3	1.2	20	660	21.1	7.4	6.1	18	20	720	138	
38	1200	FE52GH7P0386KB	P	GH	57.5	65	35	52.5	20.3	1.2	20	760	23.4	6.4	5.7	18	20	720	145	
40	1200	FE52GE7P0406KB	P	GE	57.5	55	45	52.5	20.3	1.2	20	800	24.6	6.1	5.4	19	15	540	162	
45	1200	FE52GI7P0456KB	P	GI	57.5	65	45	52.5	20.3	1.2	20	900	26.8	5.4	5.1	20	15	540	189	

DC FILTERING

FE - THB 2000H 125°C *RoHS Compliant



CASE CODE

Case Code	Dimensions											
	W ± 0.8(0.03)		H ± 0.8(0.03)		T ± 0.8(0.03)		P1 ± 1.0(0.04)		P2 ± 1.0(0.04)		d ± 0.05(0.002)	
	mm	in	mm	in	mm	in	mm	in	mm	in	mm	in
FK	42.0	(1.65)	37.0	(1.46)	22.0	(0.87)	37.5	(1.48)	10.2	(0.40)	1.2	(0.05)
FL	42.0	(1.65)	37.0	(1.46)	28.0	(1.10)	37.5	(1.48)	10.2	(0.40)	1.2	(0.05)
F6	42.0	(1.65)	40.0	(1.57)	20.0	(0.79)	37.5	(1.48)	10.2	(0.40)	1.2	(0.05)
FR	42.0	(1.65)	43.0	(1.69)	28.0	(1.10)	37.5	(1.48)	10.2	(0.40)	1.2	(0.05)
F8	42.0	(1.65)	44.0	(1.73)	24.0	(0.94)	37.5	(1.48)	10.2	(0.40)	1.2	(0.05)
F9	42.0	(1.65)	45.0	(1.77)	30.0	(1.18)	37.5	(1.48)	20.3	(0.80)	1.2	(0.05)
FX	42.0	(1.65)	45.0	(1.77)	35.0	(1.38)	37.5	(1.48)	20.3	(0.80)	1.2	(0.05)
FN	42.0	(1.65)	50.0	(1.97)	35.0	(1.38)	37.5	(1.48)	20.3	(0.80)	1.2	(0.05)
FT	42.0	(1.65)	55.0	(2.17)	40.0	(1.57)	37.5	(1.48)	20.3	(0.80)	1.2	(0.05)
FS	42.0	(1.65)	60.0	(2.36)	45.0	(1.77)	37.5	(1.48)	20.3	(0.80)	1.2	(0.05)
G9	57.5	(2.26)	45.0	(1.77)	25.0	(0.98)	52.5	(2.07)	10.2	(0.40)	1.2	(0.05)
GA	57.5	(2.26)	45.0	(1.77)	30.0	(1.18)	52.5	(2.07)	20.3	(0.80)	1.2	(0.05)
GC	57.5	(2.26)	50.0	(1.97)	35.0	(1.38)	52.5	(2.07)	20.3	(0.80)	1.2	(0.05)
GE	57.5	(2.26)	55.0	(2.17)	45.0	(1.77)	52.5	(2.07)	20.3	(0.80)	1.2	(0.05)
GF	57.5	(2.26)	60.0	(2.36)	35.0	(1.38)	52.5	(2.07)	20.3	(0.80)	1.2	(0.05)
GH	57.5	(2.26)	65.0	(2.56)	35.0	(1.38)	52.5	(2.07)	20.3	(0.80)	1.2	(0.05)
GI	57.5	(2.26)	65.0	(2.56)	45.0	(1.77)	52.5	(2.07)	20.3	(0.80)	1.2	(0.05)

RATING & PART NUMBER REFERENCE

Cap uF	Rated Voltage V	KAVX PN	Voltage Code	Case Code	Dimensions						dv/dt V/us	Peak A	Irms A	ESR 10KHz mΩ	Rth °C/W	ESL nH	SPQ pcs	MOQ pcs	Estimated Weight g/pcs
					W ± 0.8 mm	H ± 0.8 mm	T ± 0.8 mm	P1 ± 1.0 mm	P2 ± 1.0 mm	d ± 0.05 mm									
Voltage Code I Vndc at 85°C = 450Vdc; Vop105 at 105°C = 351Vdc; Vop115 at 115°C = 301Vdc; Vop125 at 125°C = 252Vdc																			
30	450	FE37FK8I0306KA	I	FK	42.0	37	22	37.5	10.2	1.2	35	1050	15.8	5.6	14.3	14	49	588	40
35	450	FE37FK8I0356KA	I	FK	42.0	37	22	37.5	10.2	1.2	35	1225	17.0	4.8	14.3	14	49	588	40
40	450	FE37F68I0406KA	I	F6	42.0	40	20	37.5	10.2	1.2	35	1400	18.5	4.2	13.9	14	56	672	41
40	450	FE37FK8I0406KA	I	FK	42.0	37	22	37.5	10.2	1.2	35	1400	18.2	4.2	14.3	14	49	588	40
50	450	FE37FL8I0506KA	I	FL	42.0	37	28	37.5	10.2	1.2	35	1750	22.0	3.4	12.2	15	42	504	52
55	450	FE37F88I0556KA	I	F8	42.0	44	24	37.5	10.2	1.2	35	1925	23.1	3.1	12.2	15	49	588	52
60	450	FE37FR8I0606KA	I	FR	42.0	43	28	37.5	10.2	1.2	35	2100	24.6	2.8	11.8	16	42	504	60
65	450	FE37F98I0656KB	I	F9	42.0	45	30	37.5	20.3	1.2	35	2275	27.7	2.6	10.0	16	35	420	65
70	450	FE37F98I0706KB	I	F9	42.0	45	30	37.5	20.3	1.2	35	2450	28.8	2.4	10.0	16	35	420	65
80	450	FE37FX8I0806KB	I	FX	42.0	45	35	37.5	20.3	1.2	35	2800	32.3	2.1	9.1	17	35	420	82
90	450	FE37FN8I0906KB	I	FN	42.0	50	35	37.5	20.3	1.2	35	3150	33.5	2.1	8.3	17	28	336	88
110	450	FE37FT8I0117KB	I	FT	42.0	55	40	37.5	20.3	1.2	35	3850	35.2	2.1	7.7	18	28	336	110
120	450	FE37FT8I0127KB	I	FT	42.0	55	40	37.5	20.3	1.2	35	4200	36.8	1.9	7.7	18	28	336	110
140	450	FE37FS8I0147KB	I	FS	42.0	60	45	37.5	20.3	1.2	35	4900	41.2	1.6	7.1	20	21	252	134
80	450	FE52G98I0806KA	I	G9	57.5	45	25	52.5	10.2	1.2	20	1600	21.2	4.9	9.1	14	30	360	70
100	450	FE52GA8I0107KB	I	GA	57.5	45	30	52.5	20.3	1.2	20	2000	25.3	3.9	8.0	15	25	300	88
130	450	FE52GC8I0137KB	I	GC	57.5	50	35	52.5	20.3	1.2	20	2600	31.1	3.0	6.9	17	20	240	114
160	450	FE52GF8I0167KB	I	GF	57.5	60	35	52.5	20.3	1.2	20	3200	36.8	2.4	6.1	18	20	240	138
170	450	FE52GE8I0177KB	I	GE	57.5	55	45	52.5	20.3	1.2	20	3400	36.5	2.5	6.1	19	15	180	162
180	450	FE52GH8I0187KB	I	GH	57.5	65	35	52.5	20.3	1.2	20	3600	38.6	2.4	5.7	18	20	240	145
180	450	FE52GE8I0187KB	I	GE	57.5	55	45	52.5	20.3	1.2	20	3600	39.6	2.4	5.4	19	15	180	162
210	450	FE52GI8I0217KB	I	GI	57.5	65	45	52.5	20.3	1.2	20	4200	44.0	2.0	5.1	20	15	180	189
220	450	FE52GI8I0227KB	I	GI	57.5	65	45	52.5	20.3	1.2	20	4400	45.0	1.9	5.1	20	15	180	189
Voltage Code Q Vndc at 85°C = 600Vdc; Vop105 at 105°C = 468Vdc; Vop115 at 115°C = 402Vdc; Vop125 at 125°C = 336Vdc																			
22	600	FE37F68Q0226KA	Q	F6	42.0	40	20	37.5	10.2	1.2	35	770	15.6	5.9	13.9	14	56	672	41
25	600	FE37F68Q0256KA	Q	F6	42.0	40	20	37.5	10.2	1.2	35	875	16.6	5.2	13.9	14	56	672	41
30	600	FE37FL8Q0306KA	Q	FL	42.0	37	28	37.5	10.2	1.2	35	1050	19.4	4.3	12.2	15	42	504	52
33	600	FE37F88Q0336KA	Q	F8	42.0	44	24	37.5	10.2	1.2	35	1155	20.4	4.0	12.2	15	49	588	52
35	600	FE37FR8Q0356KA	Q	FR	42.0	43	28	37.5	10.2	1.2	35	1225	21.4	3.7	11.8	16	42	504	60
40	600	FE37F98Q0406KB	Q	F9	42.0	45	30	37.5	20.3	1.2	35	1400	24.8	3.3	10.0	16	35	420	65
45	600	FE37F98Q0456KB	Q	F9	42.0	45	30	37.5	20.3	1.2	35	1575	26.3	2.9	10.0	16	35	420	65

The Important Information/Disclaimer is incorporated in the catalog where these specifications came from or available online at www.kyocera-avx.com/disclaimer/ by reference and should be reviewed in full before placing any order.

DC FILTERING

FE - THB 2000H 125°C *RoHS Compliant



RATING & PART NUMBER REFERENCE

Cap	Rated Voltage	KAVX PN	Voltage Code	Case Code	Dimensions						dv/dt	Peak	I _{rms}	ESR 10KHz	R _{th}	ESL	SPQ	MOQ	Estimated Weight
					W ± 0.8	H ± 0.8	T ± 0.8	P1 ± 1.0	P2 ± 1.0	d ± 0.05									
uF	V				mm	mm	mm	mm	mm	mm	V/us	A	A	mΩ	°C/W	nH	pcs	pcs	g/pcs
45	600	FE37FX8Q0456KB	Q	FX	42.0	45	35	37.5	20.3	1.2	35	1575	27.6	2.9	9.1	17	35	420	82
50	600	FE37FX8Q0506KB	Q	FX	42.0	45	35	37.5	20.3	1.2	35	1750	29.0	2.6	9.1	17	35	420	82
50	600	FE37FN8Q0506KB	Q	FN	42.0	50	35	37.5	20.3	1.2	35	1750	28.5	3.0	8.3	17	28	336	88
60	600	FE37FT8Q0606KB	Q	FT	42.0	55	40	37.5	20.3	1.2	35	2100	29.6	3.0	7.7	18	28	336	110
70	600	FE37FT8Q0706KB	Q	FT	42.0	55	40	37.5	20.3	1.2	35	2450	32.0	2.5	7.7	18	28	336	110
75	600	FE37FS8Q0756KB	Q	FS	42.0	60	45	37.5	20.3	1.2	35	2625	34.4	2.4	7.1	20	21	252	134
80	600	FE37FS8Q0806KB	Q	FS	42.0	60	45	37.5	20.3	1.2	35	2800	35.5	2.2	7.1	20	21	252	134
85	600	FE37FS8Q0856KB	Q	FS	42.0	60	45	37.5	20.3	1.2	35	2975	36.6	2.1	7.1	20	21	252	134
45	600	FE52G98Q0456KA	Q	G9	57.5	45	25	52.5	10.2	1.2	20	900	18.1	6.7	9.1	14	30	360	70
50	600	FE52G98Q0506KA	Q	G9	57.5	45	25	52.5	10.2	1.2	20	1000	19.1	6.0	9.1	14	30	360	70
55	600	FE52GA8Q0556KB	Q	GA	57.5	45	30	52.5	20.3	1.2	20	1100	21.4	5.5	8.0	15	25	300	88
60	600	FE52GA8Q0606KB	Q	GA	57.5	45	30	52.5	20.3	1.2	20	1200	22.3	5.0	8.0	15	25	300	88
65	600	FE52GC8Q0656KB	Q	GC	57.5	50	35	52.5	20.3	1.2	20	1300	25.0	4.6	6.9	17	20	240	114
70	600	FE52GC8Q0706KB	Q	GC	57.5	50	35	52.5	20.3	1.2	20	1400	26.0	4.3	6.9	17	20	240	114
75	600	FE52GC8Q0756KB	Q	GC	57.5	50	35	52.5	20.3	1.2	20	1500	26.9	4.0	6.9	17	20	240	114
80	600	FE52GC8Q0806KB	Q	GC	57.5	50	35	52.5	20.3	1.2	20	1600	27.8	3.8	6.9	17	20	240	114
90	600	FE52GF8Q0906KB	Q	GF	57.5	60	35	52.5	20.3	1.2	20	1800	31.4	3.3	6.1	18	20	240	138
100	600	FE52GF8Q0107KB	Q	GF	57.5	60	35	52.5	20.3	1.2	20	2000	33.1	3.0	6.1	18	20	240	138
110	600	FE52GH8Q0117KB	Q	GH	57.5	65	35	52.5	20.3	1.2	20	2200	34.3	3.0	5.7	18	20	240	145
110	600	FE52GE8Q0117KB	Q	GE	57.5	55	45	52.5	20.3	1.2	20	2200	35.3	3.0	5.4	19	15	180	162
130	600	FE52GI8Q0137KB	Q	GI	57.5	65	45	52.5	20.3	1.2	20	2600	39.4	2.5	5.1	20	15	180	189
Voltage Code A V_{ndc} at 85°C = 700Vdc; V_{op105} at 105°C = 546Vdc; V_{op115} at 115°C = 469Vdc; V_{op125} at 125°C = 392Vdc																			
15	700	FE37F68A0156KA	A	F6	42.0	40	20	37.5	10.2	1.2	35	525	13.8	7.6	13.9	14	56	672	41
20	700	FE37FL8A0206KA	A	FL	42.0	37	28	37.5	10.2	1.2	35	700	17.0	5.7	12.2	15	42	504	52
22	700	FE37FL8A0226KA	A	FL	42.0	37	28	37.5	10.2	1.2	35	770	17.8	5.2	12.2	15	42	504	52
25	700	FE37F88A0256KA	A	F8	42.0	44	24	37.5	10.2	1.2	35	875	19.0	4.6	12.2	15	49	588	52
25	700	FE37FR8A0256KA	A	FR	42.0	43	28	37.5	10.2	1.2	35	875	19.3	4.6	11.8	16	42	504	60
30	700	FE37F98A0306KB	A	F9	42.0	45	30	37.5	20.3	1.2	35	1050	22.9	3.8	10.0	16	35	420	65
35	700	FE37FX8A0356KB	A	FX	42.0	45	35	37.5	20.3	1.2	35	1225	26.0	3.3	9.1	17	35	420	82
40	700	FE37FN8A0406KB	A	FN	42.0	50	35	37.5	20.3	1.2	35	1400	27.2	3.2	8.3	17	28	336	88
45	700	FE37FT8A0456KB	A	FT	42.0	55	40	37.5	20.3	1.2	35	1575	27.4	3.5	7.7	18	28	336	110
50	700	FE37FT8A0506KB	A	FT	42.0	55	40	37.5	20.3	1.2	35	1750	28.9	3.1	7.7	18	28	336	110
55	700	FE37FT8A0556KB	A	FT	42.0	55	40	37.5	20.3	1.2	35	1925	30.3	2.8	7.7	18	28	336	110
60	700	FE37FS8A0606KB	A	FS	42.0	60	45	37.5	20.3	1.2	35	2100	32.9	2.6	7.1	20	21	252	134
65	700	FE37FS8A0656KB	A	FS	42.0	60	45	37.5	20.3	1.2	35	2275	34.2	2.4	7.1	20	21	252	134
30	700	FE52G98A0306KA	A	G9	57.5	45	25	52.5	10.2	1.2	20	600	15.8	8.8	9.1	14	30	360	70
35	700	FE52G98A0356KA	A	G9	57.5	45	25	52.5	10.2	1.2	20	700	17.1	7.5	9.1	14	30	360	70
40	700	FE52GA8A0406KB	A	GA	57.5	45	30	52.5	20.3	1.2	20	800	19.5	6.6	8.0	15	25	300	88
45	700	FE52GA8A0456KB	A	GA	57.5	45	30	52.5	20.3	1.2	20	900	20.7	5.9	8.0	15	25	300	88
50	700	FE52GC8A0506KB	A	GC	57.5	50	35	52.5	20.3	1.2	20	1000	23.5	5.3	6.9	17	20	240	114
55	700	FE52GC8A0556KB	A	GC	57.5	50	35	52.5	20.3	1.2	20	1100	24.6	4.8	6.9	17	20	240	114
60	700	FE52GC8A0606KB	A	GC	57.5	50	35	52.5	20.3	1.2	20	1200	25.7	4.4	6.9	17	20	240	114
70	700	FE52GF8A0706KB	A	GF	57.5	60	35	52.5	20.3	1.2	20	1400	28.4	4.1	6.1	18	20	240	138
75	700	FE52GF8A0756KB	A	GF	57.5	60	35	52.5	20.3	1.2	20	1500	29.4	3.8	6.1	18	20	240	138
85	700	FE52GH8A0856KB	A	GH	57.5	65	35	52.5	20.3	1.2	20	1700	32.3	3.4	5.7	18	20	240	145
85	700	FE52GE8A0856KB	A	GE	57.5	55	45	52.5	20.3	1.2	20	1760	33.2	3.4	5.4	19	15	180	162
100	700	FE52GI8A0107KB	A	GI	57.5	65	45	52.5	20.3	1.2	20	2000	36.9	2.9	5.1	20	15	180	189
110	700	FE52GI8A0117KB	A	GI	57.5	65	45	52.5	20.3	1.2	20	2200	38.7	2.6	5.1	20	15	180	189
Voltage Code C V_{ndc} at 85°C = 900Vdc; V_{op105} at 105°C = 702Vdc; V_{op115} at 115°C = 603Vdc; V_{op125} at 125°C = 504Vdc																			
12	900	FE37F68C0126KA	C	F6	42.0	40	20	37.5	10.2	1.2	35	420	13.8	7.6	13.9	14	56	672	41
12	900	FE37FK8C0126KA	C	FK	42.0	37	22	37.5	10.2	1.2	35	420	13.6	7.6	14.3	14	49	588	40
14	900	FE37FK8C0146KA	C	FK	42.0	37	22	37.5	10.2	1.2	35	490	14.7	6.5	14.3	14	49	588	40
15	900	FE37F88C0156KA	C	F8	42.0	44	24	37.5	10.2	1.2	35	525	16.4	6.1	12.2	15	49	588	52
16	900	FE37FR8C0166KA	C	FR	42.0	43	28	37.5	10.2	1.2	35	560	17.3	5.7	11.8	16	42	504	60
18	900	FE37F98C0186KB	C	F9	42.0	45	30	37.5	20.3	1.2	35	630	19.9	5.1	10.0	16	35	420	65
20	900	FE37F98C0206KB	C	F9	42.0	45	30	37.5	20.3	1.2	35	700	20.9	4.6	10.0	16	35	420	65
22	900	FE37FX8C0226KB	C	FX	42.0	45	35	37.5	20.3	1.2	35	770	23.0	4.1	9.1	17	35	420	82

DC FILTERING

FE - THB 2000H 125°C *RoHS Compliant



RATING & PART NUMBER REFERENCE

Cap	Rated Voltage	KAVX PN	Voltage Code	Case Code	Dimensions						dv/dt	Peak	I _{rms}	ESR 10KHz	R _{th}	ESL	SPQ	MOQ	Estimated Weight
					W ± 0.8	H ± 0.8	T ± 0.8	P1 ± 1.0	P2 ± 1.0	d ± 0.05									
uF	V				mm	mm	mm	mm	mm	mm	V/us	A	A	mΩ	°C/W	nH	pcs	pcs	g/pcs
25	900	FE37FN8C0256KB	C	FN	42.0	50	35	37.5	20.3	1.2	35	875	24.1	4.1	8.3	17	28	336	88
30	900	FE37FT8C0306KB	C	FT	42.0	55	40	37.5	20.3	1.2	35	1050	25.0	4.1	7.7	18	28	336	110
35	900	FE37FT8C0356KB	C	FT	42.0	55	40	37.5	20.3	1.2	35	1225	27.0	3.6	7.7	18	28	336	110
40	900	FE37FS8C0406KB	C	FS	42.0	60	45	37.5	20.3	1.2	35	1400	30.0	3.1	7.1	20	21	252	134
25	900	FE52G98C0256KA	C	G9	57.5	45	25	52.5	10.2	1.2	20	500	16.2	8.4	9.1	14	30	360	70
30	900	FE52GA8C0306KB	C	GA	57.5	45	30	52.5	20.3	1.2	20	600	18.9	7.0	8.0	15	25	300	88
35	900	FE52GA8C0356KB	C	GA	57.5	45	30	52.5	20.3	1.2	20	700	20.4	6.0	8.0	15	25	300	88
40	900	FE52GC8C0406KB	C	GC	57.5	50	35	52.5	20.3	1.2	20	800	23.5	5.3	6.9	17	20	240	114
45	900	FE52GF8C0456KB	C	GF	57.5	60	35	52.5	20.3	1.2	20	900	26.5	4.7	6.1	18	20	240	138
50	900	FE52GH8C0556KB	C	GH	57.5	65	35	52.5	20.3	1.2	20	1000	28.0	4.2	6.1	18	20	240	138
55	900	FE52GH8C0556KB	C	GH	57.5	65	35	52.5	20.3	1.2	20	1100	29.0	4.2	5.7	18	20	240	145
57	900	FE52GE8C0576KB	C	GE	57.5	55	45	52.5	20.3	1.2	20	1140	30.4	4.0	5.4	19	15	180	162
65	900	FE52GI8C0656KB	C	GI	57.5	65	45	52.5	20.3	1.2	20	1300	33.3	3.5	5.1	20	15	180	189
70	900	FE52GI8C0706KB	C	GI	57.5	65	45	52.5	20.3	1.2	20	1400	33.7	3.4	5.1	20	15	180	189
Voltage Code L V_{ndc} at 85°C = 1100Vdc; V_{op105} at 105°C = 858Vdc; V_{op115} at 115°C = 737Vdc; V_{op125} at 125°C = 616Vdc																			
8	1100	FE37F68L0805KA	L	F6	42.0	40	20	37.5	10.2	1.2	35	280	12.3	9.5	13.9	14	56	672	41
10	1100	FE37FL8L0106KA	L	FL	42.0	37	28	37.5	10.2	1.2	35	350	14.7	7.6	12.2	15	42	504	52
11	1100	FE37F88L0116KA	L	F8	42.0	44	24	37.5	10.2	1.2	35	385	15.4	6.9	12.2	15	49	588	52
12	1100	FE37FR8L0126KA	L	FR	42.0	43	28	37.5	10.2	1.2	35	420	16.4	6.3	11.8	16	42	504	60
13	1100	FE37FR8L0136KA	L	FR	42.0	43	28	37.5	10.2	1.2	35	455	17.0	5.8	11.8	16	42	504	60
14	1100	FE37F98L0146KB	L	F9	42.0	45	30	37.5	20.3	1.2	35	490	19.2	5.4	10.0	16	35	420	65
15	1100	FE37FX8L0156KB	L	FX	42.0	45	35	37.5	20.3	1.2	35	525	20.8	5.1	9.1	17	35	420	82
16	1100	FE37FX8L0166KB	L	FX	42.0	45	35	37.5	20.3	1.2	35	560	21.5	4.8	9.1	17	35	420	82
18	1100	FE37FN8L0186KB	L	FN	42.0	50	35	37.5	20.3	1.2	35	630	22.4	4.8	8.3	17	28	336	88
22	1100	FE37FT8L0226KB	L	FT	42.0	55	40	37.5	20.3	1.2	35	770	25.7	3.9	7.7	18	28	336	110
23	1100	FE37FT8L0236KB	L	FT	42.0	55	40	37.5	20.3	1.2	35	805	26.3	3.8	7.7	18	28	336	110
30	1100	FE37FS8L0306KB	L	FS	42.0	60	45	37.5	20.3	1.2	35	1050	31.2	2.9	7.1	20	21	252	134
15	1100	FE52G98L0156KA	L	G9	57.5	45	25	52.5	10.2	1.2	20	300	13.7	11.7	9.1	14	30	360	70
20	1100	FE52GA8L0206KB	L	GA	57.5	45	30	52.5	20.3	1.2	20	400	16.9	8.8	8.0	15	25	300	88
25	1100	FE52GC8L0256KB	L	GC	57.5	50	35	52.5	20.3	1.2	20	500	20.3	7.0	6.9	17	20	240	114
33	1100	FE52GF8L0336KB	L	GF	57.5	60	35	52.5	20.3	1.2	20	660	24.9	5.3	6.1	18	20	240	138
38	1100	FE52GH8L0386KB	L	GH	57.5	65	35	52.5	20.3	1.2	20	760	26.4	5.0	5.7	18	20	240	145
40	1100	FE52GE8L0406KB	L	GE	57.5	55	45	52.5	20.3	1.2	20	800	27.9	4.8	5.4	19	15	180	162
45	1100	FE52GI8L0456KB	L	GI	57.5	65	45	52.5	20.3	1.2	20	900	30.3	4.2	5.1	20	15	180	189