

1

2

3

4

5

6

7

A

A

B

B

C

C

D

D

E

E

F

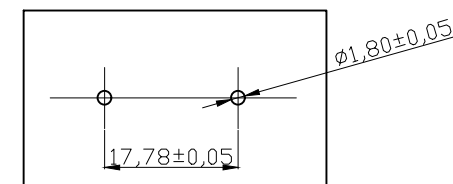
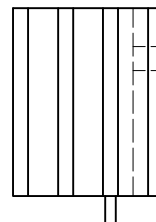
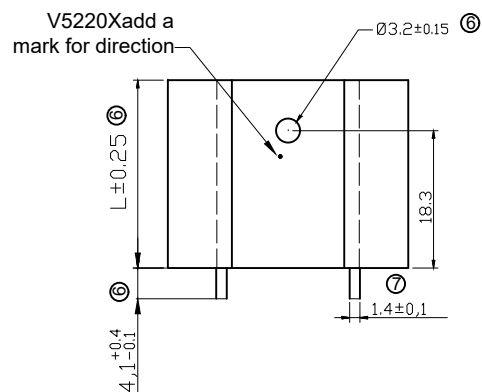
F

G

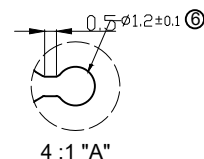
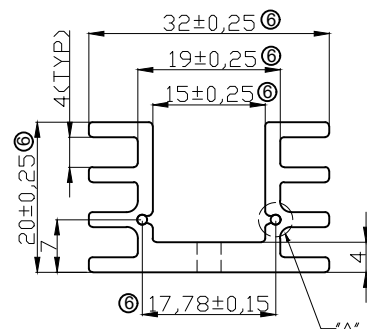
G

H

H



④ Recommended PCB Layout



Material: AL6063-T5
Finished: Black anodized

⑥ Option	L	Thermal resistance(K/W)
V5220W	25	10.8
V5220X	37.5	8.6
V5220Y	50	7.2

RoHS compliant

Unit:mm

⑤ Scale	Free	⑦	⑧	⑨	⑩	⑪	⑫	⑬	⑭	⑮
TOLERANCE		⑦	⑧	⑨	⑩	⑪	⑫	⑬	⑭	⑮
0-6	± 0.15	⑦	⑧	⑨	⑩	⑪	⑫	⑬	⑭	⑮
6-30	± 0.20	⑦	⑧	⑨	⑩	⑪	⑫	⑬	⑭	⑮
30-120	± 0.30	⑦	⑧	⑨	⑩	⑪	⑫	⑬	⑭	⑮
120-400	± 0.50	⑦	⑧	⑨	⑩	⑪	⑫	⑬	⑭	⑮
DIM	TOL	⑦	⑧	⑨	⑩	⑪	⑫	⑬	⑭	⑮
		⑦	⑧	⑨	⑩	⑪	⑫	⑬	⑭	⑮
Angle	$\pm 1^\circ$	Id.	Modification	Date	Name					

Description: Extrusion Heat Sink, 32x20mm, Black anodized with solder pins

ASSMANN WSW-No.

V5220x

Drawing-No.

ASS 0498 HS

rev07

Customer-No.

SHEET
1 / 2

1

2

3

4

5

6

7

1

2

3

4

5

6

7

A

⑥

V5220W

A

B

B

C

C

D

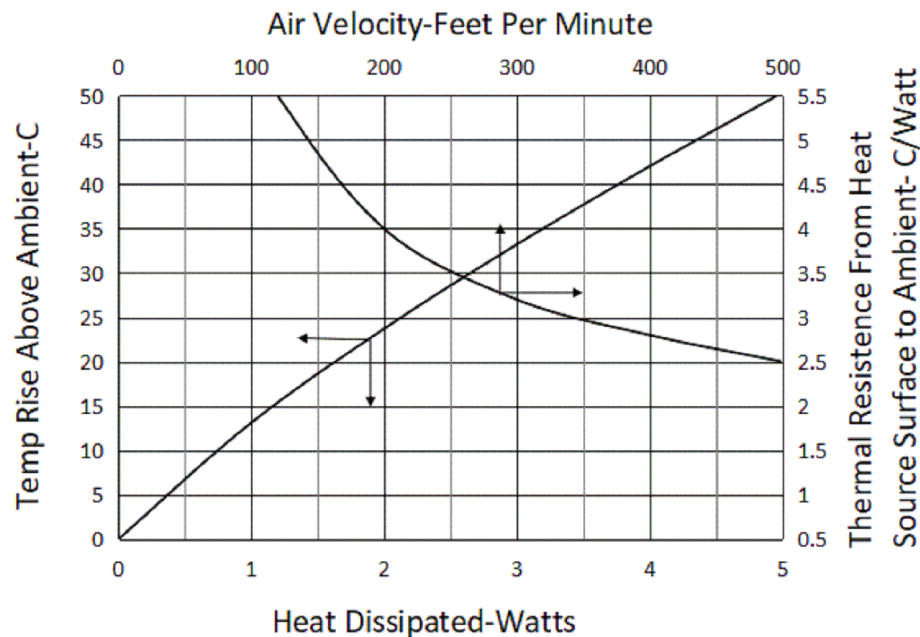
D

E

E

F

F



Thermal Power (W)	Temp Rise (°C)
0	0
1	13.1
2	23.7
3	33.2
4	42
5	50.3

Note: Natural convection cooling



Air Velocity (Feet/Minute)	Thermal Resistance (°C/W)
100	5.9
200	4
300	3.2
400	2.8
500	2.5

G

G

RoHS compliant

Unit:mm

Scale	Free	⑦	Update of typo	24.07.2024	Segal		Date	Name
⑥ TOLERANCE		⑥	Update the tolerance, thermal resistance and add the thermal graph on page 2	18.01.2020	Segal	Drawn	19.03.2002	Hellwig
0-6	±0.15	⑤	Update the tolerance	04.04.2019	Amy	Approved	24.07.2024	Segal
6-30	±0.20	④	Add PCB layout information	24.02.2014	Amy			
30-120	±0.30	③	Modify drawing layout	10.03.2010	Alex			
120-400	±0.50	②	Update	11.08.2009	Dean			
DIM	TOL							
Angle	±1°	Id.	Modification	Date	Name	 A company of 		

Description: Extrusion Heat Sink, 32x20mm, Black anodized with solder pins

ASSMANN WSW-No.

V5220x

Drawing-No.

ASS 0498 HS

rev07

Customer-No.

SHEET
2 / 2

H

1

2

3

4

5

6

7