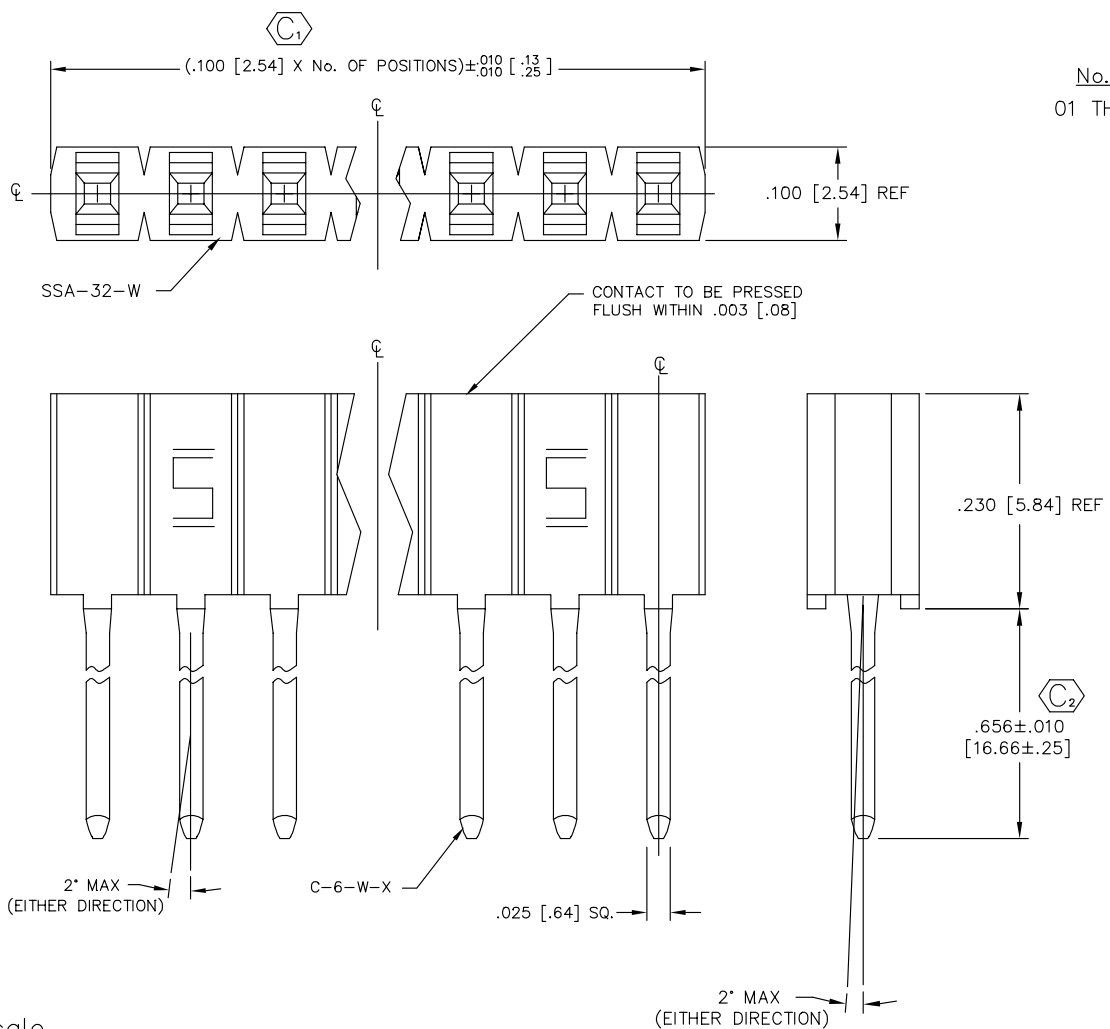


REV. J

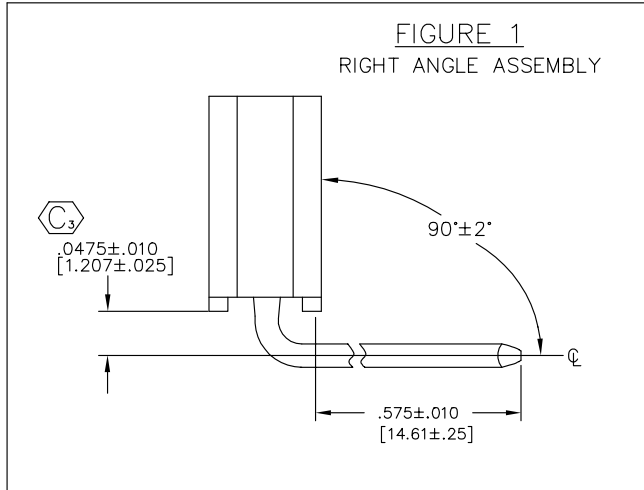
DIMENSIONS ARE IN INCHES UNLESS OTHERWISE NOTED TOLERANCES ARE:  
 ONE PLACE DECIMALS: ± .1 [2.5] THREE PLACE DECIMALS: ± .005 [.127] ANGLES ± 2°  
 TWO PLACE DECIMALS: ± .01 [.25] FOUR PLACE DECIMALS: ± .0020 [.0508]

TITLE: SSA-WIRE WRAP TAIL ASSEMBLY

DWG NO: SSA-1XX-W-X-XX SHEET 1 OF 1



SSA-1XX-W-X-XX  
 No. OF POSITIONS \_\_\_\_\_  
 01 THRU 32 AVAILABLE  
 LEAD STYLE: \_\_\_\_\_  
 WIRE WRAP CONTACT C-6-W-X  
 CONTACT PLATING \_\_\_\_\_  
 -G: GOLD  
 -T: TIN  
 OPTION \_\_\_\_\_  
 -RA: RIGHT ANGLE (SEE FIGURE 1)



Do not scale from this print

- NOTES:
1. MINIMUM CONTACT PUSH-OUT FORCE: 16 oz.
  2. INSERTION FORCE: 3.0 oz. AVG. PER CONTACT USING .018 [.46] DIA PIN.
  3. WITHDRAWAL FORCE: 1.5 oz. AVG. PER CONTACT USING .018 [.46] DIA PIN.
  4.  $\text{\textcircled{C}}$  REPRESENTS A CRITICAL DIMENSION.

**PROPRIETARY NOTE**  
 THIS DOCUMENT CONTAINS INFORMATION CONFIDENTIAL AND PROPRIETARY TO SAMTEC INC. AND SHALL NOT BE REPRODUCED OR TRANSFERRED TO OTHER DOCUMENTS OR DISCLOSED TO OTHERS OR USED FOR ANY PURPOSE OTHER THAN THAT FOR WHICH IT WAS OBTAINED WITHOUT THE EXPRESSED WRITTEN CONSENT OF SAMTEC INC.

MATERIAL:  
 INSULATOR: DUPONT FR-530 RYNITE  
 CONTACT: PHOSPHOR BRONZE

**samtec**  
 520 PARK EAST BLVD. NEW ALBANY, INDIANA 47150  
 PHONE (812) 944-6733 P.O. BOX 1147  
 CODE 55322

MADE BY: MARK CHILTON 11-19-88

SSA-1XX-W-X-XX SHEET 1 OF 1