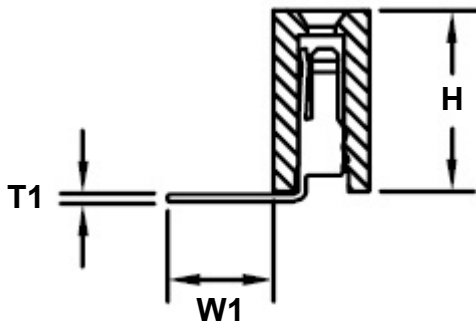
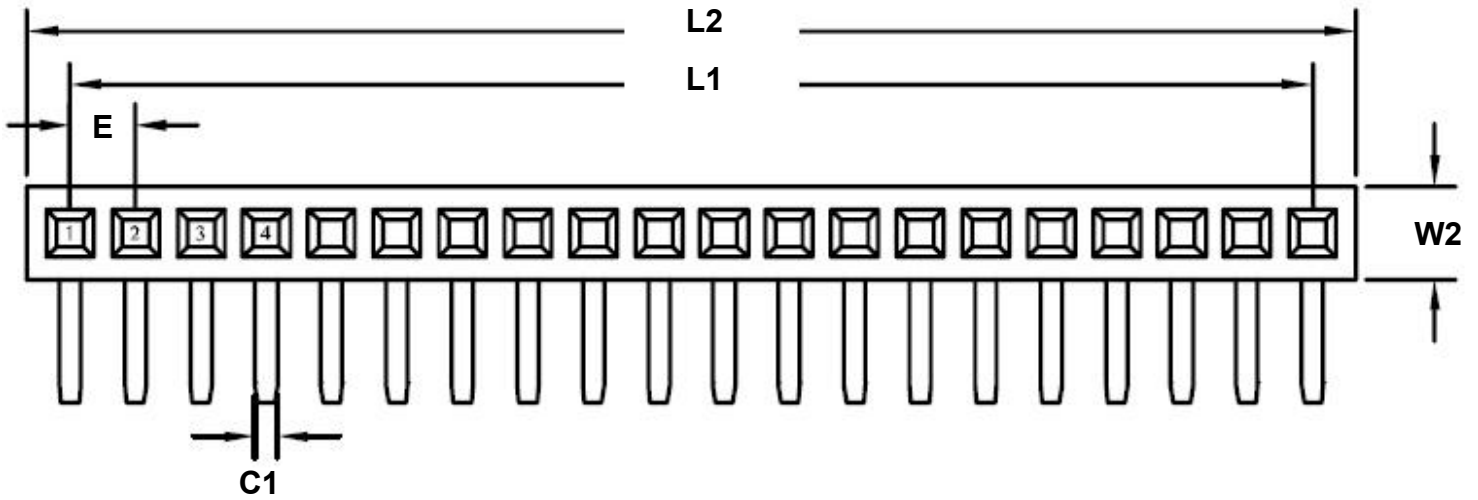
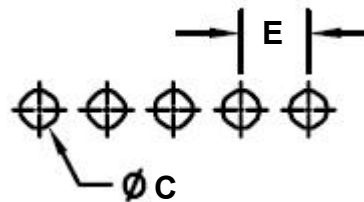


0.1" 40 pin Right Angle Female Header Through Hole Gold

REF.	DIMENSIONS					
	mm			inches		
	MIN.	TYP.	MAX.	MIN.	TYP.	MAX.
C		1.02				
C1		0.68				
E		2.54		0.100		
H		8.50				
L1		99.06		3.900		
L2		102.10		4.020		
T1		0.40				
W1		3.20				
W2		2.50				



Recommended PCB Hole Layout



SPECIFICATIONS

Plastic body construction: PA6T plastic (320°C melting point)

Pin construction: Gold plated (brass pin, with 1um gold over 50um nickel)

Operating temperature range: -40°C to +130°C

Reflow maximum temperature: +260°C