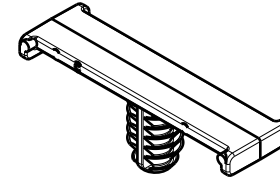


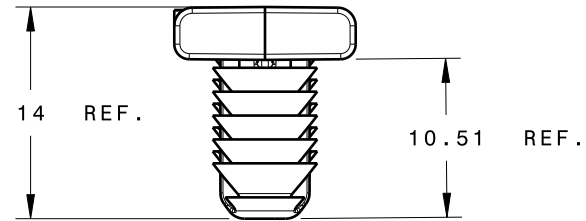
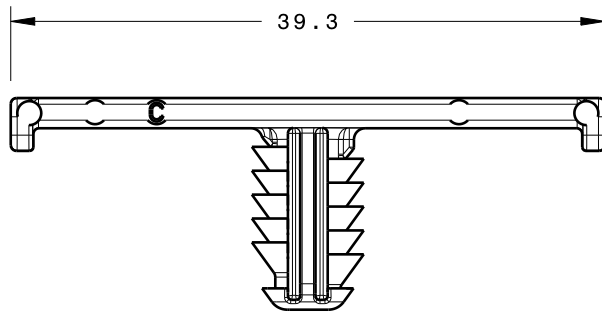
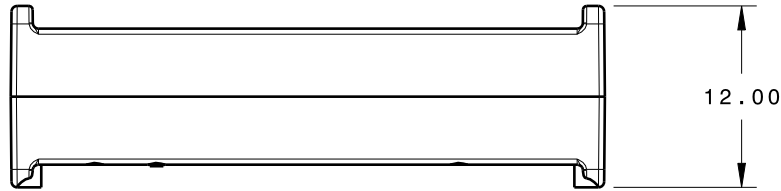
REFERENCE:

PERFORMANCE REQUIREMENTS AT DRY AS MOLDED:

1. FIR TREE PUSH IN FORCE: REF. 10 LBS MAX IN A 6.5mm HOLE AND A PLATE THICKNESS OF 1.8mm
2. FIR TREE PULL OUT FORCE: REF. 30 LBS MIN IN A 6.5mm HOLE AND A PLATE THICKNESS OF 1.8mm
3. SHEET METAL THICKNESS RANGE: 0.70mm - 5.75mm
4. CIRCULAR HOLE SIZE DIAMETER: 6.5mm +/- 0.40mm
5. APPLICABLE HEX HOLE: 6.35mm +/- 0.25mm



Isometric view  
Scale: 1:1



PART NUMBER	MATERIAL	COLOR
TC6FT6	NYLON 6/6, IM, HS, UV RESISTANT	BLACK
	NYLON 6/6, IM, HS	NATURAL

INVENTORS

**HellermannTyton®**

ALL PROPRIETARY RIGHTS IN THE SUBJECT MATTER SHOWN ON THIS DRAWING ARE EXCLUSIVE PROPERTY OF HELLERMANNTYTON

name	date	city, state
S. ADAMS	3/20/2007	MENOMONEE FALLS, WI.

REVISIONS

REV	level	DATE	BY	DATE	ECN #	part level
			AAC	03/30/12	012060	C

DIMENSIONS

TOLERANCES	units
.XXXX = ± 0.25	millimeters
.XXX = ± 0.50	
.XX = ± 1.00	
.X = ± 2.00	
∠ = ± 0.50	
unless otherwise specified	

PART

number	TC6FT6	phase	PRODUCTION
name	TAPE CLIP		
material	SEE CHART		

DRAWING

FORMAT	AH	CAD	SCALE
VERSION	J		2:1
A- SIZE (landscape)_N01		previous drawing number	
drawn	S. ADAMS	checked	S. ADAMS
12/07/07		03/30/12	
type	CUSTOMER	sheet 1 of 1	
number	MT07-054-002CST		