

REVISION CT

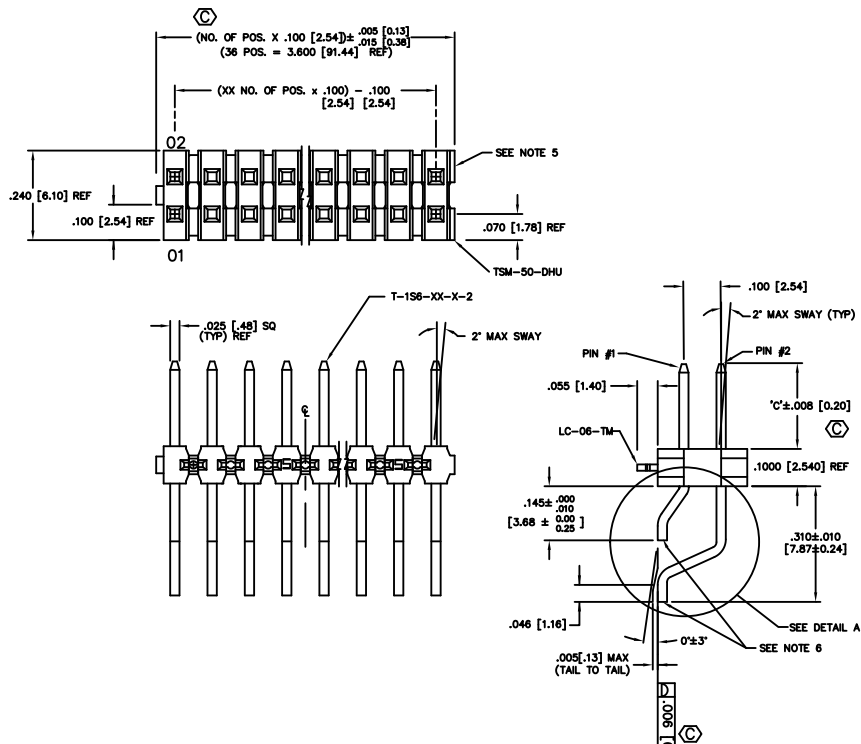


FIG 1
-LC: LOCKING CLIP OPTION
CLIPS N/A WITH -A OPTION.

DIFFERENT AS SHOWN,
OTHERWISE SAME AS FIG 1.

FOR EVEN: "A" = $\frac{(\text{NO. OF POS.} \times .100 [2.54]) - .300 [7.62]}{2} + .050 [1.27]$

FOR ODD: "A" = $\frac{(\text{NO. OF POS.} \times .100 [2.54]) - .300 [7.62]}{2}$

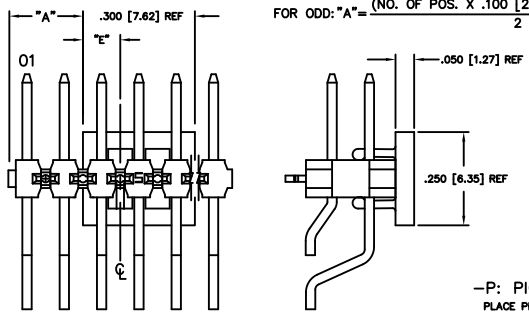


FIG 3
-P: PICK & PLACE PAD
PLACE PPP-08 ON ϕ AS SHOWN

TABLE 2

NO OF POS	S/S BOW
02 - 10	.0030 [0.080]
11 - 20	.0050 [0.127]
21 - 30	.0070 [0.178]
31 - 36	.0080 [0.203]

DIMENSIONS ARE IN INCHES		UNLESS OTHERWISE NOTED		TOLERANCES ARE:		TITLE:	DWG NO:
ONE PLACE DECIMALS ± .1 [3]	THREE PLACE DECIMALS ± .005 [0.13]	ANGLES ± 2°		TERMINAL SRTIP DOUBLE SURFACE MOUNT		TSM-1XX-XX-XXX-XX-XX-XXX-XX	TSW-1XX-XX-XXX-XX-XX-XXX-XX
TWO PLACE DECIMALS ± .01 [0.3]	FOUR PLACE DECIMALS ± .0020 [0.051]						SHEET 1 OF 3

TSM-1XX-XX-XXX-XX-XX-XXX-XX

NO. OF POSITIONS -02 THRU -36

LEAD STYLE (SEE TABLE 1)

PLATING SPECIFICATION

- T: MATTE TIN CONTACT AND TAIL
- S: 30μm SELECTIVE GOLD IN CONTACT AREA, MATTE TIN ON TAIL
- L: 10μm SELECTIVE GOLD IN CONTACT AREA, MATTE TIN ON TAIL
- F: 3μm FLASH SELECTIVE GOLD IN CONTACT AREA, MATTE TIN ON TAIL
- H: 30μm HEAVY GOLD IN CONTACT AREA, 3μm FLASH GOLD ON TAIL
- TL: TIN/LEAD (90/10+/-5) CONTACT AND TAIL
- STL: 30μm SELECTIVE GOLD, ON CONTACT, TIN/LEAD (90/10+/-5) TAIL
- SM: 30μm SELECTIVE GOLD, IN CONTACT AREA, MATTE TIN ON TAIL
- LM: 10μm LIGHT SELECTIVE GOLD IN CONTACT AREA, MATTE TIN ON TAIL
- FM: 3μm FLASH SELECTIVE GOLD, IN CONTACT AREA, MATTE TIN ON TAIL
- TM: MATTE TIN CONTACT AND TAIL
- SS: 30μm STRIPED SELECTIVE GOLD IN CONTACT, MATTE TIN ON TAIL (SEE NOTE 14)

ROW OPTION

- DH: DOUBLE HORIZONTAL (USE TSM-50-DHU)
- MT: MIXED TECHNOLOGY (SEE FIG. 4 & TABLE 1) (NOT AVAILABLE WITH -LC, -SL, -TR OR -A OPTIONS)

NOTES:

1. ϕ REPRESENTS A CRITICAL DIMENSION.
2. DELETED
3. DELETED
4. DELETED
5. .005 [0.13] MAX CUT FLASH.
6. .002 [0.05] MAX BURR. MUST BE AWAY FROM SMT BOARD SIDE.
7. DELETED
8. CUT TO POSITION BODIES TO BE MULTI-CUT OR ROTO-CUT ONLY. NEVER AIR CUT.
9. TUBE POSITIONS 5-36, BULK PACKAGE POSITIONS 2-4.
10. 3 LBS. MIN PUSHOUT FORCE.
11. -04 LEAD STYLE DOES NOT MATE WITH SSM-DH.
12. ORIENTATION OF PART IN TAPE AND REEL TO BE CONTROLLED BY POCKET DESIGN.
13. DUE TO THE HIGH AMOUNT OF INSERTION FORCE NEEDED, THE -LC OPTION IS NOT COMPATIBLE WITH AUTO PLACEMENT. SAMTEC RECOMMENDS MANUAL PLACEMENT FOR ALL ASSEMBLIES WITH THE -LC OPTION.
14. -SS OPTION ONLY AVAILABLE IN LEAD STYLE -01 AND CAN ONLY MATE WITH SSW, SSQ, SSM, ESW, ESQ AND BCS.
15. -FR OPTIONS WILL BE SHIPPED AT THE MAX QUANTITY PER REEL, BASED ON OPTIONS SELECTED.
16. NOT ALL PARTS FOLLOW EIA-481 ORIENTATION IN THE T&R POCKET.
17. -TR OPTION ORDERS INVOLVING PARTIAL REEL QUANTITIES MAY BE PACKAGED ACCORDING TO THE SAMTEC PACKAGING EFFICIENCY STANDARDS (SPES) FOUND ON WWW.SAMTEC.COM.

TABLE 1

ROW OPTION	LEAD STYLE	BOTTOM ROW PIN #1	TOP ROW PIN #2	'c'
-DH	-01	T-1S6-08-X-2	T-1S6-10-X-2	.230 [5.84]
-DH	-02	T-1S6-09-X-2	T-1S6-11-X-2	.320 [8.13]
-DH	-03	T-1S6-09-X-2	T-1S6-20-X-2	.420 [10.67]
-DH	-04 (SEE NOTE 11)	T-1S6-08-X-2	T-1S6-09-X-2	.120 [3.05]
-MT	-01	T-1S6-08-X-2	T-1S6-20-X-2	.230 [5.84]
-MT	-02	T-1S6-15-X-2	T-1S6-20-X-2	.320 [8.13]
-MT	-03	T-1S6-09-X-2	T-1S6-20-X-2	.420 [10.67]

MATERIAL:
INSULATOR:
LCP, UL 94 VO
COLOR: BLACK
TERMINALS:
PHOSPHOR BRONZE

ENISPROD ASSEMBLY 100
TSM/DH

samtec

520 PARK EAST BLVD. NEW ALBANY, INDIANA 47150
PHONE (812) 944-8733 P.O. BOX 1147
CODE 05322

MADE BY: BRATCHER 7-27-95

TSM-1XX-XX-XXX-XX-XX-XXX-XX
SHEET 1 OF 3