

TABLE 1		
PART NUMBER	"A" REF	"B"
RCE-01-X-02.00-XX	2000 [78.74]	2003 [78.86]
RCE-01-X-03.00-XX	3000 [118.11]	3003 [118.23]
RCE-01-X-05.00-XX	5000 [196.85]	5003 [196.97]

**DESIGNED & DIMENSIONED  
IN MILLIMETERS[INCHES]**

RCE-XX-X-XX.XX-XX

CABLE STYLE  
-01: OUTDOOR UL

END OPTION  
-D: DOUBLE ENDED  
(BOTH ENDS SEALED)  
-BC: BLUNT CUT  
(ONE END SEALED)

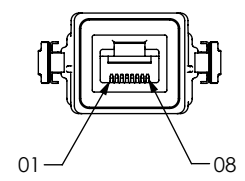
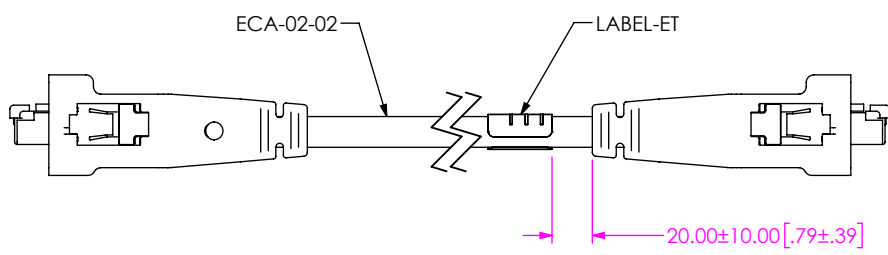
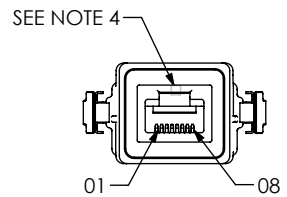
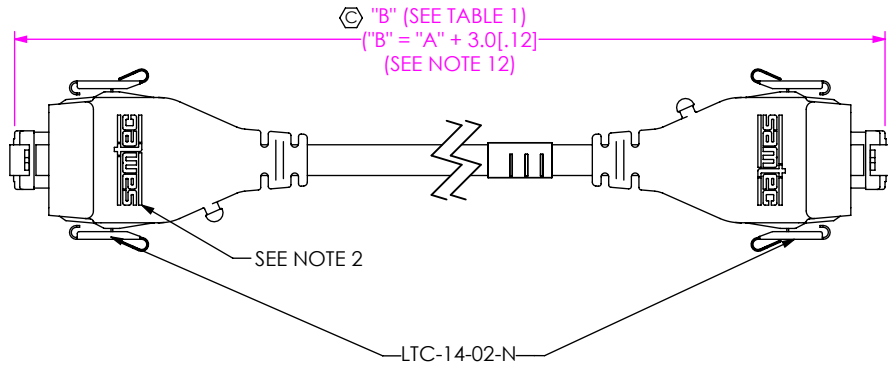
PLATING SPECIFICATION  
-G: .000050" GOLD ON  
CONTACT AREAS,  
NICKEL ON SHELLS

CABLE LENGTH\*  
-XX.XX: "A" (SEE TABLE 1)  
(0.25 M [9.842] MIN-50.00M [1968.504] MAX)

\* -02.00, -03.00 AND -05.00 ARE CATALOG  
STANDARD LENGTHS, FOR OTHER  
LENGTHS CONTACT SAMTEC

DO NOT  
SCALE FROM  
THIS PRINT

FIG 1  
(RCE-01-G-XX.XX-D SHOWN)



NOTES:

- ⊗ REPRESENTS A CRITICAL DIMENSION.
- SAMTEC LOGO TO APPEAR ON SURFACE AS SHOWN, APPROXIMATELY 17.6[.69] X 5.3[.21]
- DELETED
- ALL MULTIPLE CAVITY MOLDS SHALL IDENTIFY EACH CAVITY WITH A NUMBER DESIGNATION LOCATED WHERE SHOWN.
- ALL IDENTIFICATION MARKS SHALL NOT STAND GREATER THAN 0.05[.002] OFF THE SURFACE OF THE PART.
- ⊗ MOLD TO BE INSERTED TO ACCEPT DIFFERENT CABLE DIAMETERS.
- ASSEMBLY TO BE 100% ELECTRICALLY TESTED TO CAT5CH.
- ALL EJECTION PIN AND GATE LOCATIONS MUST BE APPROVED BY SAMTEC PRODUCT ENGINEERING.
- ⊗ ANY ADDITIONAL VOIDING AND/OR MODIFICATIONS TO VOIDING MUST BE APPROVED BY SAMTEC PRODUCT ENGINEERING.
- ALL DRAFT MUST BE WITHIN THE SPECIFIED TOLERANCES.
- ALL INSIDE/OUTSIDE RADII 0.13[.005] MAX UNLESS OTHERWISE STATED.
- TOLERANCE SHALL BE ± 2% FOR ALL LENGTHS.
- MINIMUM LATCH PUSH OUT FORCE: 2.2N[.50LB].
- ASSEMBLY TO BE BULK PACKAGED WITH ASBBL4X5.5 ON EACH END PER PACKAGING STANDARD CO-RF-WI-3001-M.
- POSITION DRAIN WIRE ON TOP SIDE AS SHOWN.
- NOTE DELETED.
- TAKE MEASUREMENT AT THE CORNER OF THE SHROUD.

UNLESS OTHERWISE SPECIFIED,  
DIMENSIONS ARE IN MILLIMETERS.  
TOLERANCES ARE:  
DECIMALS ANGLES  
X.X: ±0.3 [.01] 2°  
X.XX: ±0.13 [.005]  
X.XXX: ±0.051 [.0020]

PROPRIETARY NOTE  
THIS DOCUMENT CONTAINS INFORMATION  
CONFIDENTIAL AND PROPRIETARY TO  
SAMTEC, INC. AND SHALL NOT BE REPRODUCED  
OR TRANSFERRED TO OTHER DOCUMENTS OR  
DISCLOSED TO OTHERS OR USED FOR ANY  
PURPOSE OTHER THAN THAT WHICH IT WAS  
OBTAINED WITHOUT THE EXPRESSED WRITTEN  
CONSENT OF SAMTEC, INC.

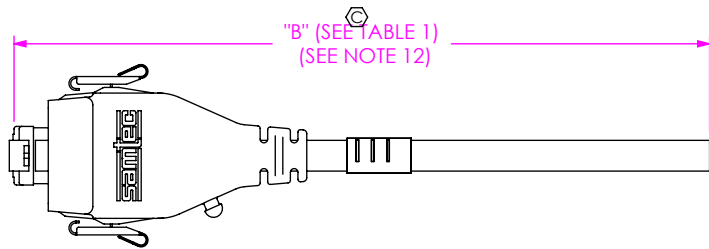


520 PARK EAST BLVD., NEW ALBANY, IN 47150  
PHONE: 812-944-6733 FAX: 812-948-5047  
e-Mail: info@SAMTEC.com code 55322

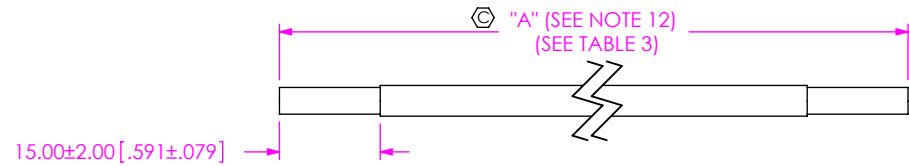
MATERIAL: DO NOT SCALE DRAWING SHEET SCALE: 1:1.5  
INSULATOR: POLYCARBONATE  
CONTACT: PHOS BRONZE  
SHIELD: PHOS BRONZE  
PREMOLD: MD-PTC-RF-640-BK  
OVERMOLD: MD-NYL-ZY-70G13-BK  
LATCH: BeCu

DESCRIPTION:  
SEAL RECTANGULAR CABLE PLUG, ETHERNET  
DWG. NO. RCE-XX-X-XX.XX-XX  
BY: T NEWTON 01/13/2009 SHEET 1 OF 4

**FIG 2**  
(RCE-01-G-XX.XX-BC SHOWN)  
(SAME AS FIG 1, DIFFERENT AS SHOWN)

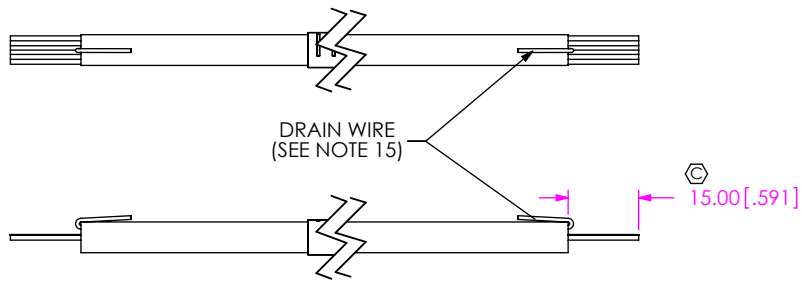


**IN-PROCESS 1**  
(CUT CABLE TO LENGTH AND STRIP OUTER JACKET)

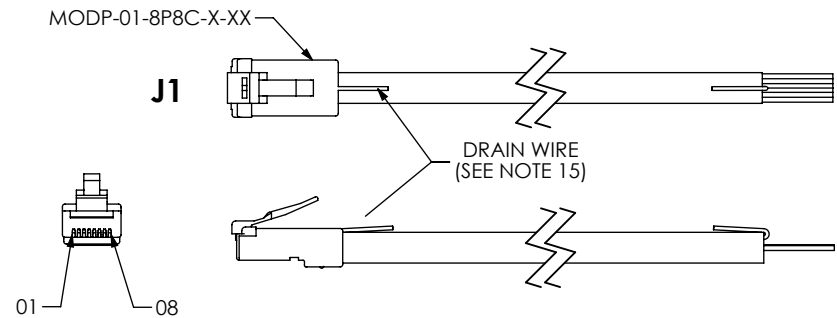


END OPTION	"A"
-D	LENGTH IN MILLIMETERS
-BC	LENGTH IN MILLIMETERS x 2 + 50.01[2.000]

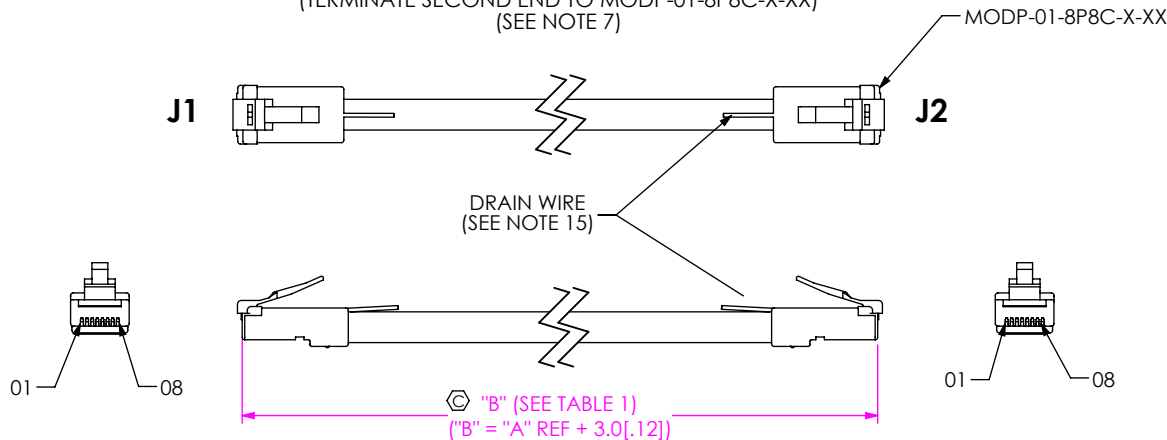
**IN-PROCESS 2**  
(FOLD DRAIN WIRE BACK OVER JACKET)



**IN-PROCESS 3**  
(TERMINATE FIRST END TO MODP-01-8P8C-X-XX)



**IN-PROCESS 4**  
(TERMINATE SECOND END TO MODP-01-8P8C-X-XX)  
(SEE NOTE 7)



J1 POS	COLOR	J2 POS
01	WHITE/ORANGE	01
02	ORANGE	02
03	WHITE/GREEN	03
04	BLUE	04
05	WHITE/BLUE	05
06	GREEN	06
07	WHITE/BROWN	07
08	BROWN	08
SHELL	BRAID	SHELL

**PROPRIETARY NOTE**  
THIS DOCUMENT CONTAINS INFORMATION  
CONFIDENTIAL AND PROPRIETARY TO  
SAMTEC, INC. AND SHALL NOT BE REPRODUCED  
OR TRANSFERRED TO OTHER DOCUMENTS OR  
DISCLOSED TO OTHERS OR USED FOR ANY  
PURPOSE OTHER THAN THAT WHICH IT WAS  
OBTAINED WITHOUT THE EXPRESSED WRITTEN  
CONSENT OF SAMTEC, INC.

DO NOT SCALE DRAWING

SHEET SCALE: 1:1.5

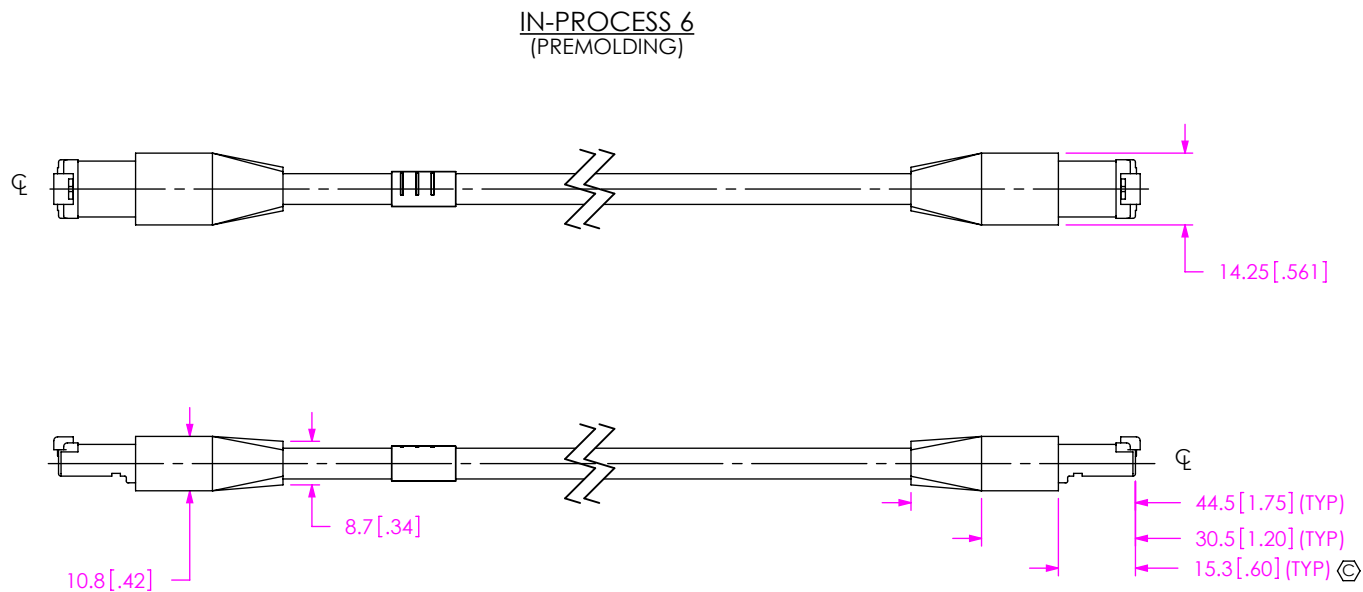
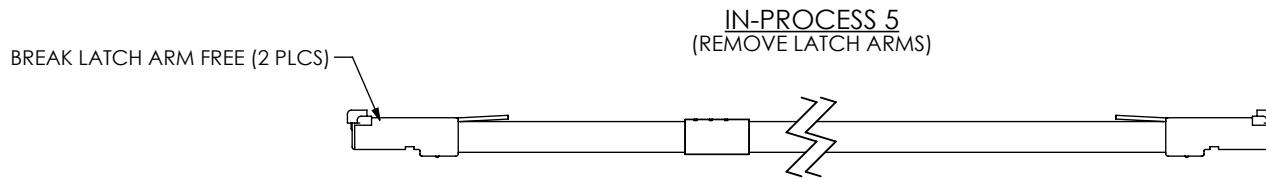


520 PARK EAST BLVD, NEW ALBANY, IN 47150  
PHONE: 812-944-6733 FAX: 812-948-5047  
e-Mail info@SAMTEC.com code 55322

DESCRIPTION:  
SEAL RECTANGULAR CABLE PLUG, ETHERNET  
DWG. NO.

RCE-XX-X-XX.XX-XX

BY: T NEWTON 01/13/2009 SHEET 2 OF 4



**PROPRIETARY NOTE**  
THIS DOCUMENT CONTAINS INFORMATION CONFIDENTIAL AND PROPRIETARY TO SAMTEC, INC. AND SHALL NOT BE REPRODUCED OR TRANSFERRED TO OTHER DOCUMENTS OR DISCLOSED TO OTHERS OR USED FOR ANY PURPOSE OTHER THAN THAT WHICH IT WAS OBTAINED WITHOUT THE EXPRESSED WRITTEN CONSENT OF SAMTEC, INC.

DO NOT SCALE DRAWING

SHEET SCALE: 1:1.5

**samtec**

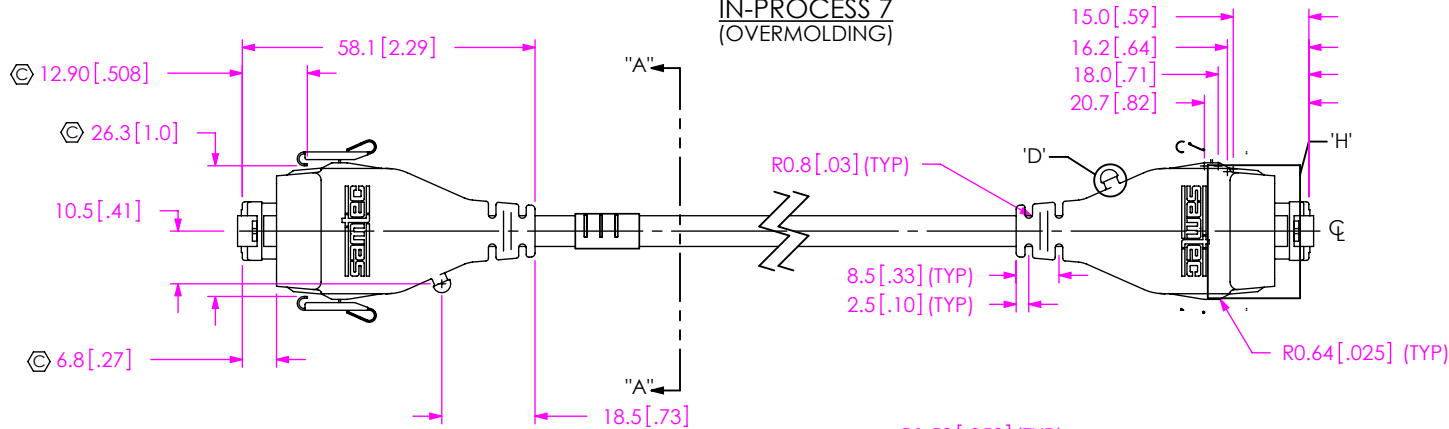
520 PARK EAST BLVD, NEW ALBANY, IN 47150  
PHONE: 812-944-6733 FAX: 812-948-5047  
e-Mail info@SAMTEC.com code 55322

DESCRIPTION:  
SEAL RECTANGULAR CABLE PLUG, ETHERNET

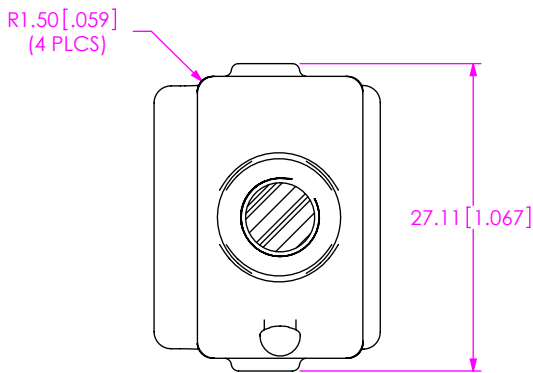
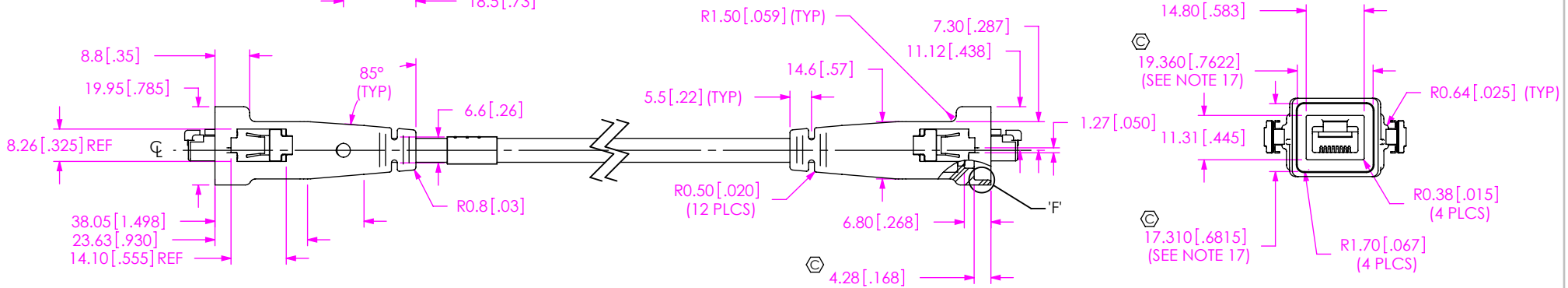
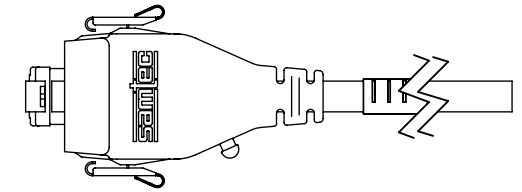
DWG. NO. **RCE-XX-X-XX.XX-XX**

BY: T NEWTON 01/13/2009 SHEET 3 OF 4

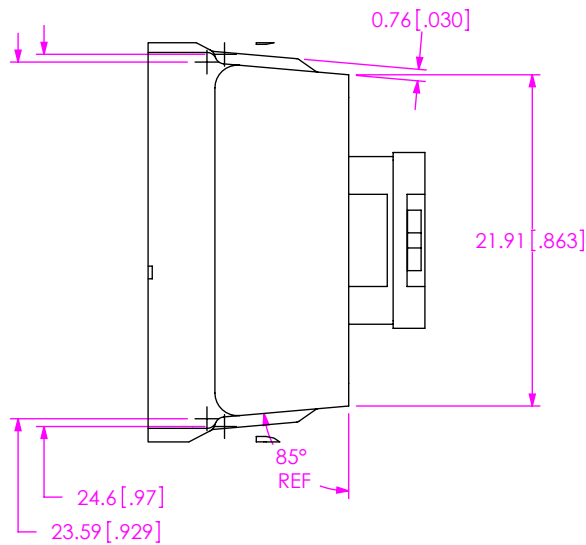
**IN-PROCESS 7  
(OVERMOLDING)**



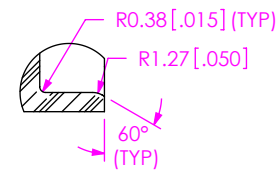
**IN-PROCESS 8  
(-BC: BLUNT CUT ONLY)  
(CUT CABLE IN HALF AND TRIM TO LENGTH)**



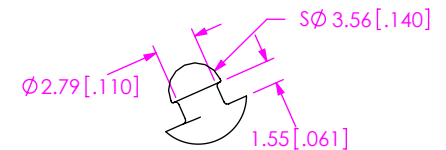
**SECTION "A"-  
"A"**  
SCALE 1.5 : 1



**DETAIL 'H'**  
SCALE 2 : 1



**DETAIL 'F'**  
SCALE 2 : 1



**DETAIL 'D'**  
SCALE 2 : 1

**PROPRIETARY NOTE**  
THIS DOCUMENT CONTAINS INFORMATION CONFIDENTIAL AND PROPRIETARY TO SAMTEC, INC. AND SHALL NOT BE REPRODUCED OR TRANSFERRED TO OTHER DOCUMENTS OR DISCLOSED TO OTHERS OR USED FOR ANY PURPOSE OTHER THAN THAT WHICH IT WAS OBTAINED WITHOUT THE EXPRESSED WRITTEN CONSENT OF SAMTEC, INC.

DO NOT SCALE DRAWING

SHEET SCALE: 1:1.5

**samtec**

520 PARK EAST BLVD, NEW ALBANY, IN 47150  
PHONE: 812-944-6733 FAX: 812-948-5047  
e-Mail: info@SAMTEC.com code 55322

DESCRIPTION:  
SEAL RECTANGULAR CABLE PLUG, ETHERNET

DWG. NO. **RCE-XX-X-XX.XX-XX**

BY: T NEWTON 01/13/2009 SHEET 4 OF 4